

Converting Colors

Decimal(13930127)

Have a look what the booklet for
Decimal(13930127) contains.

Decimal(13930127)	3
<i>Conversions</i>	4
<i>Details</i>	6
<i>Harmonies</i>	11
<i>Previews</i>	23
<i>Color Blindness Simulation</i>	26
<i>CSS Examples</i>	29

Color

Decimal(13930127)

Conversions

Conversions Part 1

Format	Color
Hex	D48E8F
RGB	212, 142, 143
RGB Percent	83%, 56%, 56%
CMY	0.1686, 0.4431, 0.4392
CMYK	0.00, 0.33, 0.33, 0.17
HSL	359°, 45%, 69%
HSV	359°, 33%, 83%
XYZ	41.7823, 35.3262, 30.6031
YIQ	163.0440, 41.3990, 15.1510

Conversions

Conversions Part 2

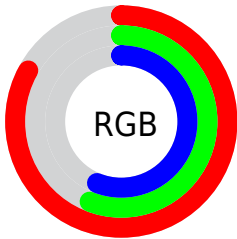
Format	Color
R _Y B	212, 142, 143
Decimal	13930127
CIE Lab	66.00, 26.72, 10.37
CIE LCh	66, 28.666, 21.217
Yxy	35.3262, 0.3879, 0.3280
Android (android.graphics.Color)	4292120207 (0xFFD48E8F)
YUV	163.0440, -9.8817, 42.9344
Hunter-Lab	59.4359, 21.4694, 11.0771

Details

The Decimal color **13930127** is a light color, and the websafe version is hex **CC9999**. A complement of this color would be **9360595**, and the grayscale version is **10724259**.

A 20% lighter version of the original color is **16762053**, and **10247005** is the 20% darker color. If you saturate the color by 10%, you get **13924730**, and if you desaturate by 10%, it is **13935524**.

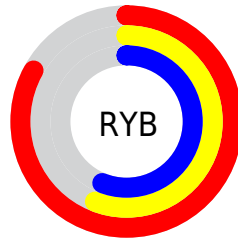
Distribution



Red (83%)

Green (56%)

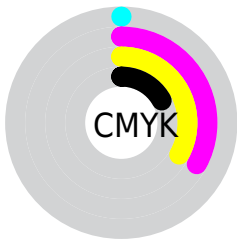
Blue (56%)



Red (83%)

Yellow (56%)

Blue (56%)

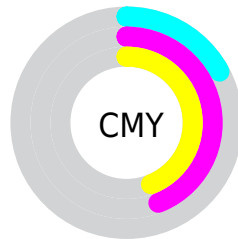


Cyan (0%)

Magenta (33%)

Yellow (33%)

Black (17%)



Cyan (17%)

Magenta (44%)

Yellow (44%)

Brightness & Saturation Gradients

These gradients show how the Decimal color 13930127 changes by changing the brightness by 10 percent. The first figure shows a shift by +10% for each color and the second figure -10%.

Similar to the brightness gradients but the following saturation gradients show a change of the Decimal color 13930127 by changing the saturation by 10% instead.

 13930127

 13930127

16777215

 12022901

 16762053

 10247005

 16769249

 8405829

 16776701

 6695727

 4985882

 3407872

 1376256

 0

 13930127

 13930127

■ 13924730

■ 13935524

■ 13919333

■ 13940921

■ 13913680

■ 13946574

■ 13908283

■ 13951971

■ 13902887

■ 13957367

■ 13897490

■ 13959167

■ 13893635

Harmonies

Analogous

The Analogous color harmony consists of three colors that are next to each other on the color wheel.



13536937



13930127



13407353

Triad

The Triadic color harmony groups three colors that are evenly spaced from another and form a triangle on the color wheel.



13930127



8563583



7644627

Complementary

The Complementary color scheme is a pair of colors which are on the opposite of each other on the color wheel.



13930127



9360595

Split Complementary

Split-complementary colors differ from the complementary color scheme. The scheme consists of three colors, the original color and two neighbors of the complement color.



5549000



13930127



6663832

Square

The Square scheme is like the rectangle color scheme, but the four colors are evenly spaced on the color wheel.



13930127



10527856



5287602



10132688

Rectangle

The Rectangle color scheme consists of four colors that form a rectangle on the color wheel.



13930127



12687728



5287602



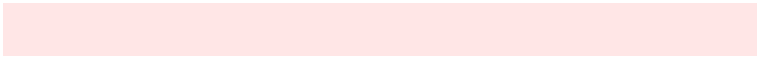
6858960

Sweetspot

The Sweet Spot groups the original color and five complimentary colors.



13930127



16770790



13864660



8417392



0



8421504

Same Dimension

The Same Dimension uses a secret algorithm to generate beautiful new colors.



13930127



16751002



13938830



7037025



11206658



2818049

Inverse Universe

The Inverse Universe completely reimagines the original color for something new.



13930127



16751002



9351892



7037025



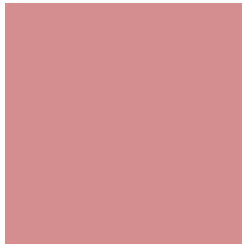
11206658



2818049

Previews

White Background



This preview shows how the Decimal color 13930127 looks on a white background.

Color Contrast Check

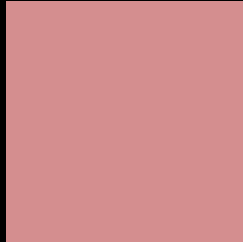
Large Text (above 18pt) WCAG AA × Fail

Any Text WCAG AA × Fail

Large Text (above 18pt) WCAG AAA × Fail

Any Text WCAG AAA × Fail

Black Background



This preview shows how the Decimal color 13930127 looks on a black background.

Color Contrast Check

Large Text (above 18pt) WCAG AA ✓ Pass

Any Text WCAG AA ✓ Pass

Large Text (above 18pt) WCAG AAA ✓ Pass

Any Text WCAG AAA ✓ Pass

If you want to check with other color combinations, try the [Color Contrast Checker](#).

Decimal 13930127 Background



This preview shows how black text looks on a background with the Decimal color 13930127.



This preview shows how white text looks on a background with the Decimal color 13930127.

Color Blindness Simulation

Color vision deficiency is a very complex topic, and I could not describe the different causes any better than Wikipedia does, so if you want to learn more, you should check out their [article about color blindness](#).

Dichromacy



Original Color
13930127

Protanopia
10920089

Deuteranopia
12098445



Tritanopia
13995415

Trichromacy



Original Color
13930127

Protanomaly
12032405

Deuteranomaly
12752526

Tritanomaly
13995412

Monochromacy



Original Color
13930127

Achromatopsia
10724259

Achromatomaly
11901852

CSS Examples

Text

The CSS property to change the color of the text to Decimal 13930127 is called "color". The color property can be set on classes, ids or directly on the HTML element.

This example shows how text in the color #D48E8F looks like.

```
.text, #text, p{  
    color:#D48E8F  
}
```

If you want to add a text shadow in that color use the text-shadow property, you can generate a text shadow directly with our [CSS Text Shadow Generator](#).

Here you see how black text with a 4 pixel #D48E8F colored shadow looks like.

```
.shadow{ text-shadow: 4px 4px 2px #D48E8F
}
```

Border

The CSS property to change the border of an element to Decimal 13930127 is called "border". The border property can be set on classes, ids or directly on the HTML element.

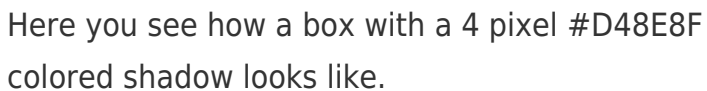
This example shows the color as border, it can be applied via the CSS property "border" or "border-color".

```
.border, #border, table{ border:4px solid
#D48E8F }
```

If only the border color should be changed use the property `border-color`.

```
.border{ border-color:#D48E8F }
```

If you want to add a box shadow in that color use:



Here you see how a box with a 4 pixel #D48E8F colored shadow looks like.

```
.boxshadow{ -moz-box-shadow:4px 4px 4px  
4px #D48E8F; -webkit-box-shadow:4px 4px  
4px 4px #D48E8F; box-shadow:4px 4px 4px  
4px #D48E8F }
```

Background

The CSS property to change the background color of an element to Decimal 13930127 is called "background". The background property can be set on classes, ids or directly on the HTML element.

```
.background, #background, body{  
background:#D48E8F }
```

If only the background color should be changed can be used:

```
.background{ background-color:#D48E8F }
```

This example shows the color as background, it is applied via the CSS property "background".

To optimize and compress your CSS code, you can use our [online CSS compressor and optimizer](#) based on csstidy. If you want to create a linear or radial gradient as background or border, check our [CSS Gradient Generator](#).

Hey! You found this booklet interesting? Support Converting Colors with the new Membership Option!

The pro membership hides all ads, plus gives you double the colors in the color bucket, and more awesome pro features!

[Learn more, Memberships starting at \\$2.50/m!](#)

**Follow me
on Twitter!**

@ConvertingColor