

# Converting Colors

Decimal(13931148)

Have a look what the booklet for  
Decimal(13931148) contains.

<b>Decimal(13931148)</b> .....	3
<i><b>Conversions</b></i> .....	4
<i><b>Details</b></i> .....	6
<i><b>Harmonies</b></i> .....	11
<i><b>Previews</b></i> .....	23
<i><b>Color Blindness Simulation</b></i> .....	26
<i><b>CSS Examples</b></i> .....	29

# **Color**

**Decimal(13931148)**

# Conversions

## Conversions Part 1

Format	Color
Hex	D4928C
RGB	212, 146, 140
RGB Percent	83%, 57%, 55%
CMY	0.1686, 0.4275, 0.4510
CMYK	0.00, 0.31, 0.34, 0.17
HSL	5°, 46%, 69%
HSV	5°, 34%, 83%
XYZ	42.1639, 36.4483, 29.6239
YIQ	165.0500, 41.2620, 12.1260

# Conversions

## Conversions Part 2

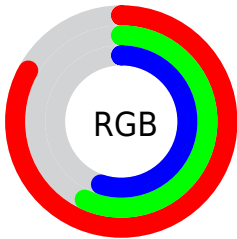
Format	Color
R <sub>Y</sub> B	212, 147, 140
Decimal	13931148
CIE Lab	66.86, 24.17, 13.27
CIE LCh	67, 27.575, 28.761
Yxy	36.4483, 0.3896, 0.3367
Android (android.graphics.Color)	4292121228 (0xFFD4928C)
YUV	165.0500, -12.3497, 41.1751
Hunter-Lab	60.3724, 19.0121, 13.1679

# Details

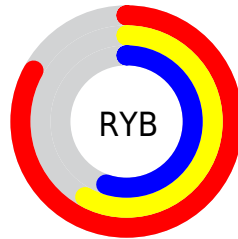
The Decimal color **13931148** is a light color, and the websafe version is hex **CC9999**. A complement of this color would be **9227988**, and the grayscale version is **10855845**.

A 20% lighter version of the original color is **16763074**, and **10248026** is the 20% darker color. If you saturate the color by 10%, you get **13926263**, and if you desaturate by 10%, it is **13936033**.

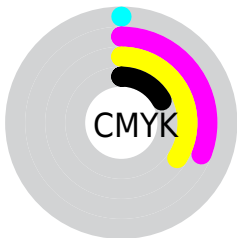
# Distribution



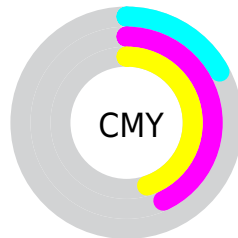
- Red (83%)
- Green (57%)
- Blue (55%)



- Red (83%)
- Yellow (58%)
- Blue (55%)



- Cyan (0%)
- Magenta (31%)
- Yellow (34%)
- Black (17%)



- Cyan (17%)
- Magenta (43%)
- Yellow (45%)

# Brightness & Saturation Gradients

These gradients show how the Decimal color 13931148 changes by changing the brightness by 10 percent. The first figure shows a shift by +10% for each color and the second figure -10%.

Similar to the brightness gradients but the following saturation gradients show a change of the Decimal color 13931148 by changing the saturation by 10% instead.



 13931148

 13931148

16777215

 12023923

 16763074

 10248026

 16770525

 8406851

 16777210

 6696748

 4987160

 3408384

 1507328

 0

 13931148

 13931148

 13926263

 13936033

 13921122

 13941174

 13916236

 13946060

 13911095

 13951201

 13906210

 13956086

 13901069

 13959167

 13898240

# Harmonies

## Analogous

The Analogous color harmony consists of three colors that are next to each other on the color wheel.



13799589



13931148



13277305

# Triad

The Triadic color harmony groups three colors that are evenly spaced from another and form a triangle on the color wheel.



13931148



8302216



8496596

# Complementary

The Complementary color scheme is a pair of colors which are on the opposite of each other on the color wheel.



13931148



9227988

# Split Complementary

Split-complementary colors differ from the complementary color scheme. The scheme consists of three colors, the original color and two neighbors of the complement color.



6401228



13931148



6598817

# Square

The Square scheme is like the rectangle color scheme, but the four colors are evenly spaced on the color wheel.



13931148



10201207



5615802



10853838

# Rectangle

The Rectangle color scheme consists of four colors that form a rectangle on the color wheel.



13931148



12426866



5615802



7776467

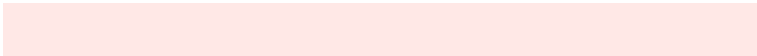


# Sweetspot

The Sweet Spot groups the original color and five complimentary colors.



13931148



16771302



13929678



8417648



0



8421504



# Same Dimension

The Same Dimension uses a secret algorithm to generate beautiful new colors.



13931148



16752534



13940108



7037280



11210240



2819072



# Inverse Universe

The Inverse Universe completely reimagines the original color for something new.



9227988



9893631



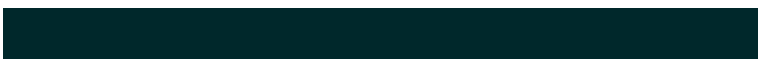
9219028



6318699



40363

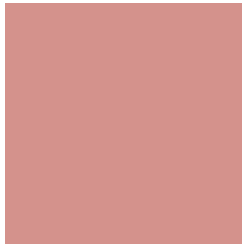


10283



# Previews

## White Background



This preview shows how the Decimal color 13931148 looks on a white background.

## Color Contrast Check

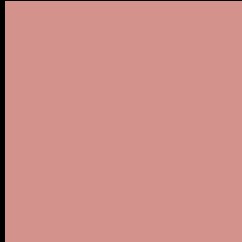
Large Text (above 18pt) WCAG AA × Fail

Any Text WCAG AA × Fail

Large Text (above 18pt) WCAG AAA × Fail

Any Text WCAG AAA × Fail

# Black Background



This preview shows how the Decimal color 13931148 looks on a black background.

## Color Contrast Check

Large Text (above 18pt) WCAG AA ✓ Pass

Any Text WCAG AA ✓ Pass

Large Text (above 18pt) WCAG AAA ✓ Pass

Any Text WCAG AAA ✓ Pass

If you want to check with other color combinations, try the [Color Contrast Checker](#).



## Decimal 13931148 Background



This preview shows how black text looks on a background with the Decimal color 13931148.



This preview shows how white text looks on a background with the Decimal color 13931148.

# Color Blindness Simulation

Color vision deficiency is a very complex topic, and I could not describe the different causes any better than Wikipedia does, so if you want to learn more, you should check out their [article about color blindness](#).


## Dichromacy



**Original Color**  
13931148

**Protanopia**  
11117204

**Deuteranopia**  
12361098



**Tritanopia**  
13996187

# Trichromacy



**Original Color**  
13931148

**Protanomaly**  
12164241

**Deuteranomaly**  
12949899

**Tritanomaly**  
13996438

# Monochromacy



**Original Color**  
13931148

**Achromatopsia**  
10855845

**Achromatomaly**  
11968156

# CSS Examples

## Text

The CSS property to change the color of the text to Decimal 13931148 is called "color". The color property can be set on classes, ids or directly on the HTML element.

This example shows how text in the color #D4928C looks like.

```
.text, #text, p{  
  color:#D4928C  
}
```

If you want to add a text shadow in that color use the text-shadow property, you can generate a text shadow directly with our [CSS Text Shadow Generator](#).

Here you see how black text with a 4 pixel #D4928C colored shadow looks like.

```
.shadow{ text-shadow: 4px 4px 2px #D4928C
}
```

## Border

The CSS property to change the border of an element to Decimal 13931148 is called "border". The border property can be set on classes, ids or directly on the HTML element.

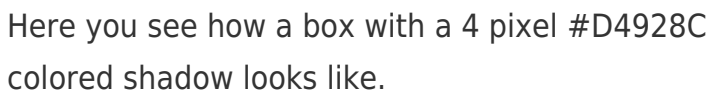
This example shows the color as border, it can be applied via the CSS property "border" or "border-color".

```
.border, #border, table{ border:4px solid
#D4928C }
```

If only the border color should be changed use the property `border-color`.

```
.border{ border-color:#D4928C }
```

If you want to add a box shadow in that color use:



Here you see how a box with a 4 pixel #D4928C colored shadow looks like.

```
.boxshadow{ -moz-box-shadow:4px 4px 4px  
4px #D4928C; -webkit-box-shadow:4px 4px  
4px 4px #D4928C; box-shadow:4px 4px 4px  
4px #D4928C }
```

# Background

The CSS property to change the background color of an element to Decimal 13931148 is called "background". The background property can be set on classes, ids or directly on the HTML element.

```
.background, #background, body{  
background:#D4928C }
```

If only the background color should be changed can be used:

```
.background{ background-color:#D4928C }
```

This example shows the color as background, it is applied via the CSS property "background".

To optimize and compress your CSS code, you can use our [online CSS compressor and optimizer](#) based on csstidy. If you want to create a linear or radial gradient as background or border, check our [CSS Gradient Generator](#).



Hey! You found this booklet interesting? Support Converting Colors with the new Membership Option!

The pro membership hides all ads, plus gives you double the colors in the color bucket, and more awesome pro features!

**[Learn more, Memberships starting at \\$2.50/m!](#)**

**Follow me  
on Twitter!**

@ConvertingColor