

# Converting Colors

Decimal(13931164)

Have a look what the booklet for  
Decimal(13931164) contains.

<b>Decimal(13931164)</b> .....	3
<i><b>Conversions</b></i> .....	4
<i><b>Details</b></i> .....	6
<i><b>Harmonies</b></i> .....	11
<i><b>Previews</b></i> .....	23
<i><b>Color Blindness Simulation</b></i> .....	26
<i><b>CSS Examples</b></i> .....	29

# **Color**

**Decimal(13931164)**

# Conversions

## Conversions Part 1

Format	Color
Hex	D4929C
RGB	212, 146, 156
RGB Percent	83%, 57%, 61%
CMY	0.1686, 0.4275, 0.3882
CMYK	0.00, 0.31, 0.26, 0.17
HSL	351°, 43%, 70%
HSV	351°, 31%, 83%
XYZ	43.4310, 36.9551, 36.2965
YIQ	166.8740, 36.1260, 17.1020

# Conversions

## Conversions Part 2

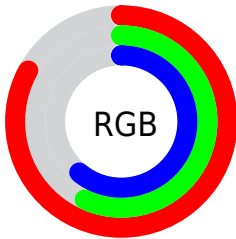
<b>Format</b>	<b>Color</b>
<a href="#">RYB</a>	<a href="#">212, 146, 156</a>
Decimal	<a href="#">13931164</a>
CIELab	<a href="#">67.24, 26.31, 4.85</a>
CIElCh	<a href="#">67, 26.751, 10.441</a>
Yxy	<a href="#">36.9551, 0.3722, 0.3167</a>
Android (android.graphics.Color)	<a href="#">4292121244 (0xFFD4929C)</a>
YUV	<a href="#">166.8740, -5.3609, 39.5755</a>
Hunter-Lab	<a href="#">60.7907, 21.1429, 7.1531</a>

# Details

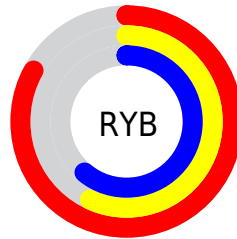
The Decimal color **13931164** is a light color, and the websafe version is hex **CC9999**. A complement of this color would be **9622730**, and the grayscale version is **10987431**.

A 20% lighter version of the original color is **16763090**, and **10248041** is the 20% darker color. If you saturate the color by 10%, you get **13925770**, and if you desaturate by 10%, it is **13936558**.

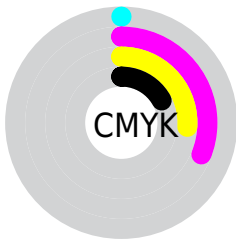
# Distribution



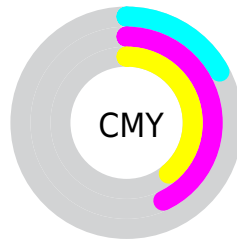
- Red (83%)
- Green (57%)
- Blue (61%)



- Red (83%)
- Yellow (57%)
- Blue (61%)



- Cyan (0%)
- Magenta (31%)
- Yellow (26%)
- Black (17%)



- Cyan (17%)
- Magenta (43%)
- Yellow (39%)

# Brightness & Saturation Gradients

These gradients show how the Decimal color 13931164 changes by changing the brightness by 10 percent. The first figure shows a shift by +10% for each color and the second figure -10%.

Similar to the brightness gradients but the following saturation gradients show a change of the Decimal color 13931164 by changing the saturation by 10% instead.



 13931164

 13931164

16777215

 12089474

 16763090

 10248041

 16770543

 8472145

 6762298

 5052452

 3408143

 1835009

 0

 13931164

 13931164

 13925770

 13936558

 13920376

 13941952

 13914726

 13947602

 13909332

 13952996

 13903938

 13958390

 13898544

 13959167

 13893664

# Harmonies

## Analogous

The Analogous color harmony consists of three colors that are next to each other on the color wheel.



13210804



13931164



13735558

# Triad

The Triadic color harmony groups three colors that are evenly spaced from another and form a triangle on the color wheel.



13931164



9612414



7384016

# Complementary

The Complementary color scheme is a pair of colors which are on the opposite of each other on the color wheel.



13931164



9622730

# Split Complementary

Split-complementary colors differ from the complementary color scheme. The scheme consists of three colors, the original color and two neighbors of the complement color.



6008770



13931164



7778451

# Square

The Square scheme is like the rectangle color scheme, but the four colors are evenly spaced on the color wheel.



13931164



11380084



6336940



9544659

# Rectangle

The Rectangle color scheme consists of four colors that form a rectangle on the color wheel.



13931164



13212283



6336940



6794701



# Sweetspot

The Sweet Spot groups the original color and five complimentary colors.



13931164



16771308



13210324



8417652



0



8421504



# Same Dimension

The Same Dimension uses a secret algorithm to generate beautiful new colors.



13931164



16753071



13936786



7037026



11206682



2818055



# Inverse Universe

The Inverse Universe completely reimagines the original color for something new.



13931164



16753071



9617108



7037026



11206682

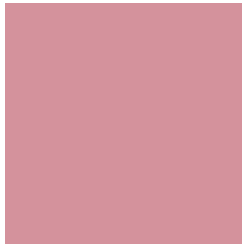


2818055



# Previews

## White Background



This preview shows how the Decimal color 13931164 looks on a white background.

## Color Contrast Check

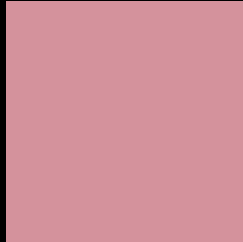
Large Text (above 18pt) WCAG AA × Fail

Any Text WCAG AA × Fail

Large Text (above 18pt) WCAG AAA × Fail

Any Text WCAG AAA × Fail

# Black Background



This preview shows how the Decimal color 13931164 looks on a black background.

## Color Contrast Check

Large Text (above 18pt) WCAG AA ✓ Pass

Any Text WCAG AA ✓ Pass

Large Text (above 18pt) WCAG AAA ✓ Pass

Any Text WCAG AAA ✓ Pass

If you want to check with other color combinations, try the [Color Contrast Checker](#).



## Decimal 13931164 Background



This preview shows how black text looks on a background with the Decimal color 13931164.



This preview shows how white text looks on a background with the Decimal color 13931164.

# Color Blindness Simulation

Color vision deficiency is a very complex topic, and I could not describe the different causes any better than Wikipedia does, so if you want to learn more, you should check out their [article about color blindness](#).

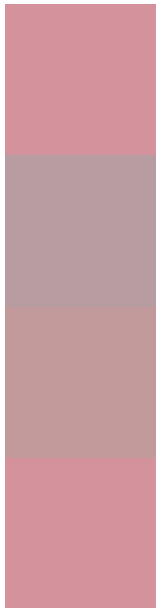
## Dichromacy





**Tritanopia**  
13931165

# Trichromacy



**Original Color**  
13931164

**Protanomaly**  
12033442

**Deuteranomaly**  
12753563

**Tritanomaly**  
13931165

# Monochromacy



**Original Color**  
13931164

**Achromatopsia**  
10987431

**Achromatomaly**  
12033955

# CSS Examples

## Text

The CSS property to change the color of the text to Decimal 13931164 is called "color". The color property can be set on classes, ids or directly on the HTML element.

This example shows how text in the color #D4929C looks like.

```
.text, #text, p{  
    color:#D4929C  
}
```

If you want to add a text shadow in that color use the text-shadow property, you can generate a text shadow directly with our [CSS Text Shadow Generator](#).

Here you see how black text with a 4 pixel #D4929C colored shadow looks like.

```
.shadow{ text-shadow: 4px 4px 2px #D4929C
}
```

## Border

The CSS property to change the border of an element to Decimal 13931164 is called "border". The border property can be set on classes, ids or directly on the HTML element.

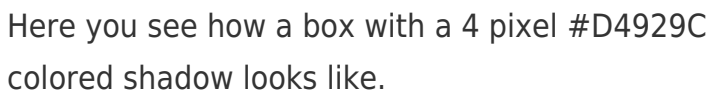
This example shows the color as border, it can be applied via the CSS property "border" or "border-color".

```
.border, #border, table{ border:4px solid
#D4929C }
```

If only the border color should be changed use the property `border-color`.

```
.border{ border-color:#D4929C }
```

If you want to add a box shadow in that color use:

A rectangular box with a 4px red shadow. The box is white with a thin red border. The shadow is a darker red color, extending 4 pixels to the right and 4 pixels down from the bottom-right corner of the box.

Here you see how a box with a 4 pixel #D4929C colored shadow looks like.

```
.boxshadow{ -moz-box-shadow:4px 4px 4px  
4px #D4929C; -webkit-box-shadow:4px 4px  
4px 4px #D4929C; box-shadow:4px 4px 4px  
4px #D4929C }
```

# Background

The CSS property to change the background color of an element to Decimal 13931164 is called "background". The background property can be set on classes, ids or directly on the HTML element.

```
.background, #background, body{  
background:#D4929C }
```

If only the background color should be changed can be used:

```
.background{ background-color:#D4929C }
```

This example shows the color as background, it is applied via the CSS property "background".

To optimize and compress your CSS code, you can use our [online CSS compressor and optimizer](#) based on csstidy. If you want to create a linear or radial gradient as background or border, check our [CSS Gradient Generator](#).



Hey! You found this booklet interesting? Support Converting Colors with the new Membership Option!

The pro membership hides all ads, plus gives you double the colors in the color bucket, and more awesome pro features!

**[Learn more, Memberships starting at \\$2.50/m!](#)**

**Follow me  
on Twitter!**

@ConvertingColor