

# Converting Colors

Decimal(13931957)

Have a look what the booklet for  
Decimal(13931957) contains.

<b>Decimal(13931957)</b> .....	3
<i><b>Conversions</b></i> .....	4
<i><b>Details</b></i> .....	6
<i><b>Harmonies</b></i> .....	11
<i><b>Previews</b></i> .....	23
<i><b>Color Blindness Simulation</b></i> .....	26
<i><b>CSS Examples</b></i> .....	29

# **Color**

**Decimal(13931957)**

# Conversions

## Conversions Part 1

Format	Color
Hex	D495B5
RGB	212, 149, 181
RGB Percent	83%, 58%, 71%
CMY	0.1686, 0.4157, 0.2902
CMYK	0.00, 0.30, 0.15, 0.17
HSL	330°, 42%, 71%
HSV	330°, 30%, 83%
XYZ	46.2393, 38.8281, 48.7736
YIQ	171.4850, 27.2760, 23.3080

# Conversions

## Conversions Part 2

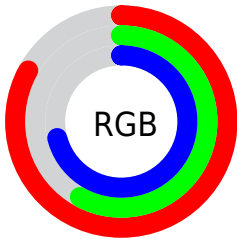
Format	Color
R <sub>Y</sub> B	212, 149, 181
Decimal	13931957
CIE Lab	68.63, 28.47, -7.12
CIE LCh	69, 29.350, 345.960
Yxy	38.8281, 0.3455, 0.2901
Android (android.graphics.Color)	4292122037 (0xFFD495B5)
YUV	171.4850, 4.6909, 35.5317
Hunter-Lab	62.3122, 23.4110, -2.7894

# Details

The Decimal color **13931957** is a light color, and the websafe version is hex **CC99CC**. A complement of this color would be **9819316**, and the grayscale version is **11250603**.

A 20% lighter version of the original color is **16764141**, and **10248576** is the 20% darker color. If you saturate the color by 10%, you get **13926571**, and if you desaturate by 10%, it is **13937343**.

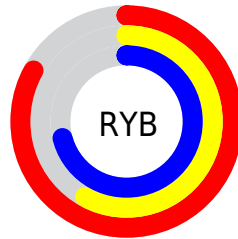
# Distribution



Red (83%)

Green (58%)

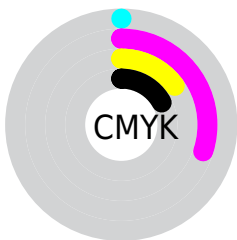
Blue (71%)



Red (83%)

Yellow (58%)

Blue (71%)

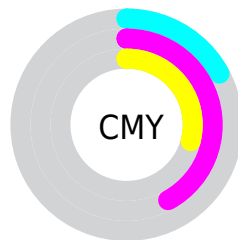


Cyan (0%)

Magenta (30%)

Yellow (15%)

Black (17%)



Cyan (17%)

Magenta (42%)

Yellow (29%)

# Brightness & Saturation Gradients

These gradients show how the Decimal color 13931957 changes by changing the brightness by 10 percent. The first figure shows a shift by +10% for each color and the second figure -10%.

Similar to the brightness gradients but the following saturation gradients show a change of the Decimal color 13931957 by changing the saturation by 10% instead.



 13931957

 13931957

16777215

 12090266

 16764141

 10248576

 16771327

 8538471

 6828367

 5184056

 3539491

 2228236

 0

 13931957

 13931957

 13926571

 13937343

 13921184

 13942730

 13915542

 13948372

 13910155

 13953759

 13904769

 13959145

 13899382

 13959156

 13893996

 13959166

 13893740

 13959167

# Harmonies

## Analogous

The Analogous color harmony consists of three colors that are next to each other on the color wheel.



12426444



13931957



14521498

# Triad

The Triadic color harmony groups three colors that are evenly spaced from another and form a triangle on the color wheel.



13931957



11315828



5682381

# Complementary

The Complementary color scheme is a pair of colors which are on the opposite of each other on the color wheel.



13931957



9819316

# Split Complementary

Split-complementary colors differ from the complementary color scheme. The scheme consists of three colors, the original color and two neighbors of the complement color.



5748405



13931957



9351554

# Square

The Square scheme is like the rectangle color scheme, but the four colors are evenly spaced on the color wheel.



13931957



12951924



7320986



7581402

# Rectangle

The Rectangle color scheme consists of four colors that form a rectangle on the color wheel.



13931957



14325641



7320986



5486022



# Sweetspot

The Sweet Spot groups the original color and five complimentary colors.



13931957



16771316



11769300



8417657



0



8421504



# Same Dimension

The Same Dimension uses a secret algorithm to generate beautiful new colors.



13931957



16753618



13931926



7037030



11206743



2818070



# Inverse Universe

The Inverse Universe completely reimagines the original color for something new.



13931957



16753618



9819347



7037030



11206743

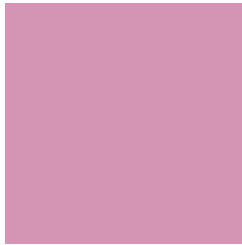


2818070



# Previews

## White Background



This preview shows how the Decimal color 13931957 looks on a white background.

## Color Contrast Check

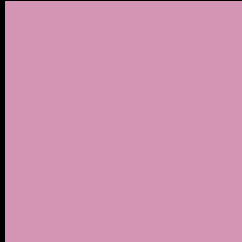
Large Text (above 18pt) WCAG AA × Fail

Any Text WCAG AA × Fail

Large Text (above 18pt) WCAG AAA × Fail

Any Text WCAG AAA × Fail

# Black Background



This preview shows how the Decimal color 13931957 looks on a black background.

## Color Contrast Check

Large Text (above 18pt) WCAG AA ✓ Pass

Any Text WCAG AA ✓ Pass

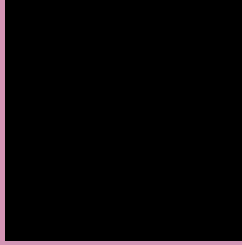
Large Text (above 18pt) WCAG AAA ✓ Pass

Any Text WCAG AAA ✓ Pass

If you want to check with other color combinations, try the [Color Contrast Checker](#).



## Decimal 13931957 Background



This preview shows how black text looks on a background with the Decimal color 13931957.



This preview shows how white text looks on a background with the Decimal color 13931957.

# Color Blindness Simulation

Color vision deficiency is a very complex topic, and I could not describe the different causes any better than Wikipedia does, so if you want to learn more, you should check out their [article about color blindness](#).

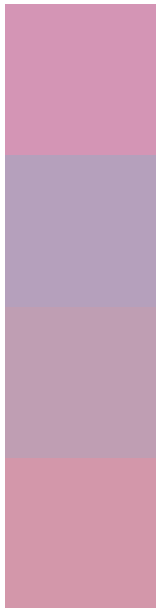
## Dichromacy





**Tritanopia**  
13801636

# Trichromacy



**Original Color**  
13931957

**Protanomaly**  
11903164

**Deuteranomaly**  
12558003

**Tritanomaly**  
13866922

# Monochromacy



**Original Color**  
13931957

**Achromatopsia**  
11250603

**Achromatomaly**  
12231599

# CSS Examples

## Text

The CSS property to change the color of the text to Decimal 13931957 is called "color". The color property can be set on classes, ids or directly on the HTML element.

This example shows how text in the color #D495B5 looks like.

```
.text, #text, p{  
    color:#D495B5  
}
```

If you want to add a text shadow in that color use the text-shadow property, you can generate a text shadow directly with our [CSS Text Shadow Generator](#).

Here you see how black text with a 4 pixel #D495B5 colored shadow looks like.

```
.shadow{ text-shadow: 4px 4px 2px #D495B5
}
```

## Border

The CSS property to change the border of an element to Decimal 13931957 is called "border". The border property can be set on classes, ids or directly on the HTML element.

This example shows the color as border, it can be applied via the CSS property "border" or "border-color".

```
.border, #border, table{ border:4px solid
#D495B5 }
```

If only the border color should be changed use the property `border-color`.

```
.border{ border-color:#D495B5 }
```

If you want to add a box shadow in that color use:

Here you see how a box with a 4 pixel #D495B5 colored shadow looks like.

```
.boxshadow{ -moz-box-shadow:4px 4px 4px  
4px #D495B5; -webkit-box-shadow:4px 4px  
4px 4px #D495B5; box-shadow:4px 4px 4px  
4px #D495B5 }
```

# Background

The CSS property to change the background color of an element to Decimal 13931957 is called "background". The background property can be set on classes, ids or directly on the HTML element.

```
.background, #background, body{  
background:#D495B5 }
```

If only the background color should be changed can be used:

```
.background{ background-color:#D495B5 }
```

This example shows the color as background, it is applied via the CSS property "background".

To optimize and compress your CSS code, you can use our [online CSS compressor and optimizer](#) based on csstidy. If you want to create a linear or radial gradient as background or border, check our [CSS Gradient Generator](#).



Hey! You found this booklet interesting? Support Converting Colors with the new Membership Option!

The pro membership hides all ads, plus gives you double the colors in the color bucket, and more awesome pro features!

**[Learn more, Memberships starting at \\$2.50/m!](#)**

**Follow me  
on Twitter!**

@ConvertingColor