

Converting Colors

Decimal(13933937)

Have a look what the booklet for
Decimal(13933937) contains.

Decimal(13933937)	3
<i>Conversions</i>	4
<i>Details</i>	6
<i>Harmonies</i>	11
<i>Previews</i>	23
<i>Color Blindness Simulation</i>	26
<i>CSS Examples</i>	29

Color

Decimal(13933937)

Conversions

Conversions Part 1

Format	Color
Hex	D49D71
RGB	212, 157, 113
RGB Percent	83%, 62%, 44%
CMY	0.1686, 0.3843, 0.5569
CMYK	0.00, 0.26, 0.47, 0.17
HSL	27°, 54%, 64%
HSV	27°, 47%, 83%
XYZ	42.1890, 39.3032, 20.9855
YIQ	168.4290, 46.9040, -2.0240

Conversions

Conversions Part 2

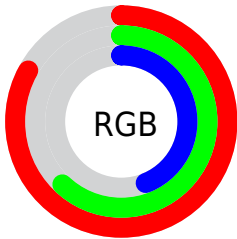
Format	Color
R_{YB}	212, 192, 113
Decimal	13933937
CIE _{Lab}	68.97, 15.16, 30.97
CIE _{LCh}	69, 34.483, 63.925
Yxy	39.3032, 0.4117, 0.3835
Android (android.graphics.Color)	4292124017 (0xFFD49D71)
YUV	168.4290, -27.3265, 38.2118
Hunter-Lab	62.6923, 10.4106, 24.0380

Details

The Decimal color **13933937** is a light color, and the websafe version is hex **CC9966**. A complement of this color would be **7448788**, and the grayscale version is **11119017**.

A 20% lighter version of the original color is **16766117**, and **10185280** is the 20% darker color. If you saturate the color by 10%, you get **13930844**, and if you desaturate by 10%, it is **13937030**.

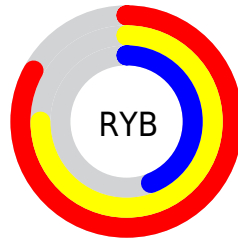
Distribution



Red (83%)

Green (62%)

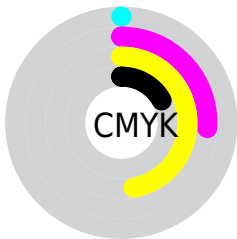
Blue (44%)



Red (83%)

Yellow (75%)

Blue (44%)

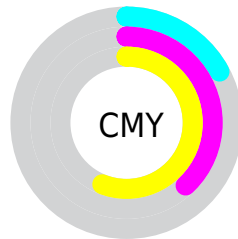


Cyan (0%)

Magenta (26%)

Yellow (47%)

Black (17%)



Cyan (17%)

Magenta (38%)

Yellow (56%)

Brightness & Saturation Gradients

These gradients show how the Decimal color 13933937 changes by changing the brightness by 10 percent. The first figure shows a shift by +10% for each color and the second figure -10%.

Similar to the brightness gradients but the following saturation gradients show a change of the Decimal color 13933937 by changing the saturation by 10% instead.

 13933937

 13933937

16777215

 12026712

 16766117

 10185280

 16773313

 8343849

 16777181

 6568467

 16777209

 4924416

 3215360

 1507328

 0

 13933937

 13933937

 13930844

 13937030

 13927751

 13940123

 13924913

 13942961

 13921820

 13946054

 13918727

 13949147

 13917696

 13952240

 13955071

 13958143

 13959167

Harmonies

Analogous

The Analogous color harmony consists of three colors that are next to each other on the color wheel.



14980231



13933937



12167274

Triad

The Triadic color harmony groups three colors that are evenly spaced from another and form a triangle on the color wheel.



13933937



5028267



11706332

Complementary

The Complementary color scheme is a pair of colors which are on the opposite of each other on the color wheel.



13933937



7448788

Split Complementary

Split-complementary colors differ from the complementary color scheme. The scheme consists of three colors, the original color and two neighbors of the complement color.



8628966



13933937



3520714

Square

The Square scheme is like the rectangle color scheme, but the four colors are evenly spaced on the color wheel.



13933937



7583628



5354464



13866436

Rectangle

The Rectangle color scheme consists of four colors that form a rectangle on the color wheel.



13933937



10792558



5354464



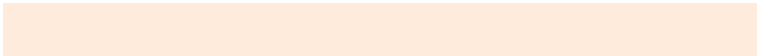
10724321

Sweetspot

The Sweet Spot groups the original color and five complimentary colors.



13933937



16772059



13922729



8418154



0



8421504

Same Dimension

The Same Dimension uses a secret algorithm to generate beautiful new colors.



13933937



16756848



13946225



7038304



11226112



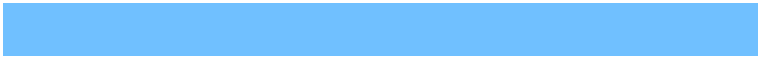
2822912

Inverse Universe

The Inverse Universe completely reimagines the original color for something new.



7448788



7389439



7436500



6317675



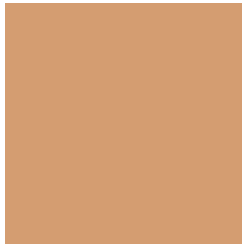
24491



6187

Previews

White Background



This preview shows how the Decimal color 13933937 looks on a white background.

Color Contrast Check

Large Text (above 18pt) WCAG AA × Fail

Any Text WCAG AA × Fail

Large Text (above 18pt) WCAG AAA × Fail

Any Text WCAG AAA × Fail

Black Background



This preview shows how the Decimal color 13933937 looks on a black background.

Color Contrast Check

Large Text (above 18pt) WCAG AA ✓ Pass

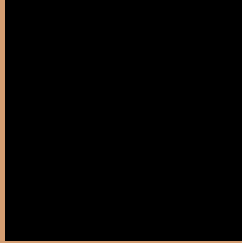
Any Text WCAG AA ✓ Pass

Large Text (above 18pt) WCAG AAA ✓ Pass

Any Text WCAG AAA ✓ Pass

If you want to check with other color combinations, try the [Color Contrast Checker](#).

Decimal 13933937 Background



This preview shows how black text looks on a background with the Decimal color 13933937.



This preview shows how white text looks on a background with the Decimal color 13933937.

Color Blindness Simulation

Color vision deficiency is a very complex topic, and I could not describe the different causes any better than Wikipedia does, so if you want to learn more, you should check out their [article about color blindness](#).


Dichromacy



Original Color
13933937

Protanopia
11970934

Deuteranopia
13279600



Tritanopia
14194594

Trichromacy



Original Color
13933937

Protanomaly
12690804

Deuteranomaly
13541488

Tritanomaly
14129552

Monochromacy



Original Color
13933937

Achromatopsia
11053224

Achromatomaly
12100756

CSS Examples

Text

The CSS property to change the color of the text to Decimal 13933937 is called "color". The color property can be set on classes, ids or directly on the HTML element.

This example shows how text in the color #D49D71 looks like.

```
.text, #text, p{  
  color:#D49D71  
}
```

If you want to add a text shadow in that color use the text-shadow property, you can generate a text shadow directly with our [CSS Text Shadow Generator](#).

Here you see how black text with a 4 pixel #D49D71 colored shadow looks like.

```
.shadow{ text-shadow: 4px 4px 2px #D49D71
}
```

Border

The CSS property to change the border of an element to Decimal 13933937 is called "border". The border property can be set on classes, ids or directly on the HTML element.

This example shows the color as border, it can be applied via the CSS property "border" or "border-color".

```
.border, #border, table{ border:4px solid
#D49D71 }
```

If only the border color should be changed use the property `border-color`.

```
.border{ border-color:#D49D71 }
```

If you want to add a box shadow in that color use:

Here you see how a box with a 4 pixel #D49D71 colored shadow looks like.

```
.boxshadow{ -moz-box-shadow:4px 4px 4px  
4px #D49D71; -webkit-box-shadow:4px 4px  
4px 4px #D49D71; box-shadow:4px 4px 4px  
4px #D49D71 }
```

Background

The CSS property to change the background color of an element to Decimal 13933937 is called "background". The background property can be set on classes, ids or directly on the HTML element.

```
.background, #background, body{  
background:#D49D71 }
```

If only the background color should be changed can be used:

```
.background{ background-color:#D49D71 }
```

This example shows the color as background, it is applied via the CSS property "background".

To optimize and compress your CSS code, you can use our [online CSS compressor and optimizer](#) based on csstidy. If you want to create a linear or radial gradient as background or border, check our [CSS Gradient Generator](#).

Hey! You found this booklet interesting? Support Converting Colors with the new Membership Option!

The pro membership hides all ads, plus gives you double the colors in the color bucket, and more awesome pro features!

[Learn more, Memberships starting at \\$2.50/m!](#)

**Follow me
on Twitter!**

@ConvertingColor