

Converting Colors

Decimal(13934736)

Have a look what the booklet for
Decimal(13934736) contains.

Decimal(13934736)	3
<i>Conversions</i>	4
<i>Details</i>	6
<i>Harmonies</i>	11
<i>Previews</i>	23
<i>Color Blindness Simulation</i>	26
<i>CSS Examples</i>	29

Color

Decimal(13934736)

Conversions

Conversions Part 1

Format	Color
Hex	D4A090
RGB	212, 160, 144
RGB Percent	83%, 63%, 56%
CMY	0.1686, 0.3725, 0.4353
CMYK	0.00, 0.25, 0.32, 0.17
HSL	14°, 44%, 70%
HSV	14°, 32%, 83%
XYZ	44.7562, 41.1523, 31.9698
YIQ	173.7240, 36.1280, 6.0480

Conversions

Conversions Part 2

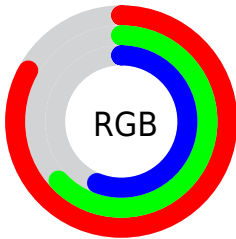
Format	Color
R _{YB}	212, 165, 144
Decimal	13934736
CIE Lab	70.28, 17.09, 15.83
CIE LCh	70, 23.294, 42.820
Yxy	41.1523, 0.3797, 0.3491
Android (android.graphics.Color)	4292124816 (0xFFD4A090)
YUV	173.7240, -14.6539, 33.5681
Hunter-Lab	64.1500, 12.2734, 15.3572

Details

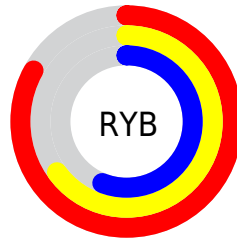
The Decimal color **13934736** is a light color, and the websafe version is hex **CC9999**. A complement of this color would be **9487572**, and the grayscale version is **11447982**.

A 20% lighter version of the original color is **16766918**, and **10251358** is the 20% darker color. If you saturate the color by 10%, you get **13930619**, and if you desaturate by 10%, it is **13938853**.

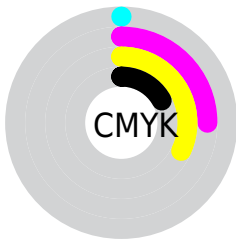
Distribution



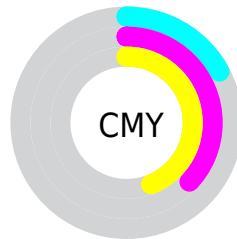
- Red (83%)
- Green (63%)
- Blue (56%)



- Red (83%)
- Yellow (65%)
- Blue (56%)



- Cyan (0%)
- Magenta (25%)
- Yellow (32%)
- Black (17%)



- Cyan (17%)
- Magenta (37%)
- Yellow (44%)

Brightness & Saturation Gradients

These gradients show how the Decimal color 13934736 changes by changing the brightness by 10 percent. The first figure shows a shift by +10% for each color and the second figure -10%.

Similar to the brightness gradients but the following saturation gradients show a change of the Decimal color 13934736 by changing the saturation by 10% instead.

 13934736

 13934736

16777215


 12093046

 16766918

 10251358

 16774114

 8475718

 6765616

 5056027

 3477760

 2031617

 0

 13934736

 13934736

 13930619

 13938853

 13926502

 13942970

 13922128

 13947344

 13918011

 13951461

 13913894

 13955578

 13909777

 13959167

 13906432

Harmonies

Analogous

The Analogous color harmony consists of three colors that are next to each other on the color wheel.



14130595



13934736



13084292

Triad

The Triadic color harmony groups three colors that are evenly spaced from another and form a triangle on the color wheel.



13934736



8632223



10464213

Complementary

The Complementary color scheme is a pair of colors which are on the opposite of each other on the color wheel.



13934736



9487572

Split Complementary

Split-complementary colors differ from the complementary color scheme. The scheme consists of three colors, the original color and two neighbors of the complement color.



8630740



13934736



7518388

Square

The Square scheme is like the rectangle color scheme, but the four colors are evenly spaced on the color wheel.



13934736



10138508



7452360



12297163

Rectangle

The Rectangle color scheme consists of four colors that form a rectangle on the color wheel.



13934736



12233602



7452360



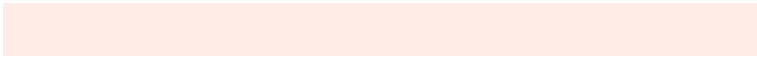
9809366

Sweetspot

The Sweet Spot groups the original color and five complimentary colors.



13934736



16772326



13930692



8418416



0



8421504

Same Dimension

The Same Dimension uses a secret algorithm to generate beautiful new colors.



13934736



16758174



13943440



7037792



11216896



2820608

Inverse Universe

The Inverse Universe completely reimagines the original color for something new.



9487572



10414335



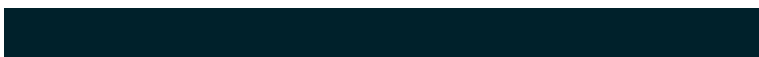
9478868



6318443



33707



8491

Previews

White Background



This preview shows how the Decimal color 13934736 looks on a white background.

Color Contrast Check

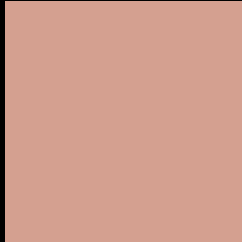
Large Text (above 18pt) WCAG AA × Fail

Any Text WCAG AA × Fail

Large Text (above 18pt) WCAG AAA × Fail

Any Text WCAG AAA × Fail

Black Background



This preview shows how the Decimal color 13934736 looks on a black background.

Color Contrast Check

Large Text (above 18pt) WCAG AA ✓ Pass

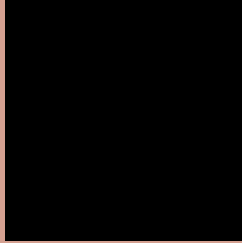
Any Text WCAG AA ✓ Pass

Large Text (above 18pt) WCAG AAA ✓ Pass

Any Text WCAG AAA ✓ Pass

If you want to check with other color combinations, try the [Color Contrast Checker](#).

Decimal 13934736 Background



This preview shows how black text looks on a background with the Decimal color 13934736.



This preview shows how white text looks on a background with the Decimal color 13934736.

Color Blindness Simulation

Color vision deficiency is a very complex topic, and I could not describe the different causes any better than Wikipedia does, so if you want to learn more, you should check out their [article about color blindness](#).


Dichromacy



Original Color
13934736

Protanopia
11840662

Deuteranopia
13084303



Tritanopia
14130344

Trichromacy



Original Color
13934736

Protanomaly
12626068

Deuteranomaly
13411471

Tritanomaly
14065055

Monochromacy



Original Color
13934736

Achromatopsia
11447982

Achromatomaly
12364195

CSS Examples

Text

The CSS property to change the color of the text to Decimal 13934736 is called "color". The color property can be set on classes, ids or directly on the HTML element.

This example shows how text in the color #D4A090 looks like.

```
.text, #text, p{  
  color:#D4A090  
}
```

If you want to add a text shadow in that color use the text-shadow property, you can generate a text shadow directly with our [CSS Text Shadow Generator](#).

Here you see how black text with a 4 pixel #D4A090 colored shadow looks like.

```
.shadow{ text-shadow: 4px 4px 2px #D4A090
}
```

Border

The CSS property to change the border of an element to Decimal 13934736 is called "border". The border property can be set on classes, ids or directly on the HTML element.

This example shows the color as border, it can be applied via the CSS property "border" or "border-color".

```
.border, #border, table{ border:4px solid
#D4A090 }
```

If only the border color should be changed use the property `border-color`.

```
.border{ border-color:#D4A090 }
```

If you want to add a box shadow in that color use:

Here you see how a box with a 4 pixel #D4A090 colored shadow looks like.

```
.boxshadow{ -moz-box-shadow:4px 4px 4px  
4px #D4A090; -webkit-box-shadow:4px 4px  
4px 4px #D4A090; box-shadow:4px 4px 4px  
4px #D4A090 }
```

Background

The CSS property to change the background color of an element to Decimal 13934736 is called "background". The background property can be set on classes, ids or directly on the HTML element.

```
.background, #background, body{  
background:#D4A090 }
```

If only the background color should be changed can be used:

```
.background{ background-color:#D4A090 }
```

This example shows the color as background, it is applied via the CSS property "background".

To optimize and compress your CSS code, you can use our [online CSS compressor and optimizer](#) based on csstidy. If you want to create a linear or radial gradient as background or border, check our [CSS Gradient Generator](#).

Hey! You found this booklet interesting? Support Converting Colors with the new Membership Option!

The pro membership hides all ads, plus gives you double the colors in the color bucket, and more awesome pro features!

[Learn more, Memberships starting at \\$2.50/m!](#)

**Follow me
on Twitter!**

@ConvertingColor