

# Converting Colors

Decimal(13935266)

Have a look what the booklet for  
Decimal(13935266) contains.

<b>Decimal(13935266)</b> .....	3
<i><b>Conversions</b></i> .....	4
<i><b>Details</b></i> .....	6
<i><b>Harmonies</b></i> .....	11
<i><b>Previews</b></i> .....	23
<i><b>Color Blindness Simulation</b></i> .....	26
<i><b>CSS Examples</b></i> .....	29

# **Color**

**Decimal(13935266)**

# Conversions

## Conversions Part 1

Format	Color
Hex	D4A2A2
RGB	212, 162, 162
RGB Percent	83%, 64%, 64%
CMY	0.1686, 0.3647, 0.3647
CMYK	0.00, 0.24, 0.24, 0.17
HSL	0°, 37%, 73%
HSV	0°, 24%, 83%
XYZ	46.5933, 42.4463, 39.9196
YIQ	176.9500, 29.8000, 10.6000

# Conversions

## Conversions Part 2

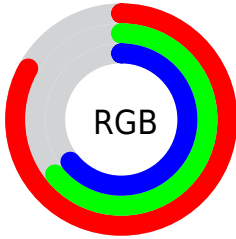
Format	Color
RYB	212, 162, 162
Decimal	13935266
CIELab	71.18, 18.48, 7.16
CIELCh	71, 19.818, 21.187
Yxy	42.4463, 0.3613, 0.3291
Android (android.graphics.Color)	4292125346 (0xFFD4A2A2)
YUV	176.9500, -7.3703, 30.7389
Hunter-Lab	65.1509, 13.6421, 9.2771

# Details

The Decimal color **13935266** is a light color, and the websafe version is hex **CC9999**. A complement of this color would be **10671316**, and the grayscale version is **11645361**.

A 20% lighter version of the original color is **16767449**, and **10251886** is the 20% darker color. If you saturate the color by 10%, you get **13929869**, and if you desaturate by 10%, it is **13940663**.

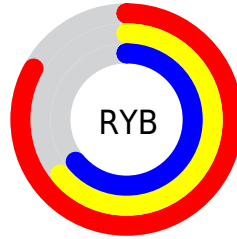
# Distribution



Red (83%)

Green (64%)

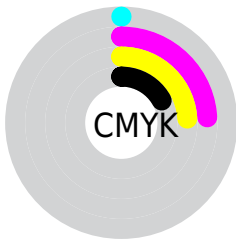
Blue (64%)



Red (83%)

Yellow (64%)

Blue (64%)

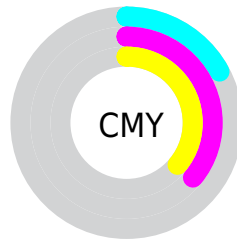


Cyan (0%)

Magenta (24%)

Yellow (24%)

Black (17%)



Cyan (17%)

Magenta (36%)

Yellow (36%)

# Brightness & Saturation Gradients

These gradients show how the Decimal color 13935266 changes by changing the brightness by 10 percent. The first figure shows a shift by +10% for each color and the second figure -10%.

Similar to the brightness gradients but the following saturation gradients show a change of the Decimal color 13935266 by changing the saturation by 10% instead.



 13935266

 13935266

16777215

 12093576

 16767449

 10251886

 16774901

 8541782

 6831679

 5187369

 3543573

 2293760

 0

 13935266

 13935266

 13929869

 13940663

 13924472

 13946060

 13918818

 13951714

 13913421

 13957111

 13908024

 13959167

 13902627

 13897230

 13893632

# Harmonies

## Analogous

The Analogous color harmony consists of three colors that are next to each other on the color wheel.



13607604



13935266



13608595

# Triad

The Triadic color harmony groups three colors that are evenly spaced from another and form a triangle on the color wheel.



13935266



10139287



9679313

# Complementary

The Complementary color scheme is a pair of colors which are on the opposite of each other on the color wheel.



13935266



10671316

# Split Complementary

Split-complementary colors differ from the complementary color scheme. The scheme consists of three colors, the original color and two neighbors of the complement color.



8500938



13935266



8894632

# Square

The Square scheme is like the rectangle color scheme, but the four colors are evenly spaced on the color wheel.



13935266



11514252



8239547



11250640

# Rectangle

The Rectangle color scheme consists of four colors that form a rectangle on the color wheel.



13935266



13085069



8239547



9221072



# Sweetspot

The Sweet Spot groups the original color and five complimentary colors.



13935266



16772589



13935316



8418677



0



8421504



# Same Dimension

The Same Dimension uses a secret algorithm to generate beautiful new colors.



13935266



16758968



13941666



7037024



11206656



2818048



# Inverse Universe

The Inverse Universe completely reimagines the original color for something new.



10671316



12124159



10664916



6318955



43947

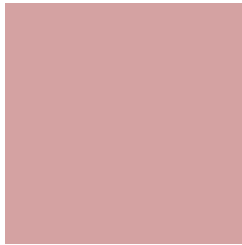


11051



# Previews

## White Background



This preview shows how the Decimal color 13935266 looks on a white background.

## Color Contrast Check

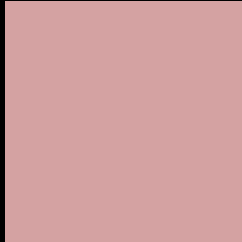
Large Text (above 18pt) WCAG AA × Fail

Any Text WCAG AA × Fail

Large Text (above 18pt) WCAG AAA × Fail

Any Text WCAG AAA × Fail

# Black Background



This preview shows how the Decimal color 13935266 looks on a black background.

## Color Contrast Check

Large Text (above 18pt) WCAG AA ✓ Pass

Any Text WCAG AA ✓ Pass

Large Text (above 18pt) WCAG AAA ✓ Pass

Any Text WCAG AAA ✓ Pass

If you want to check with other color combinations, try the [Color Contrast Checker](#).



## Decimal 13935266 Background



This preview shows how black text looks on a background with the Decimal color 13935266.




This preview shows how white text looks on a background with the Decimal color 13935266.

# Color Blindness Simulation

Color vision deficiency is a very complex topic, and I could not describe the different causes any better than Wikipedia does, so if you want to learn more, you should check out their [article about color blindness](#).

## Dichromacy





**Tritanopia**  
1400301

# Trichromacy



**Original Color**  
13935266

**Protanomaly**  
12561062

**Deuteranomaly**  
13280929

**Tritanomaly**  
14000553

# Monochromacy



**Original Color**  
13935266

**Achromatopsia**  
11645361

**Achromatomaly**  
12496044

# CSS Examples

## Text

The CSS property to change the color of the text to Decimal 13935266 is called "color". The color property can be set on classes, ids or directly on the HTML element.

This example shows how text in the color #D4A2A2 looks like.

```
.text, #text, p{  
  color:#D4A2A2  
}
```

If you want to add a text shadow in that color use the text-shadow property, you can generate a text shadow directly with our [CSS Text Shadow Generator](#).

Here you see how black text with a 4 pixel #D4A2A2 colored shadow looks like.

```
.shadow{ text-shadow: 4px 4px 2px #D4A2A2
}
```

## Border

The CSS property to change the border of an element to Decimal 13935266 is called "border". The border property can be set on classes, ids or directly on the HTML element.

This example shows the color as border, it can be applied via the CSS property "border" or "border-color".

```
.border, #border, table{ border:4px solid
#D4A2A2 }
```

If only the border color should be changed use the property `border-color`.

```
.border{ border-color:#D4A2A2 }
```

If you want to add a box shadow in that color use:

Here you see how a box with a 4 pixel #D4A2A2 colored shadow looks like.

```
.boxshadow{ -moz-box-shadow:4px 4px 4px  
4px #D4A2A2; -webkit-box-shadow:4px 4px  
4px 4px #D4A2A2; box-shadow:4px 4px 4px  
4px #D4A2A2 }
```

# Background

The CSS property to change the background color of an element to Decimal 13935266 is called "background". The background property can be set on classes, ids or directly on the HTML element.

```
.background, #background, body{  
background:#D4A2A2 }
```

If only the background color should be changed can be used:

```
.background{ background-color:#D4A2A2 }
```

This example shows the color as background, it is applied via the CSS property "background".

To optimize and compress your CSS code, you can use our [online CSS compressor and optimizer](#) based on csstidy. If you want to create a linear or radial gradient as background or border, check our [CSS Gradient Generator](#).



Hey! You found this booklet interesting? Support Converting Colors with the new Membership Option!

The pro membership hides all ads, plus gives you double the colors in the color bucket, and more awesome pro features!

**[Learn more, Memberships starting at \\$2.50/m!](#)**

**Follow me  
on Twitter!**

@ConvertingColor