

# Converting Colors

Decimal(13936009)

Have a look what the booklet for  
Decimal(13936009) contains.

<b>Decimal(13936009)</b> .....	3
<i><b>Conversions</b></i> .....	4
<i><b>Details</b></i> .....	6
<i><b>Harmonies</b></i> .....	11
<i><b>Previews</b></i> .....	23
<i><b>Color Blindness Simulation</b></i> .....	26
<i><b>CSS Examples</b></i> .....	29

# **Color**

**Decimal(13936009)**

# Conversions

## Conversions Part 1

<b>Format</b>	<b>Color</b>
Hex	D4A589
RGB	212, 165, 137
RGB Percent	83%, 65%, 54%
CMY	0.1686, 0.3529, 0.4627
CMYK	0.00, 0.22, 0.35, 0.17
HSL	22°, 47%, 68%
HSV	22°, 35%, 83%
XYZ	45.1219, 42.7135, 29.5333
YIQ	175.8610, 37.0000, 1.2560

# Conversions

## Conversions Part 2

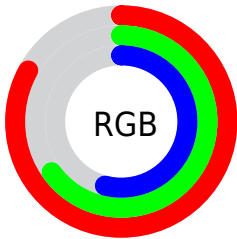
<b>Format</b>	<b>Color</b>
<b>R<sub>YB</sub></b>	212, 182, 137
Decimal	13936009
CIE <sub>Lab</sub>	71.36, 13.50, 21.16
CIE <sub>LCh</sub>	71, 25.096, 57.464
Yxy	42.7135, 0.3844, 0.3639
Android (android.graphics.Color)	4292126089 (0xFFD4A589)
YUV	175.8610, -19.1585, 31.6939
Hunter-Lab	65.3555, 8.8653, 18.9566

# Details

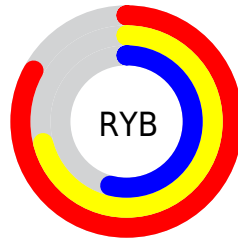
The Decimal color **13936009** is a light color, and the websafe version is hex **CC9966**. A complement of this color would be **9025748**, and the grayscale version is **11579568**.

A 20% lighter version of the original color is **16768191**, and **10252631** is the 20% darker color. If you saturate the color by 10%, you get **13932660**, and if you desaturate by 10%, it is **13939358**.

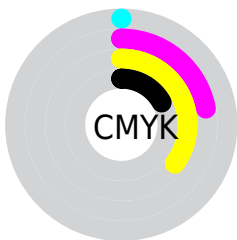
# Distribution



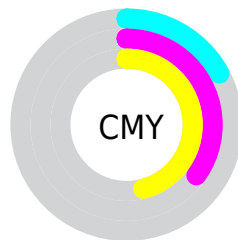
- Red (83%)
- Green (65%)
- Blue (54%)



- Red (83%)
- Yellow (71%)
- Blue (54%)



- Cyan (0%)
- Magenta (22%)
- Yellow (35%)
- Black (17%)



- Cyan (17%)
- Magenta (35%)
- Yellow (46%)

# Brightness & Saturation Gradients

These gradients show how the Decimal color 13936009 changes by changing the brightness by 10 percent. The first figure shows a shift by +10% for each color and the second figure -10%.

Similar to the brightness gradients but the following saturation gradients show a change of the Decimal color 13936009 by changing the saturation by 10% instead.



 13936009

 13936009

16777215

 12094320

 16768191

 10252631

 16775642

 8476991

 16777207

 6766889

 5057300

 3479040

 1966080

 0

 13936009

 13936009

 13932660

 13939358

 13929055

 13942963

 13925705

 13946313

 13922356

 13949662

 13919007

 13953011

 13915402

 13956607

 13913856

 13959167

# Harmonies

## Analogous

The Analogous color harmony consists of three colors that are next to each other on the color wheel.



14524315



13936009



12758401

# Triad

The Triadic color harmony groups three colors that are evenly spaced from another and form a triangle on the color wheel.



13936009



7912620



11578071

# Complementary

The Complementary color scheme is a pair of colors which are on the opposite of each other on the color wheel.



13936009



9025748

# Split Complementary

Split-complementary colors differ from the complementary color scheme. The scheme consists of three colors, the original color and two neighbors of the complement color.



9482716



13936009



7125955

# Square

The Square scheme is like the rectangle color scheme, but the four colors are evenly spaced on the color wheel.



13936009



9419158



7715029



13279944

# Rectangle

The Rectangle color scheme consists of four colors that form a rectangle on the color wheel.



13936009



11711107



7715029



10857690

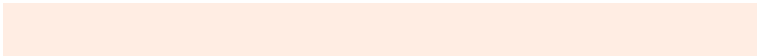


# Sweetspot

The Sweet Spot groups the original color and five complimentary colors.



13936009



16772579



13928888



8418671



0



8421504



# Same Dimension

The Same Dimension uses a secret algorithm to generate beautiful new colors.



13936009



16759956



13945481



7038048



11223040



2822144

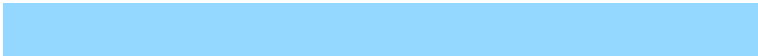


# Inverse Universe

The Inverse Universe completely reimagines the original color for something new.



9025748



9754623



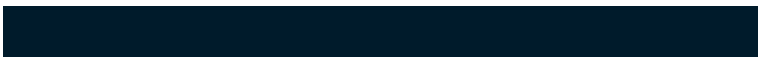
9016276



6317931



27563



6955



# Previews

## White Background



This preview shows how the Decimal color 13936009 looks on a white background.

## Color Contrast Check

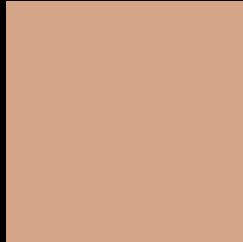
Large Text (above 18pt) WCAG AA × Fail

Any Text WCAG AA × Fail

Large Text (above 18pt) WCAG AAA × Fail

Any Text WCAG AAA × Fail

# Black Background



This preview shows how the Decimal color 13936009 looks on a black background.

## Color Contrast Check

Large Text (above 18pt) WCAG AA ✓ Pass

Any Text WCAG AA ✓ Pass

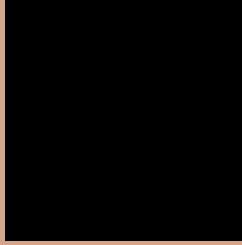
Large Text (above 18pt) WCAG AAA ✓ Pass

Any Text WCAG AAA ✓ Pass

If you want to check with other color combinations, try the [Color Contrast Checker](#).



## Decimal 13936009 Background



This preview shows how black text looks on a background with the Decimal color 13936009.



This preview shows how white text looks on a background with the Decimal color 13936009.

# Color Blindness Simulation

Color vision deficiency is a very complex topic, and I could not describe the different causes any better than Wikipedia does, so if you want to learn more, you should check out their [article about color blindness](#).


## Dichromacy



**Original Color**  
13936009

**Protanopia**  
12234638

**Deuteranopia**  
13478024



**Tritanopia**  
14196908

# Trichromacy



**Original Color**  
13936009

**Protanomaly**  
12823436

**Deuteranomaly**  
13674376

**Tritanomaly**  
14131871

# Monochromacy



**Original Color**  
13936009

**Achromatopsia**  
11579568

**Achromatomaly**  
12430498

# CSS Examples

## Text

The CSS property to change the color of the text to Decimal 13936009 is called "color". The color property can be set on classes, ids or directly on the HTML element.

This example shows how text in the color #D4A589 looks like.

```
.text, #text, p{  
    color:#D4A589  
}
```

If you want to add a text shadow in that color use the text-shadow property, you can generate a text shadow directly with our [CSS Text Shadow Generator](#).

Here you see how black text with a 4 pixel #D4A589 colored shadow looks like.

```
.shadow{ text-shadow: 4px 4px 2px #D4A589
}
```

## Border

The CSS property to change the border of an element to Decimal 13936009 is called "border". The border property can be set on classes, ids or directly on the HTML element.

This example shows the color as border, it can be applied via the CSS property "border" or "border-color".

```
.border, #border, table{ border:4px solid
#D4A589 }
```

If only the border color should be changed use the property `border-color`.

```
.border{ border-color:#D4A589 }
```

If you want to add a box shadow in that color use:

Here you see how a box with a 4 pixel #D4A589 colored shadow looks like.

```
.boxshadow{ -moz-box-shadow:4px 4px 4px  
4px #D4A589; -webkit-box-shadow:4px 4px  
4px 4px #D4A589; box-shadow:4px 4px 4px  
4px #D4A589 }
```

# Background

The CSS property to change the background color of an element to Decimal 13936009 is called "background". The background property can be set on classes, ids or directly on the HTML element.

```
.background, #background, body{  
background:#D4A589 }
```

If only the background color should be changed can be used:

```
.background{ background-color:#D4A589 }
```

This example shows the color as background, it is applied via the CSS property "background".

To optimize and compress your CSS code, you can use our [online CSS compressor and optimizer](#) based on csstidy. If you want to create a linear or radial gradient as background or border, check our [CSS Gradient Generator](#).



Hey! You found this booklet interesting? Support Converting Colors with the new Membership Option!

The pro membership hides all ads, plus gives you double the colors in the color bucket, and more awesome pro features!

**[Learn more, Memberships starting at \\$2.50/m!](#)**

**Follow me  
on Twitter!**

@ConvertingColor