

Converting Colors

Decimal(13936015)

Have a look what the booklet for
Decimal(13936015) contains.

Decimal(13936015)	3
<i>Conversions</i>	4
<i>Details</i>	6
<i>Harmonies</i>	11
<i>Previews</i>	23
<i>Color Blindness Simulation</i>	26
<i>CSS Examples</i>	29

Color

Decimal(13936015)

Conversions

Conversions Part 1

Format	Color
Hex	D4A58F
RGB	212, 165, 143
RGB Percent	83%, 65%, 56%
CMY	0.1686, 0.3529, 0.4392
CMYK	0.00, 0.22, 0.33, 0.17
HSL	19°, 45%, 70%
HSV	19°, 33%, 83%
XYZ	45.5644, 42.8905, 31.8638
YIQ	176.5450, 35.0740, 3.1220

Conversions

Conversions Part 2

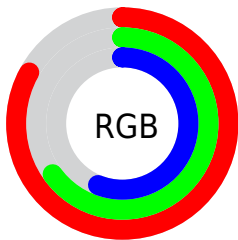
Format	Color
R _{YB}	212, 175, 143
Decimal	13936015
CIE Lab	71.48, 14.25, 18.05
CIE LCh	71, 22.993, 51.705
Yxy	42.8905, 0.3787, 0.3565
Android (android.graphics.Color)	4292126095 (0xFFD4A58F)
YUV	176.5450, -16.5377, 31.0940
Hunter-Lab	65.4908, 9.5802, 16.9967

Details

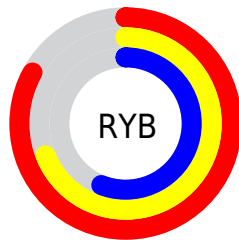
The Decimal color **13936015** is a light color, and the websafe version is hex **CC9999**. A complement of this color would be **9420500**, and the grayscale version is **11645361**.

A 20% lighter version of the original color is **16768197**, and **10252637** is the 20% darker color. If you saturate the color by 10%, you get **13932410**, and if you desaturate by 10%, it is **13939620**.

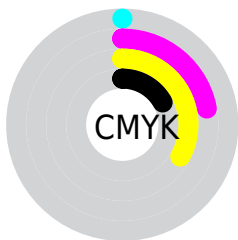
Distribution



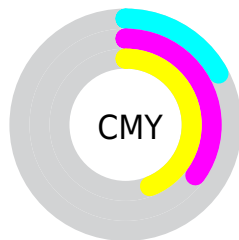
- Red (83%)
- Green (65%)
- Blue (56%)



- Red (83%)
- Yellow (69%)
- Blue (56%)



- Cyan (0%)
- Magenta (22%)
- Yellow (33%)
- Black (17%)



- Cyan (17%)
- Magenta (35%)
- Yellow (44%)

Brightness & Saturation Gradients

These gradients show how the Decimal color 13936015 changes by changing the brightness by 10 percent. The first figure shows a shift by +10% for each color and the second figure -10%.

Similar to the brightness gradients but the following saturation gradients show a change of the Decimal color 13936015 by changing the saturation by 10% instead.

 13936015

 13936015

16777215

 12094325

 16768197

 10252637

 16775649

 8476741

16777213

 6766894

 5057305

 3544576

 2031616

 0

 13936015

 13936015

 13932410

 13939620

 13928549

 13943481

 13924943

 13947087

 13921082

 13950948

 13917477

 13954553

 13913616

 13958399

 13911040

 13959167

Harmonies

Analogous

The Analogous color harmony consists of three colors that are next to each other on the color wheel.



14328225



13936015



12889222

Triad

The Triadic color harmony groups three colors that are evenly spaced from another and form a triangle on the color wheel.



13936015



8502184



11250902

Complementary

The Complementary color scheme is a pair of colors which are on the opposite of each other on the color wheel.



13936015



9420500

Split Complementary

Split-complementary colors differ from the complementary color scheme. The scheme consists of three colors, the original color and two neighbors of the complement color.



9352152



13936015



7650238

Square

The Square scheme is like the rectangle color scheme, but the four colors are evenly spaced on the color wheel.



13936015



9943189



7977167



12953033

Rectangle

The Rectangle color scheme consists of four colors that form a rectangle on the color wheel.



13936015



11972742



7977167



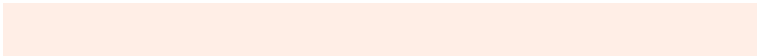
10596056

Sweetspot

The Sweet Spot groups the original color and five complimentary colors.



13936015



16772838



13930430



8418672



0



8421504

Same Dimension

The Same Dimension uses a secret algorithm to generate beautiful new colors.



13936015



16759708



13944719



7038048



11220480



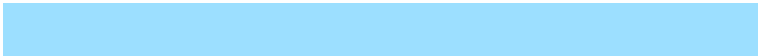
2821632

Inverse Universe

The Inverse Universe completely reimagines the original color for something new.



9420500



10280959



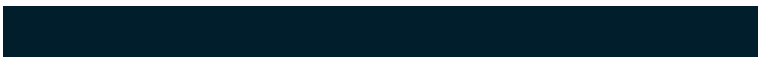
9411796



6318187



29867



7723

Previews

White Background



This preview shows how the Decimal color 13936015 looks on a white background.

Color Contrast Check

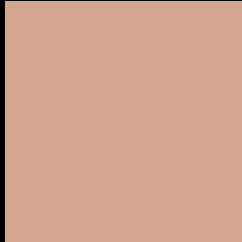
Large Text (above 18pt) WCAG AA × Fail

Any Text WCAG AA × Fail

Large Text (above 18pt) WCAG AAA × Fail

Any Text WCAG AAA × Fail

Black Background



This preview shows how the Decimal color 13936015 looks on a black background.

Color Contrast Check

Large Text (above 18pt) WCAG AA ✓ Pass

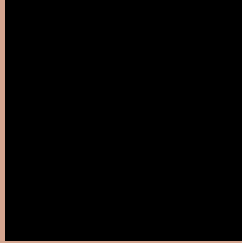
Any Text WCAG AA ✓ Pass

Large Text (above 18pt) WCAG AAA ✓ Pass

Any Text WCAG AAA ✓ Pass

If you want to check with other color combinations, try the [Color Contrast Checker](#).

Decimal 13936015 Background



This preview shows how black text looks on a background with the Decimal color 13936015.



This preview shows how white text looks on a background with the Decimal color 13936015.

Color Blindness Simulation

Color vision deficiency is a very complex topic, and I could not describe the different causes any better than Wikipedia does, so if you want to learn more, you should check out their [article about color blindness](#).

Dichromacy



Original Color
13936015

Protanopia
12169108

Deuteranopia
13412494



Tritanopia
14131629

Trichromacy



Original Color
13936015

Protanomaly
12823442

Deuteranomaly
13608846

Tritanomaly
14066338

Monochromacy



Original Color
13936015

Achromatopsia
11645361

Achromatomaly
12496293

CSS Examples

Text

The CSS property to change the color of the text to Decimal 13936015 is called "color". The color property can be set on classes, ids or directly on the HTML element.

This example shows how text in the color #D4A58F looks like.

```
.text, #text, p{  
    color:#D4A58F  
}
```

If you want to add a text shadow in that color use the text-shadow property, you can generate a text shadow directly with our [CSS Text Shadow Generator](#).

Here you see how black text with a 4 pixel #D4A58F colored shadow looks like.

```
.shadow{ text-shadow: 4px 4px 2px #D4A58F
}
```

Border

The CSS property to change the border of an element to Decimal 13936015 is called "border". The border property can be set on classes, ids or directly on the HTML element.

This example shows the color as border, it can be applied via the CSS property "border" or "border-color".

```
.border, #border, table{ border:4px solid
#D4A58F }
```

If only the border color should be changed use the property `border-color`.

```
.border{ border-color:#D4A58F }
```

If you want to add a box shadow in that color use:

Here you see how a box with a 4 pixel #D4A58F colored shadow looks like.

```
.boxshadow{ -moz-box-shadow:4px 4px 4px  
4px #D4A58F; -webkit-box-shadow:4px 4px  
4px 4px #D4A58F; box-shadow:4px 4px 4px  
4px #D4A58F }
```

Background

The CSS property to change the background color of an element to Decimal 13936015 is called "background". The background property can be set on classes, ids or directly on the HTML element.

```
.background, #background, body{  
background:#D4A58F }
```

If only the background color should be changed can be used:

```
.background{ background-color:#D4A58F }
```

This example shows the color as background, it is applied via the CSS property "background".

To optimize and compress your CSS code, you can use our [online CSS compressor and optimizer](#) based on csstidy. If you want to create a linear or radial gradient as background or border, check our [CSS Gradient Generator](#).

Hey! You found this booklet interesting? Support Converting Colors with the new Membership Option!

The pro membership hides all ads, plus gives you double the colors in the color bucket, and more awesome pro features!

[Learn more, Memberships starting at \\$2.50/m!](#)

**Follow me
on Twitter!**

@ConvertingColor