

Converting Colors

Decimal(13936520)

Have a look what the booklet for
Decimal(13936520) contains.

Decimal(13936520)	3
<i>Conversions</i>	4
<i>Details</i>	6
<i>Harmonies</i>	11
<i>Previews</i>	23
<i>Color Blindness Simulation</i>	26
<i>CSS Examples</i>	29

Color

Decimal(13936520)

Conversions

Conversions Part 1

Format	Color
Hex	D4A788
RGB	212, 167, 136
RGB Percent	83%, 65%, 53%
CMY	0.1686, 0.3451, 0.4667
CMYK	0.00, 0.21, 0.36, 0.17
HSL	24°, 47%, 68%
HSV	24°, 36%, 83%
XYZ	45.4140, 43.4121, 29.2783
YIQ	176.9210, 36.7710, -0.1010

Conversions

Conversions Part 2

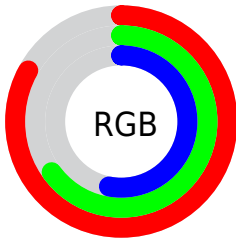
Format	Color
R _Y B	212, 188, 136
Decimal	13936520
CIE Lab	71.83, 12.30, 22.35
CIE LCh	72, 25.507, 61.181
Yxy	43.4121, 0.3845, 0.3676
Android (android.graphics.Color)	4292126600 (0xFFD4A788)
YUV	176.9210, -20.1741, 30.7643
Hunter-Lab	65.8878, 7.7297, 19.7750

Details

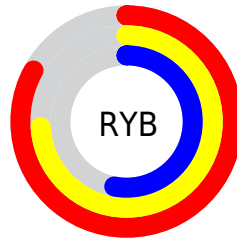
The Decimal color **13936520** is a light color, and the websafe version is hex **CC9966**. A complement of this color would be **8959444**, and the grayscale version is **11645361**.

A 20% lighter version of the original color is **16768701**, and **10253142** is the 20% darker color. If you saturate the color by 10%, you get **13933171**, and if you desaturate by 10%, it is **13939869**.

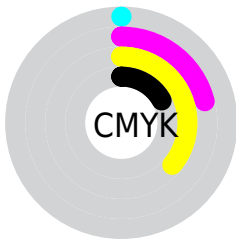
Distribution



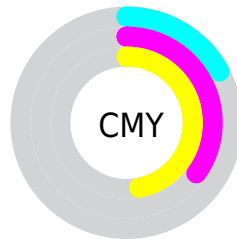
- Red (83%)
- Green (65%)
- Blue (53%)



- Red (83%)
- Yellow (74%)
- Blue (53%)



- Cyan (0%)
- Magenta (21%)
- Yellow (36%)
- Black (17%)



- Cyan (17%)
- Magenta (35%)
- Yellow (47%)

Brightness & Saturation Gradients

These gradients show how the Decimal color 13936520 changes by changing the brightness by 10 percent. The first figure shows a shift by +10% for each color and the second figure -10%.

Similar to the brightness gradients but the following saturation gradients show a change of the Decimal color 13936520 by changing the saturation by 10% instead.

 13936520

 13936520


16777215

 12094831

 16768701

 10253142

 16776153

 8477246

 16777206

 6767400

 5057811

 3479552

 1966080

 0

 13936520

 13936520

 13933171

 13939869

 13930078

 13942962

 13926728

 13946312

 13923635

 13949405

 13920286

 13952754

 13917193

 13955839

 13915648

 13959167

Harmonies

Analogous

The Analogous color harmony consists of three colors that are next to each other on the color wheel.



14655897



13936520



12627842

Triad

The Triadic color harmony groups three colors that are evenly spaced from another and form a triangle on the color wheel.



13936520



7716272



11905752

Complementary

The Complementary color scheme is a pair of colors which are on the opposite of each other on the color wheel.



13936520



8959444

Split Complementary

Split-complementary colors differ from the complementary color scheme. The scheme consists of three colors, the original color and two neighbors of the complement color.



9810654



13936520



7126215

Square

The Square scheme is like the rectangle color scheme, but the four colors are evenly spaced on the color wheel.



13936520



9223065



7911640



13607879

Rectangle

The Rectangle color scheme consists of four colors that form a rectangle on the color wheel.



13936520



11580548



7911640



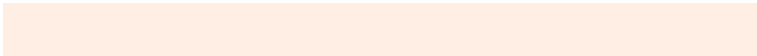
11250907

Sweetspot

The Sweet Spot groups the original color and five complimentary colors.



13936520



16772835



13928630



8418927



0



8421504

Same Dimension

The Same Dimension uses a secret algorithm to generate beautiful new colors.



13936520



16760465



13945992



7038304



11224576



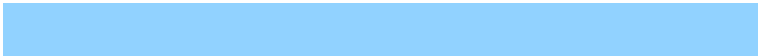
2822656

Inverse Universe

The Inverse Universe completely reimagines the original color for something new.



8959444



9556735



8949972



6317931



26027



6699

Previews

White Background



This preview shows how the Decimal color 13936520 looks on a white background.

Color Contrast Check

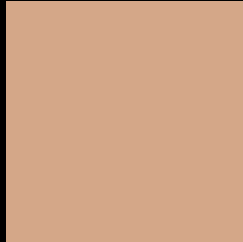
Large Text (above 18pt) WCAG AA × Fail

Any Text WCAG AA × Fail

Large Text (above 18pt) WCAG AAA × Fail

Any Text WCAG AAA × Fail

Black Background



This preview shows how the Decimal color 13936520 looks on a black background.

Color Contrast Check

Large Text (above 18pt) WCAG AA ✓ Pass

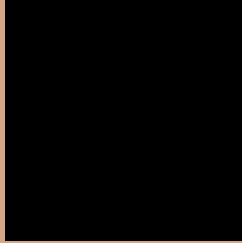
Any Text WCAG AA ✓ Pass

Large Text (above 18pt) WCAG AAA ✓ Pass

Any Text WCAG AAA ✓ Pass

If you want to check with other color combinations, try the [Color Contrast Checker](#).

Decimal 13936520 Background



This preview shows how black text looks on a background with the Decimal color 13936520.



This preview shows how white text looks on a background with the Decimal color 13936520.

Color Blindness Simulation

Color vision deficiency is a very complex topic, and I could not describe the different causes any better than Wikipedia does, so if you want to learn more, you should check out their [article about color blindness](#).

Dichromacy





Tritanopia
14197422

Trichromacy



Original Color
13936520

Protanomaly
12889483

Deuteranomaly
13740168

Tritanomaly
14132384

Monochromacy



Original Color
13936520

Achromatopsia
11645361

Achromatomaly
12496290

CSS Examples

Text

The CSS property to change the color of the text to Decimal 13936520 is called "color". The color property can be set on classes, ids or directly on the HTML element.

This example shows how text in the color #D4A788 looks like.

```
.text, #text, p{  
    color:#D4A788  
}
```

If you want to add a text shadow in that color use the text-shadow property, you can generate a text shadow directly with our [CSS Text Shadow Generator](#).

Here you see how black text with a 4 pixel #D4A788 colored shadow looks like.

```
.shadow{ text-shadow: 4px 4px 2px #D4A788
}
```

Border

The CSS property to change the border of an element to Decimal 13936520 is called "border". The border property can be set on classes, ids or directly on the HTML element.

This example shows the color as border, it can be applied via the CSS property "border" or "border-color".

```
.border, #border, table{ border:4px solid
#D4A788 }
```

If only the border color should be changed use the property `border-color`.

```
.border{ border-color:#D4A788 }
```

If you want to add a box shadow in that color use:

Here you see how a box with a 4 pixel #D4A788 colored shadow looks like.

```
.boxshadow{ -moz-box-shadow:4px 4px 4px  
4px #D4A788; -webkit-box-shadow:4px 4px  
4px 4px #D4A788; box-shadow:4px 4px 4px  
4px #D4A788 }
```

Background

The CSS property to change the background color of an element to Decimal 13936520 is called "background". The background property can be set on classes, ids or directly on the HTML element.

```
.background, #background, body{  
background:#D4A788 }
```

If only the background color should be changed can be used:

```
.background{ background-color:#D4A788 }
```

This example shows the color as background, it is applied via the CSS property "background".

To optimize and compress your CSS code, you can use our [online CSS compressor and optimizer](#) based on csstidy. If you want to create a linear or radial gradient as background or border, check our [CSS Gradient Generator](#).

Hey! You found this booklet interesting? Support Converting Colors with the new Membership Option!

The pro membership hides all ads, plus gives you double the colors in the color bucket, and more awesome pro features!

[Learn more, Memberships starting at \\$2.50/m!](#)

**Follow me
on Twitter!**

@ConvertingColor