

Converting Colors

Decimal(13937065)

Have a look what the booklet for
Decimal(13937065) contains.

Decimal(13937065)	3
<i>Conversions</i>	4
<i>Details</i>	6
<i>Harmonies</i>	11
<i>Previews</i>	23
<i>Color Blindness Simulation</i>	26
<i>CSS Examples</i>	29

Color

Decimal(13937065)

Conversions

Conversions Part 1

Format	Color
Hex	D4A9A9
RGB	212, 169, 169
RGB Percent	83%, 66%, 66%
CMY	0.1686, 0.3373, 0.3373
CMYK	0.00, 0.20, 0.20, 0.17
HSL	0°, 33%, 75%
HSV	0°, 20%, 83%
XYZ	48.5008, 45.2376, 43.7116
YIQ	181.8570, 25.6280, 9.1160

Conversions

Conversions Part 2

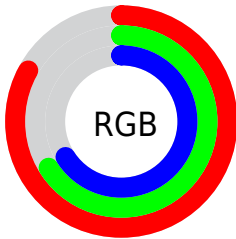
Format	Color
R _Y B	212, 169, 169
Decimal	13937065
CIE Lab	73.05, 15.72, 5.99
CIE LCh	73, 16.827, 20.858
Yxy	45.2376, 0.3529, 0.3291
Android (android.graphics.Color)	4292127145 (0xFFD4A9A9)
YUV	181.8570, -6.3385, 26.4354
Hunter-Lab	67.2589, 11.0144, 8.5486

Details

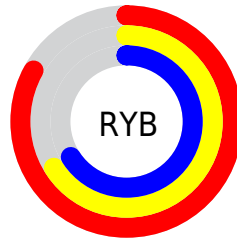
The Decimal color **13937065** is a light color, and the websafe version is hex **CC9999**. A complement of this color would be **11130068**, and the grayscale version is **11974326**.

A 20% lighter version of the original color is **16769248**, and **10319221** is the 20% darker color. If you saturate the color by 10%, you get **13931668**, and if you desaturate by 10%, it is **13942462**.

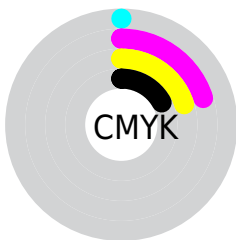
Distribution



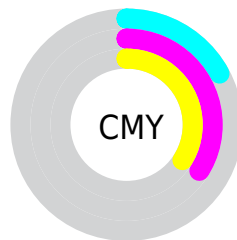
- Red (83%)
- Green (66%)
- Blue (66%)



- Red (83%)
- Yellow (66%)
- Blue (66%)



- Cyan (0%)
- Magenta (20%)
- Yellow (20%)
- Black (17%)



- Cyan (17%)
- Magenta (34%)
- Yellow (34%)

Brightness & Saturation Gradients

These gradients show how the Decimal color 13937065 changes by changing the brightness by 10 percent. The first figure shows a shift by +10% for each color and the second figure -10%.

Similar to the brightness gradients but the following saturation gradients show a change of the Decimal color 13937065 by changing the saturation by 10% instead.

 13937065

 13937065

16777215

 12095119

 16769248

 10319221

 16776701

 8543324

 6833221

 5254703

 3676186

 2359296

 0

 13937065

 13937065

 13931668

 13942462

 13926271

 13947859

 13920617

 13953513

 13915220

 13958910

 13909823

 13959167

 13904426

 13899029

 13893632

Harmonies

Analogous

The Analogous color harmony consists of three colors that are next to each other on the color wheel.



13674937



13937065



13675676

Triad

The Triadic color harmony groups three colors that are evenly spaced from another and form a triangle on the color wheel.



13937065



10664608



10270417

Complementary

The Complementary color scheme is a pair of colors which are on the opposite of each other on the color wheel.



13937065



11130068

Split Complementary

Split-complementary colors differ from the complementary color scheme. The scheme consists of three colors, the original color and two neighbors of the complement color.



9353931



13937065



9682094

Square

The Square scheme is like the rectangle color scheme, but the four colors are evenly spaced on the color wheel.



13937065



11843222



9157822



11579856

Rectangle

The Rectangle color scheme consists of four colors that form a rectangle on the color wheel.



13937065



13217687



9157822



9943248

Sweetspot

The Sweet Spot groups the original color and five complimentary colors.



13937065



16773360



13937108



8419191



0



8421504

Same Dimension

The Same Dimension uses a secret algorithm to generate beautiful new colors.



13937065



16761538



13942697



7037024



11206656



2818048

Inverse Universe

The Inverse Universe completely reimagines the original color for something new.



11130068



12779519



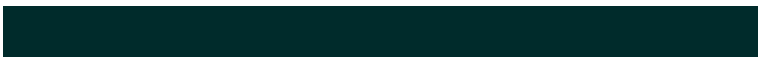
11124692



6318955



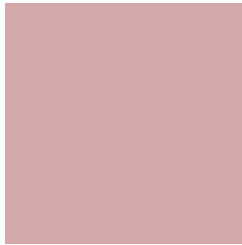
43947



11051

Previews

White Background



This preview shows how the Decimal color 13937065 looks on a white background.

Color Contrast Check

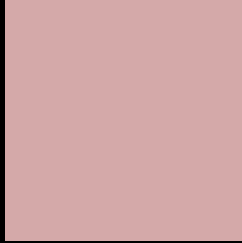
Large Text (above 18pt) WCAG AA × Fail

Any Text WCAG AA × Fail

Large Text (above 18pt) WCAG AAA × Fail

Any Text WCAG AAA × Fail

Black Background



This preview shows how the Decimal color 13937065 looks on a black background.

Color Contrast Check

Large Text (above 18pt) WCAG AA ✓ Pass

Any Text WCAG AA ✓ Pass

Large Text (above 18pt) WCAG AAA ✓ Pass

Any Text WCAG AAA ✓ Pass

If you want to check with other color combinations, try the [Color Contrast Checker](#).

Decimal 13937065 Background



This preview shows how black text looks on a background with the Decimal color 13937065.



This preview shows how white text looks on a background with the Decimal color 13937065.

Color Blindness Simulation

Color vision deficiency is a very complex topic, and I could not describe the different causes any better than Wikipedia does, so if you want to learn more, you should check out their [article about color blindness](#).


Dichromacy



Original Color
13937065

Protanopia
12104622

Deuteranopia
13217192



Tritanopia
14002100

Trichromacy



Original Color
13937065

Protanomaly
12758956

Deuteranomaly
13479080

Tritanomaly
14002352

Monochromacy



Original Color
13937065

Achromatopsia
11974326

Achromatomaly
12693937

CSS Examples

Text

The CSS property to change the color of the text to Decimal 13937065 is called "color". The color property can be set on classes, ids or directly on the HTML element.

This example shows how text in the color #D4A9A9 looks like.

```
.text, #text, p{  
    color:#D4A9A9  
}
```

If you want to add a text shadow in that color use the text-shadow property, you can generate a text shadow directly with our [CSS Text Shadow Generator](#).

Here you see how black text with a 4 pixel #D4A9A9 colored shadow looks like.

```
.shadow{ text-shadow: 4px 4px 2px #D4A9A9
}
```

Border

The CSS property to change the border of an element to Decimal 13937065 is called "border". The border property can be set on classes, ids or directly on the HTML element.

This example shows the color as border, it can be applied via the CSS property "border" or "border-color".

```
.border, #border, table{ border:4px solid
#D4A9A9 }
```

If only the border color should be changed use the property `border-color`.

```
.border{ border-color:#D4A9A9 }
```

If you want to add a box shadow in that color use:

Here you see how a box with a 4 pixel #D4A9A9 colored shadow looks like.

```
.boxshadow{ -moz-box-shadow:4px 4px 4px  
4px #D4A9A9; -webkit-box-shadow:4px 4px  
4px 4px #D4A9A9; box-shadow:4px 4px 4px  
4px #D4A9A9 }
```

Background

The CSS property to change the background color of an element to Decimal 13937065 is called "background". The background property can be set on classes, ids or directly on the HTML element.

```
.background, #background, body{  
background:#D4A9A9 }
```

If only the background color should be changed can be used:

```
.background{ background-color:#D4A9A9 }
```

This example shows the color as background, it is applied via the CSS property "background".

To optimize and compress your CSS code, you can use our [online CSS compressor and optimizer](#) based on csstidy. If you want to create a linear or radial gradient as background or border, check our [CSS Gradient Generator](#).

Hey! You found this booklet interesting? Support Converting Colors with the new Membership Option!

The pro membership hides all ads, plus gives you double the colors in the color bucket, and more awesome pro features!

[Learn more, Memberships starting at \\$2.50/m!](#)

**Follow me
on Twitter!**

@ConvertingColor