

Converting Colors

Decimal(13937833)

Have a look what the booklet for
Decimal(13937833) contains.

Decimal(13937833)	3
<i>Conversions</i>	4
<i>Details</i>	6
<i>Harmonies</i>	11
<i>Previews</i>	23
<i>Color Blindness Simulation</i>	26
<i>CSS Examples</i>	29

Color

Decimal(13937833)

Conversions

Conversions Part 1

Format	Color
Hex	D4ACA9
RGB	212, 172, 169
RGB Percent	83%, 67%, 66%
CMY	0.1686, 0.3255, 0.3373
CMYK	0.00, 0.19, 0.20, 0.17
HSL	4°, 33%, 75%
HSV	4°, 20%, 83%
XYZ	49.0653, 46.3667, 43.8998
YIQ	183.6180, 24.8030, 7.5470

Conversions

Conversions Part 2

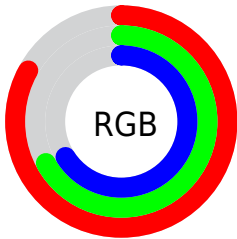
Format	Color
R _Y B	212, 172, 169
Decimal	13937833
CIE Lab	73.78, 14.10, 7.05
CIE LCh	74, 15.764, 26.553
Yxy	46.3667, 0.3521, 0.3328
Android (android.graphics.Color)	4292127913 (0xFFD4ACA9)
YUV	183.6180, -7.2067, 24.8910
Hunter-Lab	68.0931, 9.4576, 9.4408

Details

The Decimal color **13937833** is a light color, and the websafe version is hex **CC9999**. A complement of this color would be **11129300**, and the grayscale version is **12105912**.

A 20% lighter version of the original color is **16770016**, and **10319989** is the 20% darker color. If you saturate the color by 10%, you get **13932692**, and if you desaturate by 10%, it is **13942974**.

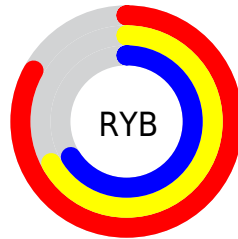
Distribution



Red (83%)

Green (67%)

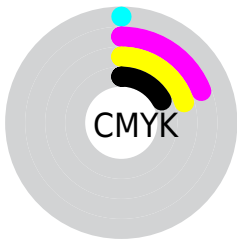
Blue (66%)



Red (83%)

Yellow (67%)

Blue (66%)

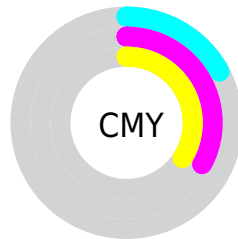


Cyan (0%)

Magenta (19%)

Yellow (20%)

Black (17%)



Cyan (17%)

Magenta (33%)

Yellow (34%)

Brightness & Saturation Gradients

These gradients show how the Decimal color 13937833 changes by changing the brightness by 10 percent. The first figure shows a shift by +10% for each color and the second figure -10%.

Similar to the brightness gradients but the following saturation gradients show a change of the Decimal color 13937833 by changing the saturation by 10% instead.

 13937833

 13937833

16777215

 12095887

 16770016

 10319989

16777213

 8544092

 6899525

 5255215

 3676954

 2359808

 0

 13937833

 13937833

 13932692

 13942974

 13927807

 13947859

 13922665

 13953001

 13917524

 13958142

 13912383

 13959167

 13907498

 13902357

 13897472

Harmonies

Analogous

The Analogous color harmony consists of three colors that are next to each other on the color wheel.



13740984



13937833



13610910

Triad

The Triadic color harmony groups three colors that are evenly spaced from another and form a triangle on the color wheel.



13937833



10665125



10729426

Complementary

The Complementary color scheme is a pair of colors which are on the opposite of each other on the color wheel.



13937833



11129300

Split Complementary

Split-complementary colors differ from the complementary color scheme. The scheme consists of three colors, the original color and two neighbors of the complement color.



9812941



13937833



9813683

Square

The Square scheme is like the rectangle color scheme, but the four colors are evenly spaced on the color wheel.



13937833



11778203



9485762



11973327

Rectangle

The Rectangle color scheme consists of four colors that form a rectangle on the color wheel.



13937833



13087386



9485762



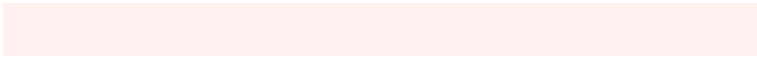
10402257

Sweetspot

The Sweet Spot groups the original color and five complimentary colors.



13937833



16773616



13937105



8419191



0



8421504

Same Dimension

The Same Dimension uses a secret algorithm to generate beautiful new colors.



13937833



16762562



13943209



7037280



11209728



2818816

Inverse Universe

The Inverse Universe completely reimagines the original color for something new.



11129300



12778495



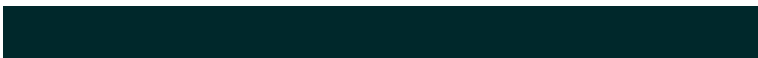
11123924



6318699



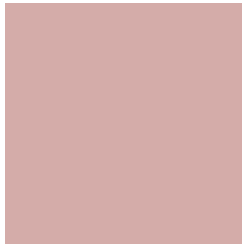
40875



10283

Previews

White Background



This preview shows how the Decimal color 13937833 looks on a white background.

Color Contrast Check

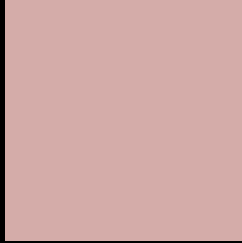
Large Text (above 18pt) WCAG AA × Fail

Any Text WCAG AA × Fail

Large Text (above 18pt) WCAG AAA × Fail

Any Text WCAG AAA × Fail

Black Background



This preview shows how the Decimal color 13937833 looks on a black background.

Color Contrast Check

Large Text (above 18pt) WCAG AA ✓ Pass

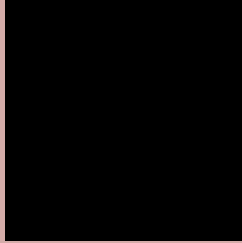
Any Text WCAG AA ✓ Pass

Large Text (above 18pt) WCAG AAA ✓ Pass

Any Text WCAG AAA ✓ Pass

If you want to check with other color combinations, try the [Color Contrast Checker](#).

Decimal 13937833 Background



This preview shows how black text looks on a background with the Decimal color 13937833.



This preview shows how white text looks on a background with the Decimal color 13937833.

Color Blindness Simulation

Color vision deficiency is a very complex topic, and I could not describe the different causes any better than Wikipedia does, so if you want to learn more, you should check out their [article about color blindness](#).

Dichromacy



Original Color
13937833

Protanopia
12301742

Deuteranopia
13414312



Tritanopia
14068407

Trichromacy



Original Color
13937833

Protanomaly
12890796

Deuteranomaly
13610664

Tritanomaly
14003122

Monochromacy



Original Color
13937833

Achromatopsia
12105912

Achromatomaly
12760243

CSS Examples

Text

The CSS property to change the color of the text to Decimal 13937833 is called "color". The color property can be set on classes, ids or directly on the HTML element.

This example shows how text in the color #D4ACA9 looks like.

```
.text, #text, p{  
  color:#D4ACA9  
}
```

If you want to add a text shadow in that color use the text-shadow property, you can generate a text shadow directly with our [CSS Text Shadow Generator](#).

Here you see how black text with a 4 pixel #D4ACA9 colored shadow looks like.

```
.shadow{ text-shadow: 4px 4px 2px #D4ACA9
}
```

Border

The CSS property to change the border of an element to Decimal 13937833 is called "border". The border property can be set on classes, ids or directly on the HTML element.

This example shows the color as border, it can be applied via the CSS property "border" or "border-color".

```
.border, #border, table{ border:4px solid
#D4ACA9 }
```

If only the border color should be changed use the property `border-color`.

```
.border{ border-color:#D4ACA9 }
```

If you want to add a box shadow in that color use:

Here you see how a box with a 4 pixel #D4ACA9 colored shadow looks like.

```
.boxshadow{ -moz-box-shadow:4px 4px 4px  
4px #D4ACA9; -webkit-box-shadow:4px 4px  
4px 4px #D4ACA9; box-shadow:4px 4px 4px  
4px #D4ACA9 }
```

Background

The CSS property to change the background color of an element to Decimal 13937833 is called "background". The background property can be set on classes, ids or directly on the HTML element.

```
.background, #background, body{  
background:#D4ACA9 }
```

If only the background color should be changed can be used:

```
.background{ background-color:#D4ACA9 }
```

This example shows the color as background, it is applied via the CSS property "background".

To optimize and compress your CSS code, you can use our [online CSS compressor and optimizer](#) based on csstidy. If you want to create a linear or radial gradient as background or border, check our [CSS Gradient Generator](#).

Hey! You found this booklet interesting? Support Converting Colors with the new Membership Option!

The pro membership hides all ads, plus gives you double the colors in the color bucket, and more awesome pro features!

[Learn more, Memberships starting at \\$2.50/m!](#)

**Follow me
on Twitter!**

@ConvertingColor