

Converting Colors

Decimal(13938099)

Have a look what the booklet for
Decimal(13938099) contains.

Decimal(13938099)	3
<i>Conversions</i>	4
<i>Details</i>	6
<i>Harmonies</i>	11
<i>Previews</i>	23
<i>Color Blindness Simulation</i>	26
<i>CSS Examples</i>	29

Color

Decimal(13938099)

Conversions

Conversions Part 1

Format	Color
Hex	D4ADB3
RGB	212, 173, 179
RGB Percent	83%, 68%, 70%
CMY	0.1686, 0.3216, 0.2980
CMYK	0.00, 0.18, 0.16, 0.17
HSL	351°, 31%, 75%
HSV	351°, 18%, 83%
XYZ	50.2316, 47.1389, 49.0990
YIQ	185.3450, 21.3180, 10.1340

Conversions

Conversions Part 2

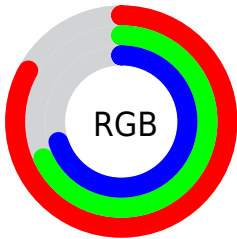
Format	Color
R _Y B	212, 173, 179
Decimal	13938099
CIE Lab	74.28, 15.12, 2.28
CIE LCh	74, 15.290, 8.594
Yxy	47.1389, 0.3429, 0.3218
Android (android.graphics.Color)	4292128179 (0xFFD4ADB3)
YUV	185.3450, -3.1281, 23.3764
Hunter-Lab	68.6577, 10.4438, 5.6605

Details

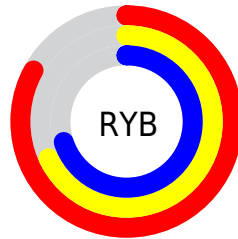
The Decimal color **13938099** is a light color, and the websafe version is hex **CC9999**. A complement of this color would be **11392206**, and the grayscale version is **12171705**.

A 20% lighter version of the original color is **16770539**, and **10320254** is the 20% darker color. If you saturate the color by 10%, you get **13932705**, and if you desaturate by 10%, it is **13943493**.

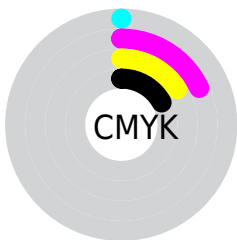
Distribution



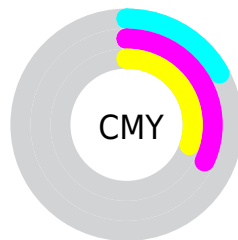
- Red (83%)
- Green (68%)
- Blue (70%)



- Red (83%)
- Yellow (68%)
- Blue (70%)



- Cyan (0%)
- Magenta (18%)
- Yellow (16%)
- Black (17%)



- Cyan (17%)
- Magenta (32%)
- Yellow (30%)

Brightness & Saturation Gradients

These gradients show how the Decimal color 13938099 changes by changing the brightness by 10 percent. The first figure shows a shift by +10% for each color and the second figure -10%.

Similar to the brightness gradients but the following saturation gradients show a change of the Decimal color 13938099 by changing the saturation by 10% instead.

 13938099

 13938099

16777215

 12096152

 16770539

 10320254

 8609893

 6899789

 5255479

 3742753

 2360331

 0

 13938099

 13938099

 13932705

 13943493

 13927311

 13948887

 13921661

 13954537

 13916267

 13959163

 13910873

 13959167

 13905479

 13900085

 13894435

 13893665

Harmonies

Analogous

The Analogous color harmony consists of three colors that are next to each other on the color wheel.



13479617



13938099



13873062

Triad

The Triadic color harmony groups three colors that are evenly spaced from another and form a triangle on the color wheel.



13938099



11451296



10271696

Complementary

The Complementary color scheme is a pair of colors which are on the opposite of each other on the color wheel.



13938099



11392206

Split Complementary

Split-complementary colors differ from the complementary color scheme. The scheme consists of three colors, the original color and two neighbors of the complement color.



9682632



13938099



10469036

Square

The Square scheme is like the rectangle color scheme, but the four colors are evenly spaced on the color wheel.



13938099



12498843



9748410



11318994

Rectangle

The Rectangle color scheme consists of four colors that form a rectangle on the color wheel.



13938099



13611423



9748410



10009806

Sweetspot

The Sweet Spot groups the original color and five complimentary colors.



13938099



16773362



13544916



8419192



0



8421504

Same Dimension

The Same Dimension uses a secret algorithm to generate beautiful new colors.



13938099



16762832



13941421



7037026



11206682



2818055

Inverse Universe

The Inverse Universe completely reimagines the original color for something new.



13938099



16762832



11388884



7037026



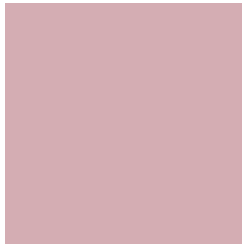
11206682



2818055

Previews

White Background



This preview shows how the Decimal color 13938099 looks on a white background.

Color Contrast Check

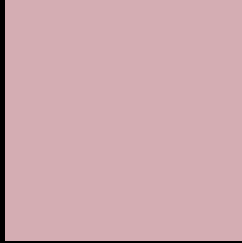
Large Text (above 18pt) WCAG AA × Fail

Any Text WCAG AA × Fail

Large Text (above 18pt) WCAG AAA × Fail

Any Text WCAG AAA × Fail

Black Background



This preview shows how the Decimal color 13938099 looks on a black background.

Color Contrast Check

Large Text (above 18pt) WCAG AA ✓ Pass

Any Text WCAG AA ✓ Pass

Large Text (above 18pt) WCAG AAA ✓ Pass

Any Text WCAG AAA ✓ Pass

If you want to check with other color combinations, try the [Color Contrast Checker](#).

Decimal 13938099 Background



This preview shows how black text looks on a background with the Decimal color 13938099.




This preview shows how white text looks on a background with the Decimal color 13938099.

Color Blindness Simulation

Color vision deficiency is a very complex topic, and I could not describe the different causes any better than Wikipedia does, so if you want to learn more, you should check out their [article about color blindness](#).

Dichromacy





Tritanopia
14003385

Trichromacy



Original Color
13938099

Protanomaly
12825526

Deuteranomaly
13545650

Tritanomaly
14003383

Monochromacy



Original Color
13938099

Achromatopsia
12171705

Achromatomaly
12826039

CSS Examples

Text

The CSS property to change the color of the text to Decimal 13938099 is called "color". The color property can be set on classes, ids or directly on the HTML element.

This example shows how text in the color #D4ADB3 looks like.

```
.text, #text, p{  
  color:#D4ADB3  
}
```

If you want to add a text shadow in that color use the text-shadow property, you can generate a text shadow directly with our [CSS Text Shadow Generator](#).

Here you see how black text with a 4 pixel #D4ADB3 colored shadow looks like.

```
.shadow{ text-shadow: 4px 4px 2px #D4ADB3  
}
```

Border

The CSS property to change the border of an element to Decimal 13938099 is called "border". The border property can be set on classes, ids or directly on the HTML element.

This example shows the color as border, it can be applied via the CSS property "border" or "border-color".

```
.border, #border, table{ border:4px solid  
#D4ADB3 }
```

If only the border color should be changed use the property `border-color`.

```
.border{ border-color:#D4ADB3 }
```

If you want to add a box shadow in that color use:

Here you see how a box with a 4 pixel #D4ADB3 colored shadow looks like.

```
.boxshadow{ -moz-box-shadow:4px 4px 4px  
4px #D4ADB3; -webkit-box-shadow:4px 4px  
4px 4px #D4ADB3; box-shadow:4px 4px 4px  
4px #D4ADB3 }
```

Background

The CSS property to change the background color of an element to Decimal 13938099 is called "background". The background property can be set on classes, ids or directly on the HTML element.

```
.background, #background, body{  
background:#D4ADB3 }
```

If only the background color should be changed can be used:

```
.background{ background-color:#D4ADB3 }
```

This example shows the color as background, it is applied via the CSS property "background".

To optimize and compress your CSS code, you can use our [online CSS compressor and optimizer](#) based on csstidy. If you want to create a linear or radial gradient as background or border, check our [CSS Gradient Generator](#).

Hey! You found this booklet interesting? Support Converting Colors with the new Membership Option!

The pro membership hides all ads, plus gives you double the colors in the color bucket, and more awesome pro features!

[Learn more, Memberships starting at \\$2.50/m!](#)

**Follow me
on Twitter!**

@ConvertingColor