

# Converting Colors

Decimal(13938602)

Have a look what the booklet for  
Decimal(13938602) contains.

<b>Decimal(13938602)</b> .....	3
<i><b>Conversions</b></i> .....	4
<i><b>Details</b></i> .....	6
<i><b>Harmonies</b></i> .....	11
<i><b>Previews</b></i> .....	23
<i><b>Color Blindness Simulation</b></i> .....	26
<i><b>CSS Examples</b></i> .....	29

# **Color**

**Decimal(13938602)**

# Conversions

## Conversions Part 1

Format	Color
Hex	D4AFAA
RGB	212, 175, 170
RGB Percent	83%, 69%, 67%
CMY	0.1686, 0.3137, 0.3333
CMYK	0.00, 0.17, 0.20, 0.17
HSL	7°, 33%, 75%
HSV	7°, 20%, 83%
XYZ	49.7370, 47.5593, 44.5886
YIQ	185.4930, 23.6570, 6.2890

# Conversions

## Conversions Part 2

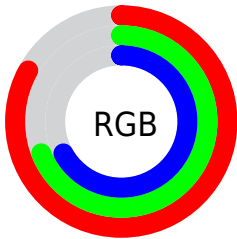
Format	Color
<a href="#">RYB</a>	<a href="#">212, 176, 170</a>
Decimal	<a href="#">13938602</a>
CIELab	<a href="#">74.55, 12.63, 7.59</a>
CIELCh	<a href="#">75, 14.740, 31.010</a>
Yxy	<a href="#">47.5593, 0.3505, 0.3352</a>
Android (android.graphics.Color)	<a href="#">4292128682</a> ( <a href="#">0xFFD4AFAA</a> )
YUV	<a href="#">185.4930, -7.6380, 23.2466</a>
Hunter-Lab	<a href="#">68.9632, 8.0505, 9.9399</a>

# Details

The Decimal color **13938602** is a light color, and the websafe version is hex **CC9999**. A complement of this color would be **11194324**, and the grayscale version is **12237498**.

A 20% lighter version of the original color is **16771041**, and **10320502** is the 20% darker color. If you saturate the color by 10%, you get **13933717**, and if you desaturate by 10%, it is **13943487**.

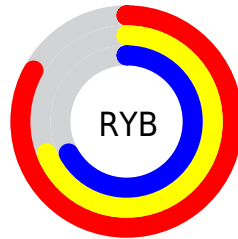
# Distribution



Red (83%)

Green (69%)

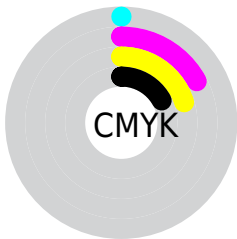
Blue (67%)



Red (83%)

Yellow (69%)

Blue (67%)

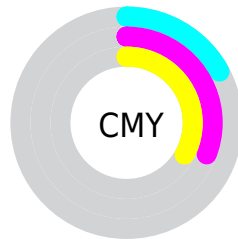


Cyan (0%)

Magenta (17%)

Yellow (20%)

Black (17%)



Cyan (17%)

Magenta (31%)

Yellow (33%)

# Brightness & Saturation Gradients

These gradients show how the Decimal color 13938602 changes by changing the brightness by 10 percent. The first figure shows a shift by +10% for each color and the second figure -10%.

Similar to the brightness gradients but the following saturation gradients show a change of the Decimal color 13938602 by changing the saturation by 10% instead.



 13938602

 13938602

16777215

 12096656

 16771041

 10320502

16777214

 8544861

 6900294

 5255983

 3677723

 2360832

 0

 13938602

 13938602

 13933717

 13943487

 13929088

 13948116

 13924202

 13953002

 13919317

 13957887

 13914688

 13959167

 13909803

 13904918

 13900288

 13900032

# Harmonies

## Analogous

The Analogous color harmony consists of three colors that are next to each other on the color wheel.



13872823



13938602



13546144

# Triad

The Triadic color harmony groups three colors that are evenly spaced from another and form a triangle on the color wheel.



13938602



10796714



11122898

# Complementary

The Complementary color scheme is a pair of colors which are on the opposite of each other on the color wheel.



13938602



11194324

# Split Complementary

Split-complementary colors differ from the complementary color scheme. The scheme consists of three colors, the original color and two neighbors of the complement color.



10206415



13938602



10010551

# Square

The Square scheme is like the rectangle color scheme, but the four colors are evenly spaced on the color wheel.



13938602



11778976



9813957



12301519

# Rectangle

The Rectangle color scheme consists of four colors that form a rectangle on the color wheel.



13938602



13022621



9813957



10795730

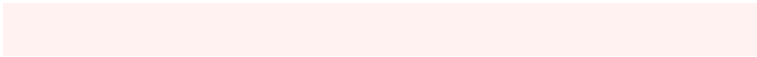


# Sweetspot

The Sweet Spot groups the original color and five complimentary colors.



13938602



16773872



13937359



8419447



0



8421504



# Same Dimension

The Same Dimension uses a secret algorithm to generate beautiful new colors.



13938602



16763330



13943978



7037536



11211776



2819328



# Inverse Universe

The Inverse Universe completely reimagines the original color for something new.



11194324



12777727



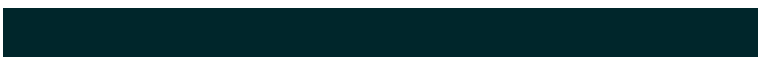
11188948



6318699



38827



9771



# Previews

## White Background



This preview shows how the Decimal color 13938602 looks on a white background.

## Color Contrast Check

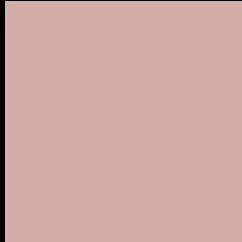
Large Text (above 18pt) WCAG AA × Fail

Any Text WCAG AA × Fail

Large Text (above 18pt) WCAG AAA × Fail

Any Text WCAG AAA × Fail

# Black Background



This preview shows how the Decimal color 13938602 looks on a black background.

## Color Contrast Check

Large Text (above 18pt) WCAG AA ✓ Pass

Any Text WCAG AA ✓ Pass

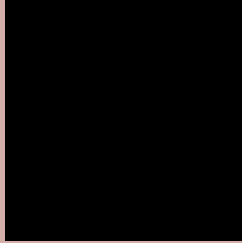
Large Text (above 18pt) WCAG AAA ✓ Pass

Any Text WCAG AAA ✓ Pass

If you want to check with other color combinations, try the [Color Contrast Checker](#).



## Decimal 13938602 Background



This preview shows how black text looks on a background with the Decimal color 13938602.



This preview shows how white text looks on a background with the Decimal color 13938602.

# Color Blindness Simulation

Color vision deficiency is a very complex topic, and I could not describe the different causes any better than Wikipedia does, so if you want to learn more, you should check out their [article about color blindness](#).

## Dichromacy





**Tritanopia**  
14069178

# Trichromacy



**Original Color**  
13938602

**Protanomaly**  
12956845

**Deuteranomaly**  
13742250

**Tritanomaly**  
14003892

# Monochromacy



**Original Color**  
13938602

**Achromatopsia**  
12171705

**Achromatomaly**  
12826036

# CSS Examples

## Text

The CSS property to change the color of the text to Decimal 13938602 is called "color". The color property can be set on classes, ids or directly on the HTML element.

This example shows how text in the color #D4AFAA looks like.

```
.text, #text, p{  
    color:#D4AFAA  
}
```

If you want to add a text shadow in that color use the text-shadow property, you can generate a text shadow directly with our [CSS Text Shadow Generator](#).

Here you see how black text with a 4 pixel #D4AFAA colored shadow looks like.

```
.shadow{ text-shadow: 4px 4px 2px #D4AFAA
}
```

## Border

The CSS property to change the border of an element to Decimal 13938602 is called "border". The border property can be set on classes, ids or directly on the HTML element.

This example shows the color as border, it can be applied via the CSS property "border" or "border-color".

```
.border, #border, table{ border:4px solid
#D4AFAA }
```

If only the border color should be changed use the property `border-color`.

```
.border{ border-color:#D4AFAA }
```

If you want to add a box shadow in that color use:

Here you see how a box with a 4 pixel #D4AFAA colored shadow looks like.

```
.boxshadow{ -moz-box-shadow:4px 4px 4px  
4px #D4AFAA; -webkit-box-shadow:4px 4px  
4px 4px #D4AFAA; box-shadow:4px 4px 4px  
4px #D4AFAA }
```

# Background

The CSS property to change the background color of an element to Decimal 13938602 is called "background". The background property can be set on classes, ids or directly on the HTML element.

```
.background, #background, body{  
background:#D4AFAA }
```

If only the background color should be changed can be used:

```
.background{ background-color:#D4AFAA }
```

This example shows the color as background, it is applied via the CSS property "background".

To optimize and compress your CSS code, you can use our [online CSS compressor and optimizer](#) based on csstidy. If you want to create a linear or radial gradient as background or border, check our [CSS Gradient Generator](#).



Hey! You found this booklet interesting? Support Converting Colors with the new Membership Option!

The pro membership hides all ads, plus gives you double the colors in the color bucket, and more awesome pro features!

**[Learn more, Memberships starting at \\$2.50/m!](#)**

**Follow me  
on Twitter!**

@ConvertingColor