

Converting Colors

Decimal(13938866)

Have a look what the booklet for
Decimal(13938866) contains.

Decimal(13938866)	3
<i>Conversions</i>	4
<i>Details</i>	6
<i>Harmonies</i>	11
<i>Previews</i>	23
<i>Color Blindness Simulation</i>	26
<i>CSS Examples</i>	29

Color

Decimal(13938866)

Conversions

Conversions Part 1

Format	Color
Hex	D4B0B2
RGB	212, 176, 178
RGB Percent	83%, 69%, 70%
CMY	0.1686, 0.3098, 0.3020
CMYK	0.00, 0.17, 0.16, 0.17
HSL	357°, 30%, 76%
HSV	357°, 17%, 83%
XYZ	50.7126, 48.2621, 48.7621
YIQ	186.9920, 20.8140, 8.2540

Conversions

Conversions Part 2

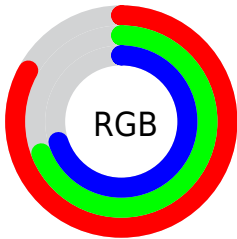
Format	Color
RYB	212, 176, 178
Decimal	13938866
CIELab	74.99, 13.34, 3.86
CIELCh	75, 13.886, 16.152
Yxy	48.2621, 0.3433, 0.3267
Android (android.graphics.Color)	4292128946 (0xFFD4B0B2)
YUV	186.9920, -4.4331, 21.9320
Hunter-Lab	69.4709, 8.7279, 7.0135

Details

The Decimal color **13938866** is a light color, and the websafe version is hex **CC9999**. A complement of this color would be **11588818**, and the grayscale version is **12303291**.

A 20% lighter version of the original color is **16771306**, and **10320765** is the 20% darker color. If you saturate the color by 10%, you get **13933470**, and if you desaturate by 10%, it is **13944262**.

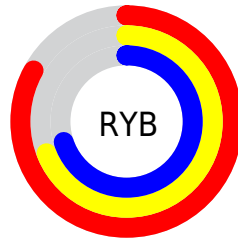
Distribution



Red (83%)

Green (69%)

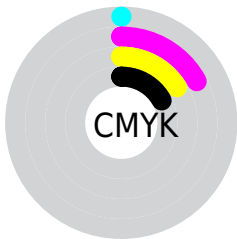
Blue (70%)



Red (83%)

Yellow (69%)

Blue (70%)

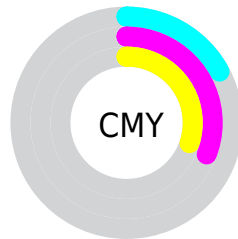


Cyan (0%)

Magenta (17%)

Yellow (16%)

Black (17%)



Cyan (17%)

Magenta (31%)

Yellow (30%)

Brightness & Saturation Gradients

These gradients show how the Decimal color 13938866 changes by changing the brightness by 10 percent. The first figure shows a shift by +10% for each color and the second figure -10%.

Similar to the brightness gradients but the following saturation gradients show a change of the Decimal color 13938866 by changing the saturation by 10% instead.

 13938866

 13938866

16777215

 12096919

 16771306

 10320765

 8610405

 6900301

 5256246

 3743265

 2361097

 0

 13938866

 13938866

 13933470

 13944262

 13928074

 13949658

 13922422

 13955310

 13917026

 13959167

 13911630

 13906234

 13900838

 13895186

 13893644

Harmonies

Analogous

The Analogous color harmony consists of three colors that are next to each other on the color wheel.



13611199



13938866



13808295

Triad

The Triadic color harmony groups three colors that are evenly spaced from another and form a triangle on the color wheel.



13938866



11386535



10796241

Complementary

The Complementary color scheme is a pair of colors which are on the opposite of each other on the color wheel.



13938866



11588818

Split Complementary

Split-complementary colors differ from the complementary color scheme. The scheme consists of three colors, the original color and two neighbors of the complement color.



10141643



13938866



10535090

Square

The Square scheme is like the rectangle color scheme, but the four colors are evenly spaced on the color wheel.



13938866



12368544



10010815



11843537

Rectangle

The Rectangle color scheme consists of four colors that form a rectangle on the color wheel.



13938866



13415586



10010815



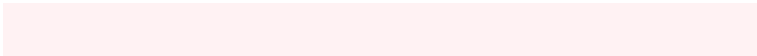
10534352

Sweetspot

The Sweet Spot groups the original color and five complimentary colors.



13938866



16773875



13807828



8419448



0



8421504

Same Dimension

The Same Dimension uses a secret algorithm to generate beautiful new colors.



13938866



16764111



13942960



7037025



11206665



2818050

Inverse Universe

The Inverse Universe completely reimagines the original color for something new.



13938866



16764111



11584724



7037025



11206665



2818050

Previews

White Background



This preview shows how the Decimal color 13938866 looks on a white background.

Color Contrast Check

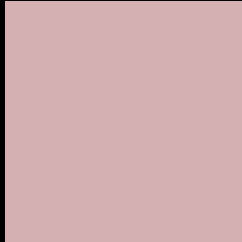
Large Text (above 18pt) WCAG AA × Fail

Any Text WCAG AA × Fail

Large Text (above 18pt) WCAG AAA × Fail

Any Text WCAG AAA × Fail

Black Background



This preview shows how the Decimal color 13938866 looks on a black background.

Color Contrast Check

Large Text (above 18pt) WCAG AA ✓ Pass

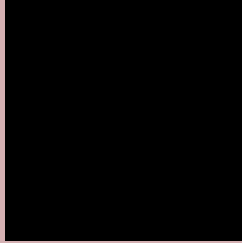
Any Text WCAG AA ✓ Pass

Large Text (above 18pt) WCAG AAA ✓ Pass

Any Text WCAG AAA ✓ Pass

If you want to check with other color combinations, try the [Color Contrast Checker](#).

Decimal 13938866 Background



This preview shows how black text looks on a background with the Decimal color 13938866.



This preview shows how white text looks on a background with the Decimal color 13938866.

Color Blindness Simulation

Color vision deficiency is a very complex topic, and I could not describe the different causes any better than Wikipedia does, so if you want to learn more, you should check out their [article about color blindness](#).

Dichromacy





Tritanopia
14003900

Trichromacy



Original Color

13938866

Protanomaly

12957109

Deuteranomaly

13677234

Tritanomaly

14004152

Monochromacy



Original Color

13938866

Achromatopsia

12303291

Achromatomaly

12892088

CSS Examples

Text

The CSS property to change the color of the text to Decimal 13938866 is called "color". The color property can be set on classes, ids or directly on the HTML element.

This example shows how text in the color #D4B0B2 looks like.

```
.text, #text, p{  
    color:#D4B0B2  
}
```

If you want to add a text shadow in that color use the text-shadow property, you can generate a text shadow directly with our [CSS Text Shadow Generator](#).

Here you see how black text with a 4 pixel #D4B0B2 colored shadow looks like.

```
.shadow{ text-shadow: 4px 4px 2px #D4B0B2
}
```

Border

The CSS property to change the border of an element to Decimal 13938866 is called "border". The border property can be set on classes, ids or directly on the HTML element.

This example shows the color as border, it can be applied via the CSS property "border" or "border-color".

```
.border, #border, table{ border:4px solid
#D4B0B2 }
```

If only the border color should be changed use the property border-color.

```
.border{ border-color:#D4B0B2 }
```

If you want to add a box shadow in that color use:

Here you see how a box with a 4 pixel #D4B0B2 colored shadow looks like.

```
.boxshadow{ -moz-box-shadow:4px 4px 4px  
4px #D4B0B2; -webkit-box-shadow:4px 4px  
4px 4px #D4B0B2; box-shadow:4px 4px 4px  
4px #D4B0B2 }
```

Background

The CSS property to change the background color of an element to Decimal 13938866 is called "background". The background property can be set on classes, ids or directly on the HTML element.

```
.background, #background, body{  
background:#D4B0B2 }
```

If only the background color should be changed can be used:

```
.background{ background-color:#D4B0B2 }
```

This example shows the color as background, it is applied via the CSS property "background".

To optimize and compress your CSS code, you can use our [online CSS compressor and optimizer](#) based on csstidy. If you want to create a linear or radial gradient as background or border, check our [CSS Gradient Generator](#).

Hey! You found this booklet interesting? Support Converting Colors with the new Membership Option!

The pro membership hides all ads, plus gives you double the colors in the color bucket, and more awesome pro features!

[Learn more, Memberships starting at \\$2.50/m!](#)

**Follow me
on Twitter!**

@ConvertingColor