

Converting Colors

Decimal(13939345)

Have a look what the booklet for
Decimal(13939345) contains.

Decimal(13939345)	3
<i>Conversions</i>	4
<i>Details</i>	6
<i>Harmonies</i>	11
<i>Previews</i>	23
<i>Color Blindness Simulation</i>	26
<i>CSS Examples</i>	29

Color

Decimal(13939345)

Conversions

Conversions Part 1

Format	Color
Hex	D4B291
RGB	212, 178, 145
RGB Percent	83%, 70%, 57%
CMY	0.1686, 0.3020, 0.4314
CMYK	0.00, 0.16, 0.32, 0.17
HSL	30°, 44%, 70%
HSV	30°, 32%, 83%
XYZ	48.1826, 47.8822, 33.4907
YIQ	184.4040, 30.8570, -3.0550

Conversions

Conversions Part 2

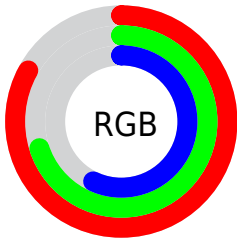
Format	Color
R _Y B	212, 210, 145
Decimal	13939345
CIE Lab	74.75, 7.51, 21.46
CIE LCh	75, 22.737, 70.712
Yxy	47.8822, 0.3719, 0.3696
Android (android.graphics.Color)	4292129425 (0xFFD4B291)
YUV	184.4040, -19.4262, 24.2017
Hunter-Lab	69.1969, 3.1969, 19.7420

Details

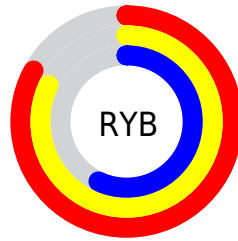
The Decimal color **13939345** is a light color, and the websafe version is hex **FFCC99**. A complement of this color would be **9548756**, and the grayscale version is **12171705**.

A 20% lighter version of the original color is **16771783**, and **10255710** is the 20% darker color. If you saturate the color by 10%, you get **13936508**, and if you desaturate by 10%, it is **13942182**.

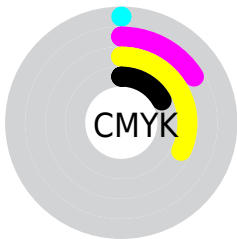
Distribution



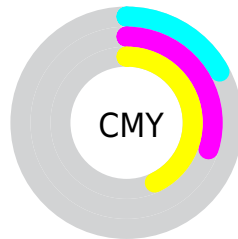
- Red (83%)
- Green (70%)
- Blue (57%)



- Red (83%)
- Yellow (82%)
- Blue (57%)



- Cyan (0%)
- Magenta (16%)
- Yellow (32%)
- Black (17%)



- Cyan (17%)
- Magenta (30%)
- Yellow (43%)

Brightness & Saturation Gradients

These gradients show how the Decimal color 13939345 changes by changing the brightness by 10 percent. The first figure shows a shift by +10% for each color and the second figure -10%.

Similar to the brightness gradients but the following saturation gradients show a change of the Decimal color 13939345 by changing the saturation by 10% instead.

 13939345

 13939345

16777215

 12097399

 16771783

 10255710

 16777187

 8545350

 6835504

 5125658

 3612673

 2034432

 0

 13939345

 13939345

 13936508

 13942182

 13933671

 13945019

 13931089

 13947601

 13928252

 13950438

 13925415

 13953275

 13922578

 13956095

 13920256

 13958655

 13959167

Harmonies

Analogous

The Analogous color harmony consists of three colors that are next to each other on the color wheel.



14789790



13939345



12630415

Triad

The Triadic color harmony groups three colors that are evenly spaced from another and form a triangle on the color wheel.



13939345



8504511



12955864

Complementary

The Complementary color scheme is a pair of colors which are on the opposite of each other on the color wheel.



13939345



9548756

Split Complementary

Split-complementary colors differ from the complementary color scheme. The scheme consists of three colors, the original color and two neighbors of the complement color.



11122657



13939345



8372946

Square

The Square scheme is like the rectangle color scheme, but the four colors are evenly spaced on the color wheel.



13939345



9552809



9420511



14265286

Rectangle

The Rectangle color scheme consists of four colors that form a rectangle on the color wheel.



13939345



11648404



9420511



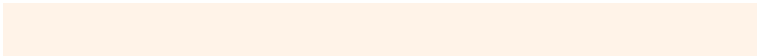
12366556

Sweetspot

The Sweet Spot groups the original color and five complimentary colors.



13939345



16774120



13930932



8419441



0



8421504

Same Dimension

The Same Dimension uses a secret algorithm to generate beautiful new colors.



13939345



16764574



13947793



7038560



11228160



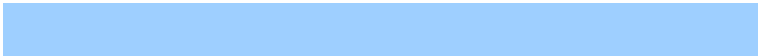
2823424

Inverse Universe

The Inverse Universe completely reimagines the original color for something new.



9548756



10407935



9540308



6317675



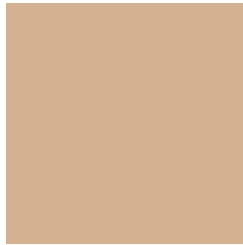
22443



5675

Previews

White Background



This preview shows how the Decimal color 13939345 looks on a white background.

Color Contrast Check

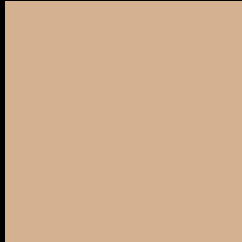
Large Text (above 18pt) WCAG AA × Fail

Any Text WCAG AA × Fail

Large Text (above 18pt) WCAG AAA × Fail

Any Text WCAG AAA × Fail

Black Background



This preview shows how the Decimal color 13939345 looks on a black background.

Color Contrast Check

Large Text (above 18pt) WCAG AA ✓ Pass

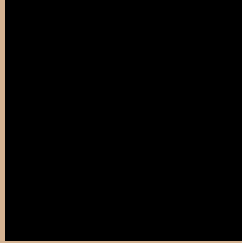
Any Text WCAG AA ✓ Pass

Large Text (above 18pt) WCAG AAA ✓ Pass

Any Text WCAG AAA ✓ Pass

If you want to check with other color combinations, try the [Color Contrast Checker](#).

Decimal 13939345 Background



This preview shows how black text looks on a background with the Decimal color 13939345.



This preview shows how white text looks on a background with the Decimal color 13939345.

Color Blindness Simulation

Color vision deficiency is a very complex topic, and I could not describe the different causes any better than Wikipedia does, so if you want to learn more, you should check out their [article about color blindness](#).


Dichromacy



Original Color
13939345

Protanopia
12826772

Deuteranopia
14135697



Tritanopia
14265530

Trichromacy



Original Color
13939345

Protanomaly
13219475

Deuteranomaly
14070161

Tritanomaly
14134955

Monochromacy



Original Color
13939345

Achromatopsia
12105912

Achromatomaly
12760746

CSS Examples

Text

The CSS property to change the color of the text to Decimal 13939345 is called "color". The color property can be set on classes, ids or directly on the HTML element.

This example shows how text in the color #D4B291 looks like.

```
.text, #text, p{  
    color:#D4B291  
}
```

If you want to add a text shadow in that color use the text-shadow property, you can generate a text shadow directly with our [CSS Text Shadow Generator](#).

Here you see how black text with a 4 pixel #D4B291 colored shadow looks like.

```
.shadow{ text-shadow: 4px 4px 2px #D4B291
}
```

Border

The CSS property to change the border of an element to Decimal 13939345 is called "border". The border property can be set on classes, ids or directly on the HTML element.

This example shows the color as border, it can be applied via the CSS property "border" or "border-color".

```
.border, #border, table{ border:4px solid
#D4B291 }
```

If only the border color should be changed use the property `border-color`.

```
.border{ border-color:#D4B291 }
```

If you want to add a box shadow in that color use:

Here you see how a box with a 4 pixel #D4B291 colored shadow looks like.

```
.boxshadow{ -moz-box-shadow:4px 4px 4px  
4px #D4B291; -webkit-box-shadow:4px 4px  
4px 4px #D4B291; box-shadow:4px 4px 4px  
4px #D4B291 }
```

Background

The CSS property to change the background color of an element to Decimal 13939345 is called "background". The background property can be set on classes, ids or directly on the HTML element.

```
.background, #background, body{  
background:#D4B291 }
```

If only the background color should be changed can be used:

```
.background{ background-color:#D4B291 }
```

This example shows the color as background, it is applied via the CSS property "background".

To optimize and compress your CSS code, you can use our [online CSS compressor and optimizer](#) based on csstidy. If you want to create a linear or radial gradient as background or border, check our [CSS Gradient Generator](#).

Hey! You found this booklet interesting? Support Converting Colors with the new Membership Option!

The pro membership hides all ads, plus gives you double the colors in the color bucket, and more awesome pro features!

[Learn more, Memberships starting at \\$2.50/m!](#)

**Follow me
on Twitter!**

@ConvertingColor