

Converting Colors

Decimal(13940668)

Have a look what the booklet for
Decimal(13940668) contains.

Decimal(13940668)	3
<i>Conversions</i>	4
<i>Details</i>	6
<i>Harmonies</i>	11
<i>Previews</i>	23
<i>Color Blindness Simulation</i>	26
<i>CSS Examples</i>	29

Color

Decimal(13940668)

Conversions

Conversions Part 1

Format	Color
Hex	D4B7BC
RGB	212, 183, 188
RGB Percent	83%, 72%, 74%
CMY	0.1686, 0.2824, 0.2627
CMYK	0.00, 0.14, 0.11, 0.17
HSL	350°, 25%, 77%
HSV	350°, 14%, 83%
XYZ	53.1620, 51.4949, 54.7145
YIQ	192.2410, 15.6790, 7.7030

Conversions

Conversions Part 2

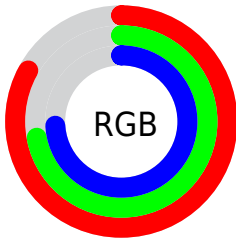
Format	Color
R _Y B	212, 183, 188
Decimal	13940668
CIE Lab	76.98, 11.20, 1.30
CIE LCh	77, 11.271, 6.631
Yxy	51.4949, 0.3336, 0.3231
Android (android.graphics.Color)	4292130748 (0xFFD4B7BC)
YUV	192.2410, -2.0908, 17.3286
Hunter-Lab	71.7599, 6.6585, 5.0253

Details

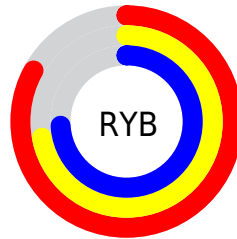
The Decimal color **13940668** is a light color, and the websafe version is hex **CCCCCC**. A complement of this color would be **12047567**, and the grayscale version is **12632256**.

A 20% lighter version of the original color is **16773108**, and **10322567** is the 20% darker color. If you saturate the color by 10%, you get **13935274**, and if you desaturate by 10%, it is **13946062**.

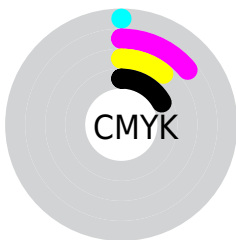
Distribution



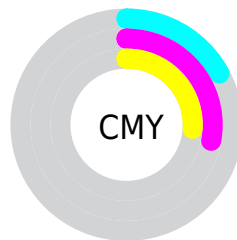
- Red (83%)
- Green (72%)
- Blue (74%)



- Red (83%)
- Yellow (72%)
- Blue (74%)



- Cyan (0%)
- Magenta (14%)
- Yellow (11%)
- Black (17%)



- Cyan (17%)
- Magenta (28%)
- Yellow (26%)

Brightness & Saturation Gradients

These gradients show how the Decimal color 13940668 changes by changing the brightness by 10 percent. The first figure shows a shift by +10% for each color and the second figure -10%.

Similar to the brightness gradients but the following saturation gradients show a change of the Decimal color 13940668 by changing the saturation by 10% instead.

■ 13940668

■ 13940668

16777215

■ 12098721

■ 16773108

■ 10322567

■ 8612206

■ 6967637

■ 5323326

■ 3810344

■ 2363156

■ 0

■ 13940668

■ 13940668

 13935274

 13946062

 13929881

 13951455

 13924231

 13957105

 13918838

 13959167

 13913444

 13908051

 13902657

 13897008

 13893669

Harmonies

Analogous

The Analogous color harmony consists of three colors that are next to each other on the color wheel.



13547719



13940668



13940914

Triad

The Triadic color harmony groups three colors that are evenly spaced from another and form a triangle on the color wheel.



13940668



12108205



11256273

Complementary

The Complementary color scheme is a pair of colors which are on the opposite of each other on the color wheel.



13940668



12047567

Split Complementary

Split-complementary colors differ from the complementary color scheme. The scheme consists of three colors, the original color and two neighbors of the complement color.



10798282



13940668



11388085

Square

The Square scheme is like the rectangle color scheme, but the four colors are evenly spaced on the color wheel.



13940668



12893865



10929344



11976403

Rectangle

The Rectangle color scheme consists of four colors that form a rectangle on the color wheel.



13940668



13744813



10929344



11059919

Sweetspot

The Sweet Spot groups the original color and five complimentary colors.



13940668



16774647



13613012



8419706



0



8421504

Same Dimension

The Same Dimension uses a secret algorithm to generate beautiful new colors.



13940668



16766685



13942967



7037026



11206685



2818055

Inverse Universe

The Inverse Universe completely reimagines the original color for something new.



13940668



16766685



12045268



7037026



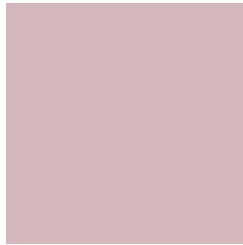
11206685



2818055

Previews

White Background



This preview shows how the Decimal color 13940668 looks on a white background.

Color Contrast Check

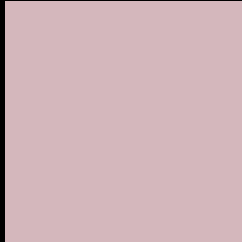
Large Text (above 18pt) WCAG AA × Fail

Any Text WCAG AA × Fail

Large Text (above 18pt) WCAG AAA × Fail

Any Text WCAG AAA × Fail

Black Background



This preview shows how the Decimal color 13940668 looks on a black background.

Color Contrast Check

Large Text (above 18pt) WCAG AA ✓ Pass

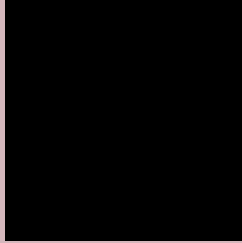
Any Text WCAG AA ✓ Pass

Large Text (above 18pt) WCAG AAA ✓ Pass

Any Text WCAG AAA ✓ Pass

If you want to check with other color combinations, try the [Color Contrast Checker](#).

Decimal 13940668 Background



This preview shows how black text looks on a background with the Decimal color 13940668.



This preview shows how white text looks on a background with the Decimal color 13940668.

Color Blindness Simulation

Color vision deficiency is a very complex topic, and I could not describe the different causes any better than Wikipedia does, so if you want to learn more, you should check out their [article about color blindness](#).

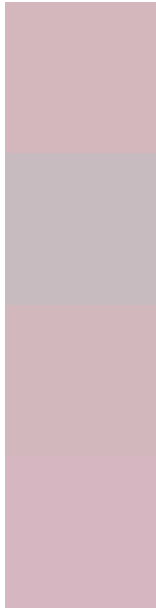
Dichromacy





Tritanopia
14005956

Trichromacy



Original Color
13940668

Protanomaly
13155263

Deuteranomaly
13809852

Tritanomaly
14005953

Monochromacy



Original Color
13940668

Achromatopsia
12632256

Achromatomaly
13090239

CSS Examples

Text

The CSS property to change the color of the text to Decimal 13940668 is called "color". The color property can be set on classes, ids or directly on the HTML element.

This example shows how text in the color #D4B7BC looks like.

```
.text, #text, p{  
  color:#D4B7BC  
}
```

If you want to add a text shadow in that color use the text-shadow property, you can generate a text shadow directly with our [CSS Text Shadow Generator](#).

Here you see how black text with a 4 pixel #D4B7BC colored shadow looks like.

```
.shadow{ text-shadow: 4px 4px 2px #D4B7BC  
}
```

Border

The CSS property to change the border of an element to Decimal 13940668 is called "border". The border property can be set on classes, ids or directly on the HTML element.

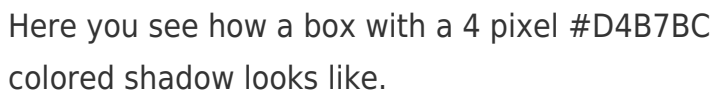
This example shows the color as border, it can be applied via the CSS property "border" or "border-color".

```
.border, #border, table{ border:4px solid  
#D4B7BC }
```

If only the border color should be changed use the property `border-color`.

```
.border{ border-color:#D4B7BC }
```

If you want to add a box shadow in that color use:



Here you see how a box with a 4 pixel #D4B7BC colored shadow looks like.

```
.boxshadow{ -moz-box-shadow:4px 4px 4px  
4px #D4B7BC; -webkit-box-shadow:4px 4px  
4px 4px #D4B7BC; box-shadow:4px 4px 4px  
4px #D4B7BC }
```

Background

The CSS property to change the background color of an element to Decimal 13940668 is called "background". The background property can be set on classes, ids or directly on the HTML element.

```
.background, #background, body{  
background:#D4B7BC }
```

If only the background color should be changed can be used:

```
.background{ background-color:#D4B7BC }
```

This example shows the color as background, it is applied via the CSS property "background".

To optimize and compress your CSS code, you can use our [online CSS compressor and optimizer](#) based on csstidy. If you want to create a linear or radial gradient as background or border, check our [CSS Gradient Generator](#).

Hey! You found this booklet interesting? Support Converting Colors with the new Membership Option!

The pro membership hides all ads, plus gives you double the colors in the color bucket, and more awesome pro features!

[Learn more, Memberships starting at \\$2.50/m!](#)

**Follow me
on Twitter!**

@ConvertingColor