

# Converting Colors

Decimal(13940919)

Have a look what the booklet for  
Decimal(13940919) contains.

<b>Decimal(13940919)</b> .....	3
<i><b>Conversions</b></i> .....	4
<i><b>Details</b></i> .....	6
<i><b>Harmonies</b></i> .....	11
<i><b>Previews</b></i> .....	23
<i><b>Color Blindness Simulation</b></i> .....	26
<i><b>CSS Examples</b></i> .....	29

# **Color**

**Decimal(13940919)**

# Conversions

## Conversions Part 1

Format	Color
Hex	D4B8B7
RGB	212, 184, 183
RGB Percent	83%, 72%, 72%
CMY	0.1686, 0.2784, 0.2824
CMYK	0.00, 0.13, 0.14, 0.17
HSL	2°, 25%, 77%
HSV	2°, 14%, 83%
XYZ	52.8391, 51.6969, 51.9933
YIQ	192.2580, 17.0090, 5.6250

# Conversions

## Conversions Part 2

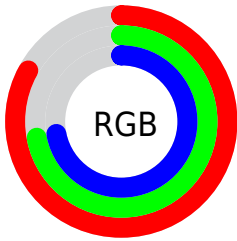
Format	Color
R <sub>Y</sub> B	212, 184, 183
Decimal	13940919
CIE Lab	77.10, 9.84, 4.19
CIE LCh	77, 10.693, 23.081
Yxy	51.6969, 0.3376, 0.3303
Android (android.graphics.Color)	4292130999 (0xFFD4B8B7)
YUV	192.2580, -4.5642, 17.3137
Hunter-Lab	71.9006, 5.3521, 7.4561

# Details

The Decimal color **13940919** is a light color, and the websafe version is hex **CCCCCC**. A complement of this color would be **12047316**, and the grayscale version is **12632256**.

A 20% lighter version of the original color is **16773359**, and **10322818** is the 20% darker color. If you saturate the color by 10%, you get **13935778**, and if you desaturate by 10%, it is **13946060**.

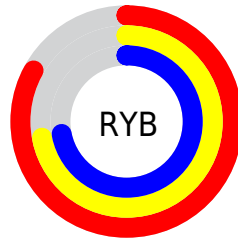
# Distribution



Red (83%)

Green (72%)

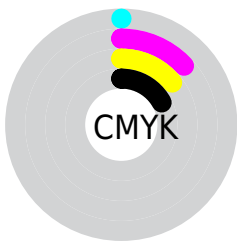
Blue (72%)



Red (83%)

Yellow (72%)

Blue (72%)

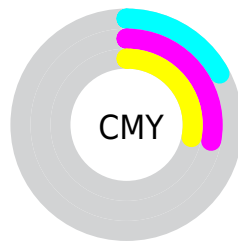


Cyan (0%)

Magenta (13%)

Yellow (14%)

Black (17%)



Cyan (17%)

Magenta (28%)

Yellow (28%)

# Brightness & Saturation Gradients

These gradients show how the Decimal color 13940919 changes by changing the brightness by 10 percent. The first figure shows a shift by +10% for each color and the second figure -10%.

Similar to the brightness gradients but the following saturation gradients show a change of the Decimal color 13940919 by changing the saturation by 10% instead.



 13940919

 13940919

16777215

 12098972

 16773359

 10322818

 8612457

 6902353

 5323322

 3810596

 2363407

 0

 13940919

 13940919

 13935778

 13946060

 13930381

 13951457

 13925239

 13956599

 13919842

 13959167

 13914701

 13909304

 13904163

 13898765

 13895424

# Harmonies

## Analogous

The Analogous color harmony consists of three colors that are next to each other on the color wheel.



13744321



13940919



13744815

# Triad

The Triadic color harmony groups three colors that are evenly spaced from another and form a triangle on the color wheel.



13940919



11781042



11649234

# Complementary

The Complementary color scheme is a pair of colors which are on the opposite of each other on the color wheel.



13940919



12047316

# Split Complementary

Split-complementary colors differ from the complementary color scheme. The scheme consists of three colors, the original color and two neighbors of the complement color.



11125710



13940919



11191484

# Square

The Square scheme is like the rectangle color scheme, but the four colors are evenly spaced on the color wheel.



13940919



12501164



10929350



12500432

# Rectangle

The Rectangle color scheme consists of four colors that form a rectangle on the color wheel.



13940919



13417644



10929350



11452881



# Sweetspot

The Sweet Spot groups the original color and five complimentary colors.



13940919



16774645



13940691



8419705



0



8421504



# Same Dimension

The Same Dimension uses a secret algorithm to generate beautiful new colors.



13940919



16767190



13944503



7037280



11208192



2818304

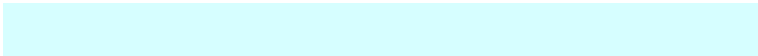


# Inverse Universe

The Inverse Universe completely reimagines the original color for something new.



12047316



14089983



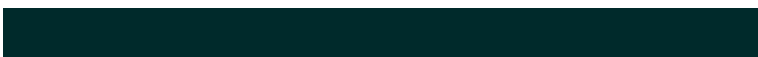
12043732



6318955



42411

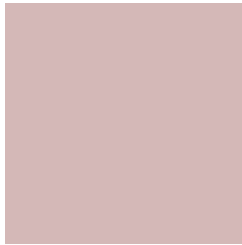


10795



# Previews

## White Background



This preview shows how the Decimal color 13940919 looks on a white background.

## Color Contrast Check

Large Text (above 18pt) WCAG AA × Fail

Any Text WCAG AA × Fail

Large Text (above 18pt) WCAG AAA × Fail

Any Text WCAG AAA × Fail

# Black Background



This preview shows how the Decimal color 13940919 looks on a black background.

## Color Contrast Check

Large Text (above 18pt) WCAG AA ✓ Pass

Any Text WCAG AA ✓ Pass

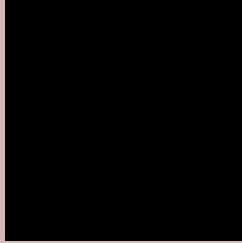
Large Text (above 18pt) WCAG AAA ✓ Pass

Any Text WCAG AAA ✓ Pass

If you want to check with other color combinations, try the [Color Contrast Checker](#).



## Decimal 13940919 Background



This preview shows how black text looks on a background with the Decimal color 13940919.



This preview shows how white text looks on a background with the Decimal color 13940919.

# Color Blindness Simulation

Color vision deficiency is a very complex topic, and I could not describe the different causes any better than Wikipedia does, so if you want to learn more, you should check out their [article about color blindness](#).

## Dichromacy





**Tritanopia**  
14071492

# Trichromacy



**Original Color**  
13940919

**Protanomaly**  
13221049

**Deuteranomaly**  
13940919

**Tritanomaly**  
14006207

# Monochromacy



**Original Color**  
13940919

**Achromatopsia**  
12632256

**Achromatomaly**  
13090237

# CSS Examples

## Text

The CSS property to change the color of the text to Decimal 13940919 is called "color". The color property can be set on classes, ids or directly on the HTML element.

This example shows how text in the color #D4B8B7 looks like.

```
.text, #text, p{  
  color:#D4B8B7  
}
```

If you want to add a text shadow in that color use the text-shadow property, you can generate a text shadow directly with our [CSS Text Shadow Generator](#).

Here you see how black text with a 4 pixel #D4B8B7 colored shadow looks like.

```
.shadow{ text-shadow: 4px 4px 2px #D4B8B7  
}
```

## Border

The CSS property to change the border of an element to Decimal 13940919 is called "border". The border property can be set on classes, ids or directly on the HTML element.

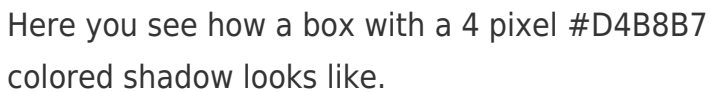
This example shows the color as border, it can be applied via the CSS property "border" or "border-color".

```
.border, #border, table{ border:4px solid  
#D4B8B7 }
```

If only the border color should be changed use the property `border-color`.

```
.border{ border-color:#D4B8B7 }
```

If you want to add a box shadow in that color use:



Here you see how a box with a 4 pixel #D4B8B7 colored shadow looks like.

```
.boxshadow{ -moz-box-shadow:4px 4px 4px  
4px #D4B8B7; -webkit-box-shadow:4px 4px  
4px 4px #D4B8B7; box-shadow:4px 4px 4px  
4px #D4B8B7 }
```

# Background

The CSS property to change the background color of an element to Decimal 13940919 is called "background". The background property can be set on classes, ids or directly on the HTML element.

```
.background, #background, body{  
background:#D4B8B7 }
```

If only the background color should be changed can be used:

```
.background{ background-color:#D4B8B7 }
```

This example shows the color as background, it is applied via the CSS property "background".

To optimize and compress your CSS code, you can use our [online CSS compressor and optimizer](#) based on csstidy. If you want to create a linear or radial gradient as background or border, check our [CSS Gradient Generator](#).



Hey! You found this booklet interesting? Support Converting Colors with the new Membership Option!

The pro membership hides all ads, plus gives you double the colors in the color bucket, and more awesome pro features!

**[Learn more, Memberships starting at \\$2.50/m!](#)**

**Follow me  
on Twitter!**

@ConvertingColor