

Converting Colors

Decimal(13941435)

Have a look what the booklet for
Decimal(13941435) contains.

Decimal(13941435)	3
<i>Conversions</i>	4
<i>Details</i>	6
<i>Harmonies</i>	11
<i>Previews</i>	23
<i>Color Blindness Simulation</i>	26
<i>CSS Examples</i>	29

Color

Decimal(13941435)

Conversions

Conversions Part 1

Format	Color
Hex	D4BABB
RGB	212, 186, 187
RGB Percent	83%, 73%, 73%
CMY	0.1686, 0.2706, 0.2667
CMYK	0.00, 0.12, 0.12, 0.17
HSL	358°, 23%, 78%
HSV	358°, 12%, 83%
XYZ	53.6799, 52.7027, 54.3571
YIQ	193.8880, 15.1750, 5.8230

Conversions

Conversions Part 2

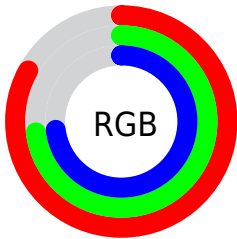
Format	Color
R _Y B	212, 186, 187
Decimal	13941435
CIE Lab	77.70, 9.42, 2.89
CIE LCh	78, 9.854, 17.067
Yxy	52.7027, 0.3340, 0.3279
Android (android.graphics.Color)	4292131515 (0xFFD4BABB)
YUV	193.8880, -3.3958, 15.8842
Hunter-Lab	72.5966, 4.9436, 6.4239

Details

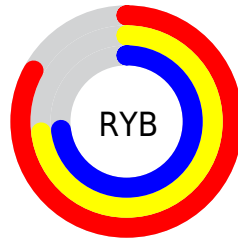
The Decimal color **13941435** is a light color, and the websafe version is hex **CCCCCC**. A complement of this color would be **12244179**, and the grayscale version is **12763842**.

A 20% lighter version of the original color is **16773875**, and **10323334** is the 20% darker color. If you saturate the color by 10%, you get **13936039**, and if you desaturate by 10%, it is **13946831**.

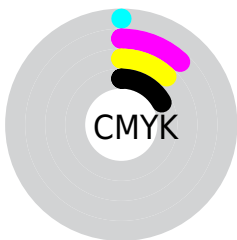
Distribution



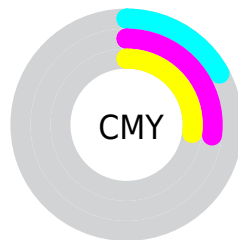
- Red (83%)
- Green (73%)
- Blue (73%)



- Red (83%)
- Yellow (73%)
- Blue (73%)



- Cyan (0%)
- Magenta (12%)
- Yellow (12%)
- Black (17%)



- Cyan (17%)
- Magenta (27%)
- Yellow (27%)

Brightness & Saturation Gradients

These gradients show how the Decimal color 13941435 changes by changing the brightness by 10 percent. The first figure shows a shift by +10% for each color and the second figure -10%.

Similar to the brightness gradients but the following saturation gradients show a change of the Decimal color 13941435 by changing the saturation by 10% instead.

 13941435

 13941435

16777215

 12099488

 16773875

 10323334

 8612973

 6968148

 5323837

 3810856

 2363923

 0

 13941435

 13941435

 13936039

 13946831

 13930642

 13952228

 13924990

 13957880

 13919593

 13959167

 13914197

 13908801

 13903404

 13897752

 13893640

Harmonies

Analogous

The Analogous color harmony consists of three colors that are next to each other on the color wheel.



13679300



13941435



13810611

Triad

The Triadic color harmony groups three colors that are evenly spaced from another and form a triangle on the color wheel.



13941435



12043443



11715282

Complementary

The Complementary color scheme is a pair of colors which are on the opposite of each other on the color wheel.



13941435



12244179

Split Complementary

Split-complementary colors differ from the complementary color scheme. The scheme consists of three colors, the original color and two neighbors of the complement color.



11257037



13941435



11453884

Square

The Square scheme is like the rectangle color scheme, but the four colors are evenly spaced on the color wheel.



13941435



12763567



11192005



12435409

Rectangle

The Rectangle color scheme consists of four colors that form a rectangle on the color wheel.



13941435



13548975



11192005



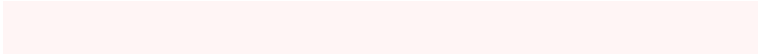
11518929

Sweetspot

The Sweet Spot groups the original color and five complimentary colors.



13941435



16774645



13875924



8419705



0



8421504

Same Dimension

The Same Dimension uses a secret algorithm to generate beautiful new colors.



13941435



16767450



13944506



7037025



11206663



2818050

Inverse Universe

The Inverse Universe completely reimagines the original color for something new.



13941435



16767450



12241108



7037025



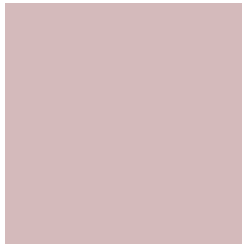
11206663



2818050

Previews

White Background



This preview shows how the Decimal color 13941435 looks on a white background.

Color Contrast Check

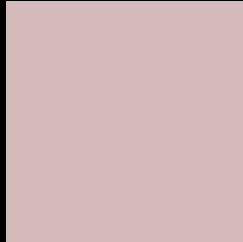
Large Text (above 18pt) WCAG AA × Fail

Any Text WCAG AA × Fail

Large Text (above 18pt) WCAG AAA × Fail

Any Text WCAG AAA × Fail

Black Background



This preview shows how the Decimal color 13941435 looks on a black background.

Color Contrast Check

Large Text (above 18pt) WCAG AA ✓ Pass

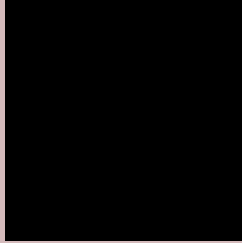
Any Text WCAG AA ✓ Pass

Large Text (above 18pt) WCAG AAA ✓ Pass

Any Text WCAG AAA ✓ Pass

If you want to check with other color combinations, try the [Color Contrast Checker](#).

Decimal 13941435 Background



This preview shows how black text looks on a background with the Decimal color 13941435.



This preview shows how white text looks on a background with the Decimal color 13941435.

Color Blindness Simulation

Color vision deficiency is a very complex topic, and I could not describe the different causes any better than Wikipedia does, so if you want to learn more, you should check out their [article about color blindness](#).

Dichromacy



Original Color
13941435

Protanopia
12894142

Deuteranopia
14006971



Tritanopia
14072007

Trichromacy



Original Color
13941435

Protanomaly
13286845

Deuteranomaly
14006971

Tritanomaly
14006723

Monochromacy



Original Color
13941435

Achromatopsia
12763842

Achromatomaly
13221823

CSS Examples

Text

The CSS property to change the color of the text to Decimal 13941435 is called "color". The color property can be set on classes, ids or directly on the HTML element.

This example shows how text in the color #D4BABB looks like.

```
.text, #text, p{  
    color:#D4BABB  
}
```

If you want to add a text shadow in that color use the text-shadow property, you can generate a text shadow directly with our [CSS Text Shadow Generator](#).

Here you see how black text with a 4 pixel #D4BABB colored shadow looks like.

```
.shadow{ text-shadow: 4px 4px 2px #D4BABB } }
```

Border

The CSS property to change the border of an element to Decimal 13941435 is called "border". The border property can be set on classes, ids or directly on the HTML element.

This example shows the color as border, it can be applied via the CSS property "border" or "border-color".

```
.border, #border, table{ border:4px solid #D4BABB } }
```

If only the border color should be changed use the property `border-color`.

```
.border{ border-color:#D4BABB }
```

If you want to add a box shadow in that color use:

Here you see how a box with a 4 pixel #D4BABB colored shadow looks like.

```
.boxshadow{ -moz-box-shadow:4px 4px 4px  
4px #D4BABB; -webkit-box-shadow:4px 4px  
4px 4px #D4BABB; box-shadow:4px 4px 4px  
4px #D4BABB }
```

Background

The CSS property to change the background color of an element to Decimal 13941435 is called "background". The background property can be set on classes, ids or directly on the HTML element.

```
.background, #background, body{  
background:#D4BABB }
```

If only the background color should be changed can be used:

```
.background{ background-color:#D4BABB }
```

This example shows the color as background, it is applied via the CSS property "background".

To optimize and compress your CSS code, you can use our [online CSS compressor and optimizer](#) based on csstidy. If you want to create a linear or radial gradient as background or border, check our [CSS Gradient Generator](#).

Hey! You found this booklet interesting? Support Converting Colors with the new Membership Option!

The pro membership hides all ads, plus gives you double the colors in the color bucket, and more awesome pro features!

[Learn more, Memberships starting at \\$2.50/m!](#)

**Follow me
on Twitter!**

@ConvertingColor