

Converting Colors

Decimal(13941929)

Have a look what the booklet for
Decimal(13941929) contains.

Decimal(13941929)	3
<i>Conversions</i>	4
<i>Details</i>	6
<i>Harmonies</i>	11
<i>Previews</i>	23
<i>Color Blindness Simulation</i>	26
<i>CSS Examples</i>	29

Color

Decimal(13941929)

Conversions

Conversions Part 1

Format	Color
Hex	D4BCA9
RGB	212, 188, 169
RGB Percent	83%, 74%, 66%
CMY	0.1686, 0.2627, 0.3373
CMYK	0.00, 0.11, 0.20, 0.17
HSL	27°, 33%, 75%
HSV	27°, 20%, 83%
XYZ	52.2960, 52.8281, 44.9767
YIQ	193.0100, 20.4030, -0.8210

Conversions

Conversions Part 2

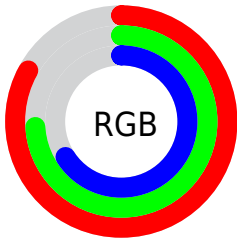
Format	Color
R _Y B	212, 203, 169
Decimal	13941929
CIE Lab	77.77, 5.52, 12.73
CIE LCh	78, 13.873, 66.564
Yxy	52.8281, 0.3484, 0.3520
Android (android.graphics.Color)	4292132009 (0xFFD4BCA9)
YUV	193.0100, -11.8369, 16.6542
Hunter-Lab	72.6829, 1.2373, 14.1890

Details

The Decimal color **13941929** is a light color, and the websafe version is hex **CCCCCC**. A complement of this color would be **11125204**, and the grayscale version is **12698049**.

A 20% lighter version of the original color is **16774368**, and **10323829** is the 20% darker color. If you saturate the color by 10%, you get **13938836**, and if you desaturate by 10%, it is **13945022**.

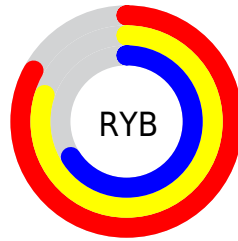
Distribution



Red (83%)

Green (74%)

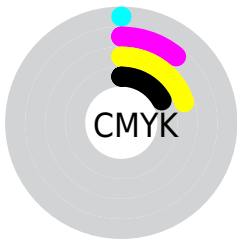
Blue (66%)



Red (83%)

Yellow (80%)

Blue (66%)

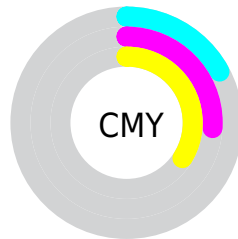


Cyan (0%)

Magenta (11%)

Yellow (20%)

Black (17%)



Cyan (17%)

Magenta (26%)

Yellow (34%)

Brightness & Saturation Gradients

These gradients show how the Decimal color 13941929 changes by changing the brightness by 10 percent. The first figure shows a shift by +10% for each color and the second figure -10%.

Similar to the brightness gradients but the following saturation gradients show a change of the Decimal color 13941929 by changing the saturation by 10% instead.

 13941929

 13941929

16777215

 12099983

 16774368

 10323829

16777213

 8613468

 6903109

 5258798

 3745817

 2364416

 0

 13941929

 13941929

 13938836

 13945022

 13935743

 13948115

 13932905

 13950953

 13929812

 13954046

 13926719

 13957119

 13923626

 13959167

 13920533

 13917696

Harmonies

Analogous

The Analogous color harmony consists of three colors that are next to each other on the color wheel.



14399921



13941929



13156519

Triad

The Triadic color harmony groups three colors that are evenly spaced from another and form a triangle on the color wheel.



13941929



10668227



13024469

Complementary

The Complementary color scheme is a pair of colors which are on the opposite of each other on the color wheel.



13941929



11125204

Split Complementary

Split-complementary colors differ from the complementary color scheme. The scheme consists of three colors, the original color and two neighbors of the complement color.



11976922



13941929



10536911

Square

The Square scheme is like the rectangle color scheme, but the four colors are evenly spaced on the color wheel.



13941929



11257782



11060439



13941195

Rectangle

The Rectangle color scheme consists of four colors that form a rectangle on the color wheel.



13941929



12501929



11060439



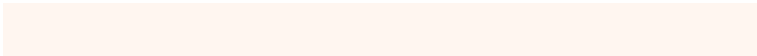
12697047

Sweetspot

The Sweet Spot groups the original color and five complimentary colors.



13941929



16774896



13937089



8420215



0



8421504

Same Dimension

The Same Dimension uses a secret algorithm to generate beautiful new colors.



13941929



16768450



13947305



7038304



11225856



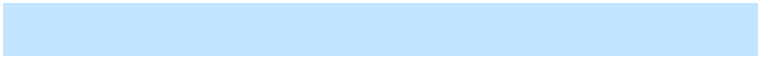
2822912

Inverse Universe

The Inverse Universe completely reimagines the original color for something new.



11125204



12772607



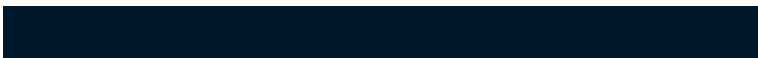
11119828



6317675



24491



6187

Previews

White Background



This preview shows how the Decimal color 13941929 looks on a white background.

Color Contrast Check

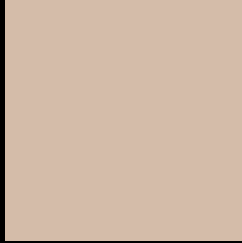
Large Text (above 18pt) WCAG AA × Fail

Any Text WCAG AA × Fail

Large Text (above 18pt) WCAG AAA × Fail

Any Text WCAG AAA × Fail

Black Background



This preview shows how the Decimal color 13941929 looks on a black background.

Color Contrast Check

Large Text (above 18pt) WCAG AA ✓ Pass

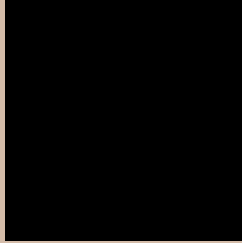
Any Text WCAG AA ✓ Pass

Large Text (above 18pt) WCAG AAA ✓ Pass

Any Text WCAG AAA ✓ Pass

If you want to check with other color combinations, try the [Color Contrast Checker](#).

Decimal 13941929 Background



This preview shows how black text looks on a background with the Decimal color 13941929.



This preview shows how white text looks on a background with the Decimal color 13941929.

Color Blindness Simulation

Color vision deficiency is a very complex topic, and I could not describe the different causes any better than Wikipedia does, so if you want to learn more, you should check out their [article about color blindness](#).

Dichromacy



Original Color
13941929

Protanopia
13222059

Deuteranopia
14399914



Tritanopia
14203078

Trichromacy



Original Color
13941929

Protanomaly
13483946

Deuteranomaly
14203562

Tritanomaly
14137787

Monochromacy



Original Color
13941929

Achromatopsia
12698049

Achromatomaly
13156280

CSS Examples

Text

The CSS property to change the color of the text to Decimal 13941929 is called "color". The color property can be set on classes, ids or directly on the HTML element.

This example shows how text in the color #D4BCA9 looks like.

```
.text, #text, p{  
    color:#D4BCA9  
}
```

If you want to add a text shadow in that color use the text-shadow property, you can generate a text shadow directly with our [CSS Text Shadow Generator](#).

Here you see how black text with a 4 pixel #D4BCA9 colored shadow looks like.

```
.shadow{ text-shadow: 4px 4px 2px #D4BCA9
}
```

Border

The CSS property to change the border of an element to Decimal 13941929 is called "border". The border property can be set on classes, ids or directly on the HTML element.

This example shows the color as border, it can be applied via the CSS property "border" or "border-color".

```
.border, #border, table{ border:4px solid
#D4BCA9 }
```

If only the border color should be changed use the property `border-color`.

```
.border{ border-color:#D4BCA9 }
```

If you want to add a box shadow in that color use:

Here you see how a box with a 4 pixel #D4BCA9 colored shadow looks like.

```
.boxshadow{ -moz-box-shadow:4px 4px 4px  
4px #D4BCA9; -webkit-box-shadow:4px 4px  
4px 4px #D4BCA9; box-shadow:4px 4px 4px  
4px #D4BCA9 }
```

Background

The CSS property to change the background color of an element to Decimal 13941929 is called "background". The background property can be set on classes, ids or directly on the HTML element.

```
.background, #background, body{  
background:#D4BCA9 }
```

If only the background color should be changed can be used:

```
.background{ background-color:#D4BCA9 }
```

This example shows the color as background, it is applied via the CSS property "background".

To optimize and compress your CSS code, you can use our [online CSS compressor and optimizer](#) based on csstidy. If you want to create a linear or radial gradient as background or border, check our [CSS Gradient Generator](#).

Hey! You found this booklet interesting? Support Converting Colors with the new Membership Option!

The pro membership hides all ads, plus gives you double the colors in the color bucket, and more awesome pro features!

[Learn more, Memberships starting at \\$2.50/m!](#)

**Follow me
on Twitter!**

@ConvertingColor