

# Converting Colors

Decimal(13942451)

Have a look what the booklet for  
Decimal(13942451) contains.

<b>Decimal(13942451)</b> .....	3
<i><b>Conversions</b></i> .....	4
<i><b>Details</b></i> .....	6
<i><b>Harmonies</b></i> .....	11
<i><b>Previews</b></i> .....	23
<i><b>Color Blindness Simulation</b></i> .....	26
<i><b>CSS Examples</b></i> .....	29

# **Color**

**Decimal(13942451)**

# Conversions

## Conversions Part 1

<b>Format</b>	<b>Color</b>
Hex	D4BEB3
RGB	212, 190, 179
RGB Percent	83%, 75%, 70%
CMY	0.1686, 0.2549, 0.2980
CMYK	0.00, 0.10, 0.16, 0.17
HSL	20°, 28%, 77%
HSV	20°, 16%, 83%
XYZ	53.7015, 54.0786, 50.2557
YIQ	195.3240, 16.6430, 1.2430

# Conversions

## Conversions Part 2

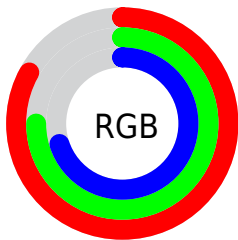
Format	Color
R <sub>Y</sub> B	212, 196, 179
Decimal	13942451
CIE Lab	78.51, 5.99, 8.38
CIE LCh	79, 10.302, 54.442
Yxy	54.0786, 0.3398, 0.3422
Android (android.graphics.Color)	4292132531 (0xFFD4BEB3)
YUV	195.3240, -8.0477, 14.6249
Hunter-Lab	73.5382, 1.6585, 10.9582

# Details

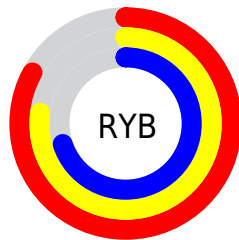
The Decimal color **13942451** is a light color, and the websafe version is hex **CCCCCC**. A complement of this color would be **11782612**, and the grayscale version is **12829635**.

A 20% lighter version of the original color is **16774891**, and **10324350** is the 20% darker color. If you saturate the color by 10%, you get **13938846**, and if you desaturate by 10%, it is **13946056**.

# Distribution



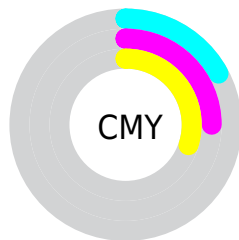
- Red (83%)
- Green (75%)
- Blue (70%)



- Red (83%)
- Yellow (77%)
- Blue (70%)



- Cyan (0%)
- Magenta (10%)
- Yellow (16%)
- Black (17%)



- Cyan (17%)
- Magenta (25%)
- Yellow (30%)

# Brightness & Saturation Gradients

These gradients show how the Decimal color 13942451 changes by changing the brightness by 10 percent. The first figure shows a shift by +10% for each color and the second figure -10%.

Similar to the brightness gradients but the following saturation gradients show a change of the Decimal color 13942451 by changing the saturation by 10% instead.



■ 13942451

■ 13942451

16777215

■ 12100504

■ 16774891

■ 10324350

■ 8613733

■ 6903629

■ 5324855

■ 3811873

■ 2364683

■ 0

■ 13942451

■ 13942451

 13938846

 13946056

 13935241

 13949661

 13931635

 13953267

 13927774

 13957119

 13924169

 13959167

 13920564

 13916959

 13913353

 13911808

# Harmonies

## Analogous

The Analogous color harmony consists of three colors that are next to each other on the color wheel.



14138555



13942451



13418927

# Triad

The Triadic color harmony groups three colors that are evenly spaced from another and form a triangle on the color wheel.



13942451



11454656



12763348

# Complementary

The Complementary color scheme is a pair of colors which are on the opposite of each other on the color wheel.



13942451



11782612

# Split Complementary

Split-complementary colors differ from the complementary color scheme. The scheme consists of three colors, the original color and two neighbors of the complement color.



11977941



13942451



11258058

# Square

The Square scheme is like the rectangle color scheme, but the four colors are evenly spaced on the color wheel.



13942451



12044215



11454161



13483725

# Rectangle

The Rectangle color scheme consists of four colors that form a rectangle on the color wheel.



13942451



12960688



11454161



12501461



# Sweetspot

The Sweet Spot groups the original color and five complimentary colors.



13942451



16775154



13939657



8419960



0



8421504



# Same Dimension

The Same Dimension uses a secret algorithm to generate beautiful new colors.



13942451



16768975



13946803



7038048



11221248



2821632

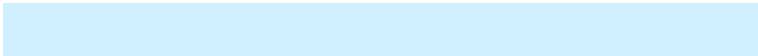


# Inverse Universe

The Inverse Universe completely reimagines the original color for something new.



11782612



13627391



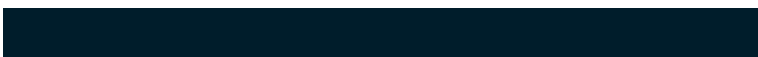
11778516



6318187



29355



7467



# Previews

## White Background



This preview shows how the Decimal color 13942451 looks on a white background.

## Color Contrast Check

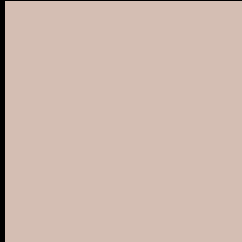
Large Text (above 18pt) WCAG AA × Fail

Any Text WCAG AA × Fail

Large Text (above 18pt) WCAG AAA × Fail

Any Text WCAG AAA × Fail

# Black Background



This preview shows how the Decimal color 13942451 looks on a black background.

## Color Contrast Check

Large Text (above 18pt) WCAG AA ✓ Pass

Any Text WCAG AA ✓ Pass

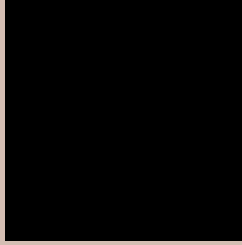
Large Text (above 18pt) WCAG AAA ✓ Pass

Any Text WCAG AAA ✓ Pass

If you want to check with other color combinations, try the [Color Contrast Checker](#).



## Decimal 13942451 Background



This preview shows how black text looks on a background with the Decimal color 13942451.



This preview shows how white text looks on a background with the Decimal color 13942451.

# Color Blindness Simulation

Color vision deficiency is a very complex topic, and I could not describe the different causes any better than Wikipedia does, so if you want to learn more, you should check out their [article about color blindness](#).

## Dichromacy





**Tritanopia**  
14138313

# Trichromacy



**Original Color**  
13942451

**Protanomaly**  
13484468

**Deuteranomaly**  
14204339

**Tritanomaly**  
14073025

# Monochromacy



**Original Color**  
13942451

**Achromatopsia**  
12829635

**Achromatomaly**  
13222333

# CSS Examples

## Text

The CSS property to change the color of the text to Decimal 13942451 is called "color". The color property can be set on classes, ids or directly on the HTML element.

This example shows how text in the color #D4BEB3 looks like.

```
.text, #text, p{  
    color:#D4BEB3  
}
```

If you want to add a text shadow in that color use the text-shadow property, you can generate a text shadow directly with our [CSS Text Shadow Generator](#).

Here you see how black text with a 4 pixel #D4BEB3 colored shadow looks like.

```
.shadow{ text-shadow: 4px 4px 2px #D4BEB3
}
```

## Border

The CSS property to change the border of an element to Decimal 13942451 is called "border". The border property can be set on classes, ids or directly on the HTML element.

This example shows the color as border, it can be applied via the CSS property "border" or "border-color".

```
.border, #border, table{ border:4px solid
#D4BEB3 }
```

If only the border color should be changed use the property `border-color`.

```
.border{ border-color:#D4BEB3 }
```

If you want to add a box shadow in that color use:

Here you see how a box with a 4 pixel #D4BEB3 colored shadow looks like.

```
.boxshadow{ -moz-box-shadow:4px 4px 4px  
4px #D4BEB3; -webkit-box-shadow:4px 4px  
4px 4px #D4BEB3; box-shadow:4px 4px 4px  
4px #D4BEB3 }
```

# Background

The CSS property to change the background color of an element to Decimal 13942451 is called "background". The background property can be set on classes, ids or directly on the HTML element.

```
.background, #background, body{  
background:#D4BEB3 }
```

If only the background color should be changed can be used:

```
.background{ background-color:#D4BEB3 }
```

This example shows the color as background, it is applied via the CSS property "background".

To optimize and compress your CSS code, you can use our [online CSS compressor and optimizer](#) based on csstidy. If you want to create a linear or radial gradient as background or border, check our [CSS Gradient Generator](#).



Hey! You found this booklet interesting? Support Converting Colors with the new Membership Option!

The pro membership hides all ads, plus gives you double the colors in the color bucket, and more awesome pro features!

**[Learn more, Memberships starting at \\$2.50/m!](#)**

**Follow me  
on Twitter!**

@ConvertingColor