

# Converting Colors

Decimal(13942462)

Have a look what the booklet for  
Decimal(13942462) contains.

<b>Decimal(13942462)</b> .....	3
<i><b>Conversions</b></i> .....	4
<i><b>Details</b></i> .....	6
<i><b>Harmonies</b></i> .....	11
<i><b>Previews</b></i> .....	23
<i><b>Color Blindness Simulation</b></i> .....	26
<i><b>CSS Examples</b></i> .....	29

# **Color**

**Decimal(13942462)**

# Conversions

## Conversions Part 1

Format	Color
Hex	D4BEBE
RGB	212, 190, 190
RGB Percent	83%, 75%, 75%
CMY	0.1686, 0.2549, 0.2549
CMYK	0.00, 0.10, 0.10, 0.17
HSL	0°, 20%, 79%
HSV	0°, 10%, 83%
XYZ	54.8591, 54.5417, 56.3514
YIQ	196.5780, 13.1120, 4.6640

# Conversions

## Conversions Part 2

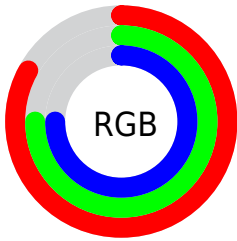
Format	Color
R <sub>Y</sub> B	212, 190, 190
Decimal	13942462
CIE Lab	78.78, 7.78, 2.83
CIE LCh	79, 8.280, 20.005
Yxy	54.5417, 0.3310, 0.3291
Android (android.graphics.Color)	4292132542 (0xFFD4BEBE)
YUV	196.5780, -3.2430, 13.5251
Hunter-Lab	73.8523, 3.3521, 6.4567

# Details

The Decimal color **13942462** is a light color, and the websafe version is hex **CCCCCC**. A complement of this color would be **12506324**, and the grayscale version is **12961221**.

A 20% lighter version of the original color is **16774902**, and **10324361** is the 20% darker color. If you saturate the color by 10%, you get **13937065**, and if you desaturate by 10%, it is **13947859**.

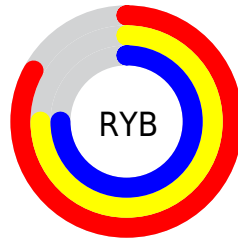
# Distribution



Red (83%)

Green (75%)

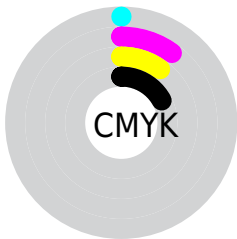
Blue (75%)



Red (83%)

Yellow (75%)

Blue (75%)

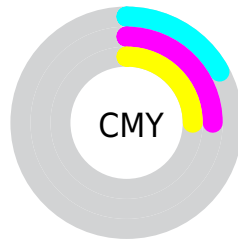


Cyan (0%)

Magenta (10%)

Yellow (10%)

Black (17%)



Cyan (17%)

Magenta (25%)

Yellow (25%)

# Brightness & Saturation Gradients

These gradients show how the Decimal color 13942462 changes by changing the brightness by 10 percent. The first figure shows a shift by +10% for each color and the second figure -10%.

Similar to the brightness gradients but the following saturation gradients show a change of the Decimal color 13942462 by changing the saturation by 10% instead.



 13942462	 13942462
16777215	 12100515
 16774902	 10324361
	 8613743
	 6969175
	 5324864
	 3811882
	 2364693
	 458752
	 0

 13942462

 13942462

 13937065

 13947859

 13931668

 13953256

 13926014

 13958910

 13920617

 13959167

 13915220

 13909823

 13904426

 13898772

 13893632

# Harmonies

## Analogous

The Analogous color harmony consists of three colors that are next to each other on the color wheel.



13745862



13942462



13811639

# Triad

The Triadic color harmony groups three colors that are evenly spaced from another and form a triangle on the color wheel.



13942462



12306105



12109010

# Complementary

The Complementary color scheme is a pair of colors which are on the opposite of each other on the color wheel.



13942462



12506324

# Split Complementary

Split-complementary colors differ from the complementary color scheme. The scheme consists of three colors, the original color and two neighbors of the complement color.



11716302



13942462



11847616

# Square

The Square scheme is like the rectangle color scheme, but the four colors are evenly spaced on the color wheel.



13942462



12895413



11585736



12698321

# Rectangle

The Rectangle color scheme consists of four colors that form a rectangle on the color wheel.



13942462



13615541



11585736



11978193

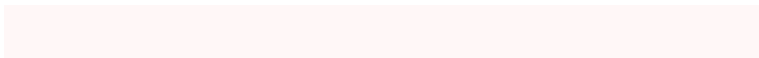


# Sweetspot

The Sweet Spot groups the original color and five complimentary colors.



13942462



16775159



13942484



8419962



0



8421504



# Same Dimension

The Same Dimension uses a secret algorithm to generate beautiful new colors.



13942462



16769248



13945278



7037024



11206656



2818048



# Inverse Universe

The Inverse Universe completely reimagines the original color for something new.



12506324



14745599



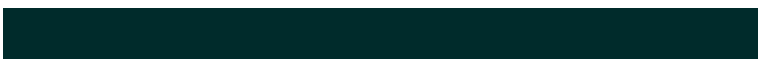
12503508



6318955



43947

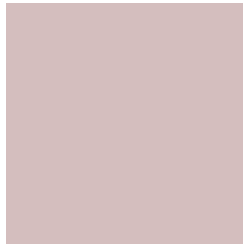


11051



# Previews

## White Background



This preview shows how the Decimal color 13942462 looks on a white background.

## Color Contrast Check

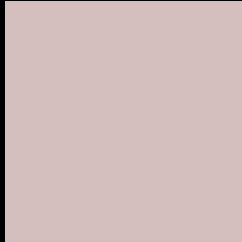
Large Text (above 18pt) WCAG AA × Fail

Any Text WCAG AA × Fail

Large Text (above 18pt) WCAG AAA × Fail

Any Text WCAG AAA × Fail

# Black Background



This preview shows how the Decimal color 13942462 looks on a black background.

## Color Contrast Check

Large Text (above 18pt) WCAG AA ✓ Pass

Any Text WCAG AA ✓ Pass

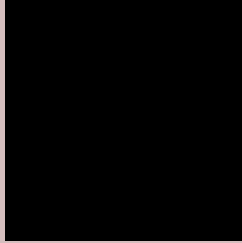
Large Text (above 18pt) WCAG AAA ✓ Pass

Any Text WCAG AAA ✓ Pass

If you want to check with other color combinations, try the [Color Contrast Checker](#).



## Decimal 13942462 Background



This preview shows how black text looks on a background with the Decimal color 13942462.



This preview shows how white text looks on a background with the Decimal color 13942462.

# Color Blindness Simulation

Color vision deficiency is a very complex topic, and I could not describe the different causes any better than Wikipedia does, so if you want to learn more, you should check out their [article about color blindness](#).

## Dichromacy





**Tritanopia**  
14073035

# Trichromacy



**Original Color**

13942462

**Protanomaly**

13418943

**Deuteranomaly**

14138814

**Tritanomaly**

14007750

# Monochromacy



**Original Color**

13942462

**Achromatopsia**

12961221

**Achromatomaly**

13288130

# CSS Examples

## Text

The CSS property to change the color of the text to Decimal 13942462 is called "color". The color property can be set on classes, ids or directly on the HTML element.

This example shows how text in the color #D4BEBE looks like.

```
.text, #text, p{  
    color:#D4BEBE  
}
```

If you want to add a text shadow in that color use the text-shadow property, you can generate a text shadow directly with our [CSS Text Shadow Generator](#).

Here you see how black text with a 4 pixel #D4BEBE colored shadow looks like.

```
.shadow{ text-shadow: 4px 4px 2px #D4BEBE
}
```

## Border

The CSS property to change the border of an element to Decimal 13942462 is called "border". The border property can be set on classes, ids or directly on the HTML element.

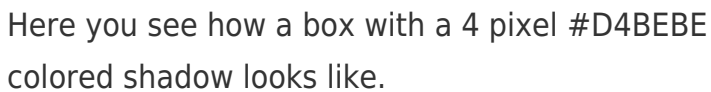
This example shows the color as border, it can be applied via the CSS property "border" or "border-color".

```
.border, #border, table{ border:4px solid
#D4BEBE }
```

If only the border color should be changed use the property `border-color`.

```
.border{ border-color:#D4BEBE }
```

If you want to add a box shadow in that color use:



Here you see how a box with a 4 pixel #D4BEBE colored shadow looks like.

```
.boxshadow{ -moz-box-shadow:4px 4px 4px  
4px #D4BEBE; -webkit-box-shadow:4px 4px  
4px 4px #D4BEBE; box-shadow:4px 4px 4px  
4px #D4BEBE }
```

# Background

The CSS property to change the background color of an element to Decimal 13942462 is called "background". The background property can be set on classes, ids or directly on the HTML element.

```
.background, #background, body{  
background:#D4BEBE }
```

If only the background color should be changed can be used:

```
.background{ background-color:#D4BEBE }
```

This example shows the color as background, it is applied via the CSS property "background".

To optimize and compress your CSS code, you can use our [online CSS compressor and optimizer](#) based on csstidy. If you want to create a linear or radial gradient as background or border, check our [CSS Gradient Generator](#).



Hey! You found this booklet interesting? Support Converting Colors with the new Membership Option!

The pro membership hides all ads, plus gives you double the colors in the color bucket, and more awesome pro features!

**[Learn more, Memberships starting at \\$2.50/m!](#)**

**Follow me  
on Twitter!**

@ConvertingColor