

# Converting Colors

Decimal(13996224)

Have a look what the booklet for  
Decimal(13996224) contains.

<b>Decimal(13996224)</b> .....	3
<i><b>Conversions</b></i> .....	4
<i><b>Details</b></i> .....	6
<i><b>Harmonies</b></i> .....	11
<i><b>Previews</b></i> .....	23
<i><b>Color Blindness Simulation</b></i> .....	26
<i><b>CSS Examples</b></i> .....	29

# **Color**

**Decimal(13996224)**

# Conversions

## Conversions Part 1

<b>Format</b>	<b>Color</b>
Hex	D590C0
RGB	213, 144, 192
RGB Percent	84%, 56%, 75%
CMY	0.1647, 0.4353, 0.2471
CMYK	0.00, 0.32, 0.10, 0.16
HSL	318°, 45%, 70%
HSV	318°, 32%, 84%
XYZ	46.9283, 37.8984, 54.7109
YIQ	170.1030, 25.7160, 29.5560

# Conversions

## Conversions Part 2

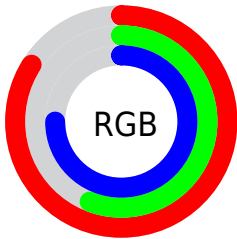
<b>Format</b>	<b>Color</b>
R <sub>Y</sub> B	213, 144, 192
Decimal	13996224
CIE Lab	67.95, 33.35, -14.27
CIE LCh	68, 36.275, 336.839
Yxy	37.8984, 0.3363, 0.2716
Android (android.graphics.Color)	4292186304 (0xFFD590C0)
YUV	170.1030, 10.7952, 37.6207
Hunter-Lab	61.5617, 28.3369, -9.5988

# Details

The Decimal color **13996224** is a light color, and the websafe version is hex **CC99CC**. A complement of this color would be **9491877**, and the grayscale version is **11184810**.

A 20% lighter version of the original color is **16762872**, and **10312842** is the 20% darker color. If you saturate the color by 10%, you get **13990842**, and if you desaturate by 10%, it is **14001606**.

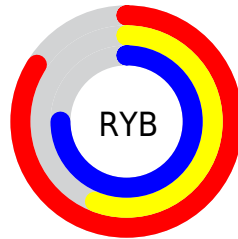
# Distribution



Red (84%)

Green (56%)

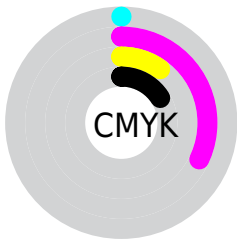
Blue (75%)



Red (84%)

Yellow (56%)

Blue (75%)

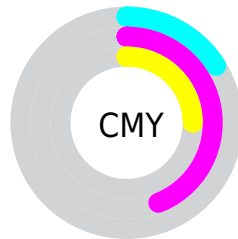


Cyan (0%)

Magenta (32%)

Yellow (10%)

Black (16%)



Cyan (16%)

Magenta (44%)

Yellow (25%)

# Brightness & Saturation Gradients

These gradients show how the Decimal color 13996224 changes by changing the brightness by 10 percent. The first figure shows a shift by +10% for each color and the second figure -10%.


Similar to the brightness gradients but the following saturation gradients show a change of the Decimal color 13996224 by changing the saturation by 10% instead.



 13996224

 13996224

16777215

 12154533

 16762872

 10312842

 16770047

 8537201

 6826840

 5182273

 3604523

 2228246

 0

 13996224

 13996224

 13990842

 14001606

 13985203

 14007245

 13979821

 14012627

 13974438

 14018010

 13969056

 14023648

 13963417

 14024679

 13959316

 14024685

 14024692

 14024698

# Harmonies

## Analogous

The Analogous color harmony consists of three colors that are next to each other on the color wheel.



11770586



13996224



15043743

# Triad

The Triadic color harmony groups three colors that are evenly spaced from another and form a triangle on the color wheel.



13996224



11839076



1947340

# Complementary

The Complementary color scheme is a pair of colors which are on the opposite of each other on the color wheel.



13996224



9491877

# Split Complementary

Split-complementary colors differ from the complementary color scheme. The scheme consists of three colors, the original color and two neighbors of the complement color.



3979180



13996224



9547632

# Square

The Square scheme is like the rectangle color scheme, but the four colors are evenly spaced on the color wheel.



13996224



13736810



6927755



4894945

# Rectangle

The Rectangle color scheme consists of four colors that form a rectangle on the color wheel.



13996224



15044234



6927755



2209730



# Sweetspot

The Sweet Spot groups the original color and five complimentary colors.



13996224



16770807



10850517



8417403



0



8421504



# Same Dimension

The Same Dimension uses a secret algorithm to generate beautiful new colors.



13996224



16751841



13996190



7037032



11206775



2818078



# Inverse Universe

The Inverse Universe completely reimagines the original color for something new.



13996224



16751841



9491911



7037032



11206775

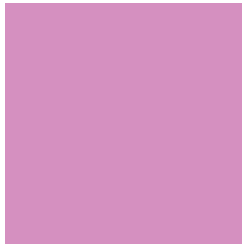


2818078



# Previews

## White Background



This preview shows how the Decimal color 13996224 looks on a white background.

## Color Contrast Check

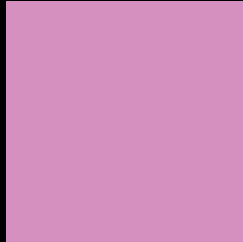
Large Text (above 18pt) WCAG AA × Fail

Any Text WCAG AA × Fail

Large Text (above 18pt) WCAG AAA × Fail

Any Text WCAG AAA × Fail

# Black Background



This preview shows how the Decimal color 13996224 looks on a black background.

## Color Contrast Check

Large Text (above 18pt) WCAG AA ✓ Pass

Any Text WCAG AA ✓ Pass

Large Text (above 18pt) WCAG AAA ✓ Pass

Any Text WCAG AAA ✓ Pass

If you want to check with other color combinations, try the [Color Contrast Checker](#).



## Decimal 13996224 Background



This preview shows how black text looks on a background with the Decimal color 13996224.

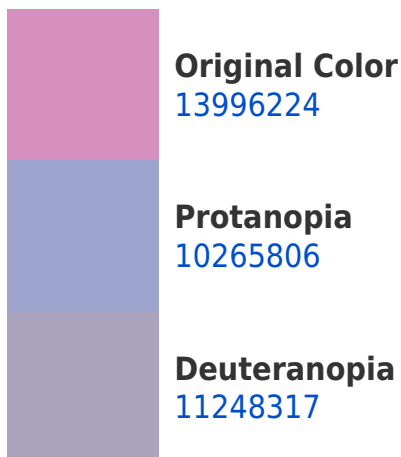


This preview shows how white text looks on a background with the Decimal color 13996224.

# Color Blindness Simulation

Color vision deficiency is a very complex topic, and I could not describe the different causes any better than Wikipedia does, so if you want to learn more, you should check out their [article about color blindness](#).

## Dichromacy





**Tritanopia**  
13735585

# Trichromacy



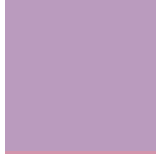
**Original Color**

13996224



**Protanomaly**

11640265



**Deuteranomaly**

12229566



**Tritanomaly**

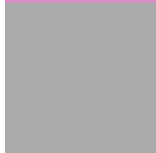
13800620

# Monochromacy



**Original Color**

13996224



**Achromatopsia**

11184810



**Achromatomaly**

12231090

# CSS Examples

## Text

The CSS property to change the color of the text to Decimal 13996224 is called "color". The color property can be set on classes, ids or directly on the HTML element.

This example shows how text in the color #D590C0 looks like.

```
.text, #text, p{  
  color:#D590C0  
}
```

If you want to add a text shadow in that color use the text-shadow property, you can generate a text shadow directly with our [CSS Text Shadow Generator](#).

Here you see how black text with a 4 pixel #D590C0 colored shadow looks like.

```
.shadow{ text-shadow: 4px 4px 2px #D590C0
}
```

## Border

The CSS property to change the border of an element to Decimal 13996224 is called "border". The border property can be set on classes, ids or directly on the HTML element.

This example shows the color as border, it can be applied via the CSS property "border" or "border-color".

```
.border, #border, table{ border:4px solid
#D590C0 }
```

If only the border color should be changed use the property `border-color`.

```
.border{ border-color:#D590C0 }
```

If you want to add a box shadow in that color use:

Here you see how a box with a 4 pixel #D590C0 colored shadow looks like.

```
.boxshadow{ -moz-box-shadow:4px 4px 4px  
4px #D590C0; -webkit-box-shadow:4px 4px  
4px 4px #D590C0; box-shadow:4px 4px 4px  
4px #D590C0 }
```

# Background

The CSS property to change the background color of an element to Decimal 13996224 is called "background". The background property can be set on classes, ids or directly on the HTML element.

```
.background, #background, body{  
background:#D590C0 }
```

If only the background color should be changed can be used:

```
.background{ background-color:#D590C0 }
```

This example shows the color as background, it is applied via the CSS property "background".

To optimize and compress your CSS code, you can use our [online CSS compressor and optimizer](#) based on csstidy. If you want to create a linear or radial gradient as background or border, check our [CSS Gradient Generator](#).



Hey! You found this booklet interesting? Support Converting Colors with the new Membership Option!

The pro membership hides all ads, plus gives you double the colors in the color bucket, and more awesome pro features!

**[Learn more, Memberships starting at \\$2.50/m!](#)**

**Follow me  
on Twitter!**

@ConvertingColor