

Converting Colors

Decimal(13997229)

Have a look what the booklet for
Decimal(13997229) contains.

Decimal(13997229)	3
<i>Conversions</i>	4
<i>Details</i>	6
<i>Harmonies</i>	11
<i>Previews</i>	23
<i>Color Blindness Simulation</i>	26
<i>CSS Examples</i>	29

Color

Decimal(13997229)

Conversions

Conversions Part 1

Format	Color
Hex	D594AD
RGB	213, 148, 173
RGB Percent	84%, 58%, 68%
CMY	0.1647, 0.4196, 0.3216
CMYK	0.00, 0.31, 0.19, 0.16
HSL	337°, 44%, 71%
HSV	337°, 31%, 84%
XYZ	45.5733, 38.3431, 44.5341
YIQ	170.2850, 30.7150, 21.5550

Conversions

Conversions Part 2

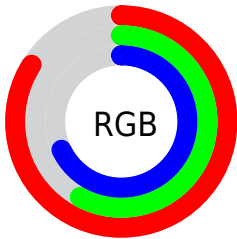
Format	Color
R _Y B	213, 148, 173
Decimal	13997229
CIE Lab	68.27, 28.10, -3.16
CIE LCh	68, 28.279, 353.581
Yxy	38.3431, 0.3548, 0.2985
Android (android.graphics.Color)	4292187309 (0xFFD594AD)
YUV	170.2850, 1.3385, 37.4611
Hunter-Lab	61.9218, 23.0096, 0.7039

Details

The Decimal color **13997229** is a light color, and the websafe version is hex **CC9999**. A complement of this color would be **9754044**, and the grayscale version is **11184810**.

A 20% lighter version of the original color is **16763876**, and **10313849** is the 20% darker color. If you saturate the color by 10%, you get **13991840**, and if you desaturate by 10%, it is **14002618**.

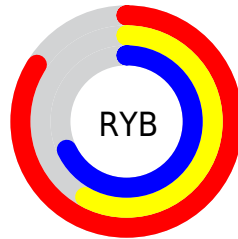
Distribution



Red (84%)

Green (58%)

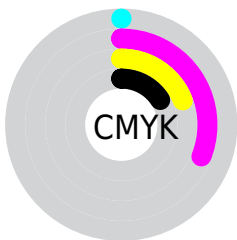
Blue (68%)



Red (84%)

Yellow (58%)

Blue (68%)

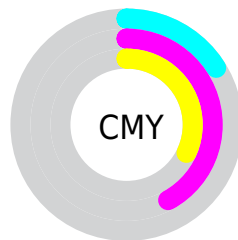


Cyan (0%)

Magenta (31%)

Yellow (19%)

Black (16%)



Cyan (16%)

Magenta (42%)

Yellow (32%)

Brightness & Saturation Gradients

These gradients show how the Decimal color 13997229 changes by changing the brightness by 10 percent. The first figure shows a shift by +10% for each color and the second figure -10%.

Similar to the brightness gradients but the following saturation gradients show a change of the Decimal color 13997229 by changing the saturation by 10% instead.

 13997229

 13997229

16777215

 12155538

 16763876

 10313849

 16771071

 8538208

 6828104

 5183794

 3539485

 2228225

 0

 13997229

 13997229

 13991840

 14002618

 13986195

 14008263

 13980806

 14013652

 13975417

 14019041

 13970027

 14024687

 13964382

 14024700

 13959250

 14024703

Harmonies

Analogous

The Analogous color harmony consists of three colors that are next to each other on the color wheel.



12753349



13997229



14325139

Triad

The Triadic color harmony groups three colors that are evenly spaced from another and form a triangle on the color wheel.



13997229



10791799



6271439

Complementary

The Complementary color scheme is a pair of colors which are on the opposite of each other on the color wheel.



13997229



9754044

Split Complementary

Split-complementary colors differ from the complementary color scheme. The scheme consists of three colors, the original color and two neighbors of the complement color.



5747898



13997229



8827271

Square

The Square scheme is like the rectangle color scheme, but the four colors are evenly spaced on the color wheel.



13997229



12493684



6993056



8301529

Rectangle

The Rectangle color scheme consists of four colors that form a rectangle on the color wheel.



13997229



13998212



6993056



5878473

Sweetspot

The Sweet Spot groups the original color and five complimentary colors.



13997229



16771313



12293333



8417655



0



8421504

Same Dimension

The Same Dimension uses a secret algorithm to generate beautiful new colors.



13997229



16753093



13998996



7037029



11206722



2818065

Inverse Universe

The Inverse Universe completely reimagines the original color for something new.



13997229



16753093



9752277



7037029



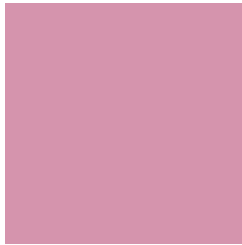
11206722



2818065

Previews

White Background



This preview shows how the Decimal color 13997229 looks on a white background.

Color Contrast Check

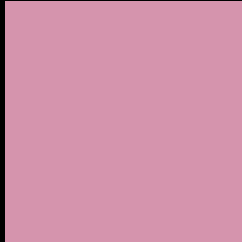
Large Text (above 18pt) WCAG AA × Fail

Any Text WCAG AA × Fail

Large Text (above 18pt) WCAG AAA × Fail

Any Text WCAG AAA × Fail

Black Background



This preview shows how the Decimal color 13997229 looks on a black background.

Color Contrast Check

Large Text (above 18pt) WCAG AA ✓ Pass

Any Text WCAG AA ✓ Pass

Large Text (above 18pt) WCAG AAA ✓ Pass

Any Text WCAG AAA ✓ Pass

If you want to check with other color combinations, try the [Color Contrast Checker](#).

Decimal 13997229 Background



This preview shows how black text looks on a background with the Decimal color 13997229.




This preview shows how white text looks on a background with the Decimal color 13997229.

Color Blindness Simulation

Color vision deficiency is a very complex topic, and I could not describe the different causes any better than Wikipedia does, so if you want to learn more, you should check out their [article about color blindness](#).

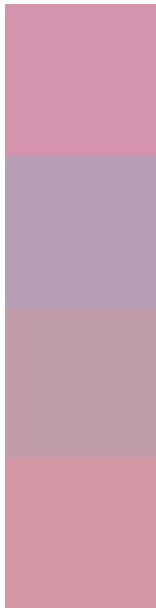
Dichromacy





Tritanopia
13932193

Trichromacy



Original Color
13997229

Protanomaly
11968436

Deuteranomaly
12688812

Tritanomaly
13931941

Monochromacy



Original Color
13997229

Achromatopsia
11184810

Achromatomaly
12231339

CSS Examples

Text

The CSS property to change the color of the text to Decimal 13997229 is called "color". The color property can be set on classes, ids or directly on the HTML element.

This example shows how text in the color #D594AD looks like.

```
.text, #text, p{  
    color:#D594AD  
}
```

If you want to add a text shadow in that color use the text-shadow property, you can generate a text shadow directly with our [CSS Text Shadow Generator](#).

Here you see how black text with a 4 pixel #D594AD colored shadow looks like.

```
.shadow{ text-shadow: 4px 4px 2px #D594AD }  
}
```

Border

The CSS property to change the border of an element to Decimal 13997229 is called "border". The border property can be set on classes, ids or directly on the HTML element.

This example shows the color as border, it can be applied via the CSS property "border" or "border-color".

```
.border, #border, table{ border:4px solid #D594AD }  
}
```

If only the border color should be changed use the property `border-color`.

```
.border{ border-color:#D594AD }
```

If you want to add a box shadow in that color use:

Here you see how a box with a 4 pixel #D594AD colored shadow looks like.

```
.boxshadow{ -moz-box-shadow:4px 4px 4px  
4px #D594AD; -webkit-box-shadow:4px 4px  
4px 4px #D594AD; box-shadow:4px 4px 4px  
4px #D594AD }
```

Background

The CSS property to change the background color of an element to Decimal 13997229 is called "background". The background property can be set on classes, ids or directly on the HTML element.

```
.background, #background, body{  
background:#D594AD }
```

If only the background color should be changed can be used:

```
.background{ background-color:#D594AD }
```

This example shows the color as background, it is applied via the CSS property "background".

To optimize and compress your CSS code, you can use our [online CSS compressor and optimizer](#) based on csstidy. If you want to create a linear or radial gradient as background or border, check our [CSS Gradient Generator](#).

Hey! You found this booklet interesting? Support Converting Colors with the new Membership Option!

The pro membership hides all ads, plus gives you double the colors in the color bucket, and more awesome pro features!

[Learn more, Memberships starting at \\$2.50/m!](#)

**Follow me
on Twitter!**

@ConvertingColor