

Converting Colors

Decimal(13999487)

Have a look what the booklet for
Decimal(13999487) contains.

Decimal(13999487)	3
<i>Conversions</i>	4
<i>Details</i>	6
<i>Harmonies</i>	11
<i>Previews</i>	23
<i>Color Blindness Simulation</i>	26
<i>CSS Examples</i>	29

Color

Decimal(13999487)

Conversions

Conversions Part 1

Format	Color
Hex	D59D7F
RGB	213, 157, 127
RGB Percent	84%, 62%, 50%
CMY	0.1647, 0.3843, 0.5020
CMYK	0.00, 0.26, 0.40, 0.16
HSL	21°, 51%, 67%
HSV	21°, 40%, 84%
XYZ	43.3283, 39.7924, 25.4757
YIQ	170.3240, 43.0060, 2.5420

Conversions

Conversions Part 2

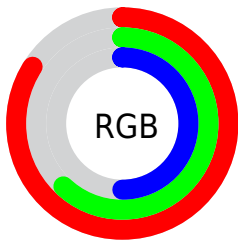
Format	Color
RYB	213, 173, 127
Decimal	13999487
CIELab	69.32, 17.05, 23.87
CIElCh	69, 29.328, 54.463
Yxy	39.7924, 0.3990, 0.3664
Android (android.graphics.Color)	4292189567 (0xFFD59D7F)
YUV	170.3240, -21.3587, 37.4269
Hunter-Lab	63.0812, 12.2134, 20.2122

Details

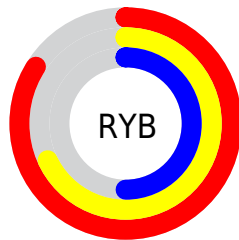
The Decimal color **13999487** is a light color, and the websafe version is hex **CC9966**. A complement of this color would be **8370133**, and the grayscale version is **11250603**.

A 20% lighter version of the original color is **16766132**, and **10250830** is the 20% darker color. If you saturate the color by 10%, you get **13995882**, and if you desaturate by 10%, it is **14003092**.

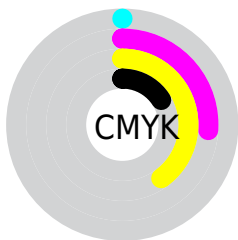
Distribution



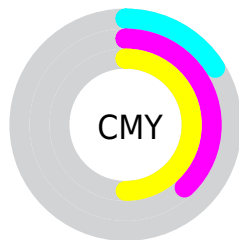
- Red (84%)
- Green (62%)
- Blue (50%)



- Red (84%)
- Yellow (68%)
- Blue (50%)



- Cyan (0%)
- Magenta (26%)
- Yellow (40%)
- Black (16%)



- Cyan (16%)
- Magenta (38%)
- Yellow (50%)

Brightness & Saturation Gradients

These gradients show how the Decimal color 13999487 changes by changing the brightness by 10 percent. The first figure shows a shift by +10% for each color and the second figure -10%.

Similar to the brightness gradients but the following saturation gradients show a change of the Decimal color 13999487 by changing the saturation by 10% instead.

 13999487

 13999487

16777215

 12092262

 16766132

 10250830

 16773328

 8474935

 16777196

 6699553

 4989963

 3346176

 1769473

 0

 13999487

 13999487

 13995882

 14003092

 13992276

 14006698

 13988671

 14010303

 13985322

 14013652

 13981716

 14017258

 13978112

 14020863

 14024447

 14024703

Harmonies

Analogous

The Analogous color harmony consists of three colors that are next to each other on the color wheel.



14587797



13999487



12691060

Triad

The Triadic color harmony groups three colors that are evenly spaced from another and form a triangle on the color wheel.



13999487



6928547



10921177

Complementary

The Complementary color scheme is a pair of colors which are on the opposite of each other on the color wheel.



13999487



8370133

Split Complementary

Split-complementary colors differ from the complementary color scheme. The scheme consists of three colors, the original color and two neighbors of the complement color.



8367582



13999487



5617854

Square

The Square scheme is like the rectangle color scheme, but the four colors are evenly spaced on the color wheel.



13999487



8893578



6206676



13081544

Rectangle

The Rectangle color scheme consists of four colors that form a rectangle on the color wheel.



13999487



11512949



6206676



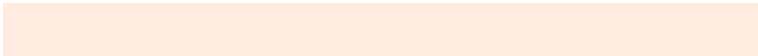
10135516

Sweetspot

The Sweet Spot groups the original color and five complimentary colors.



13999487



16772064



13991864



8418414



0



8421504

Same Dimension

The Same Dimension uses a secret algorithm to generate beautiful new colors.



13999487



16756613



14010239



7038048



11222016



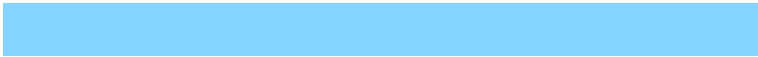
2821888

Inverse Universe

The Inverse Universe completely reimagines the original color for something new.



8370133



8770815



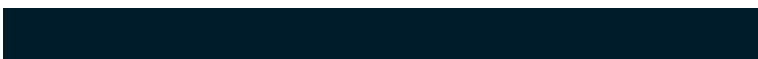
8359381



6317931



28587



7211

Previews

White Background



This preview shows how the Decimal color 13999487 looks on a white background.

Color Contrast Check

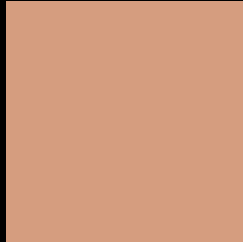
Large Text (above 18pt) WCAG AA × Fail

Any Text WCAG AA × Fail

Large Text (above 18pt) WCAG AAA × Fail

Any Text WCAG AAA × Fail

Black Background



This preview shows how the Decimal color 13999487 looks on a black background.

Color Contrast Check

Large Text (above 18pt) WCAG AA ✓ Pass

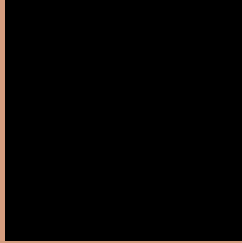
Any Text WCAG AA ✓ Pass

Large Text (above 18pt) WCAG AAA ✓ Pass

Any Text WCAG AAA ✓ Pass

If you want to check with other color combinations, try the [Color Contrast Checker](#).

Decimal 13999487 Background



This preview shows how black text looks on a background with the Decimal color 13999487.



This preview shows how white text looks on a background with the Decimal color 13999487.

Color Blindness Simulation

Color vision deficiency is a very complex topic, and I could not describe the different causes any better than Wikipedia does, so if you want to learn more, you should check out their [article about color blindness](#).


Dichromacy



Original Color
13999487

Protanopia
11905413

Deuteranopia
13149054



Tritanopia
14194852

Trichromacy



Original Color
13999487

Protanomaly
12690819

Deuteranomaly
13476222

Tritanomaly
14129815

Monochromacy



Original Color
13999487

Achromatopsia
11184810

Achromatomaly
12232090

CSS Examples

Text

The CSS property to change the color of the text to Decimal 13999487 is called "color". The color property can be set on classes, ids or directly on the HTML element.

This example shows how text in the color #D59D7F looks like.

```
.text, #text, p{  
    color:#D59D7F  
}
```

If you want to add a text shadow in that color use the text-shadow property, you can generate a text shadow directly with our [CSS Text Shadow Generator](#).

Here you see how black text with a 4 pixel #D59D7F colored shadow looks like.

```
.shadow{ text-shadow: 4px 4px 2px #D59D7F
}
```

Border

The CSS property to change the border of an element to Decimal 13999487 is called "border". The border property can be set on classes, ids or directly on the HTML element.

This example shows the color as border, it can be applied via the CSS property "border" or "border-color".

```
.border, #border, table{ border:4px solid
#D59D7F }
```

If only the border color should be changed use the property `border-color`.

```
.border{ border-color:#D59D7F }
```

If you want to add a box shadow in that color use:

Here you see how a box with a 4 pixel #D59D7F colored shadow looks like.

```
.boxshadow{ -moz-box-shadow:4px 4px 4px  
4px #D59D7F; -webkit-box-shadow:4px 4px  
4px 4px #D59D7F; box-shadow:4px 4px 4px  
4px #D59D7F }
```

Background

The CSS property to change the background color of an element to Decimal 13999487 is called "background". The background property can be set on classes, ids or directly on the HTML element.

```
.background, #background, body{  
background:#D59D7F }
```

If only the background color should be changed can be used:

```
.background{ background-color:#D59D7F }
```

This example shows the color as background, it is applied via the CSS property "background".

To optimize and compress your CSS code, you can use our [online CSS compressor and optimizer](#) based on csstidy. If you want to create a linear or radial gradient as background or border, check our [CSS Gradient Generator](#).

Hey! You found this booklet interesting? Support Converting Colors with the new Membership Option!

The pro membership hides all ads, plus gives you double the colors in the color bucket, and more awesome pro features!

[Learn more, Memberships starting at \\$2.50/m!](#)

**Follow me
on Twitter!**

@ConvertingColor