

Converting Colors

Decimal(14001026)

Have a look what the booklet for
Decimal(14001026) contains.

Decimal(14001026)	3
<i>Conversions</i>	4
<i>Details</i>	6
<i>Harmonies</i>	11
<i>Previews</i>	23
<i>Color Blindness Simulation</i>	26
<i>CSS Examples</i>	29

Color

Decimal(14001026)

Conversions

Conversions Part 1

Format	Color
Hex	D5A382
RGB	213, 163, 130
RGB Percent	84%, 64%, 51%
CMY	0.1647, 0.3608, 0.4902
CMYK	0.00, 0.23, 0.39, 0.16
HSL	24°, 50%, 67%
HSV	24°, 39%, 84%
XYZ	44.5670, 41.9522, 26.8677
YIQ	174.1880, 40.3930, 0.3370

Conversions

Conversions Part 2

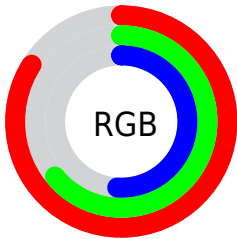
Format	Color
R _Y B	213, 185, 130
Decimal	14001026
CIE Lab	70.84, 14.14, 24.28
CIE LCh	71, 28.095, 59.776
Yxy	41.9522, 0.3931, 0.3700
Android (android.graphics.Color)	4292191106 (0xFFD5A382)
YUV	174.1880, -21.7847, 34.0381
Hunter-Lab	64.7705, 9.4731, 20.7450

Details

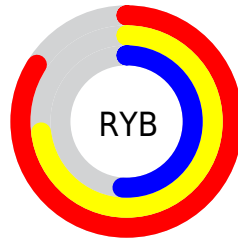
The Decimal color **14001026** is a light color, and the websafe version is hex **CC9966**. A complement of this color would be **8565973**, and the grayscale version is **11447982**.

A 20% lighter version of the original color is **16767671**, and **10317648** is the 20% darker color. If you saturate the color by 10%, you get **13997677**, and if you desaturate by 10%, it is **14004375**.

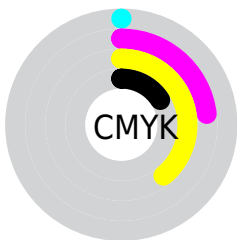
Distribution



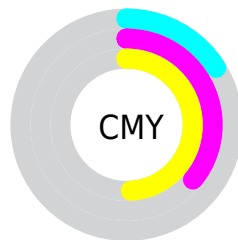
- Red (84%)
- Green (64%)
- Blue (51%)



- Red (84%)
- Yellow (73%)
- Blue (51%)



- Cyan (0%)
- Magenta (23%)
- Yellow (39%)
- Black (16%)



- Cyan (16%)
- Magenta (36%)
- Yellow (49%)

Brightness & Saturation Gradients

These gradients show how the Decimal color 14001026 changes by changing the brightness by 10 percent. The first figure shows a shift by +10% for each color and the second figure -10%.

Similar to the brightness gradients but the following saturation gradients show a change of the Decimal color 14001026 by changing the saturation by 10% instead.

 14001026

 14001026

16777215

 12093801

 16767671

 10317648

 16774867

 8476473

 16777199

 6766371

 5056782

 3412992

 1900544

 0

 14001026

 14001026

13997677

14004375

13994327

14007725

13991234

14010818

13987885

14014167

13984535

14017516

13981186

14020863

13980928

14024191

14024703

Harmonies

Analogous

The Analogous color harmony consists of three colors that are next to each other on the color wheel.



14720149



14001026



12627066

Triad

The Triadic color harmony groups three colors that are evenly spaced from another and form a triangle on the color wheel.



14001026



7126188



11642842

Complementary

The Complementary color scheme is a pair of colors which are on the opposite of each other on the color wheel.



14001026



8565973

Split Complementary

Split-complementary colors differ from the complementary color scheme. The scheme consists of three colors, the original color and two neighbors of the complement color.



9285856



14001026



6273990

Square

The Square scheme is like the rectangle color scheme, but the four colors are evenly spaced on the color wheel.



14001026



8894867



7124953



13541319

Rectangle

The Rectangle color scheme consists of four colors that form a rectangle on the color wheel.



14001026



11448701



7124953



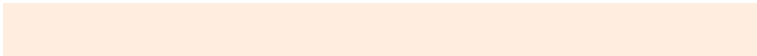
10857181

Sweetspot

The Sweet Spot groups the original color and five complimentary colors.



14001026



16772576



13992629



8418670



0



8421504

Same Dimension

The Same Dimension uses a secret algorithm to generate beautiful new colors.



14001026



16758663



14011266



7038304



11224064



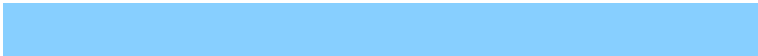
2822400

Inverse Universe

The Inverse Universe completely reimagines the original color for something new.



8565973



8900607



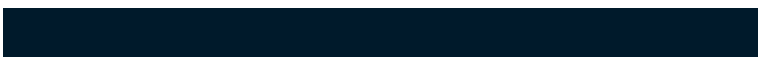
8555733



6317931



26539



6699

Previews

White Background



This preview shows how the Decimal color 14001026 looks on a white background.

Color Contrast Check

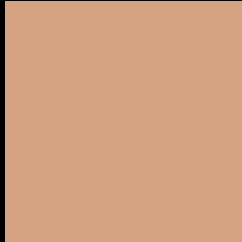
Large Text (above 18pt) WCAG AA × Fail

Any Text WCAG AA × Fail

Large Text (above 18pt) WCAG AAA × Fail

Any Text WCAG AAA × Fail

Black Background



This preview shows how the Decimal color 14001026 looks on a black background.

Color Contrast Check

Large Text (above 18pt) WCAG AA ✓ Pass

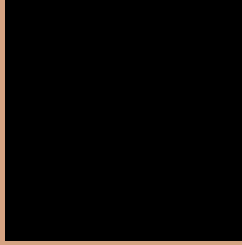
Any Text WCAG AA ✓ Pass

Large Text (above 18pt) WCAG AAA ✓ Pass

Any Text WCAG AAA ✓ Pass

If you want to check with other color combinations, try the [Color Contrast Checker](#).

Decimal 14001026 Background



This preview shows how black text looks on a background with the Decimal color 14001026.




This preview shows how white text looks on a background with the Decimal color 14001026.

Color Blindness Simulation

Color vision deficiency is a very complex topic, and I could not describe the different causes any better than Wikipedia does, so if you want to learn more, you should check out their [article about color blindness](#).

Dichromacy





Tritanopia
14261930

Trichromacy



Original Color
14001026

Protanomaly
12822917

Deuteranomaly
13673857

Tritanomaly
14196891

Monochromacy



Original Color
14001026

Achromatopsia
11447982

Achromatomaly
12364446

CSS Examples

Text

The CSS property to change the color of the text to Decimal 14001026 is called "color". The color property can be set on classes, ids or directly on the HTML element.

This example shows how text in the color #D5A382 looks like.

```
.text, #text, p{  
  color:#D5A382  
}
```

If you want to add a text shadow in that color use the text-shadow property, you can generate a text shadow directly with our [CSS Text Shadow Generator](#).

Here you see how black text with a 4 pixel #D5A382 colored shadow looks like.

```
.shadow{ text-shadow: 4px 4px 2px #D5A382
}
```

Border

The CSS property to change the border of an element to Decimal 14001026 is called "border". The border property can be set on classes, ids or directly on the HTML element.

This example shows the color as border, it can be applied via the CSS property "border" or "border-color".

```
.border, #border, table{ border:4px solid
#D5A382 }
```

If only the border color should be changed use the property `border-color`.

```
.border{ border-color:#D5A382 }
```

If you want to add a box shadow in that color use:

Here you see how a box with a 4 pixel #D5A382 colored shadow looks like.

```
.boxshadow{ -moz-box-shadow:4px 4px 4px  
4px #D5A382; -webkit-box-shadow:4px 4px  
4px 4px #D5A382; box-shadow:4px 4px 4px  
4px #D5A382 }
```

Background

The CSS property to change the background color of an element to Decimal 14001026 is called "background". The background property can be set on classes, ids or directly on the HTML element.

```
.background, #background, body{  
background:#D5A382 }
```

If only the background color should be changed can be used:

```
.background{ background-color:#D5A382 }
```

This example shows the color as background, it is applied via the CSS property "background".

To optimize and compress your CSS code, you can use our [online CSS compressor and optimizer](#) based on csstidy. If you want to create a linear or radial gradient as background or border, check our [CSS Gradient Generator](#).

Hey! You found this booklet interesting? Support Converting Colors with the new Membership Option!

The pro membership hides all ads, plus gives you double the colors in the color bucket, and more awesome pro features!

[Learn more, Memberships starting at \\$2.50/m!](#)

**Follow me
on Twitter!**

@ConvertingColor