

Converting Colors

Decimal(14001301)

Have a look what the booklet for
Decimal(14001301) contains.

Decimal(14001301)	3
<i>Conversions</i>	4
<i>Details</i>	6
<i>Harmonies</i>	11
<i>Previews</i>	23
<i>Color Blindness Simulation</i>	26
<i>CSS Examples</i>	29

Color

Decimal(14001301)

Conversions

Conversions Part 1

Format	Color
Hex	D5A495
RGB	213, 164, 149
RGB Percent	84%, 64%, 58%
CMY	0.1647, 0.3569, 0.4157
CMYK	0.00, 0.23, 0.30, 0.16
HSL	14°, 43%, 71%
HSV	14°, 30%, 84%
XYZ	46.1408, 42.8670, 34.2760
YIQ	176.9410, 34.0190, 5.7230

Conversions

Conversions Part 2

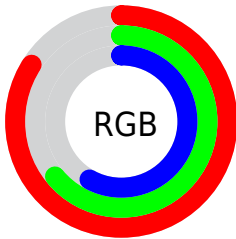
Format	Color
R_{YB}	213, 169, 149
Decimal	14001301
CIE _{Lab}	71.46, 15.96, 14.75
CIE _{LCh}	71, 21.732, 42.739
Yxy	42.8670, 0.3743, 0.3477
Android (android.graphics.Color)	4292191381 (0xFFD5A495)
YUV	176.9410, -13.7749, 31.6237
Hunter-Lab	65.4729, 11.2172, 14.7918

Details

The Decimal color **14001301** is a light color, and the websafe version is hex **CC9999**. A complement of this color would be **9815765**, and the grayscale version is **11645361**.

A 20% lighter version of the original color is **16767947**, and **10317922** is the 20% darker color. If you saturate the color by 10%, you get **13997184**, and if you desaturate by 10%, it is **14005418**.

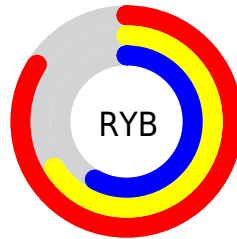
Distribution



Red (84%)

Green (64%)

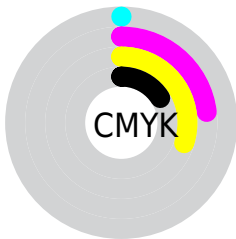
Blue (58%)



Red (84%)

Yellow (66%)

Blue (58%)

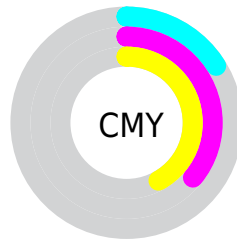


Cyan (0%)

Magenta (23%)

Yellow (30%)

Black (16%)



Cyan (16%)

Magenta (36%)

Yellow (42%)

Brightness & Saturation Gradients

These gradients show how the Decimal color 14001301 changes by changing the brightness by 10 percent. The first figure shows a shift by +10% for each color and the second figure -10%.

Similar to the brightness gradients but the following saturation gradients show a change of the Decimal color 14001301 by changing the saturation by 10% instead.

 14001301

 14001301

16777215

 12159611

 16767947

 10317922


 16775399

 8542026

 6832180

 5188126

 3609607

 2162688

 0

 14001301

 14001301

 13997184

 14005418

 13992810

 14009792

 13988693

 14013909

 13984576

 14018026

 13980202

 14022399

 13976085

 14024703

 13971968

Harmonies

Analogous

The Analogous color harmony consists of three colors that are next to each other on the color wheel.



14197159



14001301



13216394

Triad

The Triadic color harmony groups three colors that are evenly spaced from another and form a triangle on the color wheel.



14001301



9025955



10727125

Complementary

The Complementary color scheme is a pair of colors which are on the opposite of each other on the color wheel.



14001301



9815765

Split Complementary

Split-complementary colors differ from the complementary color scheme. The scheme consists of three colors, the original color and two neighbors of the complement color.



9090260



14001301



8043191

Square

The Square scheme is like the rectangle color scheme, but the four colors are evenly spaced on the color wheel.



14001301



10466962



7977417



12429260

Rectangle

The Rectangle color scheme consists of four colors that form a rectangle on the color wheel.



14001301



12365448



7977417



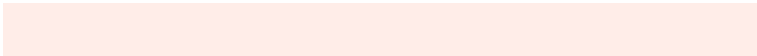
10137814

Sweetspot

The Sweet Spot groups the original color and five complimentary colors.



14001301



16772584



13997510



8418673



0



8421504

Same Dimension

The Same Dimension uses a secret algorithm to generate beautiful new colors.



14001301



16759203



14009493



7037792



11216896



2820608

Inverse Universe

The Inverse Universe completely reimagines the original color for something new.



9815765



10742271



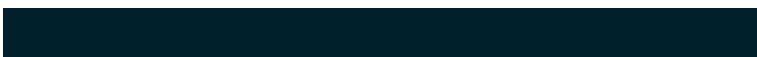
9807573



6318443



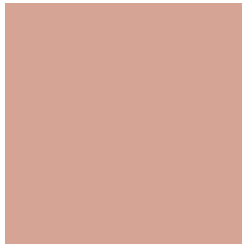
33707



8491

Previews

White Background



This preview shows how the Decimal color 14001301 looks on a white background.

Color Contrast Check

Large Text (above 18pt) WCAG AA × Fail

Any Text WCAG AA × Fail

Large Text (above 18pt) WCAG AAA × Fail

Any Text WCAG AAA × Fail

Black Background



This preview shows how the Decimal color 14001301 looks on a black background.

Color Contrast Check

Large Text (above 18pt) WCAG AA ✓ Pass

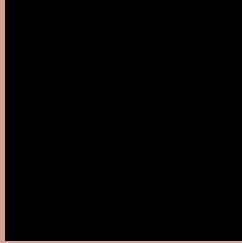
Any Text WCAG AA ✓ Pass

Large Text (above 18pt) WCAG AAA ✓ Pass

Any Text WCAG AAA ✓ Pass

If you want to check with other color combinations, try the [Color Contrast Checker](#).

Decimal 14001301 Background



This preview shows how black text looks on a background with the Decimal color 14001301.




This preview shows how white text looks on a background with the Decimal color 14001301.

Color Blindness Simulation

Color vision deficiency is a very complex topic, and I could not describe the different causes any better than Wikipedia does, so if you want to learn more, you should check out their [article about color blindness](#).

Dichromacy





Tritanopia
14196909

Trichromacy



Original Color
14001301

Protanomaly
12757912

Deuteranomaly
13543316

Tritanomaly
14131620

Monochromacy



Original Color
14001301

Achromatopsia
11645361

Achromatomaly
12496039

CSS Examples

Text

The CSS property to change the color of the text to Decimal 14001301 is called "color". The color property can be set on classes, ids or directly on the HTML element.

This example shows how text in the color #D5A495 looks like.

```
.text, #text, p{  
    color:#D5A495  
}
```

If you want to add a text shadow in that color use the text-shadow property, you can generate a text shadow directly with our [CSS Text Shadow Generator](#).

Here you see how black text with a 4 pixel #D5A495 colored shadow looks like.

```
.shadow{ text-shadow: 4px 4px 2px #D5A495
}
```

Border

The CSS property to change the border of an element to Decimal 14001301 is called "border". The border property can be set on classes, ids or directly on the HTML element.

This example shows the color as border, it can be applied via the CSS property "border" or "border-color".

```
.border, #border, table{ border:4px solid
#D5A495 }
```

If only the border color should be changed use the property `border-color`.

```
.border{ border-color:#D5A495 }
```

If you want to add a box shadow in that color use:

Here you see how a box with a 4 pixel #D5A495 colored shadow looks like.

```
.boxshadow{ -moz-box-shadow:4px 4px 4px  
4px #D5A495; -webkit-box-shadow:4px 4px  
4px 4px #D5A495; box-shadow:4px 4px 4px  
4px #D5A495 }
```

Background

The CSS property to change the background color of an element to Decimal 14001301 is called "background". The background property can be set on classes, ids or directly on the HTML element.

```
.background, #background, body{  
background:#D5A495 }
```

If only the background color should be changed can be used:

```
.background{ background-color:#D5A495 }
```

This example shows the color as background, it is applied via the CSS property "background".

To optimize and compress your CSS code, you can use our [online CSS compressor and optimizer](#) based on csstidy. If you want to create a linear or radial gradient as background or border, check our [CSS Gradient Generator](#).

Hey! You found this booklet interesting? Support Converting Colors with the new Membership Option!

The pro membership hides all ads, plus gives you double the colors in the color bucket, and more awesome pro features!

[Learn more, Memberships starting at \\$2.50/m!](#)

**Follow me
on Twitter!**

@ConvertingColor