

# Converting Colors

Decimal(14001309)

Have a look what the booklet for  
Decimal(14001309) contains.

<b>Decimal(14001309)</b> .....	3
<i><b>Conversions</b></i> .....	4
<i><b>Details</b></i> .....	6
<i><b>Harmonies</b></i> .....	11
<i><b>Previews</b></i> .....	23
<i><b>Color Blindness Simulation</b></i> .....	26
<i><b>CSS Examples</b></i> .....	29

# **Color**

**Decimal(14001309)**

# Conversions

## Conversions Part 1

Format	Color
Hex	D5A49D
RGB	213, 164, 157
RGB Percent	84%, 64%, 62%
CMY	0.1647, 0.3569, 0.3843
CMYK	0.00, 0.23, 0.26, 0.16
HSL	8°, 40%, 73%
HSV	8°, 26%, 84%
XYZ	46.8018, 43.1314, 37.7568
YIQ	177.8530, 31.4510, 8.2110

# Conversions

## Conversions Part 2

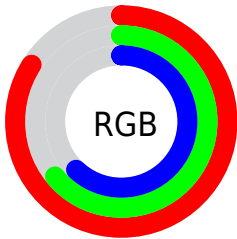
<b>Format</b>	<b>Color</b>
<b>R<sub>YB</sub></b>	213, 165, 157
Decimal	14001309
CIE Lab	71.64, 17.06, 10.60
CIE LCh	72, 20.081, 31.862
Yxy	43.1314, 0.3665, 0.3378
Android (android.graphics.Color)	4292191389 (0xFFD5A49D)
YUV	177.8530, -10.2805, 30.8239
Hunter-Lab	65.6745, 12.2747, 11.8859

# Details

The Decimal color **14001309** is a light color, and the websafe version is hex **CC9999**. A complement of this color would be **10342101**, and the grayscale version is **11711154**.

A 20% lighter version of the original color is **16767956**, and **10317930** is the 20% darker color. If you saturate the color by 10%, you get **13996424**, and if you desaturate by 10%, it is **14006194**.

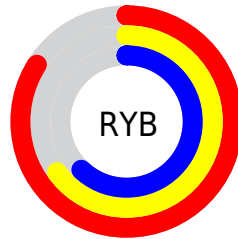
# Distribution



Red (84%)

Green (64%)

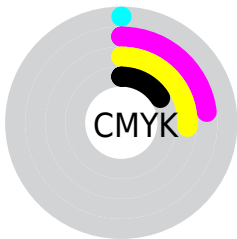
Blue (62%)



Red (84%)

Yellow (65%)

Blue (62%)

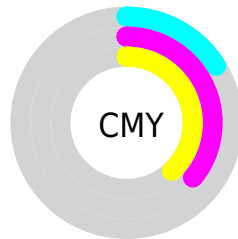


Cyan (0%)

Magenta (23%)

Yellow (26%)

Black (16%)



Cyan (16%)

Magenta (36%)

Yellow (38%)

# Brightness & Saturation Gradients

These gradients show how the Decimal color 14001309 changes by changing the brightness by 10 percent. The first figure shows a shift by +10% for each color and the second figure -10%.

Similar to the brightness gradients but the following saturation gradients show a change of the Decimal color 14001309 by changing the saturation by 10% instead.



 14001309

 14001309

16777215

 12159619

 16767956

 10317930

 16775408

 8607570

 6832187

 5187877

 3609616

 2228224

 0

 14001309

 14001309

 13996424

 14006194

 13991794

 14010824

 13986909

 14015709

 13982024

 14020594

 13977395

 14024703

 13972509

 13967880

 13966080

# Harmonies

## Analogous

The Analogous color harmony consists of three colors that are next to each other on the color wheel.



13935535



14001309



13412752

# Triad

The Triadic color harmony groups three colors that are evenly spaced from another and form a triangle on the color wheel.



14001309



9746590



10269140

# Complementary

The Complementary color scheme is a pair of colors which are on the opposite of each other on the color wheel.



14001309



10342101

# Split Complementary

Split-complementary colors differ from the complementary color scheme. The scheme consists of three colors, the original color and two neighbors of the complement color.



8894159



14001309



8633008

# Square

The Square scheme is like the rectangle color scheme, but the four colors are evenly spaced on the color wheel.



14001309



11056272



8239554



11840207

# Rectangle

The Rectangle color scheme consists of four colors that form a rectangle on the color wheel.



14001309



12758412



8239554



9745363



# Sweetspot

The Sweet Spot groups the original color and five complimentary colors.



14001309



16772587



13999566



8418419



0



8421504



# Same Dimension

The Same Dimension uses a secret algorithm to generate beautiful new colors.



14001309



16758957



14008477



7037536



11212032



2819328

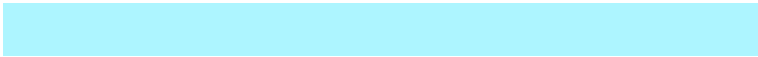


# Inverse Universe

The Inverse Universe completely reimagines the original color for something new.



10342101



11400703



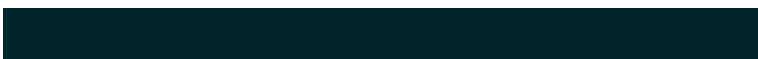
10334933



6318699



38315

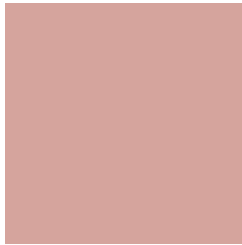


9771



# Previews

## White Background



This preview shows how the Decimal color 14001309 looks on a white background.

## Color Contrast Check

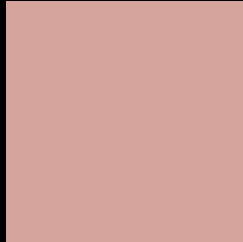
Large Text (above 18pt) WCAG AA × Fail

Any Text WCAG AA × Fail

Large Text (above 18pt) WCAG AAA × Fail

Any Text WCAG AAA × Fail

# Black Background



This preview shows how the Decimal color 14001309 looks on a black background.

## Color Contrast Check

Large Text (above 18pt) WCAG AA ✓ Pass

Any Text WCAG AA ✓ Pass

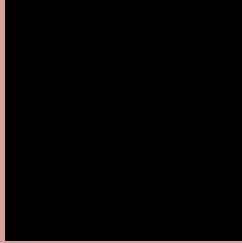
Large Text (above 18pt) WCAG AAA ✓ Pass

Any Text WCAG AAA ✓ Pass

If you want to check with other color combinations, try the [Color Contrast Checker](#).



## Decimal 14001309 Background



This preview shows how black text looks on a background with the Decimal color 14001309.



This preview shows how white text looks on a background with the Decimal color 14001309.

# Color Blindness Simulation

Color vision deficiency is a very complex topic, and I could not describe the different causes any better than Wikipedia does, so if you want to learn more, you should check out their [article about color blindness](#).

## Dichromacy



**Original Color**  
14001309

**Protanopia**  
11972515

**Deuteranopia**  
13150620



**Tritanopia**  
14131630

# Trichromacy



**Original Color**  
14001309

**Protanomaly**  
12692385

**Deuteranomaly**  
13477788

**Tritanomaly**  
14066344

# Monochromacy



**Original Color**  
14001309

**Achromatopsia**  
11711154

**Achromatomaly**  
12561834

# CSS Examples

## Text

The CSS property to change the color of the text to Decimal 14001309 is called "color". The color property can be set on classes, ids or directly on the HTML element.

This example shows how text in the color #D5A49D looks like.

```
.text, #text, p{  
    color:#D5A49D  
}
```

If you want to add a text shadow in that color use the text-shadow property, you can generate a text shadow directly with our [CSS Text Shadow Generator](#).

Here you see how black text with a 4 pixel #D5A49D colored shadow looks like.

```
.shadow{ text-shadow: 4px 4px 2px #D5A49D
}
```

## Border

The CSS property to change the border of an element to Decimal 14001309 is called "border". The border property can be set on classes, ids or directly on the HTML element.

This example shows the color as border, it can be applied via the CSS property "border" or "border-color".

```
.border, #border, table{ border:4px solid
#D5A49D }
```

If only the border color should be changed use the property `border-color`.

```
.border{ border-color:#D5A49D }
```

If you want to add a box shadow in that color use:

Here you see how a box with a 4 pixel #D5A49D colored shadow looks like.

```
.boxshadow{ -moz-box-shadow:4px 4px 4px  
4px #D5A49D; -webkit-box-shadow:4px 4px  
4px 4px #D5A49D; box-shadow:4px 4px 4px  
4px #D5A49D }
```

# Background

The CSS property to change the background color of an element to Decimal 14001309 is called "background". The background property can be set on classes, ids or directly on the HTML element.

```
.background, #background, body{  
background:#D5A49D }
```

If only the background color should be changed can be used:

```
.background{ background-color:#D5A49D }
```

This example shows the color as background, it is applied via the CSS property "background".

To optimize and compress your CSS code, you can use our [online CSS compressor and optimizer](#) based on csstidy. If you want to create a linear or radial gradient as background or border, check our [CSS Gradient Generator](#).



Hey! You found this booklet interesting? Support Converting Colors with the new Membership Option!

The pro membership hides all ads, plus gives you double the colors in the color bucket, and more awesome pro features!

**[Learn more, Memberships starting at \\$2.50/m!](#)**

**Follow me  
on Twitter!**

@ConvertingColor