

# Converting Colors

Decimal(14002087)

Have a look what the booklet for  
Decimal(14002087) contains.

<b>Decimal(14002087)</b> .....	3
<i><b>Conversions</b></i> .....	4
<i><b>Details</b></i> .....	6
<i><b>Harmonies</b></i> .....	11
<i><b>Previews</b></i> .....	23
<i><b>Color Blindness Simulation</b></i> .....	26
<i><b>CSS Examples</b></i> .....	29

# **Color**

**Decimal(14002087)**

# Conversions

## Conversions Part 1

Format	Color
Hex	D5A7A7
RGB	213, 167, 167
RGB Percent	84%, 65%, 65%
CMY	0.1647, 0.3451, 0.3451
CMYK	0.00, 0.22, 0.22, 0.16
HSL	0°, 35%, 75%
HSV	0°, 22%, 84%
XYZ	48.2343, 44.5736, 42.6206
YIQ	180.7540, 27.4160, 9.7520

# Conversions

## Conversions Part 2

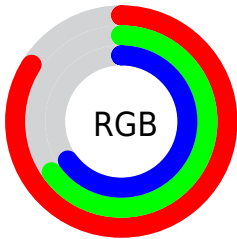
Format	Color
R <sub>Y</sub> B	213, 167, 167
Decimal	14002087
CIE Lab	72.61, 16.88, 6.47
CIE LCh	73, 18.078, 20.986
Yxy	44.5736, 0.3562, 0.3291
Android (android.graphics.Color)	4292192167 (0xFFD5A7A7)
YUV	180.7540, -6.7807, 28.2797
Hunter-Lab	66.7635, 12.1242, 8.8848

# Details

The Decimal color **14002087** is a light color, and the websafe version is hex **CC9999**. A complement of this color would be **10999253**, and the grayscale version is **11908533**.

A 20% lighter version of the original color is **16768734**, and **10384243** is the 20% darker color. If you saturate the color by 10%, you get **13996690**, and if you desaturate by 10%, it is **14007484**.

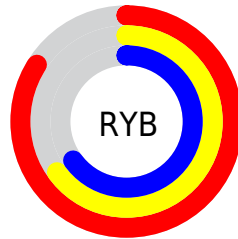
# Distribution



Red (84%)

Green (65%)

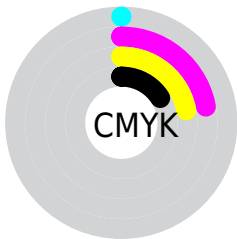
Blue (65%)



Red (84%)

Yellow (65%)

Blue (65%)

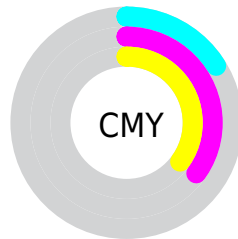


Cyan (0%)

Magenta (22%)

Yellow (22%)

Black (16%)



Cyan (16%)

Magenta (35%)

Yellow (35%)

# Brightness & Saturation Gradients

These gradients show how the Decimal color 14002087 changes by changing the brightness by 10 percent. The first figure shows a shift by +10% for each color and the second figure -10%.

Similar to the brightness gradients but the following saturation gradients show a change of the Decimal color 14002087 by changing the saturation by 10% instead.



 14002087

 14002087

16777215

 12160397

 16768734

 10384243

 16776187

 8608347

 6898243

 5254189

 3675673

 2359296

 0

 14002087

 14002087

 13996690

 14007484

 13991036

 14013138

 13985639

 14018535

 13980242

 14023932

 13974588

 14024703

 13969191

 13963794

 13959168

# Harmonies

## Analogous

The Analogous color harmony consists of three colors that are next to each other on the color wheel.



13674424



14002087



13675161

# Triad

The Triadic color harmony groups three colors that are evenly spaced from another and form a triangle on the color wheel.



14002087



10533277



10073554

# Complementary

The Complementary color scheme is a pair of colors which are on the opposite of each other on the color wheel.



14002087



10999253

# Split Complementary

Split-complementary colors differ from the complementary color scheme. The scheme consists of three colors, the original color and two neighbors of the complement color.



9091531



14002087



9419692

# Square

The Square scheme is like the rectangle color scheme, but the four colors are evenly spaced on the color wheel.



14002087



11777427



8830141



11514065

# Rectangle

The Rectangle color scheme consists of four colors that form a rectangle on the color wheel.



14002087



13217171



8830141



9680849

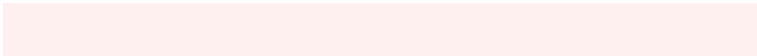


# Sweetspot

The Sweet Spot groups the original color and five complimentary colors.



14002087



16773360



14002133



8419191



0



8421504



# Same Dimension

The Same Dimension uses a secret algorithm to generate beautiful new colors.



14002087



16760253



14007975



7037024



11206656



2818048

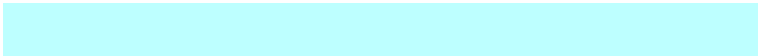


# Inverse Universe

The Inverse Universe completely reimagines the original color for something new.



10999253



12451839



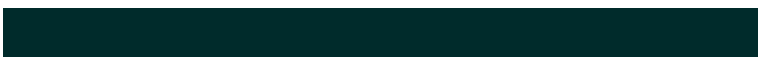
10993365



6318955



43947

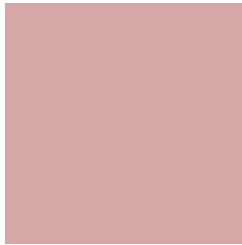


11051



# Previews

## White Background



This preview shows how the Decimal color 14002087 looks on a white background.

## Color Contrast Check

Large Text (above 18pt) WCAG AA × Fail

Any Text WCAG AA × Fail

Large Text (above 18pt) WCAG AAA × Fail

Any Text WCAG AAA × Fail

# Black Background



This preview shows how the Decimal color 14002087 looks on a black background.

## Color Contrast Check

Large Text (above 18pt) WCAG AA ✓ Pass

Any Text WCAG AA ✓ Pass

Large Text (above 18pt) WCAG AAA ✓ Pass

Any Text WCAG AAA ✓ Pass

If you want to check with other color combinations, try the [Color Contrast Checker](#).



## Decimal 14002087 Background



This preview shows how black text looks on a background with the Decimal color 14002087.




This preview shows how white text looks on a background with the Decimal color 14002087.

# Color Blindness Simulation

Color vision deficiency is a very complex topic, and I could not describe the different causes any better than Wikipedia does, so if you want to learn more, you should check out their [article about color blindness](#).

## Dichromacy





**Tritanopia**  
14067122

# Trichromacy



**Original Color**  
14002087

**Protanomaly**  
12758699

**Deuteranomaly**  
13478566

**Tritanomaly**  
14067374

# Monochromacy



**Original Color**  
14002087

**Achromatopsia**  
11908533

**Achromatomaly**  
12693680

# CSS Examples

## Text

The CSS property to change the color of the text to Decimal 14002087 is called "color". The color property can be set on classes, ids or directly on the HTML element.

This example shows how text in the color #D5A7A7 looks like.

```
.text, #text, p{  
    color:#D5A7A7  
}
```

If you want to add a text shadow in that color use the text-shadow property, you can generate a text shadow directly with our [CSS Text Shadow Generator](#).

Here you see how black text with a 4 pixel #D5A7A7 colored shadow looks like.

```
.shadow{ text-shadow: 4px 4px 2px #D5A7A7
}
```

## Border

The CSS property to change the border of an element to Decimal 14002087 is called "border". The border property can be set on classes, ids or directly on the HTML element.

This example shows the color as border, it can be applied via the CSS property "border" or "border-color".

```
.border, #border, table{ border:4px solid
#D5A7A7 }
```

If only the border color should be changed use the property `border-color`.

```
.border{ border-color:#D5A7A7 }
```

If you want to add a box shadow in that color use:

Here you see how a box with a 4 pixel #D5A7A7 colored shadow looks like.

```
.boxshadow{ -moz-box-shadow:4px 4px 4px  
4px #D5A7A7; -webkit-box-shadow:4px 4px  
4px 4px #D5A7A7; box-shadow:4px 4px 4px  
4px #D5A7A7 }
```

# Background

The CSS property to change the background color of an element to Decimal 14002087 is called "background". The background property can be set on classes, ids or directly on the HTML element.

```
.background, #background, body{  
background:#D5A7A7 }
```

If only the background color should be changed can be used:

```
.background{ background-color:#D5A7A7 }
```

This example shows the color as background, it is applied via the CSS property "background".

To optimize and compress your CSS code, you can use our [online CSS compressor and optimizer](#) based on csstidy. If you want to create a linear or radial gradient as background or border, check our [CSS Gradient Generator](#).



Hey! You found this booklet interesting? Support Converting Colors with the new Membership Option!

The pro membership hides all ads, plus gives you double the colors in the color bucket, and more awesome pro features!

**[Learn more, Memberships starting at \\$2.50/m!](#)**

**Follow me  
on Twitter!**

@ConvertingColor