

Converting Colors

Decimal(14002559)

Have a look what the booklet for
Decimal(14002559) contains.

Decimal(14002559)	3
<i>Conversions</i>	4
<i>Details</i>	6
<i>Harmonies</i>	11
<i>Previews</i>	23
<i>Color Blindness Simulation</i>	26
<i>CSS Examples</i>	29

Color

Decimal(14002559)

Conversions

Conversions Part 1

Format	Color
Hex	D5A97F
RGB	213, 169, 127
RGB Percent	84%, 66%, 50%
CMY	0.1647, 0.3373, 0.5020
CMYK	0.00, 0.21, 0.40, 0.16
HSL	29°, 51%, 67%
HSV	29°, 40%, 84%
XYZ	45.4593, 44.0544, 26.1861
YIQ	177.3680, 39.7060, -3.7340

Conversions

Conversions Part 2

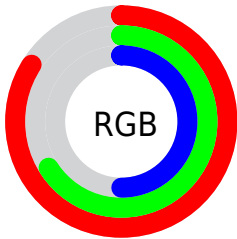
Format	Color
R_{YB}	213, 209, 127
Decimal	14002559
CIE _{Lab}	72.26, 10.57, 27.81
CIE _{LCh}	72, 29.746, 69.191
Yxy	44.0544, 0.3929, 0.3808
Android (android.graphics.Color)	4292192639 (0xFFD5A97F)
YUV	177.3680, -24.8314, 31.2493
Hunter-Lab	66.3735, 6.1014, 23.0700

Details

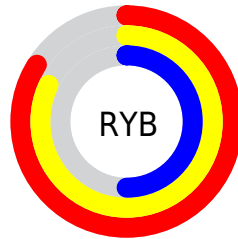
The Decimal color **14002559** is a light color, and the websafe version is hex **CC9966**. A complement of this color would be **8367061**, and the grayscale version is **11711154**.

A 20% lighter version of the original color is **16769204**, and **10319181** is the 20% darker color. If you saturate the color by 10%, you get **13999722**, and if you desaturate by 10%, it is **14005396**.

Distribution



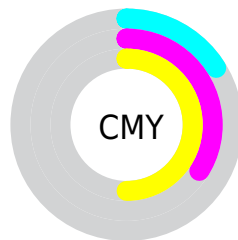
- Red (84%)
- Green (66%)
- Blue (50%)



- Red (84%)
- Yellow (82%)
- Blue (50%)



- Cyan (0%)
- Magenta (21%)
- Yellow (40%)
- Black (16%)



- Cyan (16%)
- Magenta (34%)
- Yellow (50%)

Brightness & Saturation Gradients

These gradients show how the Decimal color 14002559 changes by changing the brightness by 10 percent. The first figure shows a shift by +10% for each color and the second figure -10%.

Similar to the brightness gradients but the following saturation gradients show a change of the Decimal color 14002559 by changing the saturation by 10% instead.

 14002559

 14002559

16777215

 12095334

 16769204

 10319181

 16776656

 8477750

 16777196

 6767904

 5058057

 3414528

 1900544

 0

 14002559

 14002559

 13999722

 14005396

 13996884

 14008234

 13994047

 14011071

 13991210

 14013908

 13988628

 14016490

 13985792

 14019327

 14022143

 14024703

Harmonies

Analogous

The Analogous color harmony consists of three colors that are next to each other on the color wheel.



15049104



14002559



12366459

Triad

The Triadic color harmony groups three colors that are evenly spaced from another and form a triangle on the color wheel.



14002559



6602937



12625883

Complementary

The Complementary color scheme is a pair of colors which are on the opposite of each other on the color wheel.



14002559



8367061

Split Complementary

Split-complementary colors differ from the complementary color scheme. The scheme consists of three colors, the original color and two neighbors of the complement color.



10138086



14002559



6143955

Square

The Square scheme is like the rectangle color scheme, but the four colors are evenly spaced on the color wheel.



14002559



8372125



7649763



14393541

Rectangle

The Rectangle color scheme consists of four colors that form a rectangle on the color wheel.



14002559



11057281



7649763



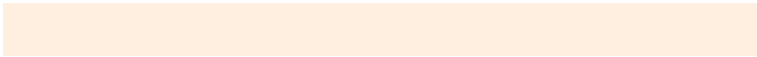
11840225

Sweetspot

The Sweet Spot groups the original color and five complimentary colors.



14002559



16773088



13991851



8418926



0



8421504

Same Dimension

The Same Dimension uses a secret algorithm to generate beautiful new colors.



14002559



16760965



14013567



7038560



11227904



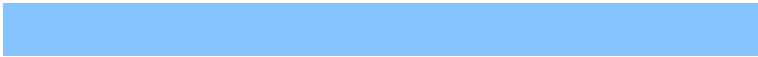
2823424

Inverse Universe

The Inverse Universe completely reimagines the original color for something new.



8367061



8766463



8356053



6317675



22443



5675

Previews

White Background



This preview shows how the Decimal color 14002559 looks on a white background.

Color Contrast Check

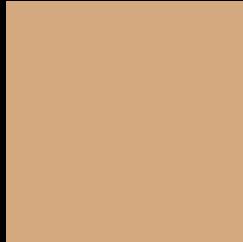
Large Text (above 18pt) WCAG AA × Fail

Any Text WCAG AA × Fail

Large Text (above 18pt) WCAG AAA × Fail

Any Text WCAG AAA × Fail

Black Background



This preview shows how the Decimal color 14002559 looks on a black background.

Color Contrast Check

Large Text (above 18pt) WCAG AA ✓ Pass

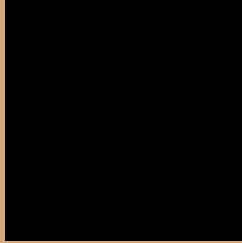
Any Text WCAG AA ✓ Pass

Large Text (above 18pt) WCAG AAA ✓ Pass

Any Text WCAG AAA ✓ Pass

If you want to check with other color combinations, try the [Color Contrast Checker](#).

Decimal 14002559 Background



This preview shows how black text looks on a background with the Decimal color 14002559.




This preview shows how white text looks on a background with the Decimal color 14002559.

Color Blindness Simulation

Color vision deficiency is a very complex topic, and I could not describe the different causes any better than Wikipedia does, so if you want to learn more, you should check out their [article about color blindness](#).

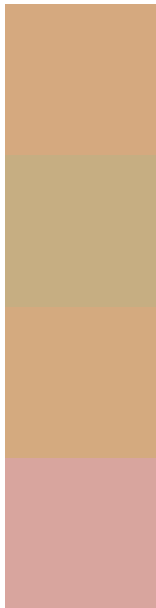
Dichromacy





Tritanopia
14328751

Trichromacy



Original Color
14002559

Protanomaly
13020802

Deuteranomaly
13937279

Tritanomaly
14198174

Monochromacy



Original Color
14002559

Achromatopsia
11645361

Achromatomaly
12496543

CSS Examples

Text

The CSS property to change the color of the text to Decimal 14002559 is called "color". The color property can be set on classes, ids or directly on the HTML element.

This example shows how text in the color #D5A97F looks like.

```
.text, #text, p{  
    color:#D5A97F  
}
```

If you want to add a text shadow in that color use the text-shadow property, you can generate a text shadow directly with our [CSS Text Shadow Generator](#).

Here you see how black text with a 4 pixel #D5A97F colored shadow looks like.

```
.shadow{ text-shadow: 4px 4px 2px #D5A97F
}
```

Border

The CSS property to change the border of an element to Decimal 14002559 is called "border". The border property can be set on classes, ids or directly on the HTML element.

This example shows the color as border, it can be applied via the CSS property "border" or "border-color".

```
.border, #border, table{ border:4px solid
#D5A97F }
```

If only the border color should be changed use the property `border-color`.

```
.border{ border-color:#D5A97F }
```

If you want to add a box shadow in that color use:

Here you see how a box with a 4 pixel #D5A97F colored shadow looks like.

```
.boxshadow{ -moz-box-shadow:4px 4px 4px  
4px #D5A97F; -webkit-box-shadow:4px 4px  
4px 4px #D5A97F; box-shadow:4px 4px 4px  
4px #D5A97F }
```

Background

The CSS property to change the background color of an element to Decimal 14002559 is called "background". The background property can be set on classes, ids or directly on the HTML element.

```
.background, #background, body{  
background:#D5A97F }
```

If only the background color should be changed can be used:

```
.background{ background-color:#D5A97F }
```

This example shows the color as background, it is applied via the CSS property "background".

To optimize and compress your CSS code, you can use our [online CSS compressor and optimizer](#) based on csstidy. If you want to create a linear or radial gradient as background or border, check our [CSS Gradient Generator](#).

Hey! You found this booklet interesting? Support Converting Colors with the new Membership Option!

The pro membership hides all ads, plus gives you double the colors in the color bucket, and more awesome pro features!

[Learn more, Memberships starting at \\$2.50/m!](#)

**Follow me
on Twitter!**

@ConvertingColor