

Converting Colors

Decimal(14002848)

Have a look what the booklet for
Decimal(14002848) contains.

Decimal(14002848)	3
<i>Conversions</i>	4
<i>Details</i>	6
<i>Harmonies</i>	11
<i>Previews</i>	23
<i>Color Blindness Simulation</i>	26
<i>CSS Examples</i>	29

Color

Decimal(14002848)

Conversions

Conversions Part 1

Format	Color
Hex	D5AAA0
RGB	213, 170, 160
RGB Percent	84%, 67%, 63%
CMY	0.1647, 0.3333, 0.3725
CMYK	0.00, 0.20, 0.25, 0.16
HSL	11°, 39%, 73%
HSV	11°, 25%, 84%
XYZ	48.1605, 45.4337, 39.4889
YIQ	181.7170, 28.8380, 6.0060

Conversions

Conversions Part 2

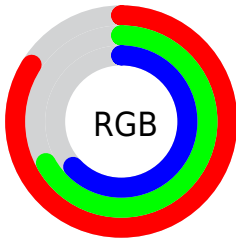
Format	Color
R _Y B	213, 172, 160
Decimal	14002848
CIE Lab	73.18, 14.23, 11.13
CIE LCh	73, 18.066, 38.012
Yxy	45.4337, 0.3619, 0.3414
Android (android.graphics.Color)	4292192928 (0xFFD5AAA0)
YUV	181.7170, -10.7065, 27.4352
Hunter-Lab	67.4045, 9.5803, 12.4481

Details

The Decimal color **14002848** is a light color, and the websafe version is hex **CC9999**. A complement of this color would be **10537941**, and the grayscale version is **11974326**.

A 20% lighter version of the original color is **16769495**, and **10319469** is the 20% darker color. If you saturate the color by 10%, you get **13998475**, and if you desaturate by 10%, it is **14007221**.

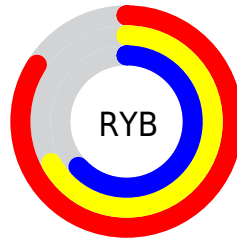
Distribution



Red (84%)

Green (67%)

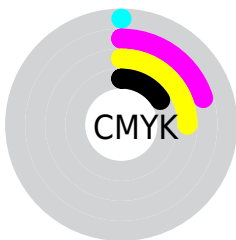
Blue (63%)



Red (84%)

Yellow (67%)

Blue (63%)

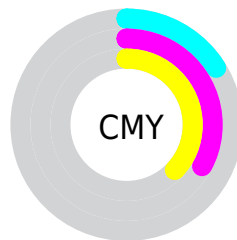


Cyan (0%)

Magenta (20%)

Yellow (25%)

Black (16%)



Cyan (16%)

Magenta (33%)

Yellow (37%)

Brightness & Saturation Gradients

These gradients show how the Decimal color 14002848 changes by changing the brightness by 10 percent. The first figure shows a shift by +10% for each color and the second figure -10%.

Similar to the brightness gradients but the following saturation gradients show a change of the Decimal color 14002848 by changing the saturation by 10% instead.

 14002848

 14002848

16777215

 12160902

 16769495

 10319469

 16776947

 8609108

 6899005

 5254951

 3676435

 2293760

 0

 14002848

 14002848

 13998475

 14007221

 13993845

 14011851

 13989472

 14016224

 13985099

 14020597

 13980726

 14024703

 13976096

 13971723

 13969408

Harmonies

Analogous

The Analogous color harmony consists of three colors that are next to each other on the color wheel.



14067888



14002848



13414037

Triad

The Triadic color harmony groups three colors that are evenly spaced from another and form a triangle on the color wheel.



14002848



9944231



10990804

Complementary

The Complementary color scheme is a pair of colors which are on the opposite of each other on the color wheel.



14002848



10537941

Split Complementary

Split-complementary colors differ from the complementary color scheme. The scheme consists of three colors, the original color and two neighbors of the complement color.



9681362



14002848



9092536

Square

The Square scheme is like the rectangle color scheme, but the four colors are evenly spaced on the color wheel.



14002848



11123097



8961223



12365518

Rectangle

The Rectangle color scheme consists of four colors that form a rectangle on the color wheel.



14002848



12759699



8961223



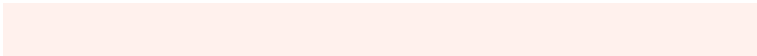
10532308

Sweetspot

The Sweet Spot groups the original color and five complimentary colors.



14002848



16773613



14000331



8419189



0



8421504

Same Dimension

The Same Dimension uses a secret algorithm to generate beautiful new colors.



14002848



16761267



14009504



7037536



11214848



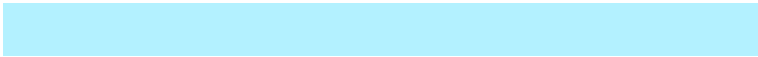
2820096

Inverse Universe

The Inverse Universe completely reimagines the original color for something new.



10537941



11792895



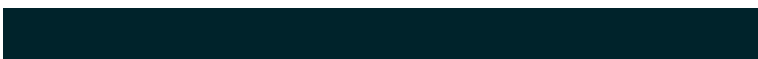
10531285



6318443



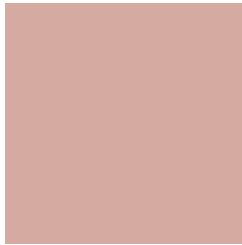
35755



9003

Previews

White Background



This preview shows how the Decimal color 14002848 looks on a white background.

Color Contrast Check

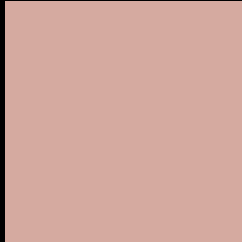
Large Text (above 18pt) WCAG AA × Fail

Any Text WCAG AA × Fail

Large Text (above 18pt) WCAG AAA × Fail

Any Text WCAG AAA × Fail

Black Background



This preview shows how the Decimal color 14002848 looks on a black background.

Color Contrast Check

Large Text (above 18pt) WCAG AA ✓ Pass

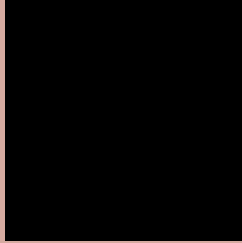
Any Text WCAG AA ✓ Pass

Large Text (above 18pt) WCAG AAA ✓ Pass

Any Text WCAG AAA ✓ Pass

If you want to check with other color combinations, try the [Color Contrast Checker](#).

Decimal 14002848 Background



This preview shows how black text looks on a background with the Decimal color 14002848.



This preview shows how white text looks on a background with the Decimal color 14002848.

Color Blindness Simulation

Color vision deficiency is a very complex topic, and I could not describe the different causes any better than Wikipedia does, so if you want to learn more, you should check out their [article about color blindness](#).

Dichromacy





Tritanopia
14133172

Trichromacy



Original Color
14002848

Protanomaly
12890275

Deuteranomaly
13675679

Tritanomaly
14067885

Monochromacy



Original Color
14002848

Achromatopsia
11974326

Achromatomaly
12694190

CSS Examples

Text

The CSS property to change the color of the text to Decimal 14002848 is called "color". The color property can be set on classes, ids or directly on the HTML element.

This example shows how text in the color #D5AAA0 looks like.

```
.text, #text, p{  
  color:#D5AAA0  
}
```

If you want to add a text shadow in that color use the text-shadow property, you can generate a text shadow directly with our [CSS Text Shadow Generator](#).

Here you see how black text with a 4 pixel #D5AAA0 colored shadow looks like.

```
.shadow{ text-shadow: 4px 4px 2px #D5AAA0
}
```

Border

The CSS property to change the border of an element to Decimal 14002848 is called "border". The border property can be set on classes, ids or directly on the HTML element.

This example shows the color as border, it can be applied via the CSS property "border" or "border-color".

```
.border, #border, table{ border:4px solid
#D5AAA0 }
```

If only the border color should be changed use the property `border-color`.

```
.border{ border-color:#D5AAA0 }
```

If you want to add a box shadow in that color use:

Here you see how a box with a 4 pixel #D5AAA0 colored shadow looks like.

```
.boxshadow{ -moz-box-shadow:4px 4px 4px  
4px #D5AAA0; -webkit-box-shadow:4px 4px  
4px 4px #D5AAA0; box-shadow:4px 4px 4px  
4px #D5AAA0 }
```

Background

The CSS property to change the background color of an element to Decimal 14002848 is called "background". The background property can be set on classes, ids or directly on the HTML element.

```
.background, #background, body{  
background:#D5AAA0 }
```

If only the background color should be changed can be used:

```
.background{ background-color:#D5AAA0 }
```

This example shows the color as background, it is applied via the CSS property "background".

To optimize and compress your CSS code, you can use our [online CSS compressor and optimizer](#) based on csstidy. If you want to create a linear or radial gradient as background or border, check our [CSS Gradient Generator](#).

Hey! You found this booklet interesting? Support Converting Colors with the new Membership Option!

The pro membership hides all ads, plus gives you double the colors in the color bucket, and more awesome pro features!

[Learn more, Memberships starting at \\$2.50/m!](#)

**Follow me
on Twitter!**

@ConvertingColor