

Converting Colors

Decimal(14003341)

Have a look what the booklet for
Decimal(14003341) contains.

Decimal(14003341)	3
<i>Conversions</i>	4
<i>Details</i>	6
<i>Harmonies</i>	11
<i>Previews</i>	23
<i>Color Blindness Simulation</i>	26
<i>CSS Examples</i>	29

Color

Decimal(14003341)

Conversions

Conversions Part 1

Format	Color
Hex	D5AC8D
RGB	213, 172, 141
RGB Percent	84%, 67%, 55%
CMY	0.1647, 0.3255, 0.4471
CMYK	0.00, 0.19, 0.34, 0.16
HSL	26°, 46%, 69%
HSV	26°, 34%, 84%
XYZ	47.0008, 45.5743, 31.5188
YIQ	180.7250, 34.3870, -0.9490

Conversions

Conversions Part 2

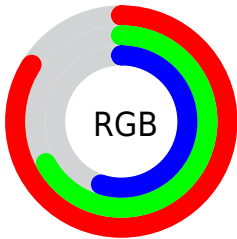
Format	Color
R _Y B	213, 195, 141
Decimal	14003341
CIE Lab	73.27, 10.61, 21.61
CIE LCh	73, 24.074, 63.844
Yxy	45.5743, 0.3788, 0.3673
Android (android.graphics.Color)	4292193421 (0xFFD5AC8D)
YUV	180.7250, -19.5844, 28.3052
Hunter-Lab	67.5087, 6.1347, 19.5745

Details

The Decimal color **14003341** is a light color, and the websafe version is hex **CC9966**. A complement of this color would be **9287381**, and the grayscale version is **11908533**.

A 20% lighter version of the original color is **16769987**, and **10319963** is the 20% darker color. If you saturate the color by 10%, you get **14000248**, and if you desaturate by 10%, it is **14006434**.

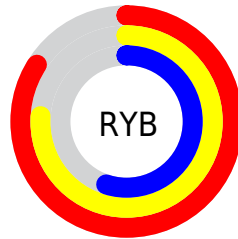
Distribution



Red (84%)

Green (67%)

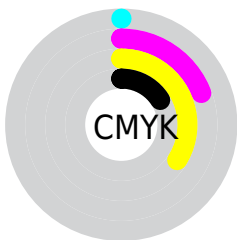
Blue (55%)



Red (84%)

Yellow (76%)

Blue (55%)

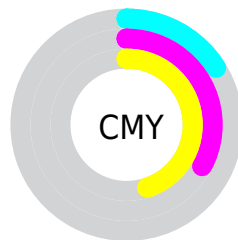


Cyan (0%)

Magenta (19%)

Yellow (34%)

Black (16%)



Cyan (16%)

Magenta (33%)

Yellow (45%)

Brightness & Saturation Gradients

These gradients show how the Decimal color 14003341 changes by changing the brightness by 10 percent. The first figure shows a shift by +10% for each color and the second figure -10%.

Similar to the brightness gradients but the following saturation gradients show a change of the Decimal color 14003341 by changing the saturation by 10% instead.

 14003341

 14003341

16777215

 12161395

 16769987

 10319963

 16777183

 8544067

 16777211

 6833964

 5124375

 3611648

 2032384

 0

 14003341

 14003341

 14000248

 14006434

 13997154

 14009528

 13994061

 14012621

 13990712

 14015970

 13987619

 14019064

 13984525

 14022143

 13982720

 14024703

Harmonies

Analogous

The Analogous color harmony consists of three colors that are next to each other on the color wheel.



14722716



14003341



12759944

Triad

The Triadic color harmony groups three colors that are evenly spaced from another and form a triangle on the color wheel.



14003341



8176054



12299737

Complementary

The Complementary color scheme is a pair of colors which are on the opposite of each other on the color wheel.



14003341



9287381

Split Complementary

Split-complementary colors differ from the complementary color scheme. The scheme consists of three colors, the original color and two neighbors of the complement color.



10335712



14003341



7716812

Square

The Square scheme is like the rectangle color scheme, but the four colors are evenly spaced on the color wheel.



14003341



9486240



8567771



13871048

Rectangle

The Rectangle color scheme consists of four colors that form a rectangle on the color wheel.



14003341



11712651



8567771



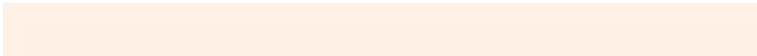
11710684

Sweetspot

The Sweet Spot groups the original color and five complimentary colors.



14003341



16773350



13995447



8419184



0



8421504

Same Dimension

The Same Dimension uses a secret algorithm to generate beautiful new colors.



14003341



16761750



14012301



7038304



11225600



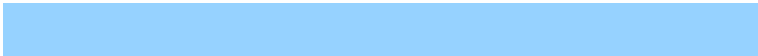
2822912

Inverse Universe

The Inverse Universe completely reimagines the original color for something new.



9287381



9884415



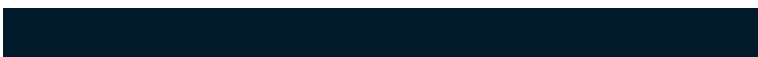
9278421



6317675



25003



6443

Previews

White Background



This preview shows how the Decimal color 14003341 looks on a white background.

Color Contrast Check

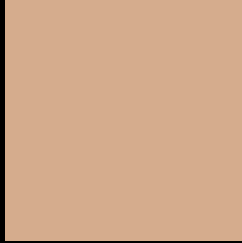
Large Text (above 18pt) WCAG AA × Fail

Any Text WCAG AA × Fail

Large Text (above 18pt) WCAG AAA × Fail

Any Text WCAG AAA × Fail

Black Background



This preview shows how the Decimal color 14003341 looks on a black background.

Color Contrast Check

Large Text (above 18pt) WCAG AA ✓ Pass

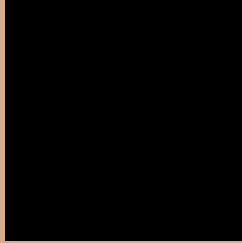
Any Text WCAG AA ✓ Pass

Large Text (above 18pt) WCAG AAA ✓ Pass

Any Text WCAG AAA ✓ Pass

If you want to check with other color combinations, try the [Color Contrast Checker](#).

Decimal 14003341 Background



This preview shows how black text looks on a background with the Decimal color 14003341.



This preview shows how white text looks on a background with the Decimal color 14003341.

Color Blindness Simulation

Color vision deficiency is a very complex topic, and I could not describe the different causes any better than Wikipedia does, so if you want to learn more, you should check out their [article about color blindness](#).

Dichromacy





Tritanopia
14264244

Trichromacy



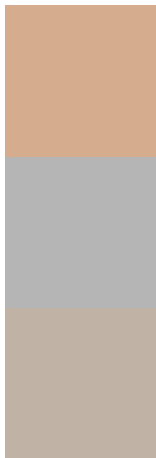
Original Color
14003341

Protanomaly
13087120

Deuteranomaly
13938061

Tritanomaly
14199206

Monochromacy



Original Color
14003341

Achromatopsia
11908533

Achromatomaly
12694182

CSS Examples

Text

The CSS property to change the color of the text to Decimal 14003341 is called "color". The color property can be set on classes, ids or directly on the HTML element.

This example shows how text in the color #D5AC8D looks like.

```
.text, #text, p{  
    color:#D5AC8D  
}
```

If you want to add a text shadow in that color use the text-shadow property, you can generate a text shadow directly with our [CSS Text Shadow Generator](#).

Here you see how black text with a 4 pixel #D5AC8D colored shadow looks like.

```
.shadow{ text-shadow: 4px 4px 2px #D5AC8D
}
```

Border

The CSS property to change the border of an element to Decimal 14003341 is called "border". The border property can be set on classes, ids or directly on the HTML element.

This example shows the color as border, it can be applied via the CSS property "border" or "border-color".

```
.border, #border, table{ border:4px solid
#D5AC8D }
```

If only the border color should be changed use the property `border-color`.

```
.border{ border-color:#D5AC8D }
```

If you want to add a box shadow in that color use:

Here you see how a box with a 4 pixel #D5AC8D colored shadow looks like.

```
.boxshadow{ -moz-box-shadow:4px 4px 4px  
4px #D5AC8D; -webkit-box-shadow:4px 4px  
4px 4px #D5AC8D; box-shadow:4px 4px 4px  
4px #D5AC8D }
```

Background

The CSS property to change the background color of an element to Decimal 14003341 is called "background". The background property can be set on classes, ids or directly on the HTML element.

```
.background, #background, body{  
background:#D5AC8D }
```

If only the background color should be changed can be used:

```
.background{ background-color:#D5AC8D }
```

This example shows the color as background, it is applied via the CSS property "background".

To optimize and compress your CSS code, you can use our [online CSS compressor and optimizer](#) based on csstidy. If you want to create a linear or radial gradient as background or border, check our [CSS Gradient Generator](#).

Hey! You found this booklet interesting? Support Converting Colors with the new Membership Option!

The pro membership hides all ads, plus gives you double the colors in the color bucket, and more awesome pro features!

[Learn more, Memberships starting at \\$2.50/m!](#)

**Follow me
on Twitter!**

@ConvertingColor