

Converting Colors

Decimal(14003854)

Have a look what the booklet for
Decimal(14003854) contains.

Decimal(14003854)	3
<i>Conversions</i>	4
<i>Details</i>	6
<i>Harmonies</i>	11
<i>Previews</i>	23
<i>Color Blindness Simulation</i>	26
<i>CSS Examples</i>	29

Color

Decimal(14003854)

Conversions

Conversions Part 1

Format	Color
Hex	D5AE8E
RGB	213, 174, 142
RGB Percent	84%, 68%, 56%
CMY	0.1647, 0.3176, 0.4431
CMYK	0.00, 0.18, 0.33, 0.16
HSL	27°, 46%, 70%
HSV	27°, 33%, 84%
XYZ	47.4591, 46.3712, 32.0404
YIQ	182.0130, 33.5160, -1.6840

Conversions

Conversions Part 2

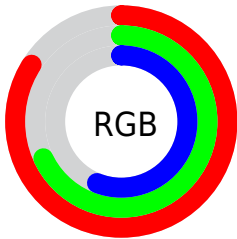
Format	Color
R _Y B	213, 200, 142
Decimal	14003854
CIE Lab	73.79, 9.66, 21.78
CIE LCh	74, 23.823, 66.070
Yxy	46.3712, 0.3770, 0.3684
Android (android.graphics.Color)	4292193934 (0xFFD5AE8E)
YUV	182.0130, -19.7264, 27.1756
Hunter-Lab	68.0964, 5.2350, 19.7707

Details

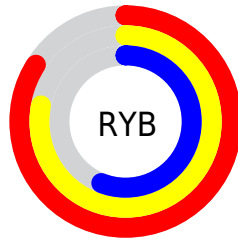
The Decimal color **14003854** is a light color, and the websafe version is hex **CC9966**. A complement of this color would be **9352661**, and the grayscale version is **11974326**.

A 20% lighter version of the original color is **16770500**, and **10320476** is the 20% darker color. If you saturate the color by 10%, you get **14000761**, and if you desaturate by 10%, it is **14006947**.

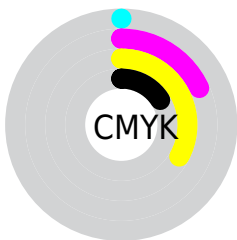
Distribution



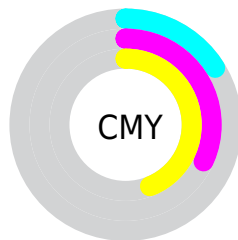
- Red (84%)
- Green (68%)
- Blue (56%)



- Red (84%)
- Yellow (78%)
- Blue (56%)



- Cyan (0%)
- Magenta (18%)
- Yellow (33%)
- Black (16%)



- Cyan (16%)
- Magenta (32%)
- Yellow (44%)

Brightness & Saturation Gradients


These gradients show how the Decimal color 14003854 changes by changing the brightness by 10 percent. The first figure shows a shift by +10% for each color and the second figure -10%.

Similar to the brightness gradients but the following saturation gradients show a change of the Decimal color 14003854 by changing the saturation by 10% instead.

 14003854

 14003854

16777215

 12161908

 16770500

 10320476

 16777184

 8544580

16777213

 6834477

 5190168

 3611904

 2098688

 0

 14003854

 14003854

 14000761

 14006947

 13997923

 14009785

 13994830

 14012878

 13991737

 14015971

 13988644

 14019065

 13985806

 14021887

 13983744

 14024703

Harmonies

Analogous

The Analogous color harmony consists of three colors that are next to each other on the color wheel.



14788765



14003854



12694922

Triad

The Triadic color harmony groups three colors that are evenly spaced from another and form a triangle on the color wheel.



14003854



8241849



12562137

Complementary

The Complementary color scheme is a pair of colors which are on the opposite of each other on the color wheel.



14003854



9352661

Split Complementary

Split-complementary colors differ from the complementary color scheme. The scheme consists of three colors, the original color and two neighbors of the complement color.



10598112



14003854



7848398

Square

The Square scheme is like the rectangle color scheme, but the four colors are evenly spaced on the color wheel.



14003854



9486499



8830173



14002375

Rectangle

The Rectangle color scheme consists of four colors that form a rectangle on the color wheel.



14003854



11647630



8830173



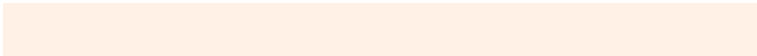
11907548

Sweetspot

The Sweet Spot groups the original color and five complimentary colors.



14003854



16773606



13995701



8419184



0



8421504

Same Dimension

The Same Dimension uses a secret algorithm to generate beautiful new colors.



14003854



16762777



14012814



7038304



11226368



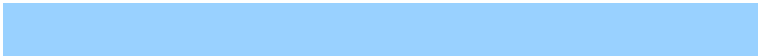
2823168

Inverse Universe

The Inverse Universe completely reimagines the original color for something new.



9352661



10080767



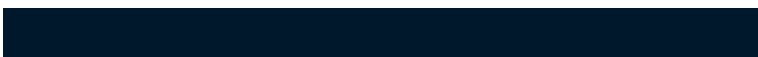
9343701



6317675



24235



6187

Previews

White Background



This preview shows how the Decimal color 14003854 looks on a white background.

Color Contrast Check

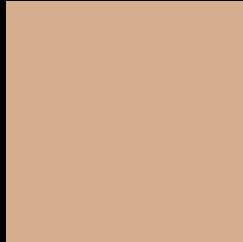
Large Text (above 18pt) WCAG AA × Fail

Any Text WCAG AA × Fail

Large Text (above 18pt) WCAG AAA × Fail

Any Text WCAG AAA × Fail

Black Background



This preview shows how the Decimal color 14003854 looks on a black background.

Color Contrast Check

Large Text (above 18pt) WCAG AA ✓ Pass

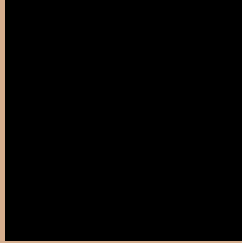
Any Text WCAG AA ✓ Pass

Large Text (above 18pt) WCAG AAA ✓ Pass

Any Text WCAG AAA ✓ Pass

If you want to check with other color combinations, try the [Color Contrast Checker](#).

Decimal 14003854 Background



This preview shows how black text looks on a background with the Decimal color 14003854.



This preview shows how white text looks on a background with the Decimal color 14003854.

Color Blindness Simulation

Color vision deficiency is a very complex topic, and I could not describe the different causes any better than Wikipedia does, so if you want to learn more, you should check out their [article about color blindness](#).

Dichromacy



Original Color
14003854

Protanopia
12694929

Deuteranopia
13938318



Tritanopia
14264758

Trichromacy



Original Color
14003854

Protanomaly
13152912

Deuteranomaly
13938318

Tritanomaly
14199719

Monochromacy



Original Color
14003854

Achromatopsia
11974326

Achromatomaly
12694439

CSS Examples

Text

The CSS property to change the color of the text to Decimal 14003854 is called "color". The color property can be set on classes, ids or directly on the HTML element.

This example shows how text in the color #D5AE8E looks like.

```
.text, #text, p{  
  color:#D5AE8E  
}
```

If you want to add a text shadow in that color use the text-shadow property, you can generate a text shadow directly with our [CSS Text Shadow Generator](#).

Here you see how black text with a 4 pixel #D5AE8E colored shadow looks like.

```
.shadow{ text-shadow: 4px 4px 2px #D5AE8E
}
```

Border

The CSS property to change the border of an element to Decimal 14003854 is called "border". The border property can be set on classes, ids or directly on the HTML element.

This example shows the color as border, it can be applied via the CSS property "border" or "border-color".

```
.border, #border, table{ border:4px solid
#D5AE8E }
```

If only the border color should be changed use the property `border-color`.

```
.border{ border-color:#D5AE8E }
```

If you want to add a box shadow in that color use:

Here you see how a box with a 4 pixel #D5AE8E colored shadow looks like.

```
.boxshadow{ -moz-box-shadow:4px 4px 4px  
4px #D5AE8E; -webkit-box-shadow:4px 4px  
4px 4px #D5AE8E; box-shadow:4px 4px 4px  
4px #D5AE8E }
```

Background

The CSS property to change the background color of an element to Decimal 14003854 is called "background". The background property can be set on classes, ids or directly on the HTML element.

```
.background, #background, body{  
background:#D5AE8E }
```

If only the background color should be changed can be used:

```
.background{ background-color:#D5AE8E }
```

This example shows the color as background, it is applied via the CSS property "background".

To optimize and compress your CSS code, you can use our [online CSS compressor and optimizer](#) based on csstidy. If you want to create a linear or radial gradient as background or border, check our [CSS Gradient Generator](#).

Hey! You found this booklet interesting? Support Converting Colors with the new Membership Option!

The pro membership hides all ads, plus gives you double the colors in the color bucket, and more awesome pro features!

[Learn more, Memberships starting at \\$2.50/m!](#)

**Follow me
on Twitter!**

@ConvertingColor