

# Converting Colors

Decimal(14005170)

Have a look what the booklet for  
Decimal(14005170) contains.

<b>Decimal(14005170)</b> .....	3
<i><b>Conversions</b></i> .....	4
<i><b>Details</b></i> .....	6
<i><b>Harmonies</b></i> .....	11
<i><b>Previews</b></i> .....	23
<i><b>Color Blindness Simulation</b></i> .....	26
<i><b>CSS Examples</b></i> .....	29

# **Color**

**Decimal(14005170)**

# Conversions

## Conversions Part 1

Format	Color
Hex	D5B3B2
RGB	213, 179, 178
RGB Percent	84%, 70%, 70%
CMY	0.1647, 0.2980, 0.3020
CMYK	0.00, 0.16, 0.16, 0.16
HSL	2°, 29%, 77%
HSV	2°, 16%, 84%
XYZ	51.5966, 49.6007, 48.9739
YIQ	189.0520, 20.5850, 6.8970

# Conversions

## Conversions Part 2

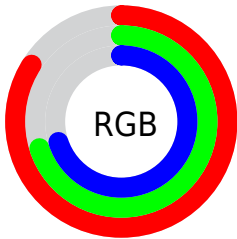
Format	Color
R <sub>Y</sub> B	213, 179, 178
Decimal	14005170
CIE Lab	75.82, 12.09, 5.08
CIE LCh	76, 13.111, 22.791
Yxy	49.6007, 0.3436, 0.3303
Android (android.graphics.Color)	4292195250 (0xFFD5B3B2)
YUV	189.0520, -5.4486, 21.0024
Hunter-Lab	70.4278, 7.5235, 8.0704

# Details

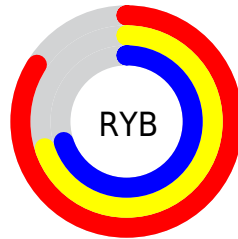
The Decimal color **14005170** is a light color, and the websafe version is hex **CC9999**. A complement of this color would be **11719893**, and the grayscale version is **12434877**.

A 20% lighter version of the original color is **16772074**, and **10387069** is the 20% darker color. If you saturate the color by 10%, you get **13999773**, and if you desaturate by 10%, it is **14010567**.

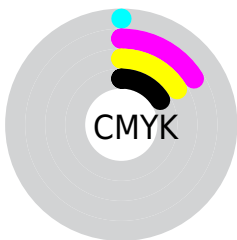
# Distribution



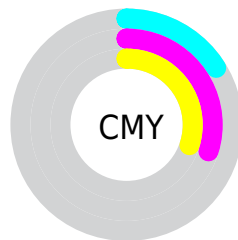
- Red (84%)
- Green (70%)
- Blue (70%)



- Red (84%)
- Yellow (70%)
- Blue (70%)



- Cyan (0%)
- Magenta (16%)
- Yellow (16%)
- Black (16%)



- Cyan (16%)
- Magenta (30%)
- Yellow (30%)

# Brightness & Saturation Gradients

These gradients show how the Decimal color 14005170 changes by changing the brightness by 10 percent. The first figure shows a shift by +10% for each color and the second figure -10%.

Similar to the brightness gradients but the following saturation gradients show a change of the Decimal color 14005170 by changing the saturation by 10% instead.



 14005170

 14005170

16777215

 12163223


 16772074

 10387069

 8676708

 6966605

 5322294

 3809569

 2362121

 0

 14005170

 14005170

 13999773

 14010567

 13994631

 14015709

 13989234

 14021106

 13983837

 14024703

 13978695

 13973298

 13967901

 13962504

 13960704

# Harmonies

## Analogous

The Analogous color harmony consists of three colors that are next to each other on the color wheel.



13808574



14005170



13743528

# Triad

The Triadic color harmony groups three colors that are evenly spaced from another and form a triangle on the color wheel.



14005170



11387052



11255251

# Complementary

The Complementary color scheme is a pair of colors which are on the opposite of each other on the color wheel.



14005170



11719893

# Split Complementary

Split-complementary colors differ from the complementary color scheme. The scheme consists of three colors, the original color and two neighbors of the complement color.



10535118



14005170



10601143

# Square

The Square scheme is like the rectangle color scheme, but the four colors are evenly spaced on the color wheel.



14005170



12303781



10273476



12237265

# Rectangle

The Rectangle color scheme consists of four colors that form a rectangle on the color wheel.



14005170



13351076



10273476



10927826



# Sweetspot

The Sweet Spot groups the original color and five complimentary colors.



14005170



16774130



14004948



8419448



0



8421504



# Same Dimension

The Same Dimension uses a secret algorithm to generate beautiful new colors.



14005170



16764364



14009522



7037280



11207936



2818304



# Inverse Universe

The Inverse Universe completely reimagines the original color for something new.



11719893



13434623



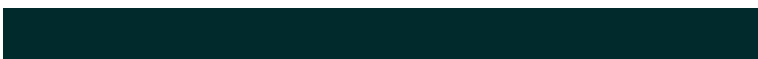
11715541



6318955



42667

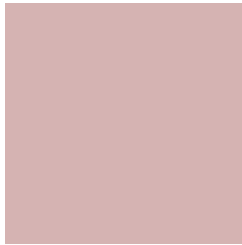


10795



# Previews

## White Background



This preview shows how the Decimal color 14005170 looks on a white background.

## Color Contrast Check

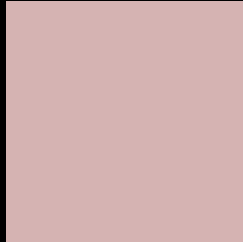
Large Text (above 18pt) WCAG AA × Fail

Any Text WCAG AA × Fail

Large Text (above 18pt) WCAG AAA × Fail

Any Text WCAG AAA × Fail

# Black Background



This preview shows how the Decimal color 14005170 looks on a black background.

## Color Contrast Check

Large Text (above 18pt) WCAG AA ✓ Pass

Any Text WCAG AA ✓ Pass

Large Text (above 18pt) WCAG AAA ✓ Pass

Any Text WCAG AAA ✓ Pass

If you want to check with other color combinations, try the [Color Contrast Checker](#).



## Decimal 14005170 Background



This preview shows how black text looks on a background with the Decimal color 14005170.




This preview shows how white text looks on a background with the Decimal color 14005170.

# Color Blindness Simulation

Color vision deficiency is a very complex topic, and I could not describe the different causes any better than Wikipedia does, so if you want to learn more, you should check out their [article about color blindness](#).

## Dichromacy





**Tritanopia**  
14135743

# Trichromacy



**Original Color**  
14005170

**Protanomaly**  
13154229

**Deuteranomaly**  
13808818

**Tritanomaly**  
14070458

# Monochromacy



**Original Color**  
14005170

**Achromatopsia**  
12434877

**Achromatomaly**  
13023673

# CSS Examples

## Text

The CSS property to change the color of the text to Decimal 14005170 is called "color". The color property can be set on classes, ids or directly on the HTML element.

This example shows how text in the color #D5B3B2 looks like.

```
.text, #text, p{  
    color:#D5B3B2  
}
```

If you want to add a text shadow in that color use the text-shadow property, you can generate a text shadow directly with our [CSS Text Shadow Generator](#).

Here you see how black text with a 4 pixel #D5B3B2 colored shadow looks like.

```
.shadow{ text-shadow: 4px 4px 2px #D5B3B2
}
```

## Border

The CSS property to change the border of an element to Decimal 14005170 is called "border". The border property can be set on classes, ids or directly on the HTML element.

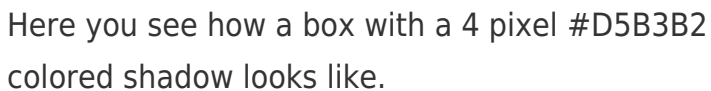
This example shows the color as border, it can be applied via the CSS property "border" or "border-color".

```
.border, #border, table{ border:4px solid
#D5B3B2 }
```

If only the border color should be changed use the property `border-color`.

```
.border{ border-color:#D5B3B2 }
```

If you want to add a box shadow in that color use:



Here you see how a box with a 4 pixel #D5B3B2 colored shadow looks like.

```
.boxshadow{ -moz-box-shadow:4px 4px 4px  
4px #D5B3B2; -webkit-box-shadow:4px 4px  
4px 4px #D5B3B2; box-shadow:4px 4px 4px  
4px #D5B3B2 }
```

# Background

The CSS property to change the background color of an element to Decimal 14005170 is called "background". The background property can be set on classes, ids or directly on the HTML element.

```
.background, #background, body{  
background:#D5B3B2 }
```

If only the background color should be changed can be used:

```
.background{ background-color:#D5B3B2 }
```

This example shows the color as background, it is applied via the CSS property "background".

To optimize and compress your CSS code, you can use our [online CSS compressor and optimizer](#) based on csstidy. If you want to create a linear or radial gradient as background or border, check our [CSS Gradient Generator](#).



Hey! You found this booklet interesting? Support Converting Colors with the new Membership Option!

The pro membership hides all ads, plus gives you double the colors in the color bucket, and more awesome pro features!

**[Learn more, Memberships starting at \\$2.50/m!](#)**

**Follow me  
on Twitter!**

@ConvertingColor