

Converting Colors

Decimal(14005948)

Have a look what the booklet for
Decimal(14005948) contains.

Decimal(14005948)	3
<i>Conversions</i>	4
<i>Details</i>	6
<i>Harmonies</i>	11
<i>Previews</i>	23
<i>Color Blindness Simulation</i>	26
<i>CSS Examples</i>	29

Color

Decimal(14005948)

Conversions

Conversions Part 1

Format	Color
Hex	D5B6BC
RGB	213, 182, 188
RGB Percent	84%, 71%, 74%
CMY	0.1647, 0.2863, 0.2627
CMYK	0.00, 0.15, 0.12, 0.16
HSL	348°, 27%, 77%
HSV	348°, 15%, 84%
XYZ	53.2456, 51.2329, 54.6595
YIQ	191.9530, 16.5500, 8.4380

Conversions

Conversions Part 2

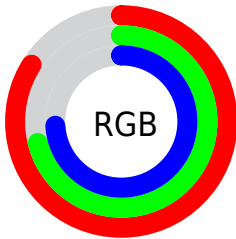
Format	Color
R _Y B	213, 182, 188
Decimal	14005948
CIE Lab	76.82, 12.09, 1.08
CIE LCh	77, 12.141, 5.115
Yxy	51.2329, 0.3346, 0.3219
Android (android.graphics.Color)	4292196028 (0xFFD5B6BC)
YUV	191.9530, -1.9488, 18.4582
Hunter-Lab	71.5771, 7.5246, 4.8275

Details

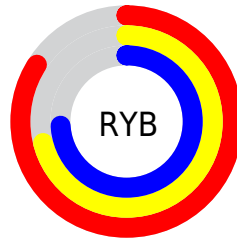
The Decimal color **14005948** is a light color, and the websafe version is hex **FFCCCC**. A complement of this color would be **11982287**, and the grayscale version is **12632256**.

A 20% lighter version of the original color is **16772852**, and **10387847** is the 20% darker color. If you saturate the color by 10%, you get **14000555**, and if you desaturate by 10%, it is **14011341**.

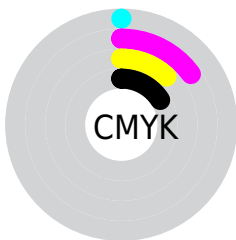
Distribution



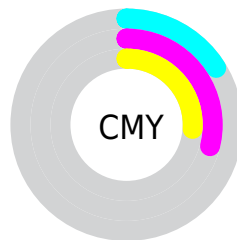
- Red (84%)
- Green (71%)
- Blue (74%)



- Red (84%)
- Yellow (71%)
- Blue (74%)



- Cyan (0%)
- Magenta (15%)
- Yellow (12%)
- Black (16%)



- Cyan (16%)
- Magenta (29%)
- Yellow (26%)

Brightness & Saturation Gradients

These gradients show how the Decimal color 14005948 changes by changing the brightness by 10 percent. The first figure shows a shift by +10% for each color and the second figure -10%.

Similar to the brightness gradients but the following saturation gradients show a change of the Decimal color 14005948 by changing the saturation by 10% instead.

 14005948

 14005948

16777215

 12164001

 16772852

 10387847

 8677486

 6967381

 5388606

 3810088

 2362900

 0

 14005948

 14005948

 14000555

 14011341

 13994906

 14016990

 13989512

 14022384

 13984119

 14024703

 13978726

 13973077

 13967684

 13962291

 13959209

Harmonies

Analogous

The Analogous color harmony consists of three colors that are next to each other on the color wheel.



13547463



14005948



14006193

Triad

The Triadic color harmony groups three colors that are evenly spaced from another and form a triangle on the color wheel.



14005948



12108203



11059666

Complementary

The Complementary color scheme is a pair of colors which are on the opposite of each other on the color wheel.



14005948



11982287

Split Complementary

Split-complementary colors differ from the complementary color scheme. The scheme consists of three colors, the original color and two neighbors of the complement color.



10667210



14005948



11322292

Square

The Square scheme is like the rectangle color scheme, but the four colors are evenly spaced on the color wheel.



14005948



12959143



10732735



11845332

Rectangle

The Rectangle color scheme consists of four colors that form a rectangle on the color wheel.



14005948



13810092



10732735



10863312

Sweetspot

The Sweet Spot groups the original color and five complimentary colors.



14005948



16774647



13612757



8419706



0



8421504

Same Dimension

The Same Dimension uses a secret algorithm to generate beautiful new colors.



14005948



16766172



14008246



7037026



11206689



2818056

Inverse Universe

The Inverse Universe completely reimagines the original color for something new.



14005948



16766172



11979989



7037026



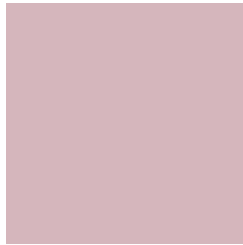
11206689



2818056

Previews

White Background



This preview shows how the Decimal color 14005948 looks on a white background.

Color Contrast Check

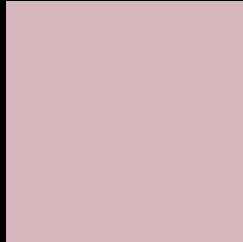
Large Text (above 18pt) WCAG AA × Fail

Any Text WCAG AA × Fail

Large Text (above 18pt) WCAG AAA × Fail

Any Text WCAG AAA × Fail

Black Background



This preview shows how the Decimal color 14005948 looks on a black background.

Color Contrast Check

Large Text (above 18pt) WCAG AA ✓ Pass

Any Text WCAG AA ✓ Pass

Large Text (above 18pt) WCAG AAA ✓ Pass

Any Text WCAG AAA ✓ Pass

If you want to check with other color combinations, try the [Color Contrast Checker](#).

Decimal 14005948 Background



This preview shows how black text looks on a background with the Decimal color 14005948.



This preview shows how white text looks on a background with the Decimal color 14005948.

Color Blindness Simulation

Color vision deficiency is a very complex topic, and I could not describe the different causes any better than Wikipedia does, so if you want to learn more, you should check out their [article about color blindness](#).

Dichromacy





Tritanopia
14071235

Trichromacy



Original Color
14005948

Protanomaly
13155007

Deuteranomaly
13809596

Tritanomaly
14071232

Monochromacy



Original Color
14005948

Achromatopsia
12632256

Achromatomaly
13155519

CSS Examples

Text

The CSS property to change the color of the text to Decimal 14005948 is called "color". The color property can be set on classes, ids or directly on the HTML element.

This example shows how text in the color #D5B6BC looks like.

```
.text, #text, p{  
    color:#D5B6BC  
}
```

If you want to add a text shadow in that color use the text-shadow property, you can generate a text shadow directly with our [CSS Text Shadow Generator](#).

Here you see how black text with a 4 pixel #D5B6BC colored shadow looks like.

```
.shadow{ text-shadow: 4px 4px 2px #D5B6BC  
}
```

Border

The CSS property to change the border of an element to Decimal 14005948 is called "border". The border property can be set on classes, ids or directly on the HTML element.

This example shows the color as border, it can be applied via the CSS property "border" or "border-color".

```
.border, #border, table{ border:4px solid  
#D5B6BC }
```

If only the border color should be changed use the property `border-color`.

```
.border{ border-color:#D5B6BC }
```

If you want to add a box shadow in that color use:

Here you see how a box with a 4 pixel #D5B6BC colored shadow looks like.

```
.boxshadow{ -moz-box-shadow:4px 4px 4px  
4px #D5B6BC; -webkit-box-shadow:4px 4px  
4px 4px #D5B6BC; box-shadow:4px 4px 4px  
4px #D5B6BC }
```

Background

The CSS property to change the background color of an element to Decimal 14005948 is called "background". The background property can be set on classes, ids or directly on the HTML element.

```
.background, #background, body{  
background:#D5B6BC }
```

If only the background color should be changed can be used:

```
.background{ background-color:#D5B6BC }
```

This example shows the color as background, it is applied via the CSS property "background".

To optimize and compress your CSS code, you can use our [online CSS compressor and optimizer](#) based on csstidy. If you want to create a linear or radial gradient as background or border, check our [CSS Gradient Generator](#).

Hey! You found this booklet interesting? Support Converting Colors with the new Membership Option!

The pro membership hides all ads, plus gives you double the colors in the color bucket, and more awesome pro features!

[Learn more, Memberships starting at \\$2.50/m!](#)

**Follow me
on Twitter!**

@ConvertingColor