

Converting Colors

Decimal(14006423)

Have a look what the booklet for
Decimal(14006423) contains.

Decimal(14006423)	3
<i>Conversions</i>	4
<i>Details</i>	6
<i>Harmonies</i>	11
<i>Previews</i>	23
<i>Color Blindness Simulation</i>	26
<i>CSS Examples</i>	29

Color

Decimal(14006423)

Conversions

Conversions Part 1

Format	Color
Hex	D5B897
RGB	213, 184, 151
RGB Percent	84%, 72%, 59%
CMY	0.1647, 0.2784, 0.4078
CMYK	0.00, 0.14, 0.29, 0.16
HSL	32°, 42%, 71%
HSV	32°, 29%, 84%
XYZ	50.1670, 50.6615, 36.4127
YIQ	188.9090, 27.8770, -4.1150

Conversions

Conversions Part 2

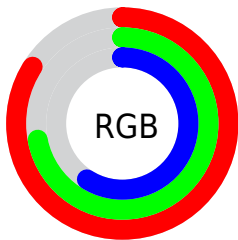
Format	Color
R_{YB}	205, 213, 151
Decimal	14006423
CIE Lab	76.47, 5.48, 20.61
CIE LCh	76, 21.331, 75.104
Yxy	50.6615, 0.3655, 0.3691
Android (android.graphics.Color)	4292196503 (0xFFD5B897)
YUV	188.9090, -18.6891, 21.1278
Hunter-Lab	71.1769, 1.2511, 19.4922

Details

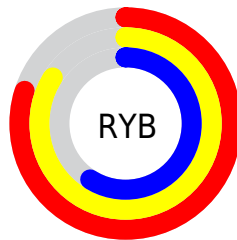
The Decimal color **14006423** is a light color, and the websafe version is hex **CCCC99**. A complement of this color would be **9942229**, and the grayscale version is **12434877**.

A 20% lighter version of the original color is **16773325**, and **10322788** is the 20% darker color. If you saturate the color by 10%, you get **14003842**, and if you desaturate by 10%, it is **14009004**.

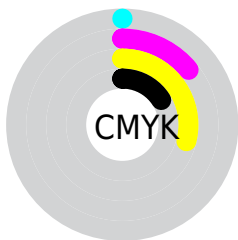
Distribution



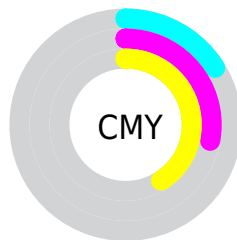
- Red (84%)
- Green (72%)
- Blue (59%)



- Red (80%)
- Yellow (84%)
- Blue (59%)



- Cyan (0%)
- Magenta (14%)
- Yellow (29%)
- Black (16%)



- Cyan (16%)
- Magenta (28%)
- Yellow (41%)

Brightness & Saturation Gradients

These gradients show how the Decimal color 14006423 changes by changing the brightness by 10 percent. The first figure shows a shift by +10% for each color and the second figure -10%.

Similar to the brightness gradients but the following saturation gradients show a change of the Decimal color 14006423 by changing the saturation by 10% instead.

 14006423

 14006423

16777215

 12164477

 16773325

 10322788

 16777194

 8612428

 6902325

 5258015

 3679497

 2167040

 0

 14006423

 14006423

 14003842

 14009004

 14001260

 14011586

 13998679

 14014167

 13996098

 14016748

 13993517

 14019327

 13990935

 14021887

 13988354

 14024447

 13988096

 14024703

Harmonies

Analogous

The Analogous color harmony consists of three colors that are next to each other on the color wheel.



14856866



14006423



12697495

Triad

The Triadic color harmony groups three colors that are evenly spaced from another and form a triangle on the color wheel.



14006423



8964294



13415641

Complementary

The Complementary color scheme is a pair of colors which are on the opposite of each other on the color wheel.



14006423



9942229

Split Complementary

Split-complementary colors differ from the complementary color scheme. The scheme consists of three colors, the original color and two neighbors of the complement color.



11779042



14006423



9029336

Square

The Square scheme is like the rectangle color scheme, but the four colors are evenly spaced on the color wheel.



14006423



9881522



10142178



14594247

Rectangle

The Rectangle color scheme consists of four colors that form a rectangle on the color wheel.



14006423



11715228



10142178



12891869

Sweetspot

The Sweet Spot groups the original color and five complimentary colors.



14006423



16774376



13998005



8419697



0



8421504

Same Dimension

The Same Dimension uses a secret algorithm to generate beautiful new colors.



14006423



16766374



13948311



7038560



11229952



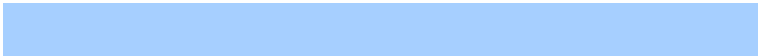
2823936

Inverse Universe

The Inverse Universe completely reimagines the original color for something new.



9942229



10932223



10000341



6317419



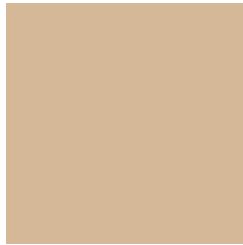
20651



5163

Previews

White Background



This preview shows how the Decimal color 14006423 looks on a white background.

Color Contrast Check

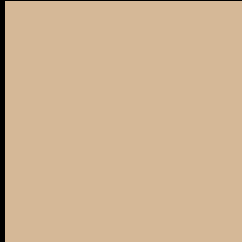
Large Text (above 18pt) WCAG AA × Fail

Any Text WCAG AA × Fail

Large Text (above 18pt) WCAG AAA × Fail

Any Text WCAG AAA × Fail

Black Background



This preview shows how the Decimal color 14006423 looks on a black background.

Color Contrast Check

Large Text (above 18pt) WCAG AA ✓ Pass

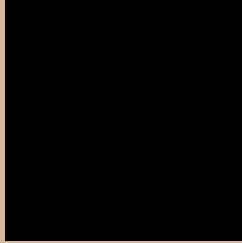
Any Text WCAG AA ✓ Pass

Large Text (above 18pt) WCAG AAA ✓ Pass

Any Text WCAG AAA ✓ Pass

If you want to check with other color combinations, try the [Color Contrast Checker](#).

Decimal 14006423 Background



This preview shows how black text looks on a background with the Decimal color 14006423.




This preview shows how white text looks on a background with the Decimal color 14006423.

Color Blindness Simulation

Color vision deficiency is a very complex topic, and I could not describe the different causes any better than Wikipedia does, so if you want to learn more, you should check out their [article about color blindness](#).

Dichromacy





Tritanopia
14332608

Trichromacy



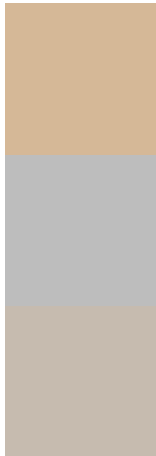
Original Color
14006423

Protanomaly
13482904

Deuteranomaly
14268056

Tritanomaly
14202033

Monochromacy



Original Color
14006423

Achromatopsia
12434877

Achromatomaly
13024175

CSS Examples

Text

The CSS property to change the color of the text to Decimal 14006423 is called "color". The color property can be set on classes, ids or directly on the HTML element.

This example shows how text in the color #D5B897 looks like.

```
.text, #text, p{  
    color:#D5B897  
}
```

If you want to add a text shadow in that color use the text-shadow property, you can generate a text shadow directly with our [CSS Text Shadow Generator](#).

Here you see how black text with a 4 pixel #D5B897 colored shadow looks like.

```
.shadow{ text-shadow: 4px 4px 2px #D5B897
}
```

Border

The CSS property to change the border of an element to Decimal 14006423 is called "border". The border property can be set on classes, ids or directly on the HTML element.

This example shows the color as border, it can be applied via the CSS property "border" or "border-color".

```
.border, #border, table{ border:4px solid
#D5B897 }
```

If only the border color should be changed use the property `border-color`.

```
.border{ border-color:#D5B897 }
```

If you want to add a box shadow in that color use:

Here you see how a box with a 4 pixel #D5B897 colored shadow looks like.

```
.boxshadow{ -moz-box-shadow:4px 4px 4px  
4px #D5B897; -webkit-box-shadow:4px 4px  
4px 4px #D5B897; box-shadow:4px 4px 4px  
4px #D5B897 }
```

Background

The CSS property to change the background color of an element to Decimal 14006423 is called "background". The background property can be set on classes, ids or directly on the HTML element.

```
.background, #background, body{  
background:#D5B897 }
```

If only the background color should be changed can be used:

```
.background{ background-color:#D5B897 }
```

This example shows the color as background, it is applied via the CSS property "background".

To optimize and compress your CSS code, you can use our [online CSS compressor and optimizer](#) based on csstidy. If you want to create a linear or radial gradient as background or border, check our [CSS Gradient Generator](#).

Hey! You found this booklet interesting? Support Converting Colors with the new Membership Option!

The pro membership hides all ads, plus gives you double the colors in the color bucket, and more awesome pro features!

[Learn more, Memberships starting at \\$2.50/m!](#)

**Follow me
on Twitter!**

@ConvertingColor