

Converting Colors

Decimal(14006679)

Have a look what the booklet for
Decimal(14006679) contains.

Decimal(14006679)	3
<i>Conversions</i>	4
<i>Details</i>	6
<i>Harmonies</i>	11
<i>Previews</i>	23
<i>Color Blindness Simulation</i>	26
<i>CSS Examples</i>	29

Color

Decimal(14006679)

Conversions

Conversions Part 1

Format	Color
Hex	D5B997
RGB	213, 185, 151
RGB Percent	84%, 73%, 59%
CMY	0.1647, 0.2745, 0.4078
CMYK	0.00, 0.13, 0.29, 0.16
HSL	33°, 42%, 71%
HSV	33°, 29%, 84%
XYZ	50.3754, 51.0784, 36.4822
YIQ	189.4960, 27.6020, -4.6380

Conversions

Conversions Part 2

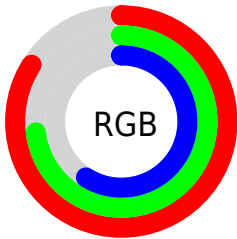
Format	Color
R_{YB}	202, 213, 151
Decimal	14006679
CIE Lab	76.73, 4.95, 20.96
CIE LCh	77, 21.539, 76.709
Yxy	51.0784, 0.3652, 0.3703
Android (android.graphics.Color)	4292196759 (0xFFD5B997)
YUV	189.4960, -18.9785, 20.6130
Hunter-Lab	71.4692, 0.7457, 19.7632

Details

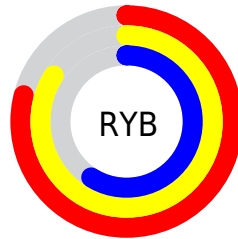
The Decimal color **14006679** is a light color, and the websafe version is hex **CCCC99**. A complement of this color would be **9941973**, and the grayscale version is **12500670**.

A 20% lighter version of the original color is **16773581**, and **10323044** is the 20% darker color. If you saturate the color by 10%, you get **14004098**, and if you desaturate by 10%, it is **14009260**.

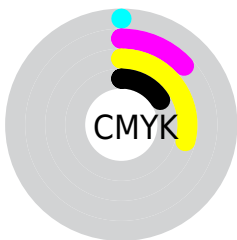
Distribution



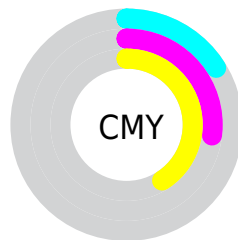
- Red (84%)
- Green (73%)
- Blue (59%)



- Red (79%)
- Yellow (84%)
- Blue (59%)



- Cyan (0%)
- Magenta (13%)
- Yellow (29%)
- Black (16%)



- Cyan (16%)
- Magenta (27%)
- Yellow (41%)

Brightness & Saturation Gradients

These gradients show how the Decimal color 14006679 changes by changing the brightness by 10 percent. The first figure shows a shift by +10% for each color and the second figure -10%.

Similar to the brightness gradients but the following saturation gradients show a change of the Decimal color 14006679 by changing the saturation by 10% instead.

 14006679

 14006679

16777215

 12164733

 16773581

 10323044

 16777194

 8612684

 6902581

 5258271

 3679752

 2167296

 0

 14006679

 14006679

 14004098

 14009260

 14001772

 14011586

 13999191

 14014167

 13996866

 14016492

 13994285

 14019071

 13991703

 14021631

 13989378

 14023935

 13989120

 14024703

Harmonies

Analogous

The Analogous color harmony consists of three colors that are next to each other on the color wheel.



14922657



14006679



12697751

Triad

The Triadic color harmony groups three colors that are evenly spaced from another and form a triangle on the color wheel.



14006679



8964552



13546969

Complementary

The Complementary color scheme is a pair of colors which are on the opposite of each other on the color wheel.



14006679



9941973

Split Complementary

Split-complementary colors differ from the complementary color scheme. The scheme consists of three colors, the original color and two neighbors of the complement color.



11910115



14006679



9095130

Square

The Square scheme is like the rectangle color scheme, but the four colors are evenly spaced on the color wheel.



14006679



9816244



10207972



14725319

Rectangle

The Rectangle color scheme consists of four colors that form a rectangle on the color wheel.



14006679



11715485



10207972



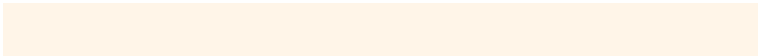
13023197

Sweetspot

The Sweet Spot groups the original color and five complimentary colors.



14006679



16774632



13998004



8419697



0



8421504

Same Dimension

The Same Dimension uses a secret algorithm to generate beautiful new colors.



14006679



16766886



13882775



7038560



11230720



2824192

Inverse Universe

The Inverse Universe completely reimagines the original color for something new.



9941973



10931967



10065877



6317419



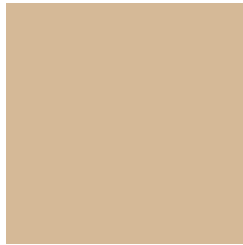
19883



5163

Previews

White Background



This preview shows how the Decimal color 14006679 looks on a white background.

Color Contrast Check

Large Text (above 18pt) WCAG AA × Fail

Any Text WCAG AA × Fail

Large Text (above 18pt) WCAG AAA × Fail

Any Text WCAG AAA × Fail

Black Background



This preview shows how the Decimal color 14006679 looks on a black background.

Color Contrast Check

Large Text (above 18pt) WCAG AA ✓ Pass

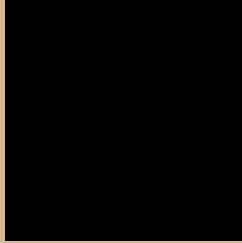
Any Text WCAG AA ✓ Pass

Large Text (above 18pt) WCAG AAA ✓ Pass

Any Text WCAG AAA ✓ Pass

If you want to check with other color combinations, try the [Color Contrast Checker](#).

Decimal 14006679 Background



This preview shows how black text looks on a background with the Decimal color 14006679.



This preview shows how white text looks on a background with the Decimal color 14006679.

Color Blindness Simulation

Color vision deficiency is a very complex topic, and I could not describe the different causes any better than Wikipedia does, so if you want to learn more, you should check out their [article about color blindness](#).


Dichromacy



Original Color
14006679

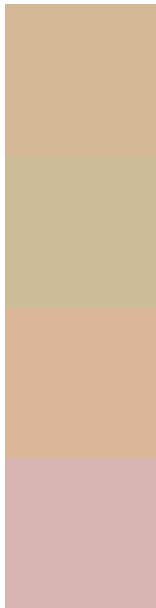
Protanopia
13221273

Deuteranopia
14530200



Tritanopia
14332865

Trichromacy



Original Color
14006679

Protanomaly
13483160

Deuteranomaly
14333848

Tritanomaly
14202290

Monochromacy



Original Color
14006679

Achromatopsia
12434877

Achromatomaly
13024431

CSS Examples

Text

The CSS property to change the color of the text to Decimal 14006679 is called "color". The color property can be set on classes, ids or directly on the HTML element.

This example shows how text in the color #D5B997 looks like.

```
.text, #text, p{  
    color:#D5B997  
}
```

If you want to add a text shadow in that color use the text-shadow property, you can generate a text shadow directly with our [CSS Text Shadow Generator](#).

Here you see how black text with a 4 pixel #D5B997 colored shadow looks like.

```
.shadow{ text-shadow: 4px 4px 2px #D5B997
}
```

Border

The CSS property to change the border of an element to Decimal 14006679 is called "border". The border property can be set on classes, ids or directly on the HTML element.

This example shows the color as border, it can be applied via the CSS property "border" or "border-color".

```
.border, #border, table{ border:4px solid
#D5B997 }
```

If only the border color should be changed use the property `border-color`.

```
.border{ border-color:#D5B997 }
```

If you want to add a box shadow in that color use:

Here you see how a box with a 4 pixel #D5B997 colored shadow looks like.

```
.boxshadow{ -moz-box-shadow:4px 4px 4px  
4px #D5B997; -webkit-box-shadow:4px 4px  
4px 4px #D5B997; box-shadow:4px 4px 4px  
4px #D5B997 }
```

Background

The CSS property to change the background color of an element to Decimal 14006679 is called "background". The background property can be set on classes, ids or directly on the HTML element.

```
.background, #background, body{  
background:#D5B997 }
```

If only the background color should be changed can be used:

```
.background{ background-color:#D5B997 }
```

This example shows the color as background, it is applied via the CSS property "background".

To optimize and compress your CSS code, you can use our [online CSS compressor and optimizer](#) based on csstidy. If you want to create a linear or radial gradient as background or border, check our [CSS Gradient Generator](#).

Hey! You found this booklet interesting? Support Converting Colors with the new Membership Option!

The pro membership hides all ads, plus gives you double the colors in the color bucket, and more awesome pro features!

[Learn more, Memberships starting at \\$2.50/m!](#)

**Follow me
on Twitter!**

@ConvertingColor