

Converting Colors

Decimal(14006698)

Have a look what the booklet for
Decimal(14006698) contains.

Decimal(14006698)	3
<i>Conversions</i>	4
<i>Details</i>	6
<i>Harmonies</i>	11
<i>Previews</i>	23
<i>Color Blindness Simulation</i>	26
<i>CSS Examples</i>	29

Color

Decimal(14006698)

Conversions

Conversions Part 1

Format	Color
Hex	D5B9AA
RGB	213, 185, 170
RGB Percent	84%, 73%, 67%
CMY	0.1647, 0.2745, 0.3333
CMYK	0.00, 0.13, 0.20, 0.16
HSL	21°, 34%, 75%
HSV	21°, 20%, 84%
XYZ	52.0452, 51.7463, 45.2752
YIQ	191.6620, 21.5030, 1.2710

Conversions

Conversions Part 2

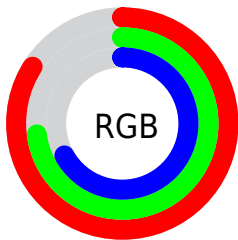
Format	Color
R _Y B	213, 193, 170
Decimal	14006698
CIE Lab	77.13, 7.64, 11.29
CIE LCh	77, 13.631, 55.912
Yxy	51.7463, 0.3491, 0.3471
Android (android.graphics.Color)	4292196778 (0xFFD5B9AA)
YUV	191.6620, -10.6794, 18.7134
Hunter-Lab	71.9349, 3.2594, 13.0379

Details

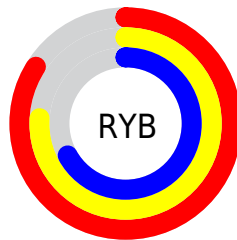
The Decimal color **14006698** is a light color, and the websafe version is hex **CCCCCC**. A complement of this color would be **11192021**, and the grayscale version is **12632256**.

A 20% lighter version of the original color is **16773601**, and **10388598** is the 20% darker color. If you saturate the color by 10%, you get **14003093**, and if you desaturate by 10%, it is **14010303**.

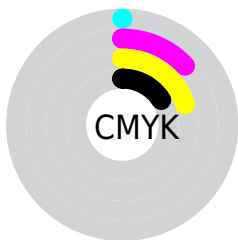
Distribution



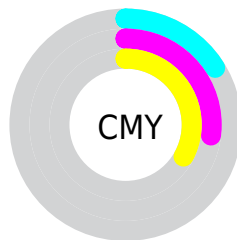
- Red (84%)
- Green (73%)
- Blue (67%)



- Red (84%)
- Yellow (76%)
- Blue (67%)



- Cyan (0%)
- Magenta (13%)
- Yellow (20%)
- Black (16%)



- Cyan (16%)
- Magenta (27%)
- Yellow (33%)

Brightness & Saturation Gradients

These gradients show how the Decimal color 14006698 changes by changing the brightness by 10 percent. The first figure shows a shift by +10% for each color and the second figure -10%.

Similar to the brightness gradients but the following saturation gradients show a change of the Decimal color 14006698 by changing the saturation by 10% instead.

 14006698

 14006698

16777215

 12164752

 16773601

 10388598

16777214

 8612701

 6968134

 5323567

 3745306

 2363648

 0

 14006698

 14006698

14003093

14010303

13999487

14013909

13995882

14017514

13992533

14020863

13988927

14024447

13985322

14024703

13981717

13978112

Harmonies

Analogous

The Analogous color harmony consists of three colors that are next to each other on the color wheel.



14333620



14006698



13352357

Triad

The Triadic color harmony groups three colors that are evenly spaced from another and form a triangle on the color wheel.



14006698



10733244



12565717

Complementary

The Complementary color scheme is a pair of colors which are on the opposite of each other on the color wheel.



14006698



11192021

Split Complementary

Split-complementary colors differ from the complementary color scheme. The scheme consists of three colors, the original color and two neighbors of the complement color.



11518167



14006698



10405577

Square

The Square scheme is like the rectangle color scheme, but the four colors are evenly spaced on the color wheel.



14006698



11453616



10732755



13482189

Rectangle

The Rectangle color scheme consists of four colors that form a rectangle on the color wheel.



14006698



12763302



10732755



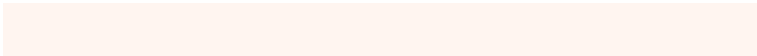
12172759

Sweetspot

The Sweet Spot groups the original color and five complimentary colors.



14006698



16774640



14002887



8419959



0



8421504

Same Dimension

The Same Dimension uses a secret algorithm to generate beautiful new colors.



14006698



16766914



14012074



7038048



11222016



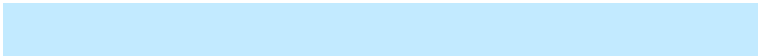
2821888

Inverse Universe

The Inverse Universe completely reimagines the original color for something new.



11192021



12774143



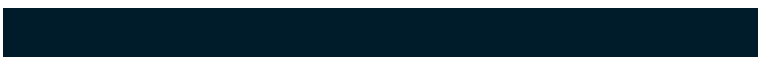
11186645



6317931



28587



7211

Previews

White Background



This preview shows how the Decimal color 14006698 looks on a white background.

Color Contrast Check

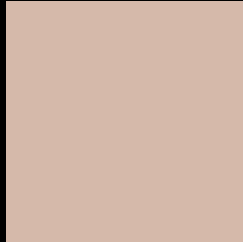
Large Text (above 18pt) WCAG AA × Fail

Any Text WCAG AA × Fail

Large Text (above 18pt) WCAG AAA × Fail

Any Text WCAG AAA × Fail

Black Background



This preview shows how the Decimal color 14006698 looks on a black background.

Color Contrast Check

Large Text (above 18pt) WCAG AA ✓ Pass

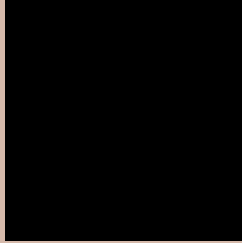
Any Text WCAG AA ✓ Pass

Large Text (above 18pt) WCAG AAA ✓ Pass

Any Text WCAG AAA ✓ Pass

If you want to check with other color combinations, try the [Color Contrast Checker](#).

Decimal 14006698 Background



This preview shows how black text looks on a background with the Decimal color 14006698.



This preview shows how white text looks on a background with the Decimal color 14006698.

Color Blindness Simulation

Color vision deficiency is a very complex topic, and I could not describe the different causes any better than Wikipedia does, so if you want to learn more, you should check out their [article about color blindness](#).

Dichromacy



Original Color
14006698

Protanopia
13024941

Deuteranopia
14203050



Tritanopia
14202307

Trichromacy



Original Color
14006698

Protanomaly
13352108

Deuteranomaly
14137514

Tritanomaly
14137018

Monochromacy



Original Color
14006698

Achromatopsia
12632256

Achromatomaly
13155768

CSS Examples

Text

The CSS property to change the color of the text to Decimal 14006698 is called "color". The color property can be set on classes, ids or directly on the HTML element.

This example shows how text in the color #D5B9AA looks like.

```
.text, #text, p{  
    color:#D5B9AA  
}
```

If you want to add a text shadow in that color use the text-shadow property, you can generate a text shadow directly with our [CSS Text Shadow Generator](#).

Here you see how black text with a 4 pixel #D5B9AA colored shadow looks like.

```
.shadow{ text-shadow: 4px 4px 2px #D5B9AA
}
```

Border

The CSS property to change the border of an element to Decimal 14006698 is called "border". The border property can be set on classes, ids or directly on the HTML element.

This example shows the color as border, it can be applied via the CSS property "border" or "border-color".

```
.border, #border, table{ border:4px solid
#D5B9AA }
```

If only the border color should be changed use the property `border-color`.

```
.border{ border-color:#D5B9AA }
```

If you want to add a box shadow in that color use:

Here you see how a box with a 4 pixel #D5B9AA colored shadow looks like.

```
.boxshadow{ -moz-box-shadow:4px 4px 4px  
4px #D5B9AA; -webkit-box-shadow:4px 4px  
4px 4px #D5B9AA; box-shadow:4px 4px 4px  
4px #D5B9AA }
```

Background

The CSS property to change the background color of an element to Decimal 14006698 is called "background". The background property can be set on classes, ids or directly on the HTML element.

```
.background, #background, body{  
background:#D5B9AA }
```

If only the background color should be changed can be used:

```
.background{ background-color:#D5B9AA }
```

This example shows the color as background, it is applied via the CSS property "background".

To optimize and compress your CSS code, you can use our [online CSS compressor and optimizer](#) based on csstidy. If you want to create a linear or radial gradient as background or border, check our [CSS Gradient Generator](#).

Hey! You found this booklet interesting? Support Converting Colors with the new Membership Option!

The pro membership hides all ads, plus gives you double the colors in the color bucket, and more awesome pro features!

[Learn more, Memberships starting at \\$2.50/m!](#)

**Follow me
on Twitter!**

@ConvertingColor