

Converting Colors

Decimal(14006975)

Have a look what the booklet for
Decimal(14006975) contains.

Decimal(14006975)	3
<i>Conversions</i>	4
<i>Details</i>	6
<i>Harmonies</i>	11
<i>Previews</i>	23
<i>Color Blindness Simulation</i>	26
<i>CSS Examples</i>	29

Color

Decimal(14006975)

Conversions

Conversions Part 1

Format	Color
Hex	D5BABF
RGB	213, 186, 191
RGB Percent	84%, 73%, 75%
CMY	0.1647, 0.2706, 0.2510
CMYK	0.00, 0.13, 0.10, 0.16
HSL	349°, 24%, 78%
HSV	349°, 13%, 84%
XYZ	54.4034, 53.0255, 56.6578
YIQ	194.6430, 14.4870, 7.2790

Conversions

Conversions Part 2

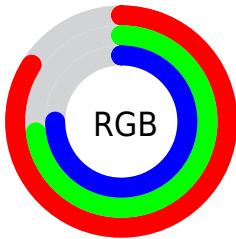
Format	Color
RYB	213, 186, 191
Decimal	14006975
CIELab	77.89, 10.45, 1.01
CIElCh	78, 10.495, 5.543
Yxy	53.0255, 0.3316, 0.3232
Android (android.graphics.Color)	4292197055 (0xFFD5BABF)
YUV	194.6430, -1.7960, 16.0991
Hunter-Lab	72.8186, 5.9263, 4.8414

Details

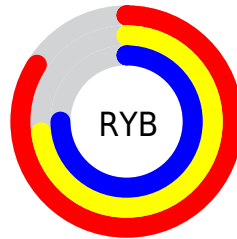
The Decimal color **14006975** is a light color, and the websafe version is hex **CCCCCC**. A complement of this color would be **12244432**, and the grayscale version is **12829635**.

A 20% lighter version of the original color is **16773879**, and **10388874** is the 20% darker color. If you saturate the color by 10%, you get **14001582**, and if you desaturate by 10%, it is **14012368**.

Distribution



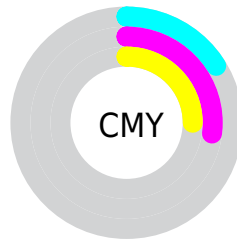
- Red (84%)
- Green (73%)
- Blue (75%)



- Red (84%)
- Yellow (73%)
- Blue (75%)



- Cyan (0%)
- Magenta (13%)
- Yellow (10%)
- Black (16%)



- Cyan (16%)
- Magenta (27%)
- Yellow (25%)

Brightness & Saturation Gradients

These gradients show how the Decimal color 14006975 changes by changing the brightness by 10 percent. The first figure shows a shift by +10% for each color and the second figure -10%.

Similar to the brightness gradients but the following saturation gradients show a change of the Decimal color 14006975 by changing the saturation by 10% instead.

 14006975

 14006975

16777215

 12165028

 16773879

 10388874

 8678512

 7033688

 5389377

 3876395

 2429462

 262144

 0

 14006975

 14006975

 14001582

 14012368

 13995932

 14018018

 13990539

 14023411

 13985146

 14024703

 13979496

 13974103

 13968710

 13963316

 13959207

Harmonies

Analogous

The Analogous color harmony consists of three colors that are next to each other on the color wheel.



13614025



14006975



14007222

Triad

The Triadic color harmony groups three colors that are evenly spaced from another and form a triangle on the color wheel.



14006975



12370865



11453650

Complementary

The Complementary color scheme is a pair of colors which are on the opposite of each other on the color wheel.



14006975



12244432

Split Complementary

Split-complementary colors differ from the complementary color scheme. The scheme consists of three colors, the original color and two neighbors of the complement color.



11126475



14006975



11650744

Square

The Square scheme is like the rectangle color scheme, but the four colors are evenly spaced on the color wheel.



14006975



13090989



11192002



12173780

Rectangle

The Rectangle color scheme consists of four colors that form a rectangle on the color wheel.



14006975



13810865



11192002



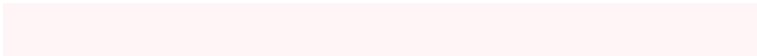
11322832

Sweetspot

The Sweet Spot groups the original color and five complimentary colors.



14006975



16774647



13679317



8419706



0



8421504

Same Dimension

The Same Dimension uses a secret algorithm to generate beautiful new colors.



14006975



16767456



14009018



7037026



11206688



2818056

Inverse Universe

The Inverse Universe completely reimagines the original color for something new.



14006975



16767456



12242389



7037026



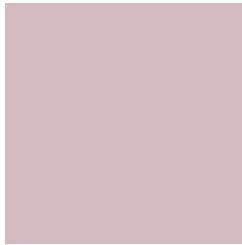
11206688



2818056

Previews

White Background



This preview shows how the Decimal color 14006975 looks on a white background.

Color Contrast Check

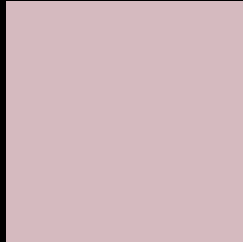
Large Text (above 18pt) WCAG AA × Fail

Any Text WCAG AA × Fail

Large Text (above 18pt) WCAG AAA × Fail

Any Text WCAG AAA × Fail

Black Background



This preview shows how the Decimal color 14006975 looks on a black background.

Color Contrast Check

Large Text (above 18pt) WCAG AA ✓ Pass

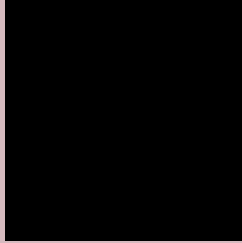
Any Text WCAG AA ✓ Pass

Large Text (above 18pt) WCAG AAA ✓ Pass

Any Text WCAG AAA ✓ Pass

If you want to check with other color combinations, try the [Color Contrast Checker](#).

Decimal 14006975 Background



This preview shows how black text looks on a background with the Decimal color 14006975.



This preview shows how white text looks on a background with the Decimal color 14006975.

Color Blindness Simulation

Color vision deficiency is a very complex topic, and I could not describe the different causes any better than Wikipedia does, so if you want to learn more, you should check out their [article about color blindness](#).

Dichromacy





Tritanopia
14072263

Trichromacy



Original Color
14006975

Protanomaly
13287105

Deuteranomaly
13941439

Tritanomaly
14072260

Monochromacy



Original Color
14006975

Achromatopsia
12829635

Achromatomaly
13287618

CSS Examples

Text

The CSS property to change the color of the text to Decimal 14006975 is called "color". The color property can be set on classes, ids or directly on the HTML element.

This example shows how text in the color #D5BABF looks like.

```
.text, #text, p{  
    color:#D5BABF  
}
```

If you want to add a text shadow in that color use the text-shadow property, you can generate a text shadow directly with our [CSS Text Shadow Generator](#).

Here you see how black text with a 4 pixel #D5BABF colored shadow looks like.

```
.shadow{ text-shadow: 4px 4px 2px #D5BABF
}
```

Border

The CSS property to change the border of an element to Decimal 14006975 is called "border". The border property can be set on classes, ids or directly on the HTML element.

This example shows the color as border, it can be applied via the CSS property "border" or "border-color".

```
.border, #border, table{ border:4px solid
#D5BABF }
```

If only the border color should be changed use the property `border-color`.

```
.border{ border-color:#D5BABF }
```

If you want to add a box shadow in that color use:

Here you see how a box with a 4 pixel #D5BABF colored shadow looks like.

```
.boxshadow{ -moz-box-shadow:4px 4px 4px  
4px #D5BABF; -webkit-box-shadow:4px 4px  
4px 4px #D5BABF; box-shadow:4px 4px 4px  
4px #D5BABF }
```

Background

The CSS property to change the background color of an element to Decimal 14006975 is called "background". The background property can be set on classes, ids or directly on the HTML element.

```
.background, #background, body{  
background:#D5BABF }
```

If only the background color should be changed can be used:

```
.background{ background-color:#D5BABF }
```

This example shows the color as background, it is applied via the CSS property "background".

To optimize and compress your CSS code, you can use our [online CSS compressor and optimizer](#) based on csstidy. If you want to create a linear or radial gradient as background or border, check our [CSS Gradient Generator](#).

Hey! You found this booklet interesting? Support Converting Colors with the new Membership Option!

The pro membership hides all ads, plus gives you double the colors in the color bucket, and more awesome pro features!

[Learn more, Memberships starting at \\$2.50/m!](#)

**Follow me
on Twitter!**

@ConvertingColor