

Converting Colors

Decimal(14007475)

Have a look what the booklet for
Decimal(14007475) contains.

Decimal(14007475)	3
<i>Conversions</i>	4
<i>Details</i>	6
<i>Harmonies</i>	11
<i>Previews</i>	23
<i>Color Blindness Simulation</i>	26
<i>CSS Examples</i>	29

Color

Decimal(14007475)

Conversions

Conversions Part 1

Format	Color
Hex	D5BCB3
RGB	213, 188, 179
RGB Percent	84%, 74%, 70%
CMY	0.1647, 0.2627, 0.2980
CMYK	0.00, 0.12, 0.16, 0.16
HSL	16°, 29%, 77%
HSV	16°, 16%, 84%
XYZ	53.5605, 53.3672, 50.1258
YIQ	194.4490, 17.7890, 2.5010

Conversions

Conversions Part 2

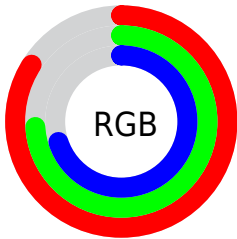
Format	Color
R _Y B	213, 191, 179
Decimal	14007475
CIE Lab	78.09, 7.42, 7.80
CIE LCh	78, 10.765, 46.407
Yxy	53.3672, 0.3410, 0.3398
Android (android.graphics.Color)	4292197555 (0xFFD5BCB3)
YUV	194.4490, -7.6164, 16.2692
Hunter-Lab	73.0529, 3.0290, 10.4547

Details

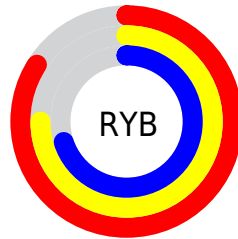
The Decimal color **14007475** is a light color, and the websafe version is hex **CCCCCC**. A complement of this color would be **11783381**, and the grayscale version is **12829635**.

A 20% lighter version of the original color is **16774379**, and **10389374** is the 20% darker color. If you saturate the color by 10%, you get **14003358**, and if you desaturate by 10%, it is **14011592**.

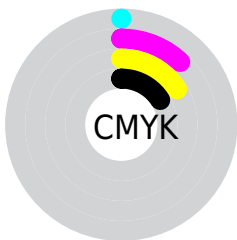
Distribution



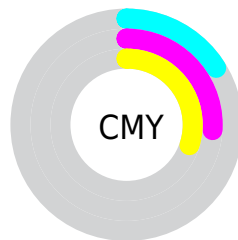
- Red (84%)
- Green (74%)
- Blue (70%)



- Red (84%)
- Yellow (75%)
- Blue (70%)



- Cyan (0%)
- Magenta (12%)
- Yellow (16%)
- Black (16%)



- Cyan (16%)
- Magenta (26%)
- Yellow (30%)

Brightness & Saturation Gradients

These gradients show how the Decimal color 14007475 changes by changing the brightness by 10 percent. The first figure shows a shift by +10% for each color and the second figure -10%.

Similar to the brightness gradients but the following saturation gradients show a change of the Decimal color 14007475 by changing the saturation by 10% instead.

■ 14007475

■ 14007475

16777215

■ 12165528

■ 16774379

■ 10389374

■ 8678757

■ 6968653

■ 5389879

■ 3811361

■ 2364427

■ 0

■ 14007475

■ 14007475

 14003358

 14011592

 13999496

 14015454

 13995379

 14019571

 13991262

 14023679

 13987400

 14024703

 13983283

 13979166

 13975305

 13973504

Harmonies

Analogous

The Analogous color harmony consists of three colors that are next to each other on the color wheel.



14138044



14007475



13549486

Triad

The Triadic color harmony groups three colors that are evenly spaced from another and form a triangle on the color wheel.



14007475



11454396



12501204

Complementary

The Complementary color scheme is a pair of colors which are on the opposite of each other on the color wheel.



14007475



11783381

Split Complementary

Split-complementary colors differ from the complementary color scheme. The scheme consists of three colors, the original color and two neighbors of the complement color.



11715540



14007475



11126726

Square

The Square scheme is like the rectangle color scheme, but the four colors are evenly spaced on the color wheel.



14007475



12109235



11192015



13286863

Rectangle

The Rectangle color scheme consists of four colors that form a rectangle on the color wheel.



14007475



13091245



11192015



12173781

Sweetspot

The Sweet Spot groups the original color and five complimentary colors.



14007475



16774898



14005197



8419960



0



8421504

Same Dimension

The Same Dimension uses a secret algorithm to generate beautiful new colors.



14007475



16767951



14011827



7037792



11218176



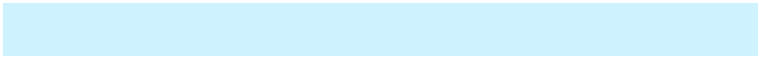
2820864

Inverse Universe

The Inverse Universe completely reimagines the original color for something new.



11783381



13628159



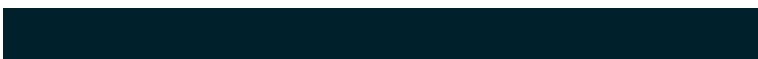
11779029



6318187



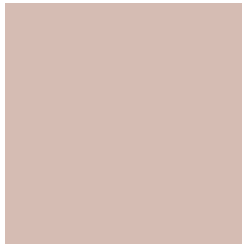
32427



8235

Previews

White Background



This preview shows how the Decimal color 14007475 looks on a white background.

Color Contrast Check

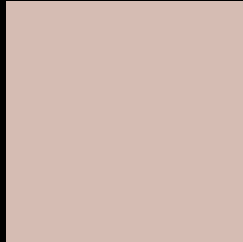
Large Text (above 18pt) WCAG AA × Fail

Any Text WCAG AA × Fail

Large Text (above 18pt) WCAG AAA × Fail

Any Text WCAG AAA × Fail

Black Background



This preview shows how the Decimal color 14007475 looks on a black background.

Color Contrast Check

Large Text (above 18pt) WCAG AA ✓ Pass

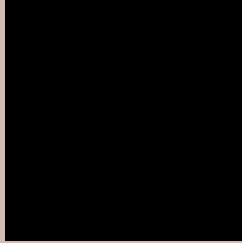
Any Text WCAG AA ✓ Pass

Large Text (above 18pt) WCAG AAA ✓ Pass

Any Text WCAG AAA ✓ Pass

If you want to check with other color combinations, try the [Color Contrast Checker](#).

Decimal 14007475 Background



This preview shows how black text looks on a background with the Decimal color 14007475.



This preview shows how white text looks on a background with the Decimal color 14007475.

Color Blindness Simulation

Color vision deficiency is a very complex topic, and I could not describe the different causes any better than Wikipedia does, so if you want to learn more, you should check out their [article about color blindness](#).


Dichromacy



Original Color
14007475

Protanopia
13090997

Deuteranopia
14269107



Tritanopia
14203335

Trichromacy



Original Color
14007475

Protanomaly
13418420

Deuteranomaly
14203827

Tritanomaly
14138048

Monochromacy



Original Color
14007475

Achromatopsia
12763842

Achromatomaly
13222077

CSS Examples

Text

The CSS property to change the color of the text to Decimal 14007475 is called "color". The color property can be set on classes, ids or directly on the HTML element.

This example shows how text in the color #D5BCB3 looks like.

```
.text, #text, p{  
    color:#D5BCB3  
}
```

If you want to add a text shadow in that color use the text-shadow property, you can generate a text shadow directly with our [CSS Text Shadow Generator](#).

Here you see how black text with a 4 pixel #D5BCB3 colored shadow looks like.

```
.shadow{ text-shadow: 4px 4px 2px #D5BCB3
}
```

Border

The CSS property to change the border of an element to Decimal 14007475 is called "border". The border property can be set on classes, ids or directly on the HTML element.

This example shows the color as border, it can be applied via the CSS property "border" or "border-color".

```
.border, #border, table{ border:4px solid
#D5BCB3 }
```

If only the border color should be changed use the property `border-color`.

```
.border{ border-color:#D5BCB3 }
```

If you want to add a box shadow in that color use:

Here you see how a box with a 4 pixel #D5BCB3 colored shadow looks like.

```
.boxshadow{ -moz-box-shadow:4px 4px 4px  
4px #D5BCB3; -webkit-box-shadow:4px 4px  
4px 4px #D5BCB3; box-shadow:4px 4px 4px  
4px #D5BCB3 }
```

Background

The CSS property to change the background color of an element to Decimal 14007475 is called "background". The background property can be set on classes, ids or directly on the HTML element.

```
.background, #background, body{  
background:#D5BCB3 }
```

If only the background color should be changed can be used:

```
.background{ background-color:#D5BCB3 }
```

This example shows the color as background, it is applied via the CSS property "background".

To optimize and compress your CSS code, you can use our [online CSS compressor and optimizer](#) based on csstidy. If you want to create a linear or radial gradient as background or border, check our [CSS Gradient Generator](#).

Hey! You found this booklet interesting? Support Converting Colors with the new Membership Option!

The pro membership hides all ads, plus gives you double the colors in the color bucket, and more awesome pro features!

[Learn more, Memberships starting at \\$2.50/m!](#)

**Follow me
on Twitter!**

@ConvertingColor