

Converting Colors

Decimal(14007741)

Have a look what the booklet for
Decimal(14007741) contains.

Decimal(14007741)	3
<i>Conversions</i>	4
<i>Details</i>	6
<i>Harmonies</i>	11
<i>Previews</i>	23
<i>Color Blindness Simulation</i>	26
<i>CSS Examples</i>	29

Color

Decimal(14007741)

Conversions

Conversions Part 1

Format	Color
Hex	D5BDBD
RGB	213, 189, 189
RGB Percent	84%, 74%, 74%
CMY	0.1647, 0.2588, 0.2588
CMYK	0.00, 0.11, 0.11, 0.16
HSL	0°, 22%, 79%
HSV	0°, 11%, 84%
XYZ	54.8235, 54.2154, 55.7192
YIQ	196.1760, 14.3040, 5.0880

Conversions

Conversions Part 2

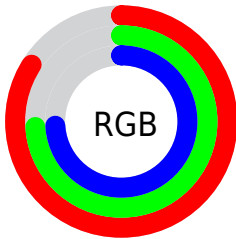
Format	Color
R _Y B	213, 189, 189
Decimal	14007741
CIE Lab	78.59, 8.51, 3.11
CIE LCh	79, 9.057, 20.076
Yxy	54.2154, 0.3328, 0.3291
Android (android.graphics.Color)	4292197821 (0xFFD5BDBD)
YUV	196.1760, -3.5378, 14.7546
Hunter-Lab	73.6311, 4.0511, 6.6750

Details

The Decimal color **14007741** is a light color, and the websafe version is hex **CCCCCC**. A complement of this color would be **12441045**, and the grayscale version is **12895428**.

A 20% lighter version of the original color is **16774645**, and **10389640** is the 20% darker color. If you saturate the color by 10%, you get **14002344**, and if you desaturate by 10%, it is **14013138**.

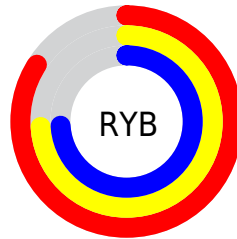
Distribution



Red (84%)

Green (74%)

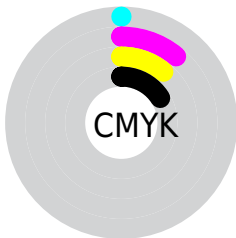
Blue (74%)



Red (84%)

Yellow (74%)

Blue (74%)

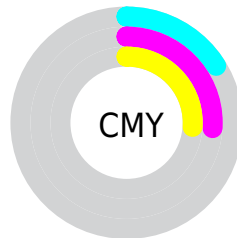


Cyan (0%)

Magenta (11%)

Yellow (11%)

Black (16%)



Cyan (16%)

Magenta (26%)

Yellow (26%)

Brightness & Saturation Gradients

These gradients show how the Decimal color 14007741 changes by changing the brightness by 10 percent. The first figure shows a shift by +10% for each color and the second figure -10%.

Similar to the brightness gradients but the following saturation gradients show a change of the Decimal color 14007741 by changing the saturation by 10% instead.

 14007741

 14007741

16777215

 12165794


 16774645

 10389640

 8679022

 7034454

 5390143

 3877161

 2429973

 393216

 0

 14007741

 14007741

 14002344

 14013138

 13996690

 14018792

 13991293

 14024189

 13985896

 14024703

 13980499

 13974845

 13969448

 13964051

 13959168

Harmonies

Analogous

The Analogous color harmony consists of three colors that are next to each other on the color wheel.



13811142



14007741



13876918

Triad

The Triadic color harmony groups three colors that are evenly spaced from another and form a triangle on the color wheel.



14007741



12240567



12043475

Complementary

The Complementary color scheme is a pair of colors which are on the opposite of each other on the color wheel.



14007741



12441045

Split Complementary

Split-complementary colors differ from the complementary color scheme. The scheme consists of three colors, the original color and two neighbors of the complement color.



11585231



14007741



11716543

Square

The Square scheme is like the rectangle color scheme, but the four colors are evenly spaced on the color wheel.



14007741



12829875



11454408



12698066

Rectangle

The Rectangle color scheme consists of four colors that form a rectangle on the color wheel.



14007741



13615283



11454408



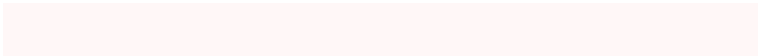
11847122

Sweetspot

The Sweet Spot groups the original color and five complimentary colors.



14007741



16775159



14007765



8419962



0



8421504

Same Dimension

The Same Dimension uses a secret algorithm to generate beautiful new colors.



14007741



16767963



14010813



7037024



11206656



2818048

Inverse Universe

The Inverse Universe completely reimagines the original color for something new.



12441045



14417919



12437973



6318955



43947



11051

Previews

White Background



This preview shows how the Decimal color 14007741 looks on a white background.

Color Contrast Check

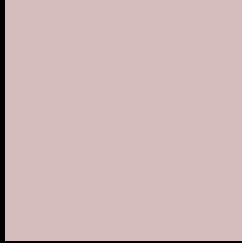
Large Text (above 18pt) WCAG AA × Fail

Any Text WCAG AA × Fail

Large Text (above 18pt) WCAG AAA × Fail

Any Text WCAG AAA × Fail

Black Background



This preview shows how the Decimal color 14007741 looks on a black background.

Color Contrast Check

Large Text (above 18pt) WCAG AA ✓ Pass

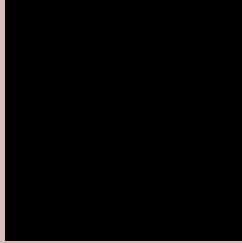
Any Text WCAG AA ✓ Pass

Large Text (above 18pt) WCAG AAA ✓ Pass

Any Text WCAG AAA ✓ Pass

If you want to check with other color combinations, try the [Color Contrast Checker](#).

Decimal 14007741 Background



This preview shows how black text looks on a background with the Decimal color 14007741.



This preview shows how white text looks on a background with the Decimal color 14007741.

Color Blindness Simulation

Color vision deficiency is a very complex topic, and I could not describe the different causes any better than Wikipedia does, so if you want to learn more, you should check out their [article about color blindness](#).

Dichromacy



Original Color
14007741

Protanopia
13091520

Deuteranopia
14138557



Tritanopia
14138314

Trichromacy



Original Color
14007741

Protanomaly
13418687

Deuteranomaly
14073021

Tritanomaly
14073029

Monochromacy



Original Color
14007741

Achromatopsia
12895428

Achromatomaly
13287873

CSS Examples

Text

The CSS property to change the color of the text to Decimal 14007741 is called "color". The color property can be set on classes, ids or directly on the HTML element.

This example shows how text in the color #D5BDBD looks like.

```
.text, #text, p{  
    color:#D5BDBD  
}
```

If you want to add a text shadow in that color use the text-shadow property, you can generate a text shadow directly with our [CSS Text Shadow Generator](#).

Here you see how black text with a 4 pixel #D5BDBD colored shadow looks like.

```
.shadow{ text-shadow: 4px 4px 2px #D5BDBD
}
```

Border

The CSS property to change the border of an element to Decimal 14007741 is called "border". The border property can be set on classes, ids or directly on the HTML element.

This example shows the color as border, it can be applied via the CSS property "border" or "border-color".

```
.border, #border, table{ border:4px solid
#D5BDBD }
```

If only the border color should be changed use the property `border-color`.

```
.border{ border-color:#D5BDBD }
```

If you want to add a box shadow in that color use:

Here you see how a box with a 4 pixel #D5BDBD colored shadow looks like.

```
.boxshadow{ -moz-box-shadow:4px 4px 4px  
4px #D5BDBD; -webkit-box-shadow:4px 4px  
4px 4px #D5BDBD; box-shadow:4px 4px 4px  
4px #D5BDBD }
```

Background

The CSS property to change the background color of an element to Decimal 14007741 is called "background". The background property can be set on classes, ids or directly on the HTML element.

```
.background, #background, body{  
background:#D5BDBD }
```

If only the background color should be changed can be used:

```
.background{ background-color:#D5BDBD }
```

This example shows the color as background, it is applied via the CSS property "background".

To optimize and compress your CSS code, you can use our [online CSS compressor and optimizer](#) based on csstidy. If you want to create a linear or radial gradient as background or border, check our [CSS Gradient Generator](#).

Hey! You found this booklet interesting? Support Converting Colors with the new Membership Option!

The pro membership hides all ads, plus gives you double the colors in the color bucket, and more awesome pro features!

[Learn more, Memberships starting at \\$2.50/m!](#)

**Follow me
on Twitter!**

@ConvertingColor