

Converting Colors

Decimal(14037361)

Have a look what the booklet for
Decimal(14037361) contains.

Decimal(14037361)	3
<i>Conversions</i>	4
<i>Details</i>	6
<i>Harmonies</i>	11
<i>Previews</i>	23
<i>Color Blindness Simulation</i>	26
<i>CSS Examples</i>	29

Color

Decimal(14037361)

Conversions

Conversions Part 1

Format	Color
Hex	D63171
RGB	214, 49, 113
RGB Percent	84%, 19%, 44%
CMY	0.1608, 0.8078, 0.5569
CMYK	0.00, 0.77, 0.47, 0.16
HSL	337°, 67%, 52%
HSV	337°, 77%, 84%
XYZ	31.8105, 17.6850, 17.3597
YIQ	105.6310, 77.7960, 54.8840

Conversions

Conversions Part 2

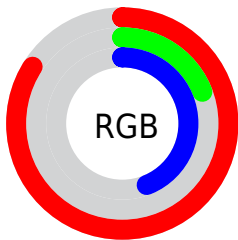
Format	Color
R_{YB}	214, 49, 113
Decimal	14037361
CIE _{Lab}	49.11, 66.49, 3.81
CIE _{LCh}	49, 66.602, 3.282
Yxy	17.6850, 0.4758, 0.2645
Android (android.graphics.Color)	4292227441 (0xFFD63171)
YUV	105.6310, 3.6329, 95.0396
Hunter-Lab	42.0536, 61.4287, 4.9625

Details

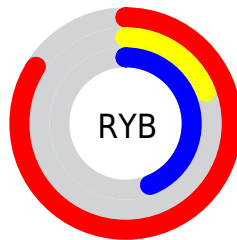
The Decimal color **14037361** is a dark color, and the websafe version is hex **CC3366**. The color can be described as dark muted rose. A complement of this color would be **3266198**, and the grayscale version is **6974058**.

A 20% lighter version of the original color is **16740261**, and **10027074** is the 20% darker color. If you saturate the color by 10%, you get **14031972**, and if you desaturate by 10%, it is **14042750**.

Distribution



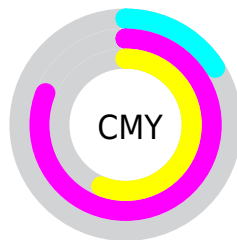
- Red (84%)
- Green (19%)
- Blue (44%)



- Red (84%)
- Yellow (19%)
- Blue (44%)



- Cyan (0%)
- Magenta (77%)
- Yellow (47%)
- Black (16%)



- Cyan (16%)
- Magenta (81%)
- Yellow (56%)

Brightness & Saturation Gradients

These gradients show how the Decimal color 14037361 changes by changing the brightness by 10 percent. The first figure shows a shift by +10% for each color and the second figure -10%.

Similar to the brightness gradients but the following saturation gradients show a change of the Decimal color 14037361 by changing the saturation by 10% instead.

 14037361	 14037361
16777215	 11993177
 16740261	 10027074
 16747712	 8060972
 16754907	 6160408
 16762616	 4390915
 16770047	 2162689
	 0
 14037361	 14037361
 14031972	 14042750

■ 14026327

■ 14048395

■ 14024787

■ 14053784

■ 14059429

■ 14064818

■ 14070208

■ 14075853

■ 14081242

■ 14086887

Harmonies

Analogous

The Analogous color harmony consists of three colors that are next to each other on the color wheel.



12338345



14037361



13713978

Triad

The Triadic color harmony groups three colors that are evenly spaced from another and form a triangle on the color wheel.



14037361



5079808



35034

Complementary

The Complementary color scheme is a pair of colors which are on the opposite of each other on the color wheel.



14037361



3266198

Split Complementary

Split-complementary colors differ from the complementary color scheme. The scheme consists of three colors, the original color and two neighbors of the complement color.



36274



14037361



35390

Square

The Square scheme is like the rectangle color scheme, but the four colors are evenly spaced on the color wheel.



14037361



8942592



36218



31463

Rectangle

The Rectangle color scheme consists of four colors that form a rectangle on the color wheel.



14037361



12604692



36218



35535

Sweetspot

The Sweet Spot groups the original color and five complimentary colors.



14037361



16762075



9712086



8412266



0



8421504

Same Dimension

The Same Dimension uses a secret algorithm to generate beautiful new colors.



14037361



16716398



14041649



7037029



11206722



2818065

Inverse Universe

The Inverse Universe completely reimagines the original color for something new.



14037361



16716398



3261910



7037029



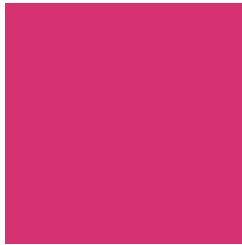
11206722



2818065

Previews

White Background



This preview shows how the Decimal color 14037361 looks on a white background.

Color Contrast Check

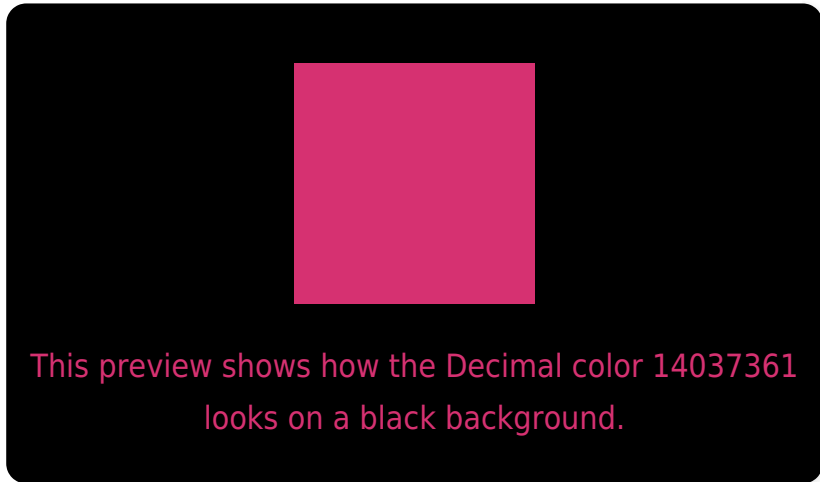
Large Text (above 18pt) WCAG AA ✓ Pass

Any Text WCAG AA ✓ Pass

Large Text (above 18pt) WCAG AAA ✓ Pass

Any Text WCAG AAA × Fail

Black Background



Color Contrast Check

Large Text (above 18pt) WCAG AA ✓ Pass

Any Text WCAG AA ✓ Pass

Large Text (above 18pt) WCAG AAA ✓ Pass

Any Text WCAG AAA × Fail

If you want to check with other color combinations, try the [Color Contrast Checker](#).

Decimal 14037361 Background



This preview shows how black text looks on a background with the Decimal color 14037361.



This preview shows how white text looks on a background with the Decimal color 14037361.

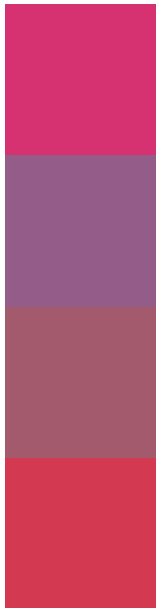
Color Blindness Simulation

Color vision deficiency is a very complex topic, and I could not describe the different causes any better than Wikipedia does, so if you want to learn more, you should check out their [article about color blindness](#).

Dichromacy



Trichromacy



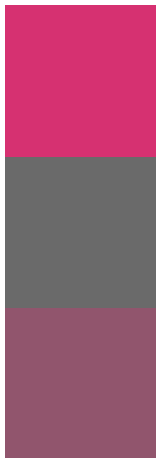
Original Color
14037361

Protanomaly
9657481

Deuteranomaly
10639980

Tritanomaly
13908306

Monochromacy



Original Color
14037361

Achromatopsia
6974058

Achromatomaly
9524589

CSS Examples

Text

The CSS property to change the color of the text to Decimal 14037361 is called "color". The color property can be set on classes, ids or directly on the HTML element.

This example shows how text in the color #D63171 looks like.

```
.text, #text, p{  
    color:#D63171  
}
```

If you want to add a text shadow in that color use the text-shadow property, you can generate a text shadow directly with our [CSS Text Shadow Generator](#).

Here you see how black text with a 4 pixel #D63171 colored shadow looks like.

```
.shadow{ text-shadow: 4px 4px 2px #D63171
}
```

Border

The CSS property to change the border of an element to Decimal 14037361 is called "border". The border property can be set on classes, ids or directly on the HTML element.

This example shows the color as border, it can be applied via the CSS property "border" or "border-color".

```
.border, #border, table{ border:4px solid
#D63171 }
```

If only the border color should be changed use the property `border-color`.

```
.border{ border-color:#D63171 }
```

If you want to add a box shadow in that color use:

Here you see how a box with a 4 pixel #D63171 colored shadow looks like.

```
.boxshadow{ -moz-box-shadow:4px 4px 4px  
4px #D63171; -webkit-box-shadow:4px 4px  
4px 4px #D63171; box-shadow:4px 4px 4px  
4px #D63171 }
```

Background

The CSS property to change the background color of an element to Decimal 14037361 is called "background". The background property can be set on classes, ids or directly on the HTML element.

```
.background, #background, body{  
background:#D63171 }
```

If only the background color should be changed can be used:

```
.background{ background-color:#D63171 }
```

This example shows the color as background, it is applied via the CSS property "background".

To optimize and compress your CSS code, you can use our [online CSS compressor and optimizer](#) based on csstidy. If you want to create a linear or radial gradient as background or border, check our [CSS Gradient Generator](#).

Hey! You found this booklet interesting? Support Converting Colors with the new Membership Option!

The pro membership hides all ads, plus gives you double the colors in the color bucket, and more awesome pro features!

[Learn more, Memberships starting at \\$2.50/m!](#)

**Follow me
on Twitter!**

@ConvertingColor