

Converting Colors

Decimal(14044272)

Have a look what the booklet for
Decimal(14044272) contains.

Decimal(14044272)	3
<i>Conversions</i>	4
<i>Details</i>	6
<i>Harmonies</i>	11
<i>Previews</i>	23
<i>Color Blindness Simulation</i>	26
<i>CSS Examples</i>	29

Color

Decimal(14044272)

Conversions

Conversions Part 1

Format	Color
Hex	D64C70
RGB	214, 76, 112
RGB Percent	84%, 30%, 44%
CMY	0.1608, 0.7020, 0.5608
CMYK	0.00, 0.64, 0.48, 0.16
HSL	344°, 63%, 57%
HSV	344°, 64%, 84%
XYZ	33.2406, 20.6349, 17.5602
YIQ	121.3660, 70.6920, 40.4520

Conversions

Conversions Part 2

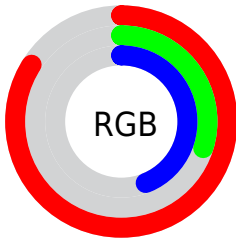
Format	Color
R_{YB}	214, 76, 112
Decimal	14044272
CIE Lab	52.55, 56.81, 9.32
CIE LCh	53, 57.570, 9.318
Yxy	20.6349, 0.4653, 0.2889
Android (android.graphics.Color)	4292234352 (0xFFD64C70)
YUV	121.3660, -4.6174, 81.2400
Hunter-Lab	45.4256, 51.1242, 8.8782

Details

The Decimal color **14044272** is a dark color, and the websafe version is hex **CC3366**. The color can be described as middle muted rose. A complement of this color would be **5035698**, and the grayscale version is **7960953**.

A 20% lighter version of the original color is **16745635**, and **10093633** is the 20% darker color. If you saturate the color by 10%, you get **14038880**, and if you desaturate by 10%, it is **14049664**.

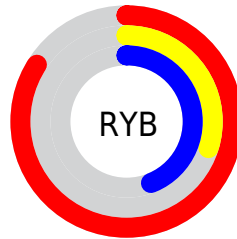
Distribution



Red (84%)

Green (30%)

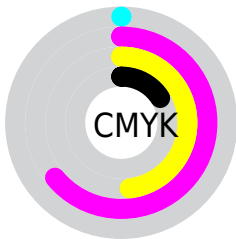
Blue (44%)



Red (84%)

Yellow (30%)

Blue (44%)

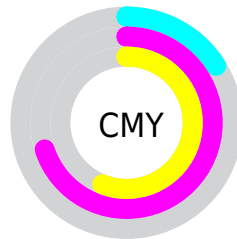


Cyan (0%)

Magenta (64%)

Yellow (48%)

Black (16%)



Cyan (16%)

Magenta (70%)

Yellow (56%)

Brightness & Saturation Gradients

These gradients show how the Decimal color 14044272 changes by changing the brightness by 10 percent. The first figure shows a shift by +10% for each color and the second figure -10%.

Similar to the brightness gradients but the following saturation gradients show a change of the Decimal color 14044272 by changing the saturation by 10% instead.

 14044272

 14044272

16777215

 12070488

 16745635

 10093633

 16752831

 8192043

 16760026

 6291479

 16767479

 4521986

 16775167

 2490369

 0

 14044272

 14044272

 14038880

 14049664

 14033232

 14055312

 14027841

 14060703

 14024760

 14066351

 14071743

 14077135

 14082783

 14088175

 14090238

Harmonies

Analogous

The Analogous color harmony consists of three colors that are next to each other on the color wheel.



12866721



14044272



13523265

Triad

The Triadic color harmony groups three colors that are evenly spaced from another and form a triangle on the color wheel.



14044272



5409834



36058

Complementary

The Complementary color scheme is a pair of colors which are on the opposite of each other on the color wheel.



14044272



5035698

Split Complementary

Split-complementary colors differ from the complementary color scheme. The scheme consists of three colors, the original color and two neighbors of the complement color.



37819



14044272



37464

Square

The Square scheme is like the rectangle color scheme, but the four colors are evenly spaced on the color wheel.



14044272



8945668



38284



2326239

Rectangle

The Rectangle color scheme consists of four colors that form a rectangle on the color wheel.



14044272



12347174



38284



36818

Sweetspot

The Sweet Spot groups the original color and five complimentary colors.



14044272



16764891



11619542



8413802



0



8421504

Same Dimension

The Same Dimension uses a secret algorithm to generate beautiful new colors.



14044272



16726894



14052428



7037027



11206701



2818059

Inverse Universe

The Inverse Universe completely reimagines the original color for something new.



14044272



16726894



5027542



7037027



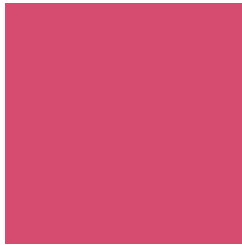
11206701



2818059

Previews

White Background



This preview shows how the Decimal color 14044272 looks on a white background.

Color Contrast Check

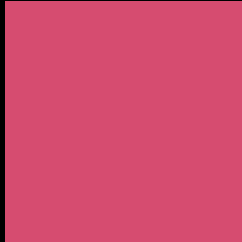
Large Text (above 18pt) WCAG AA ✓ Pass

Any Text WCAG AA × Fail

Large Text (above 18pt) WCAG AAA × Fail

Any Text WCAG AAA × Fail

Black Background



This preview shows how the Decimal color 14044272 looks on a black background.

Color Contrast Check

Large Text (above 18pt) WCAG AA ✓ Pass

Any Text WCAG AA ✓ Pass

Large Text (above 18pt) WCAG AAA ✓ Pass

Any Text WCAG AAA × Fail

If you want to check with other color combinations, try the [Color Contrast Checker](#).

Decimal 14044272 Background



This preview shows how black text looks on a background with the Decimal color 14044272.

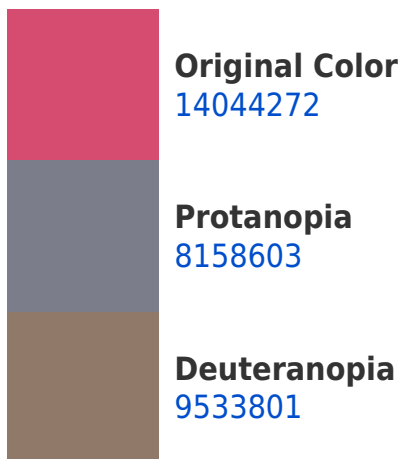



This preview shows how white text looks on a background with the Decimal color 14044272.

Color Blindness Simulation

Color vision deficiency is a very complex topic, and I could not describe the different causes any better than Wikipedia does, so if you want to learn more, you should check out their [article about color blindness](#).

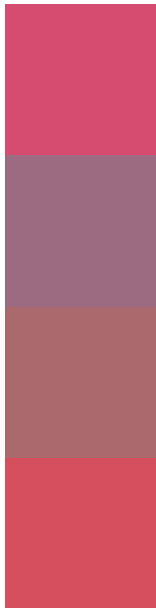
Dichromacy





Tritanopia
13914454

Trichromacy



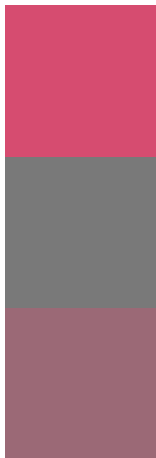
Original Color
14044272

Protanomaly
10316673

Deuteranomaly
11168108

Tritanomaly
13979487

Monochromacy



Original Color
14044272

Achromatopsia
7960953

Achromatomaly
10185078

CSS Examples

Text

The CSS property to change the color of the text to Decimal 14044272 is called "color". The color property can be set on classes, ids or directly on the HTML element.

This example shows how text in the color #D64C70 looks like.

```
.text, #text, p{  
    color:#D64C70  
}
```

If you want to add a text shadow in that color use the text-shadow property, you can generate a text shadow directly with our [CSS Text Shadow Generator](#).

Here you see how black text with a 4 pixel #D64C70 colored shadow looks like.

```
.shadow{ text-shadow: 4px 4px 2px #D64C70
}
```

Border

The CSS property to change the border of an element to Decimal 14044272 is called "border". The border property can be set on classes, ids or directly on the HTML element.

This example shows the color as border, it can be applied via the CSS property "border" or "border-color".

```
.border, #border, table{ border:4px solid
#D64C70 }
```

If only the border color should be changed use the property `border-color`.

```
.border{ border-color:#D64C70 }
```

If you want to add a box shadow in that color use:

Here you see how a box with a 4 pixel #D64C70 colored shadow looks like.

```
.boxshadow{ -moz-box-shadow:4px 4px 4px  
4px #D64C70; -webkit-box-shadow:4px 4px  
4px 4px #D64C70; box-shadow:4px 4px 4px  
4px #D64C70 }
```

Background

The CSS property to change the background color of an element to Decimal 14044272 is called "background". The background property can be set on classes, ids or directly on the HTML element.

```
.background, #background, body{  
background:#D64C70 }
```

If only the background color should be changed can be used:

```
.background{ background-color:#D64C70 }
```

This example shows the color as background, it is applied via the CSS property "background".

To optimize and compress your CSS code, you can use our [online CSS compressor and optimizer](#) based on csstidy. If you want to create a linear or radial gradient as background or border, check our [CSS Gradient Generator](#).

Hey! You found this booklet interesting? Support Converting Colors with the new Membership Option!

The pro membership hides all ads, plus gives you double the colors in the color bucket, and more awesome pro features!

[Learn more, Memberships starting at \\$2.50/m!](#)

**Follow me
on Twitter!**

@ConvertingColor