

Converting Colors

Decimal(14048402)

Have a look what the booklet for
Decimal(14048402) contains.

Decimal(14048402)	3
<i>Conversions</i>	4
<i>Details</i>	6
<i>Harmonies</i>	11
<i>Previews</i>	23
<i>Color Blindness Simulation</i>	26
<i>CSS Examples</i>	29

Color

Decimal(14048402)

Conversions

Conversions Part 1

Format	Color
Hex	D65C92
RGB	214, 92, 146
RGB Percent	84%, 36%, 57%
CMY	0.1608, 0.6392, 0.4275
CMYK	0.00, 0.57, 0.32, 0.16
HSL	333°, 60%, 60%
HSV	333°, 57%, 84%
XYZ	36.7470, 24.0258, 29.8948
YIQ	134.6340, 55.3780, 42.6580

Conversions

Conversions Part 2

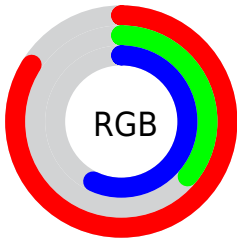
Format	Color
R _Y B	214, 92, 146
Decimal	14048402
CIE Lab	56.11, 53.41, -5.66
CIE LCh	56, 53.713, 353.956
Yxy	24.0258, 0.4053, 0.2650
Android (android.graphics.Color)	4292238482 (0xFFD65C92)
YUV	134.6340, 5.6034, 69.6040
Hunter-Lab	49.0161, 48.0421, -1.8496

Details

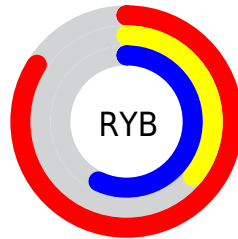
The Decimal color **14048402** is a light color, and the websafe version is hex **CC6699**. The color can be described as light muted rose. A complement of this color would be **6084256**, and the grayscale version is **8882055**.

A 20% lighter version of the original color is **16749512**, and **10232672** is the 20% darker color. If you saturate the color by 10%, you get **14043014**, and if you desaturate by 10%, it is **14053790**.

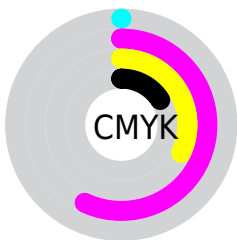
Distribution



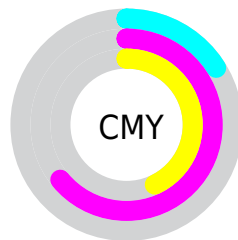
- Red (84%)
- Green (36%)
- Blue (57%)



- Red (84%)
- Yellow (36%)
- Blue (57%)



- Cyan (0%)
- Magenta (57%)
- Yellow (32%)
- Black (16%)



- Cyan (16%)
- Magenta (64%)
- Yellow (43%)

Brightness & Saturation Gradients

These gradients show how the Decimal color 14048402 changes by changing the brightness by 10 percent. The first figure shows a shift by +10% for each color and the second figure -10%.

Similar to the brightness gradients but the following saturation gradients show a change of the Decimal color 14048402 by changing the saturation by 10% instead.

 14048402

 14048402

16777215

 12140920

 16749512

 10232672

 16756708

 8323144

 16763903

 6488114

 16771327

 4718621

 3145730

 0

 14048402

 14048402

 14043014

 14053790

 14037370

 14059434

 14031982

 14064822

 14026338

 14070466

 14024799

 14075854

 14081242

 14086885

 14090225

 14090237

Harmonies

Analogous

The Analogous color harmony consists of three colors that are next to each other on the color wheel.



11954878



14048402



14376803

Triad

The Triadic color harmony groups three colors that are evenly spaced from another and form a triangle on the color wheel.



14048402



8097577



39377

Complementary

The Complementary color scheme is a pair of colors which are on the opposite of each other on the color wheel.



14048402



6084256

Split Complementary

Split-complementary colors differ from the complementary color scheme. The scheme consists of three colors, the original color and two neighbors of the complement color.



40363



14048402



4102221

Square

The Square scheme is like the rectangle color scheme, but the four colors are evenly spaced on the color wheel.



14048402



10977570



40059



36835

Rectangle

The Rectangle color scheme consists of four colors that form a rectangle on the color wheel.



14048402



13723976



40059



39878

Sweetspot

The Sweet Spot groups the original color and five complimentary colors.



14048402



16766183



10443990



8414833



0



8421504

Same Dimension

The Same Dimension uses a secret algorithm to generate beautiful new colors.



14048402



16732830



14049884



7037029



11206732



2818067

Inverse Universe

The Inverse Universe completely reimagines the original color for something new.



14048402



16732830



6082774



7037029



11206732



2818067

Previews

White Background



This preview shows how the Decimal color 14048402 looks on a white background.

Color Contrast Check

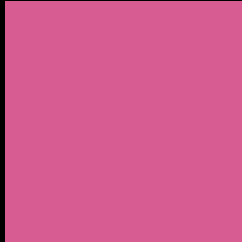
Large Text (above 18pt) WCAG AA ✓ Pass

Any Text WCAG AA ✗ Fail

Large Text (above 18pt) WCAG AAA ✗ Fail

Any Text WCAG AAA ✗ Fail

Black Background



This preview shows how the Decimal color 14048402 looks on a black background.

Color Contrast Check

Large Text (above 18pt) WCAG AA ✓ Pass

Any Text WCAG AA ✓ Pass

Large Text (above 18pt) WCAG AAA ✓ Pass

Any Text WCAG AAA × Fail

If you want to check with other color combinations, try the [Color Contrast Checker](#).

Decimal 14048402 Background



This preview shows how black text looks on a background with the Decimal color 14048402.




This preview shows how white text looks on a background with the Decimal color 14048402.

Color Blindness Simulation

Color vision deficiency is a very complex topic, and I could not describe the different causes any better than Wikipedia does, so if you want to learn more, you should check out their [article about color blindness](#).

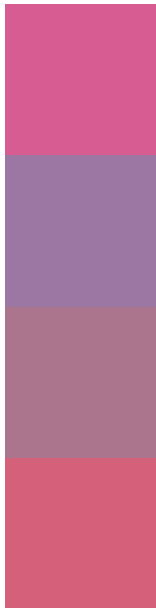
Dichromacy





Tritanopia
13853803

Trichromacy



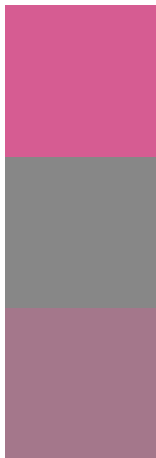
Original Color
14048402

Protanomaly
10319779

Deuteranomaly
11236750

Tritanomaly
13918585

Monochromacy



Original Color
14048402

Achromatopsia
8882055

Achromatomaly
10778507

CSS Examples

Text

The CSS property to change the color of the text to Decimal 14048402 is called "color". The color property can be set on classes, ids or directly on the HTML element.

This example shows how text in the color #D65C92 looks like.

```
.text, #text, p{  
    color:#D65C92  
}
```

If you want to add a text shadow in that color use the text-shadow property, you can generate a text shadow directly with our [CSS Text Shadow Generator](#).

Here you see how black text with a 4 pixel #D65C92 colored shadow looks like.

```
.shadow{ text-shadow: 4px 4px 2px #D65C92
}
```

Border

The CSS property to change the border of an element to Decimal 14048402 is called "border". The border property can be set on classes, ids or directly on the HTML element.

This example shows the color as border, it can be applied via the CSS property "border" or "border-color".

```
.border, #border, table{ border:4px solid
#D65C92 }
```

If only the border color should be changed use the property `border-color`.

```
.border{ border-color:#D65C92 }
```

If you want to add a box shadow in that color use:

Here you see how a box with a 4 pixel #D65C92 colored shadow looks like.

```
.boxshadow{ -moz-box-shadow:4px 4px 4px  
4px #D65C92; -webkit-box-shadow:4px 4px  
4px 4px #D65C92; box-shadow:4px 4px 4px  
4px #D65C92 }
```

Background

The CSS property to change the background color of an element to Decimal 14048402 is called "background". The background property can be set on classes, ids or directly on the HTML element.

```
.background, #background, body{  
background:#D65C92 }
```

If only the background color should be changed can be used:

```
.background{ background-color:#D65C92 }
```

This example shows the color as background, it is applied via the CSS property "background".

To optimize and compress your CSS code, you can use our [online CSS compressor and optimizer](#) based on csstidy. If you want to create a linear or radial gradient as background or border, check our [CSS Gradient Generator](#).

Hey! You found this booklet interesting? Support Converting Colors with the new Membership Option!

The pro membership hides all ads, plus gives you double the colors in the color bucket, and more awesome pro features!

[Learn more, Memberships starting at \\$2.50/m!](#)

**Follow me
on Twitter!**

@ConvertingColor