

Converting Colors

Decimal(14048648)

Have a look what the booklet for
Decimal(14048648) contains.

Decimal(14048648)	3
<i>Conversions</i>	4
<i>Details</i>	6
<i>Harmonies</i>	11
<i>Previews</i>	23
<i>Color Blindness Simulation</i>	26
<i>CSS Examples</i>	29

Color

Decimal(14048648)

Conversions

Conversions Part 1

Format	Color
Hex	D65D88
RGB	214, 93, 136
RGB Percent	84%, 36%, 53%
CMY	0.1608, 0.6353, 0.4667
CMYK	0.00, 0.57, 0.36, 0.16
HSL	339°, 60%, 60%
HSV	339°, 57%, 84%
XYZ	36.0898, 23.9024, 26.0040
YIQ	134.0810, 58.3130, 39.0250

Conversions

Conversions Part 2

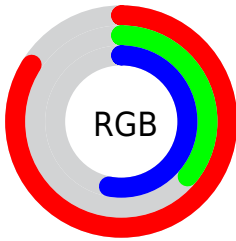
Format	Color
R_{YB}	214, 93, 136
Decimal	14048648
CIE Lab	55.99, 51.76, 0.03
CIE LCh	56, 51.763, 0.038
Yxy	23.9024, 0.4197, 0.2779
Android (android.graphics.Color)	4292238728 (0xFFD65D88)
YUV	134.0810, 0.9461, 70.0890
Hunter-Lab	48.8901, 46.2080, 2.6875

Details

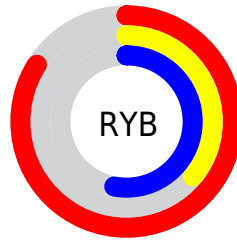
The Decimal color **14048648** is a dark color, and the websafe version is hex **CC6699**. The color can be described as middle muted rose. A complement of this color would be **6149803**, and the grayscale version is **8816262**.

A 20% lighter version of the original color is **16749757**, and **10167638** is the 20% darker color. If you saturate the color by 10%, you get **14043258**, and if you desaturate by 10%, it is **14054038**.

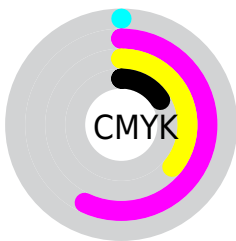
Distribution



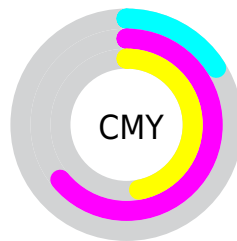
- Red (84%)
- Green (36%)
- Blue (53%)



- Red (84%)
- Yellow (36%)
- Blue (53%)



- Cyan (0%)
- Magenta (57%)
- Yellow (36%)
- Black (16%)



- Cyan (16%)
- Magenta (64%)
- Yellow (47%)

Brightness & Saturation Gradients

These gradients show how the Decimal color 14048648 changes by changing the brightness by 10 percent. The first figure shows a shift by +10% for each color and the second figure -10%.

Similar to the brightness gradients but the following saturation gradients show a change of the Decimal color 14048648 by changing the saturation by 10% instead.

 14048648

 14048648

16777215

 12075631

 16749757

 10167638

 16756953

 8323135

 16764149

 6488106

 16771583

 4653077

 3014658

 0

 14048648

 14048648

 14043258

 14054038

 14037612

 14059684

 14032223

 14065073

 14026577

 14070719

 14024780

 14076109

 14081499

 14087145

 14090230

 14090239

Harmonies

Analogous

The Analogous color harmony consists of three colors that are next to each other on the color wheel.



12413108



14048648



14050140

Triad

The Triadic color harmony groups three colors that are evenly spaced from another and form a triangle on the color wheel.



14048648



7442739



38612

Complementary

The Complementary color scheme is a pair of colors which are on the opposite of each other on the color wheel.



14048648



6149803

Split Complementary

Split-complementary colors differ from the complementary color scheme. The scheme consists of three colors, the original color and two neighbors of the complement color.



39858



14048648



3184727

Square

The Square scheme is like the rectangle color scheme, but the four colors are evenly spaced on the color wheel.



14048648



10388517



40069



35808

Rectangle

The Rectangle color scheme consists of four colors that form a rectangle on the color wheel.



14048648



13266242



40069



39370

Sweetspot

The Sweet Spot groups the original color and five complimentary colors.



14048648



16766179



11165142



8414831



0



8421504

Same Dimension

The Same Dimension uses a secret algorithm to generate beautiful new colors.



14048648



16732815



14052701



7037028



11206717



2818063

Inverse Universe

The Inverse Universe completely reimagines the original color for something new.



14048648



16732815



6145750



7037028



11206717



2818063

Previews

White Background



This preview shows how the Decimal color 14048648 looks on a white background.

Color Contrast Check

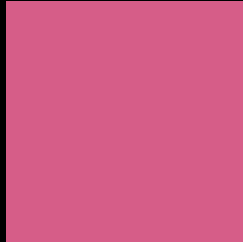
Large Text (above 18pt) WCAG AA ✓ Pass

Any Text WCAG AA ✗ Fail

Large Text (above 18pt) WCAG AAA ✗ Fail

Any Text WCAG AAA ✗ Fail

Black Background



This preview shows how the Decimal color 14048648 looks on a black background.

Color Contrast Check

Large Text (above 18pt) WCAG AA ✓ Pass

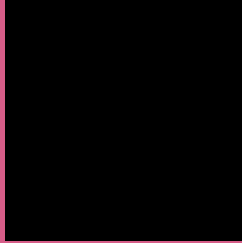
Any Text WCAG AA ✓ Pass

Large Text (above 18pt) WCAG AAA ✓ Pass

Any Text WCAG AAA × Fail

If you want to check with other color combinations, try the [Color Contrast Checker](#).

Decimal 14048648 Background



This preview shows how black text looks on a background with the Decimal color 14048648.




This preview shows how white text looks on a background with the Decimal color 14048648.

Color Blindness Simulation

Color vision deficiency is a very complex topic, and I could not describe the different causes any better than Wikipedia does, so if you want to learn more, you should check out their [article about color blindness](#).

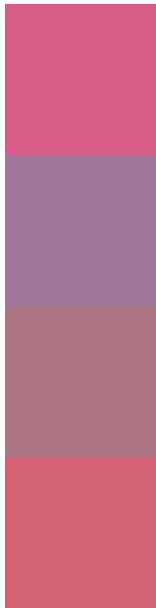
Dichromacy





Tritanopia
13919082

Trichromacy



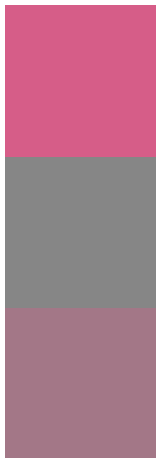
Original Color
14048648

Protanomaly
10516376

Deuteranomaly
11367812

Tritanomaly
13984117

Monochromacy



Original Color
14048648

Achromatopsia
8816262

Achromatomaly
10712967

CSS Examples

Text

The CSS property to change the color of the text to Decimal 14048648 is called "color". The color property can be set on classes, ids or directly on the HTML element.

This example shows how text in the color #D65D88 looks like.

```
.text, #text, p{  
    color:#D65D88  
}
```

If you want to add a text shadow in that color use the text-shadow property, you can generate a text shadow directly with our [CSS Text Shadow Generator](#).

Here you see how black text with a 4 pixel #D65D88 colored shadow looks like.

```
.shadow{ text-shadow: 4px 4px 2px #D65D88
}
```

Border

The CSS property to change the border of an element to Decimal 14048648 is called "border". The border property can be set on classes, ids or directly on the HTML element.

This example shows the color as border, it can be applied via the CSS property "border" or "border-color".

```
.border, #border, table{ border:4px solid
#D65D88 }
```

If only the border color should be changed use the property `border-color`.

```
.border{ border-color:#D65D88 }
```

If you want to add a box shadow in that color use:

Here you see how a box with a 4 pixel #D65D88 colored shadow looks like.

```
.boxshadow{ -moz-box-shadow:4px 4px 4px  
4px #D65D88; -webkit-box-shadow:4px 4px  
4px 4px #D65D88; box-shadow:4px 4px 4px  
4px #D65D88 }
```

Background

The CSS property to change the background color of an element to Decimal 14048648 is called "background". The background property can be set on classes, ids or directly on the HTML element.

```
.background, #background, body{  
background:#D65D88 }
```

If only the background color should be changed can be used:

```
.background{ background-color:#D65D88 }
```

This example shows the color as background, it is applied via the CSS property "background".

To optimize and compress your CSS code, you can use our [online CSS compressor and optimizer](#) based on csstidy. If you want to create a linear or radial gradient as background or border, check our [CSS Gradient Generator](#).

Hey! You found this booklet interesting? Support Converting Colors with the new Membership Option!

The pro membership hides all ads, plus gives you double the colors in the color bucket, and more awesome pro features!

[Learn more, Memberships starting at \\$2.50/m!](#)

**Follow me
on Twitter!**

@ConvertingColor