

Converting Colors

Decimal(14055562)

Have a look what the booklet for
Decimal(14055562) contains.

Decimal(14055562)	3
<i>Conversions</i>	4
<i>Details</i>	6
<i>Harmonies</i>	11
<i>Previews</i>	23
<i>Color Blindness Simulation</i>	26
<i>CSS Examples</i>	29

Color

Decimal(14055562)

Conversions

Conversions Part 1

Format	Color
Hex	D6788A
RGB	214, 120, 138
RGB Percent	84%, 47%, 54%
CMY	0.1608, 0.5294, 0.4588
CMYK	0.00, 0.44, 0.36, 0.16
HSL	349°, 53%, 65%
HSV	349°, 44%, 84%
XYZ	39.0355, 29.5641, 27.6938
YIQ	150.1580, 50.2460, 25.5260

Conversions

Conversions Part 2

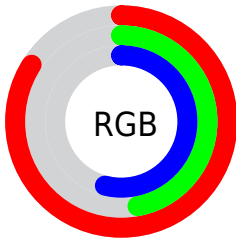
Format	Color
R _Y B	214, 120, 138
Decimal	14055562
CIE Lab	61.28, 38.57, 6.52
CIE LCh	61, 39.118, 9.590
Yxy	29.5641, 0.4054, 0.3070
Android (android.graphics.Color)	4292245642 (0xFFD6788A)
YUV	150.1580, -5.9939, 55.9894
Hunter-Lab	54.3728, 32.9966, 7.8627

Details

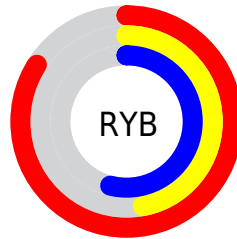
The Decimal color **14055562** is a light color, and the websafe version is hex **CC6666**. A complement of this color would be **7919300**, and the grayscale version is **9868950**.

A 20% lighter version of the original color is **16756415**, and **10306904** is the 20% darker color. If you saturate the color by 10%, you get **14050169**, and if you desaturate by 10%, it is **14060955**.

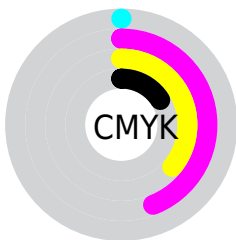
Distribution



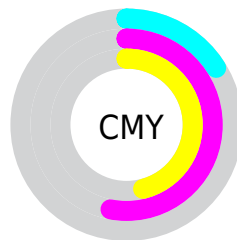
- Red (84%)
- Green (47%)
- Blue (54%)



- Red (84%)
- Yellow (47%)
- Blue (54%)



- Cyan (0%)
- Magenta (44%)
- Yellow (36%)
- Black (16%)



- Cyan (16%)
- Magenta (53%)
- Yellow (46%)

Brightness & Saturation Gradients

These gradients show how the Decimal color 14055562 changes by changing the brightness by 10 percent. The first figure shows a shift by +10% for each color and the second figure -10%.

Similar to the brightness gradients but the following saturation gradients show a change of the Decimal color 14055562 by changing the saturation by 10% instead.

 14055562

 14055562

16777215

 12148337

 16756415

 10306904

 16763611

 8465217

 16770808

 6623275

 4849687

 3342337

 196608

 0

 14055562

 14055562

 14050169

 14060955

 14044519

 14066605

 14039126

 14071998

 14033477

 14077647

 14028083

 14083041

 14024745

 14088434

 14090239

Harmonies

Analogous

The Analogous color harmony consists of three colors that are next to each other on the color wheel.



13139117



14055562



13729386

Triad

The Triadic color harmony groups three colors that are evenly spaced from another and form a triangle on the color wheel.



1405562



7970653



2268884

Complementary

The Complementary color scheme is a pair of colors which are on the opposite of each other on the color wheel.



1405562



7919300

Split Complementary

Split-complementary colors differ from the complementary color scheme. The scheme consists of three colors, the original color and two neighbors of the complement color.



42175



1405562



4957307

Square

The Square scheme is like the rectangle color scheme, but the four colors are evenly spaced on the color wheel.



1405562



10458702



42654



7443672

Rectangle

The Rectangle color scheme consists of four colors that form a rectangle on the color wheel.



14055562



13010265



42654



41423

Sweetspot

The Sweet Spot groups the original color and five complimentary colors.



14055562



16768740



12810454



8416111



0



8421504

Same Dimension

The Same Dimension uses a secret algorithm to generate beautiful new colors.



14055562



16742546



14062712



7037026



11206689



2818056

Inverse Universe

The Inverse Universe completely reimagines the original color for something new.



14055562



16742546



7912150



7037026



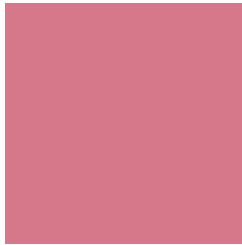
11206689



2818056

Previews

White Background



This preview shows how the Decimal color 14055562 looks on a white background.

Color Contrast Check

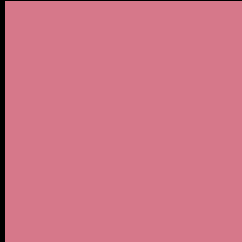
Large Text (above 18pt) WCAG AA ✓ Pass

Any Text WCAG AA ✗ Fail

Large Text (above 18pt) WCAG AAA ✗ Fail

Any Text WCAG AAA ✗ Fail

Black Background



This preview shows how the Decimal color 14055562 looks on a black background.

Color Contrast Check

Large Text (above 18pt) WCAG AA ✓ Pass

Any Text WCAG AA ✓ Pass

Large Text (above 18pt) WCAG AAA ✓ Pass

Any Text WCAG AAA × Fail

If you want to check with other color combinations, try the [Color Contrast Checker](#).

Decimal 14055562 Background



This preview shows how black text looks on a background with the Decimal color 14055562.



This preview shows how white text looks on a background with the Decimal color 14055562.

Color Blindness Simulation

Color vision deficiency is a very complex topic, and I could not describe the different causes any better than Wikipedia does, so if you want to learn more, you should check out their [article about color blindness](#).

Dichromacy



Original Color
14055562

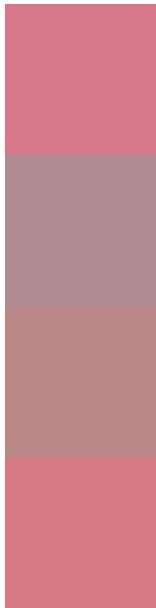
Protanopia
9868441

Deuteranopia
11046790



Tritanopia
13990274

Trichromacy



Original Color
14055562

Protanomaly
11373204

Deuteranomaly
12158855

Tritanomaly
13990277

Monochromacy



Original Color
14055562

Achromatopsia
9868950

Achromatomaly
11373458

CSS Examples

Text

The CSS property to change the color of the text to Decimal 14055562 is called "color". The color property can be set on classes, ids or directly on the HTML element.

This example shows how text in the color #D6788A looks like.

```
.text, #text, p{  
  color:#D6788A  
}
```

If you want to add a text shadow in that color use the text-shadow property, you can generate a text shadow directly with our [CSS Text Shadow Generator](#).

Here you see how black text with a 4 pixel #D6788A colored shadow looks like.

```
.shadow{ text-shadow: 4px 4px 2px #D6788A
}
```

Border

The CSS property to change the border of an element to Decimal 14055562 is called "border". The border property can be set on classes, ids or directly on the HTML element.

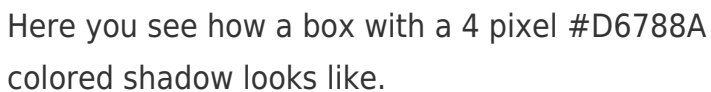
This example shows the color as border, it can be applied via the CSS property "border" or "border-color".

```
.border, #border, table{ border:4px solid
#D6788A }
```

If only the border color should be changed use the property `border-color`.

```
.border{ border-color:#D6788A }
```

If you want to add a box shadow in that color use:



Here you see how a box with a 4 pixel #D6788A colored shadow looks like.

```
.boxshadow{ -moz-box-shadow:4px 4px 4px  
4px #D6788A; -webkit-box-shadow:4px 4px  
4px 4px #D6788A; box-shadow:4px 4px 4px  
4px #D6788A }
```

Background

The CSS property to change the background color of an element to Decimal 14055562 is called "background". The background property can be set on classes, ids or directly on the HTML element.

```
.background, #background, body{  
background:#D6788A }
```

If only the background color should be changed can be used:

```
.background{ background-color:#D6788A }
```

This example shows the color as background, it is applied via the CSS property "background".

To optimize and compress your CSS code, you can use our [online CSS compressor and optimizer](#) based on csstidy. If you want to create a linear or radial gradient as background or border, check our [CSS Gradient Generator](#).

Hey! You found this booklet interesting? Support Converting Colors with the new Membership Option!

The pro membership hides all ads, plus gives you double the colors in the color bucket, and more awesome pro features!

[Learn more, Memberships starting at \\$2.50/m!](#)

**Follow me
on Twitter!**

@ConvertingColor