

Converting Colors

Decimal(14064508)

Have a look what the booklet for
Decimal(14064508) contains.

Decimal(14064508)	3
<i>Conversions</i>	4
<i>Details</i>	6
<i>Harmonies</i>	11
<i>Previews</i>	23
<i>Color Blindness Simulation</i>	26
<i>CSS Examples</i>	29

Color

Decimal(14064508)

Conversions

Conversions Part 1

Format	Color
Hex	D69B7C
RGB	214, 155, 124
RGB Percent	84%, 61%, 49%
CMY	0.1608, 0.3922, 0.5137
CMYK	0.00, 0.28, 0.42, 0.16
HSL	21°, 52%, 66%
HSV	21°, 42%, 84%
XYZ	43.0910, 39.1941, 24.3629
YIQ	169.1070, 45.1150, 2.8670

Conversions

Conversions Part 2

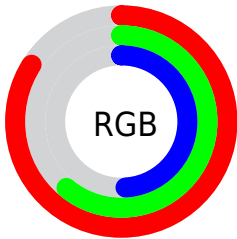
Format	Color
RYB	214, 171, 124
Decimal	14064508
CIELab	68.89, 18.20, 24.95
CIElCh	69, 30.877, 53.893
Yxy	39.1941, 0.4040, 0.3675
Android (android.graphics.Color)	4292254588 (0xFFD69B7C)
YUV	169.1070, -22.2378, 39.3712
Hunter-Lab	62.6052, 13.3021, 20.7509

Details

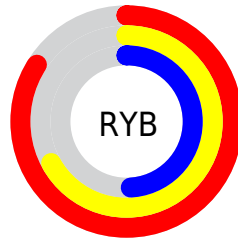
The Decimal color **14064508** is a light color, and the websafe version is hex **CC9966**. A complement of this color would be **8173526**, and the grayscale version is **11119017**.

A 20% lighter version of the original color is **16765617**, and **10315851** is the 20% darker color. If you saturate the color by 10%, you get **14060903**, and if you desaturate by 10%, it is **14068113**.

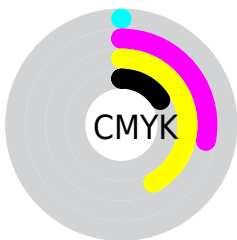
Distribution



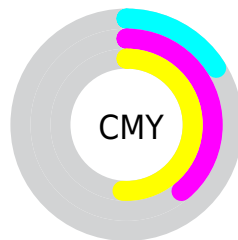
- Red (84%)
- Green (61%)
- Blue (49%)



- Red (84%)
- Yellow (67%)
- Blue (49%)



- Cyan (0%)
- Magenta (28%)
- Yellow (42%)
- Black (16%)



- Cyan (16%)
- Magenta (39%)
- Yellow (51%)

Brightness & Saturation Gradients

These gradients show how the Decimal color 14064508 changes by changing the brightness by 10 percent. The first figure shows a shift by +10% for each color and the second figure -10%.

Similar to the brightness gradients but the following saturation gradients show a change of the Decimal color 14064508 by changing the saturation by 10% instead.

 14064508

 14064508

16777215

 12157283

 16765617

 10315851

 16772812

 8539956

 16777193

 6764574

 5054983

 3345664

 1703937

 0

 14064508

 14064508

 14060903

 14068113

 14057297

 14071719

 14053692

 14075324

 14050086

 14078930

 14046481

 14082535

 14043648

 14086140

 14089727

 14090239

Harmonies

Analogous

The Analogous color harmony consists of three colors that are next to each other on the color wheel.



14718099



14064508



12690545

Triad

The Triadic color harmony groups three colors that are evenly spaced from another and form a triangle on the color wheel.



14064508



6600609



10789851

Complementary

The Complementary color scheme is a pair of colors which are on the opposite of each other on the color wheel.



14064508



8173526

Split Complementary

Split-complementary colors differ from the complementary color scheme. The scheme consists of three colors, the original color and two neighbors of the complement color.



8039903



14064508



5093310

Square

The Square scheme is like the rectangle color scheme, but the four colors are evenly spaced on the color wheel.



14064508



8696966



5682388



13015497

Rectangle

The Rectangle color scheme consists of four colors that form a rectangle on the color wheel.



14064508



11447153



5682388



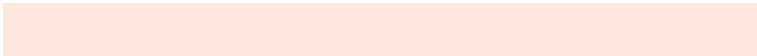
9938654

Sweetspot

The Sweet Spot groups the original color and five complimentary colors.



14064508



16771550



14056632



8417899



0



8421504

Same Dimension

The Same Dimension uses a secret algorithm to generate beautiful new colors.



14064508



16755584



14075772



7038048



11221760



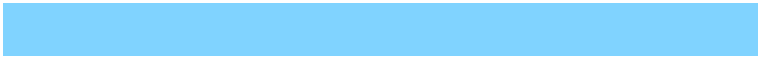
2821888

Inverse Universe

The Inverse Universe completely reimagines the original color for something new.



8173526



8442879



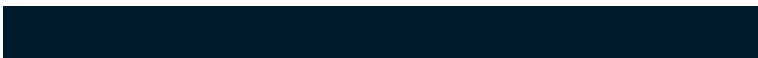
8162262



6317931



28843



7211

Previews

White Background



This preview shows how the Decimal color 14064508 looks on a white background.

Color Contrast Check

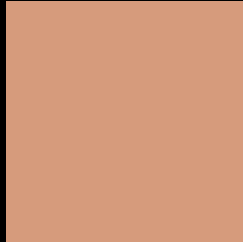
Large Text (above 18pt) WCAG AA × Fail

Any Text WCAG AA × Fail

Large Text (above 18pt) WCAG AAA × Fail

Any Text WCAG AAA × Fail

Black Background



This preview shows how the Decimal color 14064508 looks on a black background.

Color Contrast Check

Large Text (above 18pt) WCAG AA ✓ Pass

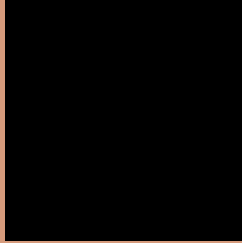
Any Text WCAG AA ✓ Pass

Large Text (above 18pt) WCAG AAA ✓ Pass

Any Text WCAG AAA ✓ Pass

If you want to check with other color combinations, try the [Color Contrast Checker](#).

Decimal 14064508 Background



This preview shows how black text looks on a background with the Decimal color 14064508.




This preview shows how white text looks on a background with the Decimal color 14064508.

Color Blindness Simulation

Color vision deficiency is a very complex topic, and I could not describe the different causes any better than Wikipedia does, so if you want to learn more, you should check out their [article about color blindness](#).

Dichromacy





Tritanopia
14259873

Trichromacy



Original Color
14064508

Protanomaly
12624768

Deuteranomaly
13410171

Tritanomaly
14194836

Monochromacy



Original Color
14064508

Achromatopsia
11119017

Achromatomaly
12166297

CSS Examples

Text

The CSS property to change the color of the text to Decimal 14064508 is called "color". The color property can be set on classes, ids or directly on the HTML element.

This example shows how text in the color #D69B7C looks like.

```
.text, #text, p{  
  color:#D69B7C  
}
```

If you want to add a text shadow in that color use the text-shadow property, you can generate a text shadow directly with our [CSS Text Shadow Generator](#).

Here you see how black text with a 4 pixel #D69B7C colored shadow looks like.

```
.shadow{ text-shadow: 4px 4px 2px #D69B7C
}
```

Border

The CSS property to change the border of an element to Decimal 14064508 is called "border". The border property can be set on classes, ids or directly on the HTML element.

This example shows the color as border, it can be applied via the CSS property "border" or "border-color".

```
.border, #border, table{ border:4px solid
#D69B7C }
```

If only the border color should be changed use the property `border-color`.

```
.border{ border-color:#D69B7C }
```

If you want to add a box shadow in that color use:

Here you see how a box with a 4 pixel #D69B7C colored shadow looks like.

```
.boxshadow{ -moz-box-shadow:4px 4px 4px  
4px #D69B7C; -webkit-box-shadow:4px 4px  
4px 4px #D69B7C; box-shadow:4px 4px 4px  
4px #D69B7C }
```

Background

The CSS property to change the background color of an element to Decimal 14064508 is called "background". The background property can be set on classes, ids or directly on the HTML element.

```
.background, #background, body{  
background:#D69B7C }
```

If only the background color should be changed can be used:

```
.background{ background-color:#D69B7C }
```

This example shows the color as background, it is applied via the CSS property "background".

To optimize and compress your CSS code, you can use our [online CSS compressor and optimizer](#) based on csstidy. If you want to create a linear or radial gradient as background or border, check our [CSS Gradient Generator](#).

Hey! You found this booklet interesting? Support Converting Colors with the new Membership Option!

The pro membership hides all ads, plus gives you double the colors in the color bucket, and more awesome pro features!

[Learn more, Memberships starting at \\$2.50/m!](#)

**Follow me
on Twitter!**

@ConvertingColor