

Converting Colors

Decimal(14065047)

Have a look what the booklet for
Decimal(14065047) contains.

| | |
|--|----|
| Decimal(14065047) | 3 |
| <i>Conversions</i> | 4 |
| <i>Details</i> | 6 |
| <i>Harmonies</i> | 11 |
| <i>Previews</i> | 23 |
| <i>Color Blindness Simulation</i> | 26 |
| <i>CSS Examples</i> | 29 |

Color

Decimal(14065047)

Conversions

Conversions Part 1

| Format | Color |
|-------------|----------------------------|
| Hex | D69D97 |
| RGB | 214, 157, 151 |
| RGB Percent | 84%, 62%, 59% |
| CMY | 0.1608, 0.3843, 0.4078 |
| CMYK | 0.00, 0.27, 0.29, 0.16 |
| HSL | 6°, 43%, 72% |
| HSV | 6°, 29%, 84% |
| XYZ | 45.3744, 40.6444, 34.7318 |
| YIQ | 173.3590, 35.8980, 10.2180 |

Conversions

Conversions Part 2

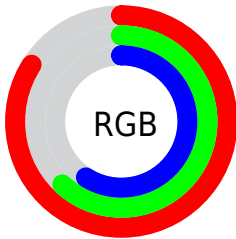
| Format | Color |
|-------------------------------------|--------------------------------|
| R_{YB} | 214, 158, 151 |
| Decimal | 14065047 |
| CIE Lab | 69.93, 20.40, 11.50 |
| CIE LCh | 70, 23.420, 29.396 |
| Yxy | 40.6444, 0.3758, 0.3366 |
| Android (android.graphics.Color) | 4292255127 (0xFFD69D97) |
| YUV | 173.3590, -11.0230, 35.6422 |
| Hunter-Lab | 63.7530, 15.4747, 12.3267 |

Details

The Decimal color **14065047** is a light color, and the websafe version is hex **CC9999**. A complement of this color would be **9949398**, and the grayscale version is **11382189**.

A 20% lighter version of the original color is **16766157**, and **10381668** is the 20% darker color. If you saturate the color by 10%, you get **14060162**, and if you desaturate by 10%, it is **14069932**.

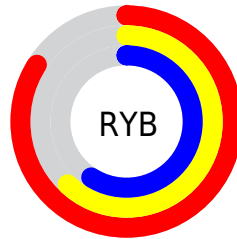
Distribution



Red (84%)

Green (62%)

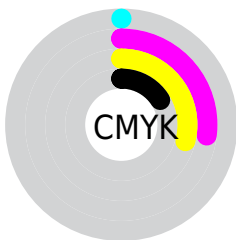
Blue (59%)



Red (84%)

Yellow (62%)

Blue (59%)

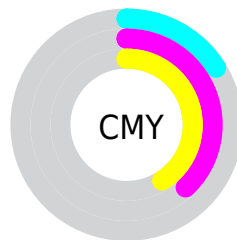


Cyan (0%)

Magenta (27%)

Yellow (29%)

Black (16%)



Cyan (16%)

Magenta (38%)

Yellow (41%)

Brightness & Saturation Gradients

These gradients show how the Decimal color 14065047 changes by changing the brightness by 10 percent. The first figure shows a shift by +10% for each color and the second figure -10%.

Similar to the brightness gradients but the following saturation gradients show a change of the Decimal color 14065047 by changing the saturation by 10% instead.

 14065047

 14065047

16777215

 12223357

 16766157

 10381668

 16773353

 8606028

 6895926

 5186336

 3607817

 2228225

 0

 14065047

 14065047

 14060162

 14069932

 14055020

 14075074

 14050135

 14079959

 14045249

 14084845

 14040108

 14089983

 14035223

 14090239

 14030081

 14029824

Harmonies

Analogous

The Analogous color harmony consists of three colors that are next to each other on the color wheel.



13933740



14065047



13476487

Triad

The Triadic color harmony groups three colors that are evenly spaced from another and form a triangle on the color wheel.



14065047



9221525



9547221

Complementary

The Complementary color scheme is a pair of colors which are on the opposite of each other on the color wheel.



14065047



9949398

Split Complementary

Split-complementary colors differ from the complementary color scheme. The scheme consists of three colors, the original color and two neighbors of the complement color.



7910351



14065047



7845802

Square

The Square scheme is like the rectangle color scheme, but the four colors are evenly spaced on the color wheel.



14065047



10793094



7255743



11445968

Rectangle

The Rectangle color scheme consists of four colors that form a rectangle on the color wheel.



14065047



12756865



7255743



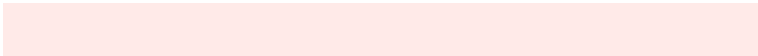
8892372

Sweetspot

The Sweet Spot groups the original color and five complimentary colors.



14065047



16771816



14063569



8418161



0



8421504

Same Dimension

The Same Dimension uses a secret algorithm to generate beautiful new colors.



14065047



16756390



14072983



7037280



11210752



2819072

Inverse Universe

The Inverse Universe completely reimagines the original color for something new.



9949398



10942207



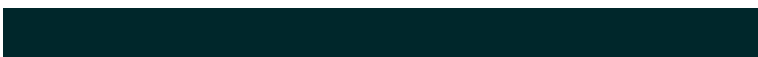
9941462



6318699



39851



10027

Previews

White Background



This preview shows how the Decimal color 14065047 looks on a white background.

Color Contrast Check

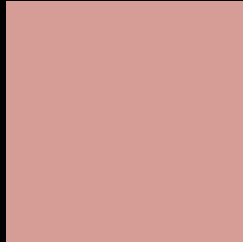
Large Text (above 18pt) WCAG AA × Fail

Any Text WCAG AA × Fail

Large Text (above 18pt) WCAG AAA × Fail

Any Text WCAG AAA × Fail

Black Background



This preview shows how the Decimal color 14065047 looks on a black background.

Color Contrast Check

Large Text (above 18pt) WCAG AA ✓ Pass

Any Text WCAG AA ✓ Pass

Large Text (above 18pt) WCAG AAA ✓ Pass

Any Text WCAG AAA ✓ Pass

If you want to check with other color combinations, try the [Color Contrast Checker](#).

Decimal 14065047 Background



This preview shows how black text looks on a background with the Decimal color 14065047.




This preview shows how white text looks on a background with the Decimal color 14065047.

Color Blindness Simulation

Color vision deficiency is a very complex topic, and I could not describe the different causes any better than Wikipedia does, so if you want to learn more, you should check out their [article about color blindness](#).

Dichromacy





Tritanopia
14195622

Trichromacy



Original Color
14065047

Protanomaly
12494491

Deuteranomaly
13345430

Tritanomaly
14130337

Monochromacy



Original Color
14065047

Achromatopsia
11382189

Achromatomaly
12363685

CSS Examples

Text

The CSS property to change the color of the text to Decimal 14065047 is called "color". The color property can be set on classes, ids or directly on the HTML element.

This example shows how text in the color #D69D97 looks like.

```
.text, #text, p{  
    color:#D69D97  
}
```

If you want to add a text shadow in that color use the text-shadow property, you can generate a text shadow directly with our [CSS Text Shadow Generator](#).

Here you see how black text with a 4 pixel #D69D97 colored shadow looks like.

```
.shadow{ text-shadow: 4px 4px 2px #D69D97
}
```

Border

The CSS property to change the border of an element to Decimal 14065047 is called "border". The border property can be set on classes, ids or directly on the HTML element.

This example shows the color as border, it can be applied via the CSS property "border" or "border-color".

```
.border, #border, table{ border:4px solid
#D69D97 }
```

If only the border color should be changed use the property `border-color`.

```
.border{ border-color:#D69D97 }
```

If you want to add a box shadow in that color use:

Here you see how a box with a 4 pixel #D69D97 colored shadow looks like.

```
.boxshadow{ -moz-box-shadow:4px 4px 4px  
4px #D69D97; -webkit-box-shadow:4px 4px  
4px 4px #D69D97; box-shadow:4px 4px 4px  
4px #D69D97 }
```

Background

The CSS property to change the background color of an element to Decimal 14065047 is called "background". The background property can be set on classes, ids or directly on the HTML element.

```
.background, #background, body{  
background:#D69D97 }
```

If only the background color should be changed can be used:

```
.background{ background-color:#D69D97 }
```

This example shows the color as background, it is applied via the CSS property "background".

To optimize and compress your CSS code, you can use our [online CSS compressor and optimizer](#) based on csstidy. If you want to create a linear or radial gradient as background or border, check our [CSS Gradient Generator](#).

Hey! You found this booklet interesting? Support Converting Colors with the new Membership Option!

The pro membership hides all ads, plus gives you double the colors in the color bucket, and more awesome pro features!

[Learn more, Memberships starting at \\$2.50/m!](#)

**Follow me
on Twitter!**

@ConvertingColor