

# Converting Colors

Decimal(14067080)

Have a look what the booklet for  
Decimal(14067080) contains.

<b>Decimal(14067080)</b> .....	3
<i><b>Conversions</b></i> .....	4
<i><b>Details</b></i> .....	6
<i><b>Harmonies</b></i> .....	11
<i><b>Previews</b></i> .....	23
<i><b>Color Blindness Simulation</b></i> .....	26
<i><b>CSS Examples</b></i> .....	29

# **Color**

**Decimal(14067080)**

# Conversions

## Conversions Part 1

Format	Color
Hex	D6A588
RGB	214, 165, 136
RGB Percent	84%, 65%, 53%
CMY	0.1608, 0.3529, 0.4667
CMYK	0.00, 0.23, 0.36, 0.16
HSL	22°, 49%, 69%
HSV	22°, 36%, 84%
XYZ	45.6306, 42.9840, 29.1843
YIQ	176.3450, 38.5130, 1.3690

# Conversions

## Conversions Part 2

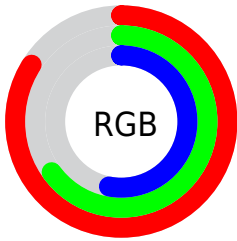
Format	Color
R <sub>Y</sub> B	214, 182, 136
Decimal	14067080
CIE Lab	71.54, 14.16, 21.99
CIE LCh	72, 26.154, 57.209
Yxy	42.9840, 0.3874, 0.3649
Android (android.graphics.Color)	4292257160 (0xFFD6A588)
YUV	176.3450, -19.8901, 33.0234
Hunter-Lab	65.5622, 9.5004, 19.5012

# Details

The Decimal color **14067080** is a light color, and the websafe version is hex **CC9966**. A complement of this color would be **8960470**, and the grayscale version is **11645361**.

A 20% lighter version of the original color is **16768189**, and **10383702** is the 20% darker color. If you saturate the color by 10%, you get **14063731**, and if you desaturate by 10%, it is **14070429**.

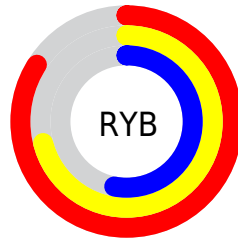
# Distribution



Red (84%)

Green (65%)

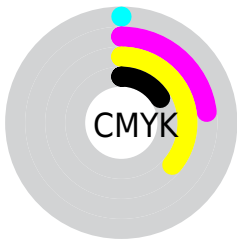
Blue (53%)



Red (84%)

Yellow (71%)

Blue (53%)

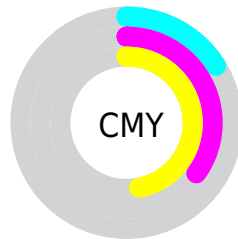


Cyan (0%)

Magenta (23%)

Yellow (36%)

Black (16%)



Cyan (16%)

Magenta (35%)

Yellow (47%)

# Brightness & Saturation Gradients

These gradients show how the Decimal color 14067080 changes by changing the brightness by 10 percent. The first figure shows a shift by +10% for each color and the second figure -10%.

Similar to the brightness gradients but the following saturation gradients show a change of the Decimal color 14067080 by changing the saturation by 10% instead.



 14067080

 14067080

16777215

 12225391

 16768189

 10383702

 16775641

 8608063

 16777206

 6832424

 5122835

 3544576

 2031616

 0

 14067080

 14067080

 14063731

 14070429

 14060125

 14074035

 14056776

 14077384

 14053170

 14080990

 14049821

 14084339

 14046216

 14087935

 14045184

 14090239

# Harmonies

## Analogous

The Analogous color harmony consists of three colors that are next to each other on the color wheel.



14655387



14067080



12823936

# Triad

The Triadic color harmony groups three colors that are evenly spaced from another and form a triangle on the color wheel.



14067080



7716268



11578074

# Complementary

The Complementary color scheme is a pair of colors which are on the opposite of each other on the color wheel.



14067080



8960470

# Split Complementary

Split-complementary colors differ from the complementary color scheme. The scheme consists of three colors, the original color and two neighbors of the complement color.



9417438



14067080



6864068

# Square

The Square scheme is like the rectangle color scheme, but the four colors are evenly spaced on the color wheel.



14067080



9353877



7518679



13411017

# Rectangle

The Rectangle color scheme consists of four colors that form a rectangle on the color wheel.



14067080



11711105



7518679



10857949

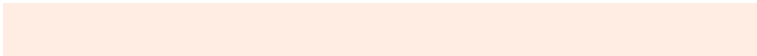


# Sweetspot

The Sweet Spot groups the original color and five complimentary colors.



14067080



16772579



14059705



8418671



0



8421504



# Same Dimension

The Same Dimension uses a secret algorithm to generate beautiful new colors.



14067080



16759183



14077064



7038048



11223040



2822144

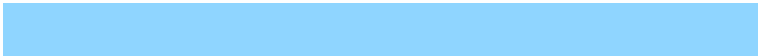


# Inverse Universe

The Inverse Universe completely reimagines the original color for something new.



8960470



9426431



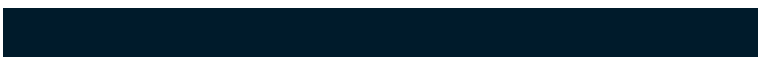
8950486



6317931



27563



6955



# Previews

## White Background



This preview shows how the Decimal color 14067080 looks on a white background.

## Color Contrast Check

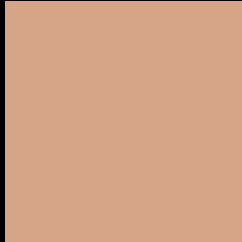
Large Text (above 18pt) WCAG AA × Fail

Any Text WCAG AA × Fail

Large Text (above 18pt) WCAG AAA × Fail

Any Text WCAG AAA × Fail

# Black Background



This preview shows how the Decimal color 14067080 looks on a black background.

## Color Contrast Check

Large Text (above 18pt) WCAG AA ✓ Pass

Any Text WCAG AA ✓ Pass

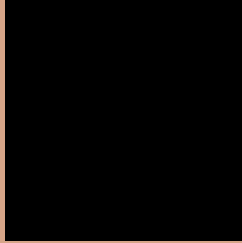
Large Text (above 18pt) WCAG AAA ✓ Pass

Any Text WCAG AAA ✓ Pass

If you want to check with other color combinations, try the [Color Contrast Checker](#).



## Decimal 14067080 Background



This preview shows how black text looks on a background with the Decimal color 14067080.



This preview shows how white text looks on a background with the Decimal color 14067080.

# Color Blindness Simulation

Color vision deficiency is a very complex topic, and I could not describe the different causes any better than Wikipedia does, so if you want to learn more, you should check out their [article about color blindness](#).


## Dichromacy



**Original Color**  
14067080

**Protanopia**  
12234637

**Deuteranopia**  
13543559



**Tritanopia**  
14327980

# Trichromacy



**Original Color**  
14067080

**Protanomaly**  
12888971

**Deuteranomaly**  
13739911

**Tritanomaly**  
14262943

# Monochromacy



**Original Color**  
14067080

**Achromatopsia**  
11579568

**Achromatomaly**  
12496033

# CSS Examples

## Text

The CSS property to change the color of the text to Decimal 14067080 is called "color". The color property can be set on classes, ids or directly on the HTML element.

This example shows how text in the color #D6A588 looks like.

```
.text, #text, p{  
    color:#D6A588  
}
```

If you want to add a text shadow in that color use the text-shadow property, you can generate a text shadow directly with our [CSS Text Shadow Generator](#).

Here you see how black text with a 4 pixel #D6A588 colored shadow looks like.

```
.shadow{ text-shadow: 4px 4px 2px #D6A588
}
```

## Border

The CSS property to change the border of an element to Decimal 14067080 is called "border". The border property can be set on classes, ids or directly on the HTML element.

This example shows the color as border, it can be applied via the CSS property "border" or "border-color".

```
.border, #border, table{ border:4px solid
#D6A588 }
```

If only the border color should be changed use the property `border-color`.

```
.border{ border-color:#D6A588 }
```

If you want to add a box shadow in that color use:

Here you see how a box with a 4 pixel #D6A588 colored shadow looks like.

```
.boxshadow{ -moz-box-shadow:4px 4px 4px  
4px #D6A588; -webkit-box-shadow:4px 4px  
4px 4px #D6A588; box-shadow:4px 4px 4px  
4px #D6A588 }
```

# Background

The CSS property to change the background color of an element to Decimal 14067080 is called "background". The background property can be set on classes, ids or directly on the HTML element.

```
.background, #background, body{  
background:#D6A588 }
```

If only the background color should be changed can be used:

```
.background{ background-color:#D6A588 }
```

This example shows the color as background, it is applied via the CSS property "background".

To optimize and compress your CSS code, you can use our [online CSS compressor and optimizer](#) based on csstidy. If you want to create a linear or radial gradient as background or border, check our [CSS Gradient Generator](#).



Hey! You found this booklet interesting? Support Converting Colors with the new Membership Option!

The pro membership hides all ads, plus gives you double the colors in the color bucket, and more awesome pro features!

**[Learn more, Memberships starting at \\$2.50/m!](#)**

**Follow me  
on Twitter!**

@ConvertingColor