

Converting Colors

Decimal(14067091)

Have a look what the booklet for
Decimal(14067091) contains.

Decimal(14067091)	3
<i>Conversions</i>	4
<i>Details</i>	6
<i>Harmonies</i>	11
<i>Previews</i>	23
<i>Color Blindness Simulation</i>	26
<i>CSS Examples</i>	29

Color

Decimal(14067091)

Conversions

Conversions Part 1

Format	Color
Hex	D6A593
RGB	214, 165, 147
RGB Percent	84%, 65%, 58%
CMY	0.1608, 0.3529, 0.4235
CMYK	0.00, 0.23, 0.31, 0.16
HSL	16°, 45%, 71%
HSV	16°, 31%, 84%
XYZ	46.4531, 43.3130, 33.5157
YIQ	177.5990, 34.9820, 4.7900

Conversions

Conversions Part 2

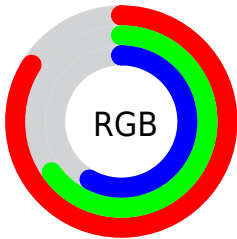
Format	Color
R _Y B	214, 172, 147
Decimal	14067091
CIE Lab	71.77, 15.54, 16.28
CIE LCh	72, 22.510, 46.333
Yxy	43.3130, 0.3768, 0.3513
Android (android.graphics.Color)	4292257171 (0xFFD6A593)
YUV	177.5990, -15.0853, 31.9237
Hunter-Lab	65.8126, 10.8203, 15.8749

Details

The Decimal color **14067091** is a light color, and the websafe version is hex **CC9999**. A complement of this color would be **9684182**, and the grayscale version is **11711154**.

A 20% lighter version of the original color is **16768201**, and **10383712** is the 20% darker color. If you saturate the color by 10%, you get **14062974**, and if you desaturate by 10%, it is **14071208**.

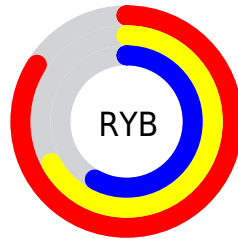
Distribution



Red (84%)

Green (65%)

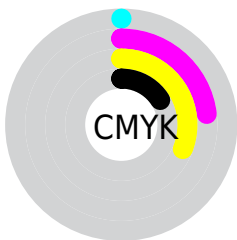
Blue (58%)



Red (84%)

Yellow (67%)

Blue (58%)

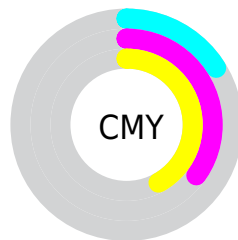


Cyan (0%)

Magenta (23%)

Yellow (31%)

Black (16%)



Cyan (16%)

Magenta (35%)

Yellow (42%)

Brightness & Saturation Gradients

These gradients show how the Decimal color 14067091 changes by changing the brightness by 10 percent. The first figure shows a shift by +10% for each color and the second figure -10%.

Similar to the brightness gradients but the following saturation gradients show a change of the Decimal color 14067091 by changing the saturation by 10% instead.

 14067091

 14067091

16777215

 12225401

 16768201

 10383712

 16775653

 8607817

 6897970

 5188125

 3609860

 2162688

 0

 14067091

 14067091

 14062974

 14071208

 14059112

 14075070

 14054995

 14079187

 14050877

 14083305

 14047016

 14087166

 14042899

 14090239

 14039296

Harmonies

Analogous

The Analogous color harmony consists of three colors that are next to each other on the color wheel.



14328229



14067091



13151112

Triad

The Triadic color harmony groups three colors that are evenly spaced from another and form a triangle on the color wheel.



14067091



8829861



10989271

Complementary

The Complementary color scheme is a pair of colors which are on the opposite of each other on the color wheel.



14067091



9684182

Split Complementary

Split-complementary colors differ from the complementary color scheme. The scheme consists of three colors, the original color and two neighbors of the complement color.



9221591



14067091



7912635

Square

The Square scheme is like the rectangle color scheme, but the four colors are evenly spaced on the color wheel.



14067091



10270867



7977421



12691404

Rectangle

The Rectangle color scheme consists of four colors that form a rectangle on the color wheel.



14067091



12300423



7977421



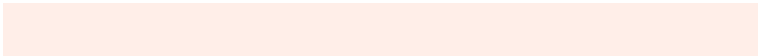
10334424

Sweetspot

The Sweet Spot groups the original color and five complimentary colors.



14067091



16772840



14062532



8418673



0



8421504

Same Dimension

The Same Dimension uses a secret algorithm to generate beautiful new colors.



14067091



16758942



14075539



7037792



11218432



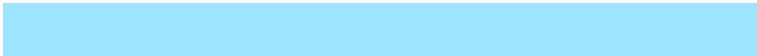
2821120

Inverse Universe

The Inverse Universe completely reimagines the original color for something new.



9684182



10413567



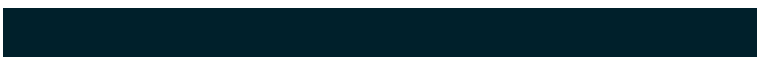
9675734



6318187



32171



8235

Previews

White Background



This preview shows how the Decimal color 14067091 looks on a white background.

Color Contrast Check

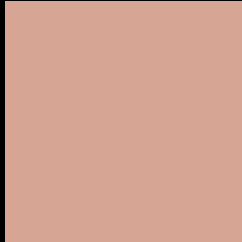
Large Text (above 18pt) WCAG AA × Fail

Any Text WCAG AA × Fail

Large Text (above 18pt) WCAG AAA × Fail

Any Text WCAG AAA × Fail

Black Background



This preview shows how the Decimal color 14067091 looks on a black background.

Color Contrast Check

Large Text (above 18pt) WCAG AA ✓ Pass

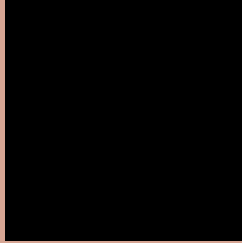
Any Text WCAG AA ✓ Pass

Large Text (above 18pt) WCAG AAA ✓ Pass

Any Text WCAG AAA ✓ Pass

If you want to check with other color combinations, try the [Color Contrast Checker](#).

Decimal 14067091 Background



This preview shows how black text looks on a background with the Decimal color 14067091.



This preview shows how white text looks on a background with the Decimal color 14067091.

Color Blindness Simulation

Color vision deficiency is a very complex topic, and I could not describe the different causes any better than Wikipedia does, so if you want to learn more, you should check out their [article about color blindness](#).

Dichromacy



Original Color
14067091

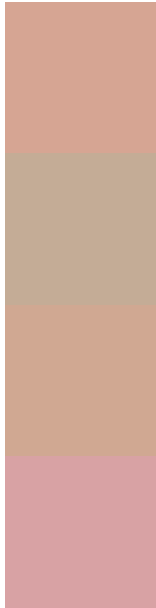
Protanopia
12169368

Deuteranopia
13412754



Tritanopia
14262702

Trichromacy



Original Color
14067091

Protanomaly
12889238

Deuteranomaly
13674642

Tritanomaly
14197412

Monochromacy



Original Color
14067091

Achromatopsia
11711154

Achromatomaly
12561831

CSS Examples

Text

The CSS property to change the color of the text to Decimal 14067091 is called "color". The color property can be set on classes, ids or directly on the HTML element.

This example shows how text in the color #D6A593 looks like.

```
.text, #text, p{  
    color:#D6A593  
}
```

If you want to add a text shadow in that color use the text-shadow property, you can generate a text shadow directly with our [CSS Text Shadow Generator](#).

Here you see how black text with a 4 pixel #D6A593 colored shadow looks like.

```
.shadow{ text-shadow: 4px 4px 2px #D6A593
}
```

Border

The CSS property to change the border of an element to Decimal 14067091 is called "border". The border property can be set on classes, ids or directly on the HTML element.

This example shows the color as border, it can be applied via the CSS property "border" or "border-color".

```
.border, #border, table{ border:4px solid
#D6A593 }
```

If only the border color should be changed use the property border-color.

```
.border{ border-color:#D6A593 }
```

If you want to add a box shadow in that color use:

Here you see how a box with a 4 pixel #D6A593 colored shadow looks like.

```
.boxshadow{ -moz-box-shadow:4px 4px 4px  
4px #D6A593; -webkit-box-shadow:4px 4px  
4px 4px #D6A593; box-shadow:4px 4px 4px  
4px #D6A593 }
```

Background

The CSS property to change the background color of an element to Decimal 14067091 is called "background". The background property can be set on classes, ids or directly on the HTML element.

```
.background, #background, body{  
background:#D6A593 }
```

If only the background color should be changed can be used:

```
.background{ background-color:#D6A593 }
```

This example shows the color as background, it is applied via the CSS property "background".

To optimize and compress your CSS code, you can use our [online CSS compressor and optimizer](#) based on csstidy. If you want to create a linear or radial gradient as background or border, check our [CSS Gradient Generator](#).

Hey! You found this booklet interesting? Support Converting Colors with the new Membership Option!

The pro membership hides all ads, plus gives you double the colors in the color bucket, and more awesome pro features!

[Learn more, Memberships starting at \\$2.50/m!](#)

**Follow me
on Twitter!**

@ConvertingColor